

# Comparing the clinical trial efficacy *versus* real-world effectiveness of treatments for multiple myeloma: a population-based study

## Authors

---

Alissa Visram,<sup>1</sup> Kelvin Kar-Wing Chan,<sup>2</sup> Hsien Seow,<sup>3</sup> Gregory Pond,<sup>3</sup> Anastasia Gayowsky,<sup>4</sup> Ghulam Rehman Mohyuddin,<sup>5</sup> Arleigh McCurdy,<sup>1</sup> Irwindeep Sandhu,<sup>6</sup> Christopher Venner,<sup>7</sup> Guido Lancman,<sup>8</sup> Amaris Balitsky,<sup>3</sup> Tom Kouroukis,<sup>3</sup> Robert Bruins,<sup>9</sup> Shaji Kumar,<sup>10</sup> Rafael Fonseca<sup>11</sup> and Hira Mian<sup>3</sup>

<sup>1</sup>The Ottawa Hospital Research Institute, Ottawa, Ontario, Canada;

<sup>2</sup>Department of Medicine, Sunnybrook Health Sciences Center, University of Toronto, Ontario, Canada; <sup>3</sup>Department of Oncology, McMaster University, Hamilton, Ontario, Canada; <sup>4</sup>ICES McMaster, McMaster University, Hamilton, Ontario, Canada; <sup>5</sup>Department of Hematology, Huntsman Cancer Institute, Salt Lake City, UT, USA;

<sup>6</sup>Department of Oncology, University of Edmonton, Edmonton, Alberta, Canada; <sup>7</sup>Department of Medical Oncology, BC Cancer - Vancouver Center, University of British Columbia, Vancouver, British

Columbia, Canada; <sup>8</sup>Department of Medicine, University of Toronto, Toronto, Ontario, Canada; <sup>9</sup>Eli Lilly Canada Inc., Toronto, Ontario, Canada; <sup>10</sup>Division of Hematology, Mayo Clinic, Rochester, MI, USA and <sup>11</sup>Division of Hematology/Oncology, Mayo Clinic, Phoenix, AZ, USA

Correspondence:

A. VISRAM - alisvisram@toh.ca

<https://doi.org/10.3324/haematol.2024.285768>

Received: May 1, 2024.

Accepted: August 16, 2024.

Early view: August 22, 2024.

©2025 Ferrata Storti Foundation

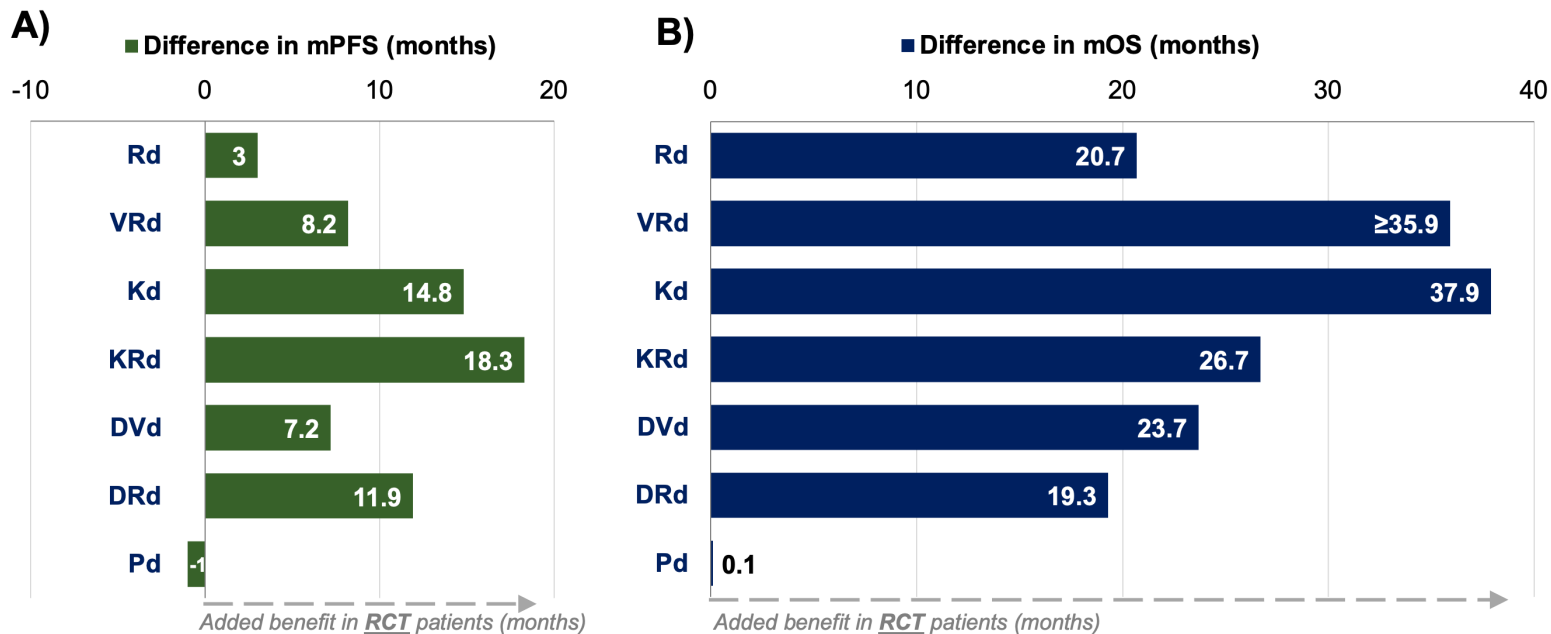
Published under a CC BY-NC license 

## Supplementary Appendix

**Table S1. Comparison of clinical trial inclusion criteria and Cancer Care Ontario (CCO) drug regimen funding.** The CCO criteria that differ from RCT trial inclusion/exclusion criteria are bolded.

Regimen	CCO criteria				RCT inclusion criteria			
	Funding date	Patient population	Prior lines	Prior drug exposure/ refractory requirements	Date of first publication	Prior lines	Inclusion criteria (based on prior treatment)	Exclusion criteria (based on prior treatment)
Pd	February 6, 2015	RRMM	-	Bortezomib and lenalidomide refractory. <b>No requirement for prior alkylator exposure</b>	September 3, 2013 (12)	-	bortezomib refractory or intolerance AND lenalidomide refractory AND alkylator exposure	Prior pomalidomide exposure
Rd	March 14, 2017	TIE-NDMM	None	Same as trial	September 4, 2014 (5)	None	No prior treatment	-
KRd	May 1, 2018	RRMM	<b>≥1</b>	Same as trial	January 8, 2015 (8)	1-3	Prior bortezomib and lenalidomide exposure allowed	Lenalidomide refractory
Kd	May 1, 2018	RRMM	1-3	If prior PI exposure, <b>no requirement to be PI unexposed within 6 months pre-treatment. Otherwise, same as trial.</b>	December 5, 2015 (9)	1-3	Prior bortezomib and carfilzomib exposure allowed (6-month PI treatment free interval before enrollment required)	Bortezomib or carfilzomib refractory
DVd	March 15, 2019	RRMM	≥1	Same as trial	August 25, 2016 (11)	≥1	-	Bortezomib refractory (or intolerant) OR Proteasome inhibitor refractory
DRd	March 15, 2019	RRMM	≥1	Same as trial	October 6, 2016 (10)	≥1	-	Lenalidomide refractory (or intolerant)
VRd	December 16, 2020	TIE-NDMM	None	Same as trial	February 4, 2017 (6)	None	No prior treatment	-

Abbreviations: lenalidomide & dex (Rd); bortezomib & Rd (VRd); carfilzomib & dex (Kd); carfilzomib & Rd (KRd); daratumumab & bortezomib & dex (DVd); daratumumab & Rd (DRd); Pomalidomide & dex (Pd); transplant ineligible newly diagnosed multiple myeloma (TIE-NDMM); relapsed refractory multiple myeloma (RRMM); proteasome inhibitor (PI)



**Figure S1. Difference in absolute the median A) PFS and B) OS between clinical trial (RCT) and real-world (RW) patient cohorts.** A positive number represents an improved PFS or OS, respectively, in the CT cohort compared to the RW cohort. In the SWOG0777 VRd study, the median OS was not reached in the VRD CT cohort at 84 months of follow up, and therefore the absolute improvement in OS noted is at least 35.9 months compared to the RW cohort. Abbreviations: lenalidomide & dex (Rd); bortezomib & Rd (VRd); carfilzomib & dex (Kd); carfilzomib & Rd (KRd); daratumumab & bortezomib & dex (DVd); daratumumab & Rd (DRd); Pomalidomide & dex (Pd)

**Table S2. Summary of mPFS and mOS in the RW cohort, stratified by baseline age**

	Number of patients		mPFS		mOS	
	Age <70	Age ≥70	Age <70	Age ≥70	Age <70	Age ≥70
<b>RD</b>	49	775	25.5 (20-39.5)	22.9 (20.7-26.9)	37.5 (29.7-64.2)	38.4 (34.3-40.4)
<b>VRD</b>	26	256	14.1 (5.2-NR)	32.6 (25.1-44.2)	28.4 (5.5-NR)	52.7 (43.5-NR)
<b>KD</b>	287	211	3.8 (2.8-4.6)	4.3 (2.9-5.7)	9.9 (8.4-13.5)	9.9 (7.3-13)
<b>KRD</b>	169	118	6.3 (4.7-8.6)	9.6 (7.3-11.7)	21.6 (17.2-30.1)	21.9 (13.9-32.3)
<b>DVD</b>	304	323	8.7 (7-9.9)	10.9 (8.7-14.5)	29.8 (22.4-40.3)	23.2 (18.5-30.2)
<b>DRD</b>	310	475	27.8 (21.2-NR)	NR (28.6-NR)	NR (45.2-NR)	43.4 (38.6-NR)
<b>PD</b>	318	330	3.9 (3.3-5.1)	6.1 (5-7.6)	13.6 (11.6-17.3)	10.5 (9.3-14)
	CCI <2	CCI ≥2	CCI <2	CCI ≥2	CCI <2	CCI ≥2
<b>RD</b>	489	335	26 (22.5-31.3)	20 (16.1-23.5)	45.3 (38.7-49.5)	29 (23.5-35)
<b>VRD</b>	166	116	35.8 (25.6-44.2)	24.3 (16.1-NR)	48.1 (43.5-NR)	52.7 (26.8-NR)
<b>KD</b>	73	425	7.6 (5.4-10.2)	3.3 (2.8-4.1)	20.5 (12.3-38.6)	8.6 (7.1-10.5)
<b>KRD</b>	41	246	9.7 (5.7-14)	8 (5.6-9.4)	35 (20.2-59.5)	21.2 (16.7-27.9)
<b>DVD</b>	120	507	12.6 (8.5-17.8)	9 (7.7-10.5)	33.2 (22.8-NR)	24.2 (20-30.2)
<b>DRD</b>	221	564	NR (34.8-NR)	27.5 (22.6-34)	NR (NR-NR)	43.4 (35.8-NR)
<b>PD</b>	127	521	6.4 (5-8.3)	4.6 (3.9-5.6)	16.6 (12.3-21.8)	11.6 (9.9-13.5)

Abbreviations: charlson comorbidity index (**CCI**); median progression free survival (**mPFS**); median overall survival (**mOS**); real world (**RW**); randomized clinical trial (**RCT**); confidence interval (**CI**); lenalidomide & dex (**Rd**); bortezomib & Rd (**VRd**); carfilzomib & dex (**Kd**); carfilzomib & Rd (**KRd**); daratumumab & bortezomib & dex (**DVd**); daratumumab & Rd (**DRd**); Pomalidomide & dex (**Pd**); transplant ineligible newly diagnosed multiple myeloma (**TIE-NDMM**); relapsed refractory multiple myeloma (**RRMM**); proteasome inhibitor (**PI**)