

Repurposing CD19-directed immunotherapies for pediatric t(8;21) acute myeloid leukemia

Authors

Farnaz Barneh,^{1*} Joost B. Koedijk,^{1,2*} Noa E. Wijnen,^{1,3*} Tom Meulendijks,¹ Mino Ashtiani,¹ Ester Dunnebach,^{1,4} Noël Dautzenberg,¹ Annelisa M. Cornel,^{1,4} Anja Krippner-Heidenreich,¹ Kim Klein,^{1,5} C. Michel Zwaan,^{1,2} Jürgen Kuball,⁴ Stefan Nierkens,^{1,4} Jacqueline Cloos,⁶ Gertjan J.L. Kaspers^{1,3#} and Olaf Heidenreich^{1,7,8#}

¹Princess Máxima Center for Pediatric Oncology, Utrecht, the Netherlands; ²Erasmus MC-Sophia Children's Hospital, Department of Pediatric Oncology, Rotterdam, the Netherlands; ³Emma Children's Hospital, Amsterdam UMC, Vrije Universiteit, Department of Pediatric Oncology, Amsterdam, the Netherlands; ⁴Center for Translational Immunology, University Medical Center Utrecht, Utrecht University, Utrecht, the Netherlands; ⁵Wilhelmina Children's Hospital/University Medical Center, Utrecht, the Netherlands; ⁶Department of Hematology, Amsterdam UMC, Location VUMC, Cancer Center Amsterdam, the Netherlands; ⁷Wolfson Childhood Cancer Research Center, Translational and Clinical Research Institute, Newcastle University, Newcastle upon Tyne, UK and ⁸University Medical Center Utrecht, Utrecht University, Utrecht, the Netherlands

*FB, JBK and NEW contributed equally as first authors.

#GJLK and OH contributed equally as senior authors.

Correspondence:

G.J.L. KASPERS - g.j.l.kaspers@prinsesmaximacentrum.nl

O. HEIDENREICH - O.T.Heidenreich@prinsesmaximacentrum.nl

<https://doi.org/10.3324/haematol.2024.285707>

Received: April 18, 2024.

Accepted: July 30, 2024.

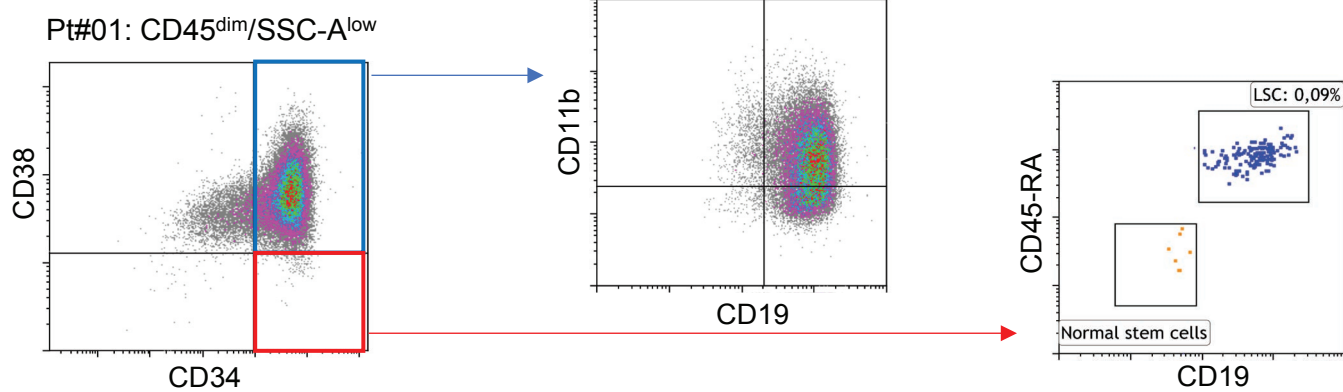
Early view: August 8, 2024.

©2024 Ferrata Storti Foundation

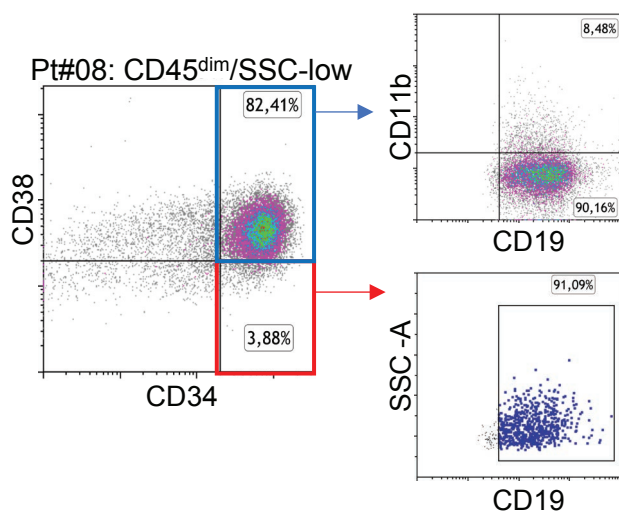
Published under a CC BY-NC license 

Supplementary Figure 1

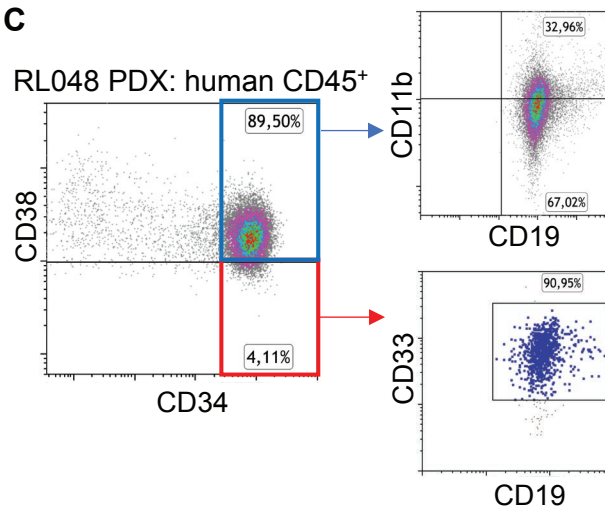
A



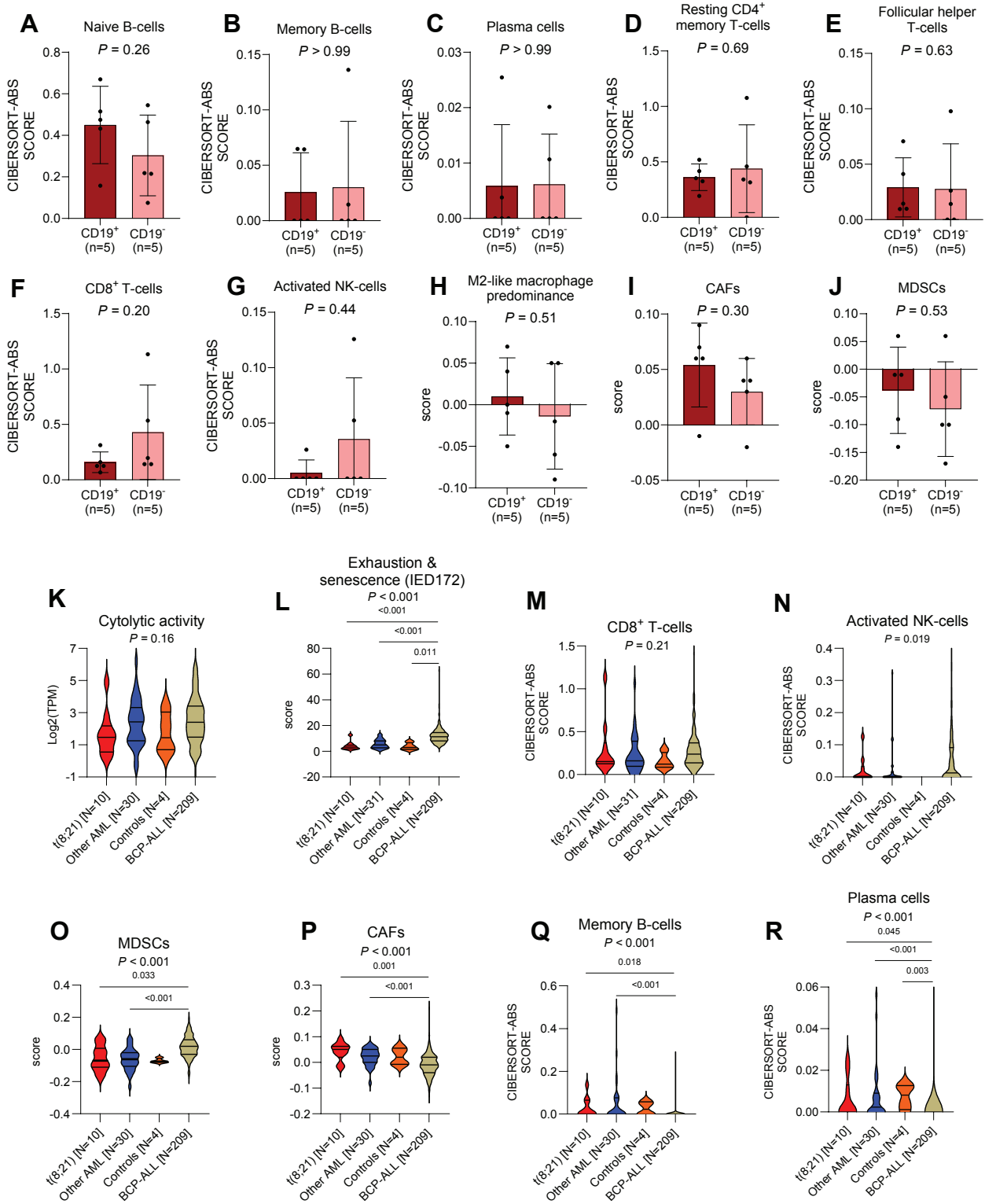
B



C



Supplementary Figure 2



Supplementary Figure legends

Supplementary Figure 1. CD19-expression on AML subpopulations. (A) CD19-expression among putative leukemic stem cells (LSCs; CD34⁺CD38⁻CD45RA⁺) and more mature subpopulations (CD34⁺CD38⁺CD11b⁺, CD34⁺CD38⁺CD11b⁻) from patient #01. (B) CD19-expression among CD34⁺CD38⁻ and more mature subpopulations (CD34⁺CD38⁺CD11b⁺, CD34⁺CD38⁺CD11b⁻) from patient #08. (C) CD19-expression among CD34⁺CD38⁻ and more mature subpopulations (CD34⁺CD38⁺CD11b⁺, CD34⁺CD38⁺CD11b⁻) from RL048 PDX cells.

Supplementary Figure 2. Characterization of the bone marrow immune microenvironment of t(8;21) AML using immunogenomic analyses. (A-J) Comparison of the deconvoluted absolute (ABS) abundance of various cell populations among CD19⁺ and CD19⁻ t(8;21) AML. Data are presented as mean with standard deviation. The Mann-Whitney test was used to test for statistical differences between groups. (K-R) Comparison of gene signature scores (cytolytic activity¹: *GZMA*, *GZMB*, *PRF1*, *GNLY*, *GZMH* (K) and IED172: 172-gene immune effector dysfunction signature² (L)) and the absolute abundance of various cell populations among t(8;21) AML patients, AML patients with other cytogenetic alterations, non-leukemic controls, and BCP-ALL patients (all treatment-naïve). Data are presented as median with quartiles and range. Kruskal-Wallis test with Dunn's post-hoc test is performed for multiple comparisons. In case multiple *P* values are shown, the upper one indicates the result of the Kruskal-Wallis test and the lower one(s) the result of Dunn's test. M2-like macrophage predominance: ratio of M2- to M1-like macrophages; NK: natural killer; MDSC: myeloid-derived suppressor cell; CAF: cancer-associated fibroblast.

References

1. Dufva O, Pölönen P, Brück O, et al. Immunogenomic landscape of hematological malignancies. *Cancer Cell* 2020;38:380-399. e13.
2. Rutella S, Vadakekolathu J, Mazziotta F, et al. Immune dysfunction signatures predict outcomes and define checkpoint blockade-unresponsive microenvironments in acute myeloid leukemia. *The Journal of Clinical Investigation* 2022;132.

(Reference 14 and 15, respectively, in the main file)