

# Rituximab and lenalidomide for the treatment of relapsed or refractory indolent non-Hodgkin lymphoma: real-life experience

Giulio Cassanello,<sup>1,2</sup> Esther Drill,<sup>3</sup> Alfredo Rivas-Delgado,<sup>1</sup> Michelle Okwali,<sup>1</sup> Irem Isgor,<sup>4</sup> Philip C. Caron,<sup>1,5</sup> Zachary Epstein-Peterson,<sup>1,5</sup> Paola Ghione,<sup>1,5</sup> Paul A. Hamlin,<sup>1,5</sup> Jennifer K. Lue,<sup>1,5</sup> Steven M. Horwitz,<sup>1,5</sup> Andrew M. Intlekofer,<sup>1,5</sup> William Johnson,<sup>1,5</sup> Anita Kumar,<sup>1,5</sup> Alison J. Moskowitz,<sup>1,5</sup> Ariela Noy,<sup>1,5</sup> Colette N. Owens,<sup>1,2</sup> M. Lia Palomba,<sup>1,5</sup> Pallawi Torka,<sup>1,5</sup> Pallavi Galera,<sup>4,5</sup> Andrew D. Zelenetz,<sup>1,5</sup> Gilles A. Salles<sup>1,5</sup> and Lorenzo Falchi<sup>1,5</sup>

<sup>1</sup>Department of Medicine, Lymphoma Service, Memorial Sloan Kettering Cancer Center, New York, NY, USA; <sup>2</sup>Department of Oncology and Hemato-Oncology, University of Milan, Milan, Italy; <sup>3</sup>Department of Epidemiology and Biostatistics, Memorial Sloan Kettering Cancer Center, New York, NY, USA; <sup>4</sup>Department of Pathology, Memorial Sloan Kettering Cancer Center, New York, NY, USA and <sup>5</sup>Department of Medicine, Weil Cornell Medical College, New York, NY, USA

**Correspondence:** L. Falchi  
[falchil@mskcc.org](mailto:falchil@mskcc.org)

**Received:** April 15, 2024.

**Accepted:** August 27, 2024.

**Early view:** September 5, 2024.

<https://doi.org/10.3324/haematol.2024.285600>

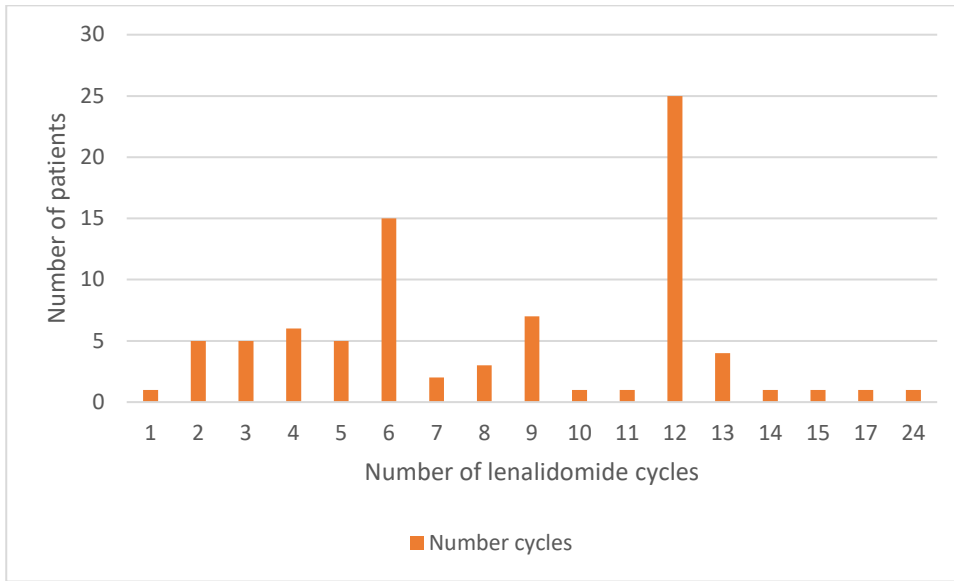
©2025 Ferrata Storti Foundation

Published under a CC BY-NC license



Supplemental Figure 1

Number of lenalidomide cycles received



**Supplemental table 1 Patient characteristics stratified by follicular lymphoma (FL)/marginal zone lymphoma (MZL)**

Characteristic	FL			MZL		
	CR N = 38 <sup>1</sup>	PR/SD/PD N = 31 <sup>1</sup>	p- value <sup>2</sup>	CR N = 6 <sup>1</sup>	PR/SD/PD N = 9 <sup>1</sup>	p- value <sup>2</sup>
<b>Age</b>			0.6			0.3
Age ≤ 60	12 (32%)	12 (39%)		3 (50%)	2 (22%)	
Age > 60	26 (68%)	19 (61%)		3 (50%)	7 (78%)	
<b>Number of previous lines</b>	1 (1, 3)	2 (1, 3)	0.5	3 (2, 5)	3 (3, 4)	0.8
<b>Elevated LDH</b>	5 (13%)	8 (26%)	0.2	2 (33%)	2 (22%)	>0.9
<b>FLIPI</b>			0.6			>0.9
0-2	21 (55%)	19 (61%)		2 (33%)	4 (44%)	
3-5	17 (45%)	12 (39%)		4 (67%)	5 (56%)	
<b>Bulky disease</b>	7 (18%)	8 (26%)	0.6	0 (0%)	4 (44%)	0.10
<b>Extranodal involvement</b>	25 (66%)	15 (48%)	0.2	5 (83%)	7 (78%)	>0.9
<b>Rituximab refractory</b>	8 (21%)	9 (29%)	0.6	0 (0%)	3 (33%)	0.2
<b>Refractory to last tx<sup>3</sup></b>	13 (35%)	11 (39%)	0.8	0 (0%)	5 (63%)	<b>0.03</b>
<b>Ineligible for clinical trial</b>	10 (26%)	12 (39%)	0.3	1 (17%)	4 (44%)	0.6
<b>Reduced lenalidomide dose upfront</b>	6 (16%)	7 (23%)	0.5	1 (17%)	0 (0%)	0.4
<b>Stage pre-treatment</b>			>0.9			
1/2	6 (16%)	5 (16%)				
3/4	32 (84%)	26 (84%)				
<b>MZL subtype</b>						>0.9
EMZL				1 (17%)	1 (11%)	
NMZL				3 (50%)	6 (67%)	
SMZL				2 (33%)	2 (22%)	

Abbreviations: CR, indicates complete remission; PR, partial remission; SD, stable disease; PD, progressive disease; FL, follicular lymphoma; MZL, marginal zone lymphoma; FLIPI, follicular lymphoma international prognostic index

<sup>1</sup> Values reported as n (%) or median (IQ range)

<sup>2</sup> Statistical analysis performed using Fisher's exact test and Wilcoxon rank sum test

<sup>3</sup> Data available on 79 patients

**Supplemental table 2 Duration of Response (DOR) in Responders by Best Response**

	<b>N</b>	<b>DOR Events</b>	<b>Median DOR<sup>1</sup></b>	<b>2-year DOR</b>	<b>p-value<sup>2</sup></b>
<b>Best Response</b>	69	29			<0.001*
CR	44	10	46 (22–NR)	63% (44–91)	
PR	25	19	10 (10–23)	21% (9–49)	

Abbreviations: NR, not reached; CR, complete remission; PR, partial remission

<sup>1</sup> Values are reported as months (95% CI)

<sup>2</sup> Statistical analysis performed using Log-rank test.

\* p-value significant if <0.05

**Supplemental table 3 Duration of Response (DOR) in CR Patients by Timing of CR**

	<b>N</b>	<b>DOR Events</b>	<b>Median DOR<sup>1</sup></b>	<b>2-year DOR</b>	<b>p-value<sup>2</sup></b>
<b>EOT Response</b>	31	8			0.5
CR after cycle 6	10	4	17 (12–NR)	22% (4–100)	
CR after FTC <sup>3</sup>	21	4	36 (18–NR)	59% (30–100)	

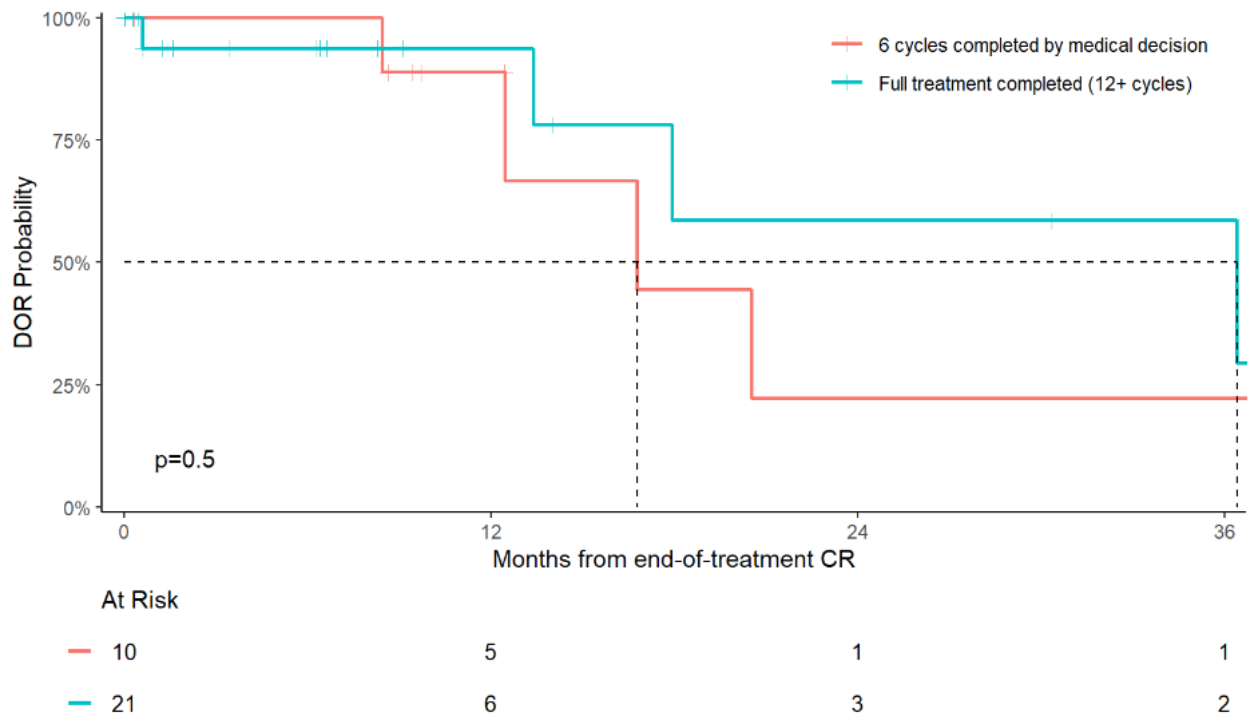
Abbreviations: FTC, full treatment course; NR, not reached; CR, complete remission; EOT, end of treatment

<sup>1</sup> Values are reported as months (95% CI)

<sup>2</sup> Statistical analysis performed using Log-rank test

<sup>3</sup> Patients received 12+ cycles of lenalidomide

Supplemental Figure 2. Duration of end of treatment (EOT) CR by number of treatment cycles



**Supplemental table 4 Progression-free survival by POD24**

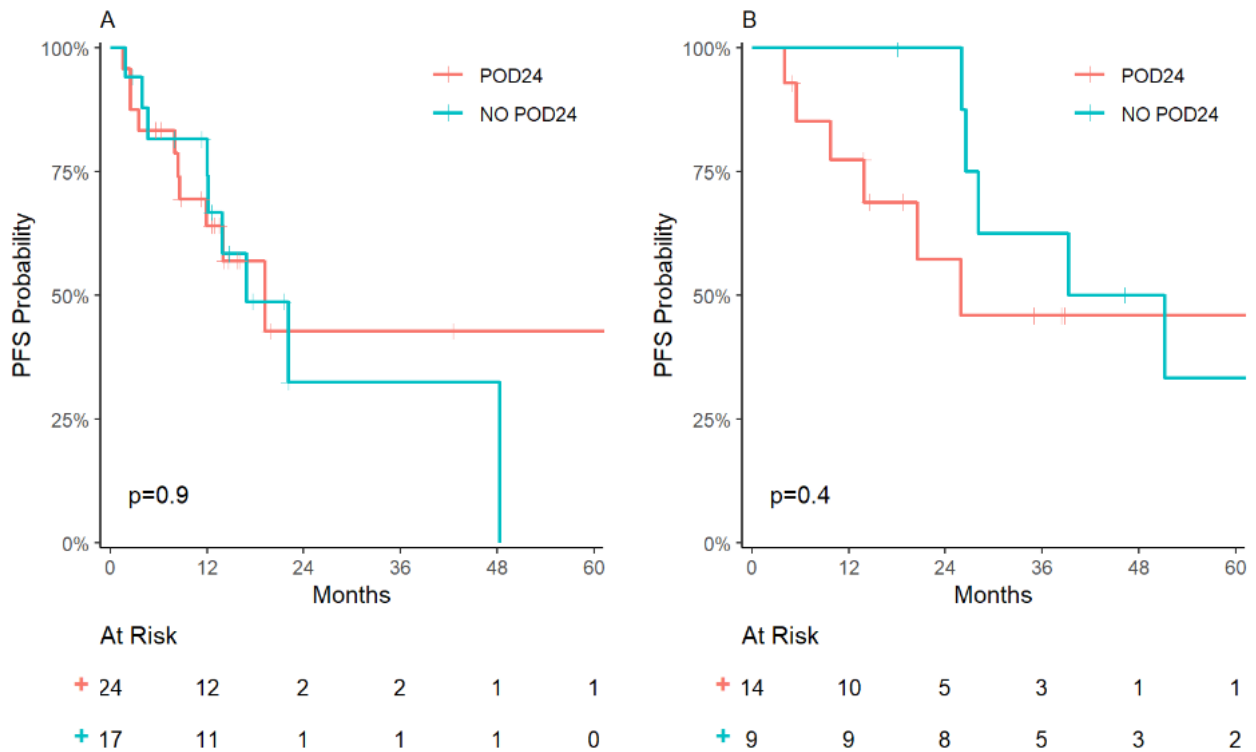
	<b>N</b>	<b>Events</b>	<b>Median PFS<sup>1</sup></b>	<b>2-year PFS</b>	<b>p-value<sup>2</sup></b>
<b>All patients receiving CIT as 1<sup>st</sup> line treatment</b>					0.7
NO POD24	20	11	17 (12–NR)	34% (16–75)	
POD24	25	11	19 (12–NR)	47% (27–83)	
<b>FL patients receiving CIT as 1<sup>st</sup> line treatment</b>					0.9
NO POD24	17	9	17 (12–NR)	32% (12–87)	
POD24	24	10	19 (12–NR)	43% (21–85)	
<b>FL patients receiving CIT as 1<sup>st</sup> line and R-len as 2<sup>nd</sup> line treatment</b>					0.4
NO POD24	9	5	45 (28–NR)	100% (100–100)	
POD24	14	6	26 (14–NR)	57% (34–96)	

Abbreviations: CIT, chemo-immunotherapy; POD24, progression of disease within 24 months of first-line therapy; FL, follicular lymphoma; R-len, rituximab-lenalidomide; NR, not reached; PFS, progression free survival

<sup>1</sup> Values are reported as months (95% CI)

<sup>2</sup> Statistical analysis performed using Log-rank test

Supplemental Figure 3. Progression-free survival by POD24 status in follicular lymphoma patients



**A:** Progression-free survival by POD24 status in FL patients who underwent immunochemotherapy as their initial active treatment. Time is measured from the commencement of the rituximab-lenalidomide regimen. **B:** Progression-free survival by POD24 status in FL patients who underwent immunochemotherapy as their initial active treatment and received rituximab-lenalidomide as second active treatment. Time is measured from POD or 24 months from first active treatment.