

CCL22 mutations in large granular lymphocytic leukemia

Authors

Yuga Mizuno,^{1*} Toru Kawakami,^{2*} Daigo Higano,¹ Shotaro Miyairi,¹ Ami Asakura,¹ Fumihiro Kawakami,² Keijiro Sato,³ Shuji Matsuzawa,² Sayaka Nishina,² Hitoshi Sakai,² Yumiko Higuchi,^{1,4} Kazuyuki Matsuda,^{1,5} Hideyuki Nakazawa² and Fumihiro Ishida^{1,2,4}

¹Department of Clinical Laboratory Investigation, Graduate School of Medicine, Shinshu University, Matsumoto; ²Department of Hematology, Shinshu University School of Medicine, Matsumoto;

³Department of Hematology, Nagano Red Cross Hospital, Nagano;

⁴Department of Biomedical Laboratory Sciences, Shinshu University School of Medicine, Matsumoto and ⁵Department of Health and Medical Sciences, Graduate School of Medicine, Shinshu University, Matsumoto, Japan

**YM and TK contributed equally as first authors.*

Correspondence:

F. ISHIDA - fumishi@shinshu-u.ac.jp

<https://doi.org/10.3324/haematol.2024.285404>

Supplemental Materials

Supplement to: Mizuno Y, et al. *CCL22* mutations in large granular lymphocytic leukemia

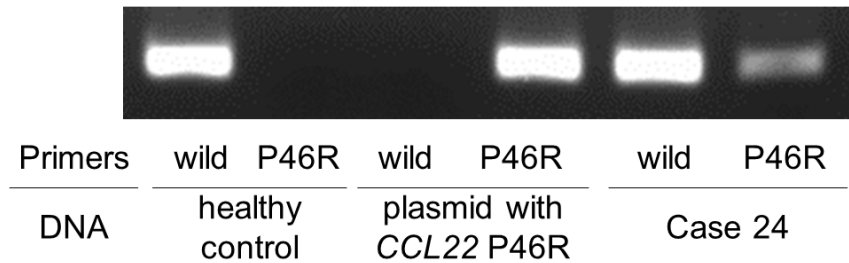
Contents:

Supplemental Figure S1 page 2

Supplemental Figure S2 page 3

Supplemental Table S1 page 4

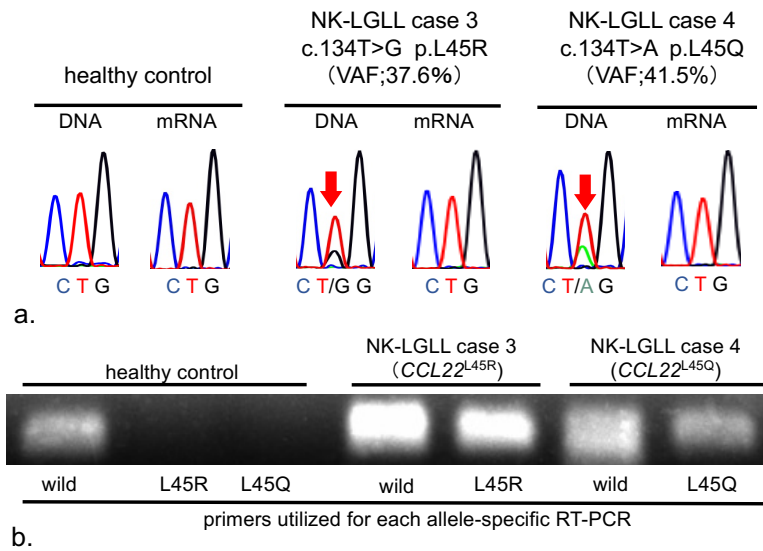
Supplemental Figure S1.



Allele-specific polymerase chain reaction (PCR) for *CCL22* P46R mutation.

Case 24 was a patient with CD8⁺ TCR $\alpha\beta$ type T cell large granular lymphocytic (T-LGL) leukemia. Allele-specific PCR was performed using primers for wild-type *CCL22* or *CCL22* P46R mutation, which validated a *CCL22* P46R mutation identified with the target sequencing. *CCL22* P46R mutation was also confirmed in case 25 with the same method. Primer sequences would be provided upon proper requests to the corresponding author.

Supplemental Figure S2.



The *CCL22* mRNA expression in peripheral blood cells from patients with NK cell large granular lymphocytic leukemia.

a: Sanger sequencing analyses of a *CCL22* mutational site in NK-LGLL patients with *CCL22* mutations. Red arrow indicates a heterozygous C. 134T>G p.L45R or C. 134T>A. L45Q mutation in case 3 or 4, respectively, that was identified in amplified DNA from genome DNA derived from peripheral blood mononuclear cells (PBMC), while no mutational peak was recognized in cDNA reverse-transcribed from mRNA of PBMC.

b: Allele-specific RT-PCR analyses of *CCL22* mutational sites in NK-LGLL patients with *CCL22* L45 mutation.

Supplemental Table S1: NK-LGL leukemia patients with *CCL22* mutations.

case No.	Age (y.o.)	Sex	Neu (x10 ⁹ /L)	Lym (x10 ⁹ /L)	Hb (g/dL)	PLT (x10 ⁹ /L)	<i>CCL22</i> mutations (VAF%)	complication	therapy	observation periods (years)	outcome
3	57	F	3.2	8.6	12.6	280	L45R(37.6)	neuropathy	Watch	3	alive
4	73	F	3.0	6.2	12.0	274	L45Q(41.5)	none	Watch	9	alive
5	82	M	3.9	7.3	15.9	286	L45R(31.8)	oculomotor palsy	Watch	2	alive
6	80	M	3.4	8.6	15.6	121	L45Q (9.9)	NAFLD	Watch	0.2	alive
7	56	M	2.5	6.4	14.3	231	L45Q(34.5)	none	Watch	1	alive
8	28	F	0.6	1.1	11.7	286	L45R(29.7)	SCPTCL	PSL	4	alive

NAFLD, non alcoholic fatty liver disease ; SCPTCL, subcutaneous panniculitis-like T

cell lymphoma; PSL, prednisolone