

The insertion/deletion polymorphism rs201494641 at *ITGA9* influences blood CD34⁺ cell levels by altering ZNF384 binding

Authors

Caterina Cafaro,^{1,2} Zain Ali,^{1,2} Antton Lamarca,^{1,2} Daniela Torres Di Bello,^{1,2} Laura Duran Lozano,^{1,2} Ludvig Ekdahl,^{1,2} Malte Thodberg,^{1,2} Maroulio Pertesi,^{1,2} Aitzkoa Lopez de Lapuente Portilla^{1,2} and Björn Nilsson^{1,2,3}

¹Division of Hematology and Transfusion Medicine, Department of Laboratory Medicine, BMC B13, Lund University, Lund, Sweden;

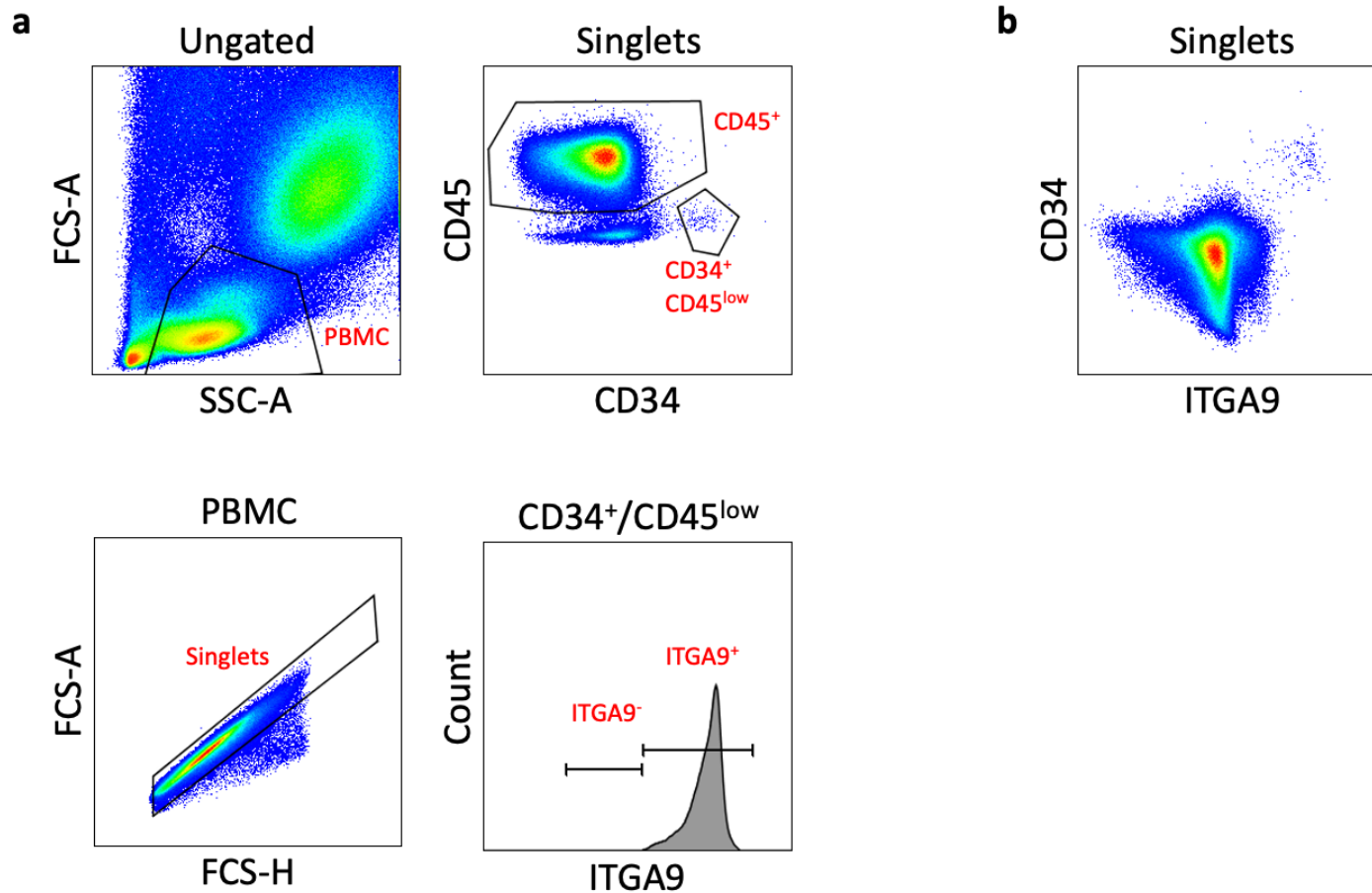
²Lund Stem Cell Center, Lund University, Lund, Sweden and ³Broad Institute, Cambridge, MA, USA

Correspondence:

B. NILSSON - bjorn.nilsson@med.lu.se

<https://doi.org/10.3324/haematol.2024.285363>

Supplementary Figure 1



(a) Gating procedure. **Top left:** peripheral blood mononuclear cells (PBMCs) were gated based on forward scatter area (FSC-A) and side scatter area (SSC-A) from 1 million cells. **Bottom left:** from PBMCs, singlets cells were gated based on forward scatter area (FSC-A) and forward scatter height (FSC-H). **Top right:** from singlets, CD34⁺CD45^{low} cells and CD45⁺ cells were gated from the PBMCs cluster. **Bottom right:** ITGA9⁺ cells were gated from the CD34⁺CD45^{low} cluster. **(b)** Co-expression of ITGA9 and CD34 in PBMCs (*i.e.*, cells that express ITGA9 also express CD34 and vice versa).

Supplementary Table 1

sgRNA and primer sequences used in CRISPR/Cas9 experiments.

sgRNA(s) (+ strand)		PAM		Strand		Primers for deletion confirmation	Deletion size (bp)
5'	3'	5'	3'	5'	3'	Forward/reverse	
sgRNA pair for deleting <i>ITGA9</i> whole region (chr3:37,477,598; "V1-V4")							
CACCGATGAGAGAGTGAGAAGGGA	CACCGGTGTGAAAATGTTATTCTG	AGG	AGG	-	-	CATGGACACTGTTGCACCTC GACTCCCCTAAGAAGCTCCC	486
chr3:37,477,595-37,477,614	chr3:37,478,075-37,478,097						
sgRNA pair for deleting random control region							
CACCGAAATTCCCGAAAAGCCTGGT	CACCGAAAGCACAGGCAGAAACTGT	AGG	AGG	+	+	CCTGTTGCTGTGGCTACTGA GCCAGGCTTGTGGGAAGTA	60
chr17:17,024,714-17,024,736	chr17:17024773-17024795						

Supplementary Table 2

Reporter construct sequences used in luciferase experiments.

Variant	Sequence
rs73053290	ATAGGTACCTTCCCCAGAAACAAATGATACTGGATGTAAAGATAGCATCAGGATTAGAGGCAAGCCCCCTTCC[C/T]TTCTCACTCTCTCATCCTGAGCTTCCTGTG TGCAGACGACATTTTAAGAAATGAGCGGGGAGGAGATCTATA
rs17227369	ATAGGTACCAAGAAATGAGCGGGGAGGGGAATCACTTCTTGAAATAACCACTGAACAACTCTGTATAGGCA[C/T]TGACTGCTGCTCAGACTTTGGAGGACAAC TCAAATGTTCAAGTCTAATGTCGCCCCCTTTCAAGATCTATA
rs201494641	ATAGGTACCTCTTTGTCATTTCCCTTTCTAATTATCAGGGCTGTCCATTATCTGTTCAAGTCTCCCATCTGTCCA[TTTTTTTTTT/TTTTTTTT]CAAAGCCACAGGG TACATTTTGCATTTACTTCTGTTGCTCTGTTCCCTGATTTTTTTTAAAGTGAGATCTATA
rs17227404	ATAGGTACCACACACATGCAGAAAAAGGTATAAATCATCAATGTATACCTCAATAAATTTTCATTAGGTGAA[C/T]GTCCTCAGAATAACATTTTCACACCCCAGCA GCCCCTTCCAATGCCCTCCTGGCCACTTCCAGATCTATA

Major/minor allele in red within brackets