

# Long-term outcomes of newly diagnosed POEMS syndrome patients who received first-line lenalidomide-based therapy

## Authors

---

Xue-min Gao, An-an Li, Hao Zhao, Kai-ni Shen and Jian Li

Department of Hematology, Peking Union Medical College Hospital,  
Chinese Academy of Medical Sciences and Peking Union Medical  
College, Beijing, China

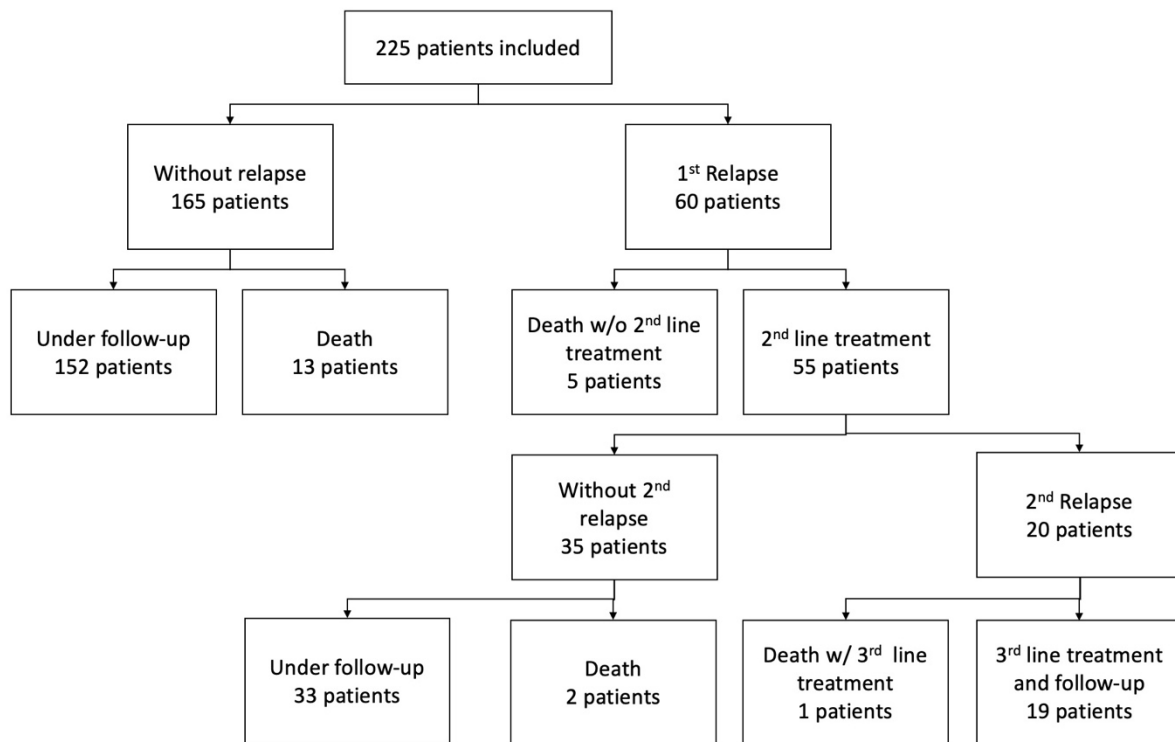
Correspondence:

J. LI - [lijian@pumch.cn](mailto:lijian@pumch.cn)

<https://doi.org/10.3324/haematol.2024.285282>

## Supplementary material

**Supplementary Figure 1 Flow diagram of survival, relapse, and follow-up status of 225 patients included in this study.**



Abbreviation: w/o, without; w/, with.

**Supplementary Table 1 The hematological and VEGF response after first-line treatment**

	All patients (N=225)	Rd (N=141)	Rd+R-MT (N=84)	P-value
CR <sub>H1</sub> at the end of Rd treatment (n, %)	70 (34.5%) (N=203 evaluable)	42 (34.4%) (N=122 evaluable)	28 (34.6%) (N=81 evaluable)	0.983
CR <sub>H1</sub> at the end of Rd+R-MT treatment (n, %)	92 (45.3%) (N=203 evaluable)	57 (46.7%) (N=122 evaluable)	35 (43.2%) (N=81 evaluable)	0.623
Median time to CR <sub>H1</sub> (months, 95%CI)	15.0 (12.5-17.5)	13.0 (11.0-14.9)	18.0 (12.8-23.1)	0.214
CR <sub>V1</sub> at the end of Rd treatment (n, %)	101 (55.2%) (N=183 evaluable)	56 (49.1%) (N=114 evaluable)	45 (65.2%) (N=69 evaluable)	0.034
CR <sub>V1</sub> at the end of Rd+R-MT treatment (n, %)	118 (64.5%) (N=183 evaluable)	68 (59.6%) (N=114 evaluable)	50 (72.5%) (N=69 evaluable)	0.079
Median time to CR <sub>H1</sub> (months, 95%CI)	9.0 (6.63-11.4)	9.0 (5.31-12.7)	8.0 (4.47-11.5)	0.747
Sustained CR <sub>H1</sub> (n, %)	67 (43.8%) (N=153 evaluable and followed-up for at least 24 months)	41 (42.7%) (N=96)	26 (45.6%) (N=57)	0.726
Sustained CR <sub>V1</sub> (n, %)	83 (59.3%) (N=140 evaluable and followed-up for at least 24 months)	49 (53.8%) (N=91)	34 (69.4%) (N=49)	0.074

**Supplementary Table 2 Univariate and multivariate analysis of baseline characteristics in prediction of PFS<sub>1</sub> and OS<sub>1</sub>**

Covariate	Univariate analysis for PFS <sub>1</sub>		Multivariate analysis for PFS <sub>1</sub>		Univariate analysis for OS <sub>1</sub>		Multivariate analysis for OS <sub>1</sub>	
	HR (95%CI)	p-value	HR (95%CI)	p-value	HR (95%CI)	p-value	HR (95%CI)	p-value
Age >50y	0.945 (0.596-1.496)	0.808	0.859 (0.517-1.429)	0.559	0.940 (0.399-2.214)	0.887	0.849 (0.337-2.139)	0.728
ONLS score >4	<b>2.025</b> <b>(1.274-3.220)</b>	<b>0.003</b>	<b>2.019</b> <b>(1.230-3.314)</b>	<b>0.005</b>	<b>3.572</b> <b>(1.500-8.506)</b>	<b>0.004</b>	<b>2.738</b> <b>(1.109-6.763)</b>	<b>0.029</b>
M protein > 5g/L	1.501 (0.741-3.042)	0.260			2.272 (0.754-6.849)	0.145		
VEGF >2000pg/ml	1.019 (0.502-2.068)	0.959			0.796 (0.265-2.390)	0.684		
eGFR <30ml/min/1.73m <sup>2</sup>	1.130 (0.410-3.118)	0.813	0.673 (0.219-2.072)	0.490	1.848 (0.428-7.972)	0.411	0.850 (0.171-4.233)	0.843
Alb <30g/L	0.958 (0.456-2.015)	0.911	0.803 (0.346-1.867)	0.611	1.563 (0.456-5.363)	0.478	1.026 (0.275-3.834)	0.969
Edema	1.254 (0.570-2.762)	0.574			1.026 (0.300-3.507)	0.967		
Ascites	1.166 (0.721-1.887)	0.531			1.761 (0.742-4.180)	0.199		
Pleural effusion	1.497 (0.932-2.404)	0.095	1.638 (0.933-2.875)	0.086	<b>3.404</b> <b>(1.247-9.293)</b>	<b>0.017</b>	<b>3.130</b> <b>(1.126-8.699)</b>	<b>0.029</b>
Pericardial effusions	1.117 (0.655-1.906)	0.684			0.958 (0.368-2.494)	0.930		
sPAP >50mmHg	0.768 (0.366-1.613)	0.485			1.043 (0.302-3.603)	0.947		
Hepatomegaly	1.116 (0.686-1.818)	0.658			0.638 (0.234-1.743)	0.381		
Splenomegaly	0.762 (0.478-1.216)	0.254			0.728 (0.309-1.714)	0.467		
Lymphadenopathy	1.456 (0.873-2.430)	0.150			1.243 (0.501-3.081)	0.639		
Angioma	1.079 (0.658-1.769)	0.764	1.099 (0.614-1.966)	0.750	0.984 (0.392-2.467)	0.972	0.962 (0.345-2.684)	0.942
Hyperpigmentation	1.508 (0.607-3.746)	0.376			2.347 (0.315-17.503)	0.405		
Stroke	0.914 (0.367-2.277)	0.847			2.835 (0.943-8.521)	0.064		

Polycythemia	0.721 (0.345-1.509)	0.385			0.343 (0.046-2.563)	0.297		
Thrombocytosis	0.718 (0.356-1.447)	0.354			0.265 (0.035-1.976)	0.195		
Rd+R-MT treatment	<b>0.526</b> <b>(0.287-0.965)</b>	<b>0.038</b>	<b>0.423</b> <b>(0.212-0.878)</b>	<b>0.020</b>	<b>0.202</b> <b>(0.047-0.871)</b>	<b>0.032</b>	<b>0.119</b> <b>(0.016-0.894)</b>	<b>0.039</b>

Abbreviations: eGFR, estimated glomerular filtration rate; ONLS, Overall Neuropathy Limitations Scale; VEGF, vascular endothelial growth factor; sPAP, systolic pulmonary artery pressure; Rd+R-MT, lenalidomide plus dexamethasone, and lenalidomide maintenance treatment.