

Safety and efficacy of flumatinib as later-line therapy in patients with chronic myeloid leukemia

Yunfan Yang,^{1*} Yuntao Liu,^{2*} Hui Sun,^{3*} Li Meng,⁴ Hai Lin,⁵ Chunyan Chen,⁶ Jianda Hu,⁷ Xuliang Shen,⁸ Minghui Duan,⁹ Yanli Zhang,¹⁰ Dilinazi Abulaiti,¹¹ Jinghua Wang,¹² Hongqian Zhu,¹³ Luoming Hua,¹⁴ Qing Leng,¹⁵ Chun Zhang,¹⁶ Lili Sun,¹⁷ Weiming Li,¹⁸ Huanling Zhu,¹⁹ Bingcheng Liu² and Jianxiang Wang²

¹Department of Hematology, Institute of Hematology, West China Hospital of Sichuan University, Chengdu, Sichuan; ²State Key Laboratory of Experimental Hematology, National Clinical Research Center for Blood Diseases, Haihe Laboratory of Cell Ecosystem, Institute of Hematology & Blood Diseases Hospital, Chinese Academy of Medical Sciences & Peking Union Medical College, Tianjin; ³The First Affiliated Hospital of Zhengzhou University, Zhengzhou, Henan; ⁴Tongji Hospital Tongji Medical College of Huazhong University of Science & Technology, Wuhan, Hubei; ⁵Department of Hematology, First Hospital of Jilin University, Changchun, Jilin; ⁶Qilu Hospital of Shandong University, Jinan, Shandong; ⁷Wilis F. Pierce Memorial Hospital, Fuzhou, Fujian; ⁸Heping Hospital Affiliated to Changzhi Medical College, Changzhi, Shanxi; ⁹Department of Hematology, Peking Union Medical College Hospital, Chinese Academy of Medical Sciences & Peking Union Medical College, Beijing; ¹⁰Henan Cancer Hospital, Zhengzhou, Henan; ¹¹Hematologic Disease Center, The First Affiliated Hospital of Xinjiang Medical University, Xinjiang Hematologic Disease Institute, Urumqi, Xinjiang; ¹²The Second Affiliated Hospital of Harbin Medical University, Harbin, Heilongjiang; ¹³Department of Hematology, Guizhou Provincial People's Hospital, Guiyang, Guizhou; ¹⁴Affiliated Hospital of Hebei University, Baoding, Hebei; ¹⁵Anshan Central Hospital, Anshan, Liaoning; ¹⁶The First Affiliated Hospital of Jiamusi University, Jiamusi, Heilongjiang; ¹⁷The First Affiliated Hospital of Harbin Medical University, Harbin, Heilongjiang; ¹⁸Union hospital, Tongji medical college, Huazhong University of Science and Technology, Hubei, China and ¹⁹Department of Hematology, Institute of Hematology, West China Hospital of Sichuan University, Chengdu, Sichuan, China

*YY, YL, and HS contributed equally as first authors.

Correspondence: B. Liu
liubingcheng@ihcams.ac.cn

W. Li
lee937@126.com

H. Zhu
zhuhuanling@scu.edu.cn

Received: December 30, 2023.

Accepted: June 19, 2024.

Early view: June 27, 2024.

<https://doi.org/10.3324/haematol.2023.284892>

©2024 Ferrata Storti Foundation

Published under a CC BY-NC license



Supplementary file

Title: Safety and efficacy of flumatinib as later-line therapy in patients with chronic myeloid leukemia

Supplementary Table 1: Potential predictive factors of cumulative response to later-line flumatinib treatment by multivariate Cox analysis

Resistance	CCyR/MR2		MMR		DMR	
	HR	P Value	HR	P Value	HR	P Value
No vs to IM	0.709 (0.469-1.07)	0.102	0.541 (0.346-0.845)	0.007	0.721 (0.378-1.374)	0.32
No vs to 2G TKI	0.409 (0.236—0.708)	0.001	0.189 (0.091-0.392)	0.000	0.074 (0.01-0.543)	0.01
To IM vs to 2G TKI	0.577 (0.33-1.008)	0.053	0.349 (0.163-0.745)	0.006	0.103 (0.013-0.791)	0.029

Abbreviations: CCyR, complete cytogenetic response; DMR, deep molecular response; 2G, second generation; HR, hazard ratio; IM, imatinib; MMR, major molecular response; TKI, tyrosine kinase inhibitor

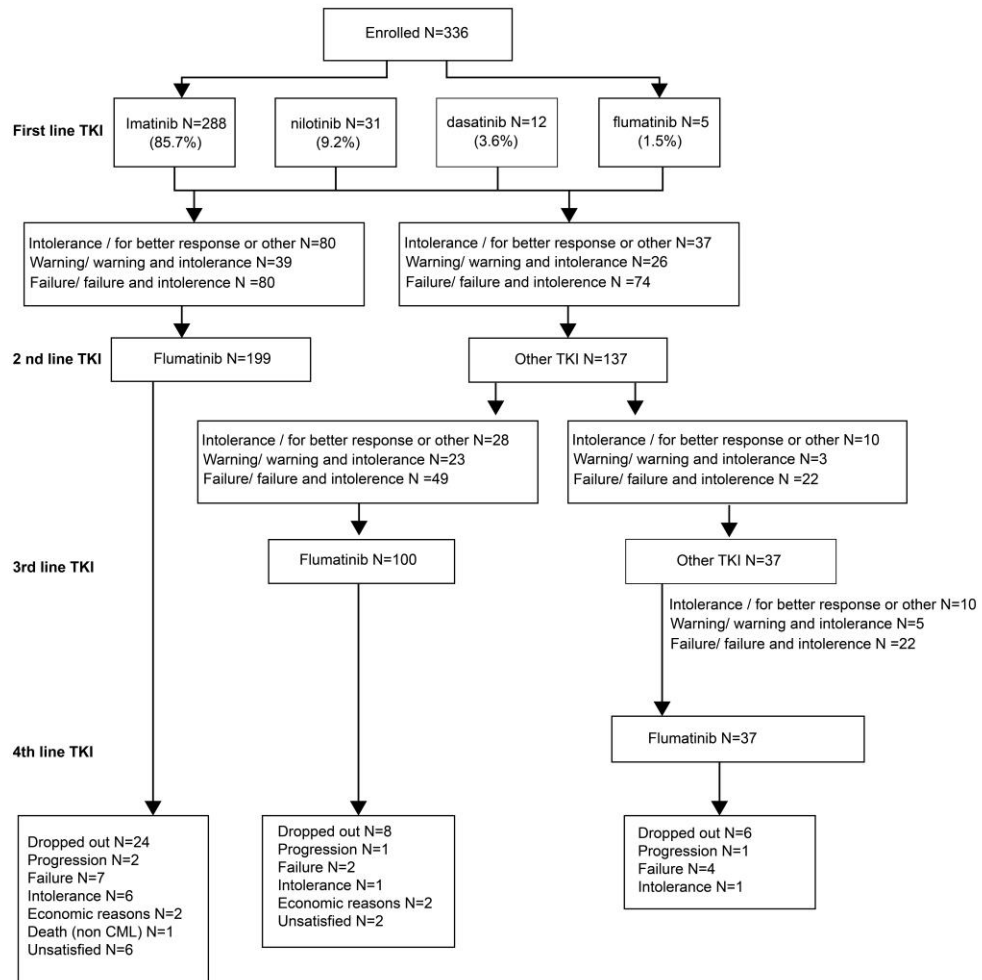
Supplementary Table 2: Patients with change of AE >5% in last TKI prior to flumatinib

AEs	Imatinib N=175		Nilotinib N=66		Dasatinib N=95	
	All n	Improved n	All n	Improved n	All n	Improved n
Cytopenia	19	18	13	8	16	14
Gastrointestinal	12	11	0	0	5	5
Edema	42	42	0	0	0	0
Rash and itch	22	21	7	7	0	0
Abnormality of liver function	0	0	8	8	0	0
Cardiac-related AE (not effusion)	0	0	9	7	0	0
Pericardial effusion	0	0	0	0	4	4
Pleural effusion	0	0	0	0	38	37
PAH	0	0	0	0	9	9

All values represented in terms of n which is number of affected patients

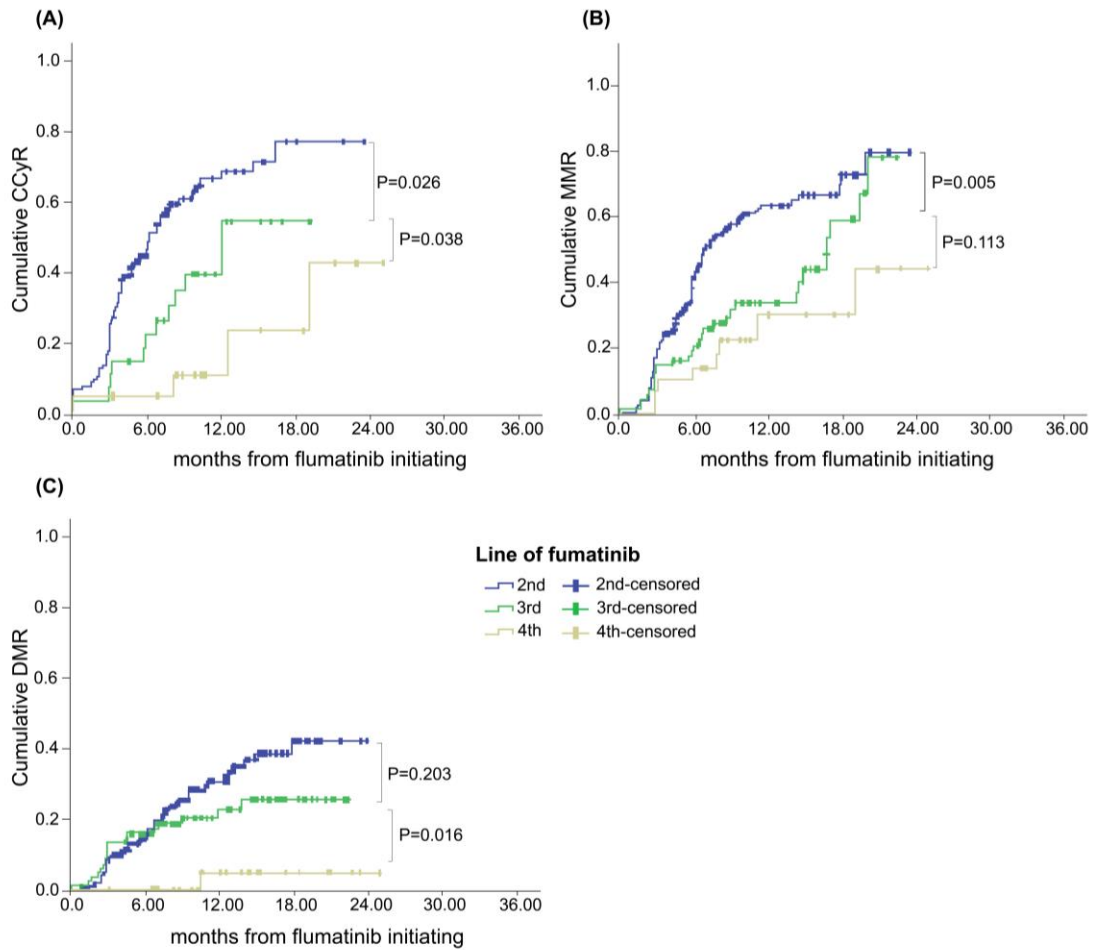
Abbreviations: AE, adverse event; N, total number of patients; n, number of patients presenting with particular AE; PAH, pulmonary arterial hypertension; TKI, tyrosine kinase inhibitor

Supplementary Figure 1: Patient disposition



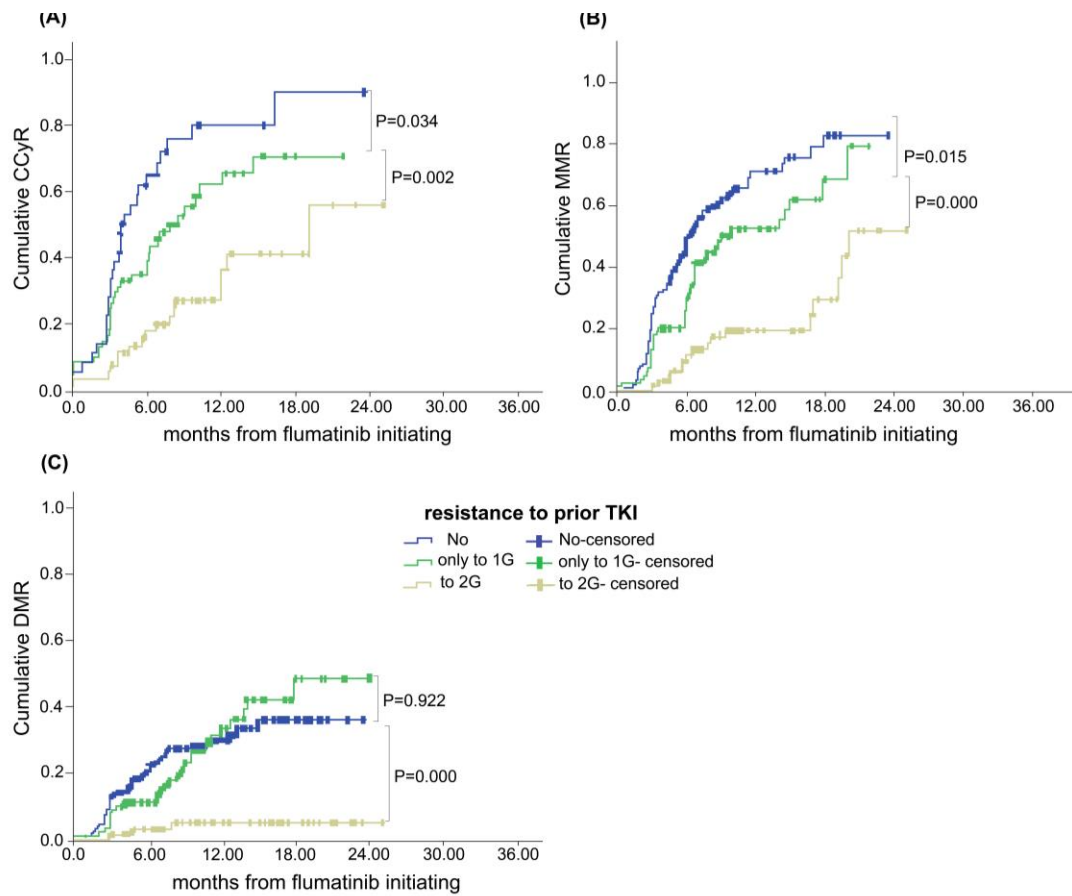
Abbreviations: CML, chronic myeloid leukemia; N, number of patients; TKI, tyrosine kinase inhibitor

Supplementary Figure 2: The cumulative response of CCyR (A), MMR (B) and DMR (C) over time in the patients without corresponding response at baseline according to the line of flumatinib treatment.



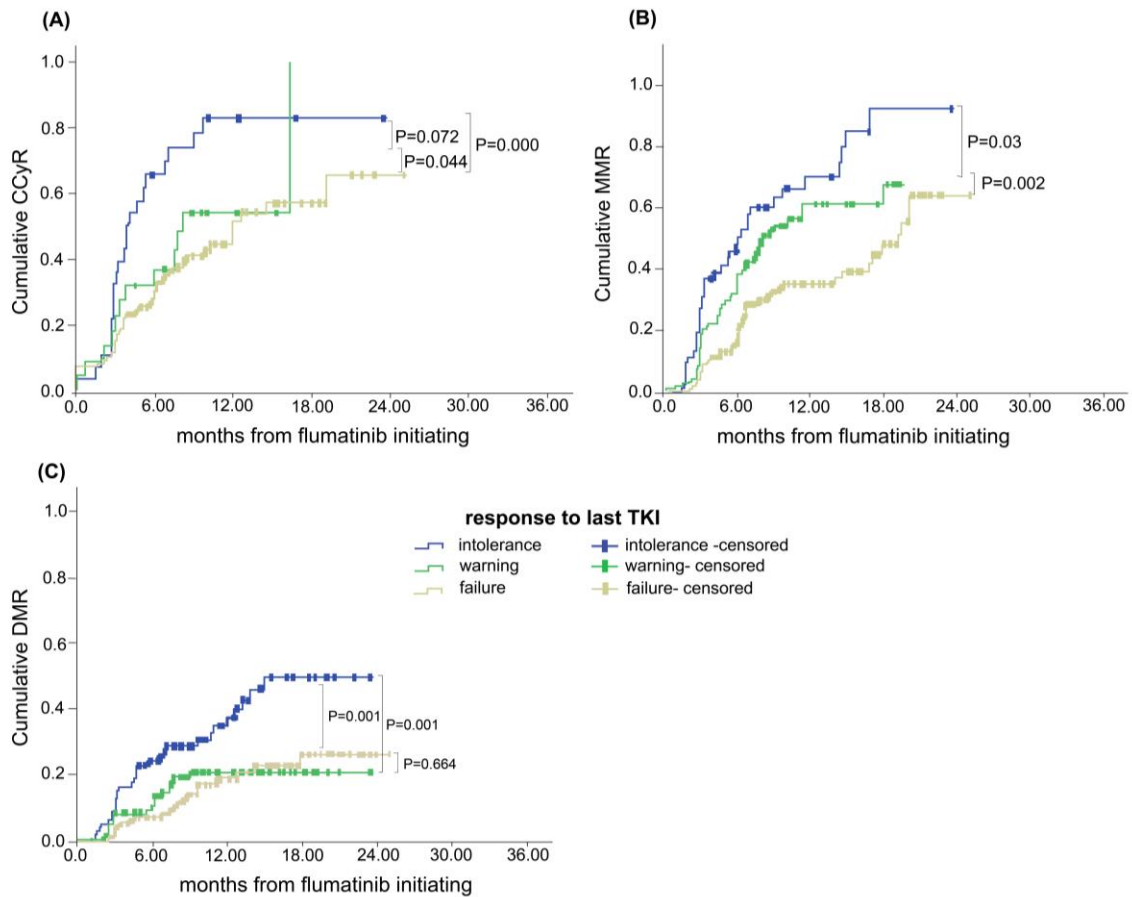
Abbreviations: CCyR, complete cytogenetic response; DMR, deep molecular response; MMR, major molecular response

Supplementary Figure 3: The cumulative response of CCyR (A), MMR (B), DMR (C) over time in the patients without corresponding response at base line according to the status of resistance to prior TKIs illustrated



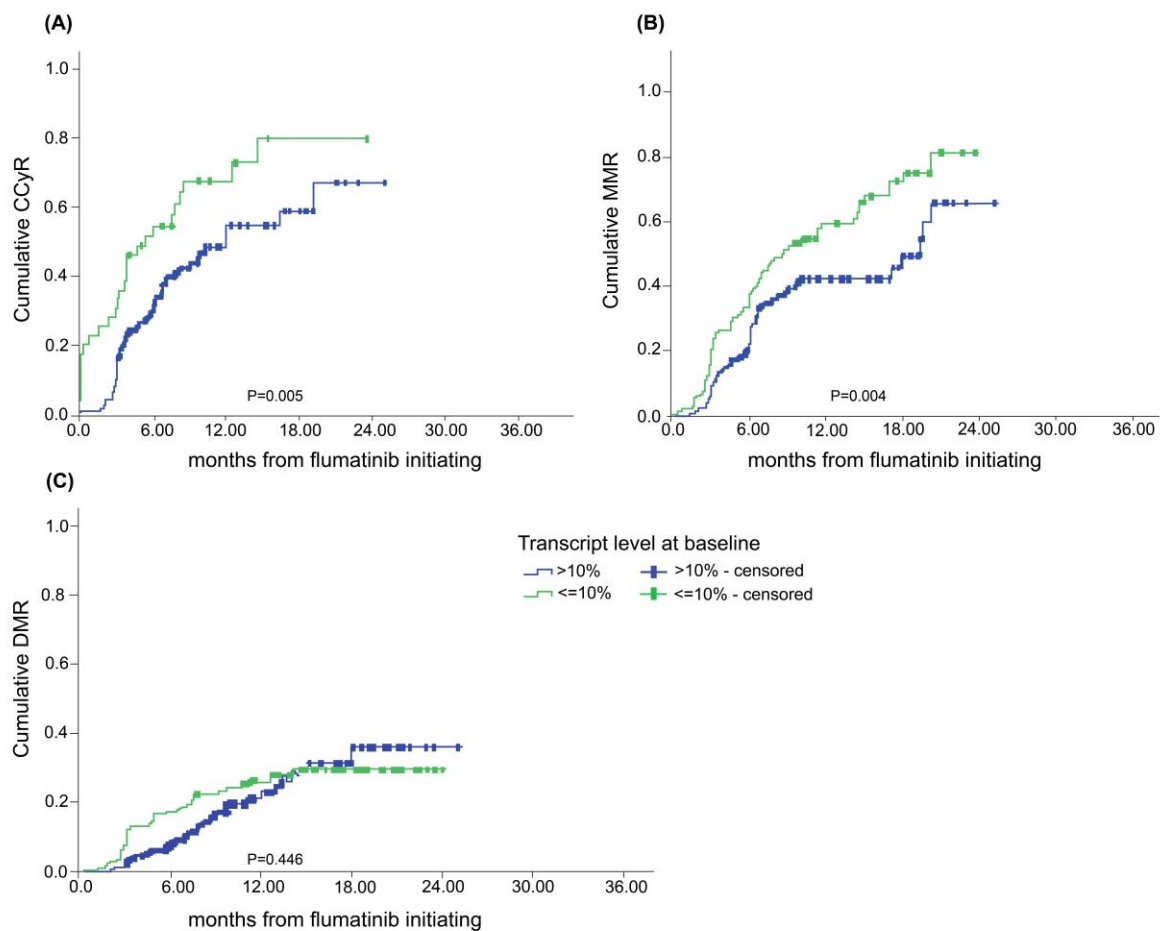
Abbreviations: CCyR, complete cytogenic response; DMR, deep molecular response; 1G, first-generation; 2G, second-generation; MMR, major molecular response; TKI, tyrosine kinase inhibitor

Supplementary Figure 4: The cumulative response of CCyR(A), MMR(B) and DMR (C) over time in the patients without corresponding response at base line according to the status of response to last TKI illustrated.



Abbreviations: CCyR, complete cytogenetic response; DMR, deep molecular response; MMR, major molecular response; TKI, tyrosine kinase inhibitor

Supplementary Figure 5: The cumulative response of CCyR (A), MMR (B) and DMR (C) over time in the patients without corresponding response at base line according to the transcript level at baseline illustrated



Abbreviations: CCyR, complete cytogenetic response; DMR, deep molecular response; MMR, major molecular response

