

Anti-CD19 chimeric antigen receptor T-cell therapy has less efficacy in Richter transformation than in *de novo* large B-cell lymphoma and transformed low-grade B-cell lymphoma

Ohad Benjamini,^{1,2*} Shalev Fried,^{1,2*} Roni Shouval,^{3,4} Jessica R. Flynn,⁵ Ofrat Beyar-Katz,^{6,7} Lori A. Leslie,⁸ Tsila Zuckerman,⁶ Ronit Yerushalmi,^{1,2} Noga Shem-Tov,^{1,2} Maria Lia Palomba,^{3,4} Ivetta Danylesko,^{1,2} Inbal Sdayoor,^{1,2} Hila Malka,⁶ Orit Itzhaki,⁹ Hyung Suh,⁸ Sean M. Devlin,⁵ Ronit Marcus,^{1,2} Parastoo B. Dahi,^{3,4} Elad Jacoby,^{2,10} Gunjan L. Shah,³ Craig S. Sauter,¹¹ Andrew Ip,^{8,12} Miguel-Angel Perales,^{3,4} Arnon Nagler,^{1,2} Avichai Shimoni,^{1,2} Michael Scordo^{3,4#} and Abraham Avigdor^{1,2#}

¹Division of Hematology and Bone Marrow Transplantation, Chaim Sheba Medical Center, Tel Hashomer, Israel; ²School of Medicine, Faculty of Medical and Health Sciences, Tel Aviv University, Tel-Aviv, Israel; ³Department of Medicine, Adult Bone Marrow Transplant Service, Cellular Therapy Service, Memorial Sloan Kettering Cancer Center, New York, NY, USA; ⁴Department of Medicine Weill Cornell Medical College, New York, NY, USA; ⁵Department of Biostatistics and Epidemiology, Memorial Sloan Kettering Cancer Center, New York, NY, USA; ⁶Department of Hematology and Bone Marrow Transplantation, Rambam Health Care Campus, Haifa, Israel; ⁷The Ruth and Bruce Rappaport Faculty of Medicine, Technion, Haifa, Israel; ⁸John Theurer Cancer Center, Hackensack, University Medical Center, Hackensack New Jersey, NJ, USA; ⁹Ella Lemelbaum Institute for Immuno Oncology, Chaim Sheba Medical Center, Tel Hashomer, Israel; ¹⁰Department of Pediatric Hematology-Oncology, Safra Children's Hospital, Chaim Sheba Medical Center, Tel Hashomer, Israel; ¹¹Department of Hematology and Medical Oncology, Cleveland Clinic, Cleveland, OH, USA and ¹²Hackensack Meridian School of Medicine, Nutley, NJ, USA

*OB and SF contributed equally as first authors.

#MS and AA contributed equally as senior authors.

Correspondence: O. Benjamini
ohad.benjamini@sheba.health.gov.il

Received: November 26, 2023.

Accepted: June 13, 2024.

Early view: June 20, 2024.

<https://doi.org/10.3324/haematol.2023.284664>

©2024 Ferrata Storti Foundation

Published under a CC BY-NC license



Table S1 Univariate and multivariate analysis to identify prognostic factors for progression free survival.

Variable	Univariate analysis			Multivariate analysis		
	N, Event	HR(95% CI)	p-value	N, Event	HR(95% CI)	p-value
Cohort	454,252		<0.001	419,232		<0.0001
De novo LBCL		- -			- -	
Transformed iNHL		0.71(0.59-0.86)			0.75(0.65-0.86)	
Transformed CLL		1.23(1.03,1.47)			1.55(1.29,1.87)	
Age at CAR-T infusion	454,252		0.36	419,232		0.19
		1.00(0.99-1.0)			0.99(0.98-1.00)	
LDH range pre-lymphodepletion	427,237		0.027	419,232		0.064
normal		- -			- -	
elevated		1.63(1.06-2.50)			1.62(0.97-2.69)	
CAR-T costimulatory domain	454,252		0.16	419,232		0.1
4-1BB		- -			- -	
CD28		0.87(0.71-1.06)			0.8(0.6-1.05)	
Pre-apheresis treatment lines	446,247		0.15	419,232		0.071
≤3		- -			- -	
4-5		1.07(0.77-1.48)			0.95(0.65-1.37)	
≥6		1.25(1.00-1.56)			1.21(0.89-1.65)	

¹HR = Hazard Ratio, CI = Confidence Interval, PFS progression free survival

Table S2 Univariate and multivariate analysis to identify prognostic factors for relapse.

Variable	Univariate analysis			Multivariate analysis		
	N, Event	HR(95% CI)	p-value	N, Event	HR(95% CI)	p-value
Cohort De novo LBCL Transformed iNHL Transformed CLL	454,252	- - 0.75(0.71-0.80) 1.38(1.17,0.80)	<0.001	419,225	- - 0.79(0.73-0.86) 1.76(1.36,2.29)	<0.0001
Age at CAR-T infusion	454,252	1.00(0.99-1.0)	0.40	419,225	0.99(0.98-1.00)	0.13
LDH range pre-lymphodepletion normal elevated	427,229	1.71(1.13-2.60)	0.012	419,225	1.73(1.05-2.83)	0.031
CAR-T costimulatory domain 4-1BB CD28	454,242	0.81(0.66-0.99)	0.038	419,225	0.71(0.55-0.92)	0.010
Pre-apheresis treatment lines ≤3 4-5 ≥6	446,238	1.06(0.74-1.54) 1.17(0.85-1.61)	0.62	419,225	0.94(0.61-1.45) 1.15(0.80-1.65)	0.31

¹HR = Hazard Ratio, CI = Confidence Interval, PFS progression free survival

Table S3 Univariate exploratory analysis to identify prognostic factors for survival and progression free survival in patients with Richters transformation.

Variable	Univariate analysis - OS			Univariate analysis - PFS		
	N, Event	HR(95% CI)	p-value	N, Event	HR(95% CI)	p-value
Age at CAR-T infusion	30,17	0.96(0.91-1.0)	0.075	30,18	0.93(0.87-1.00)	0.046
LDH range pre-lymphodepletion normal elevated	29,17	1.60(0.89-2.88)	0.12	29,18	1.72(0.76-3.89)	0.19
Pre-apheresis treatment lines ≤3 4-5 ≥6	28,17	2.00(1.25-3.19)	<0.001	28,17	1.48(1.01-2.16)	0.002
Bridging BTK exposure No exposed Exposed	30,17	1.51(0.51-4.44)	0.45	30,18	1.18(0.26-5.27)	0.83
Disease stage at apheresis ≤II ≥III-IV	27,16	1.61(0.70-3.71)	0.26	30,17	1.58(0.81-3.06)	0.18
Pre-CAR-T KPS (categorized) ≥90 <90	30,17	1.29(0.76-2.19)	0.34	30,17	0.96(0.41-2.26)	0.34

¹HR = Hazard Ratio, CI = Confidence Interval, OS overall survival, PFS progression free survival, KPS Karnofsky performance status

Table S4 Univariate and multivariate analysis to identify prognostic factors for overall survival excluding patients treated with POC CAR T .

Variable	Univariate analysis			Multivariate analysis		
	N, Event	HR(95% CI)	p-value	N, Event	HR(95% CI)	p-value
Cohort	373,141		<0.001	342,131		<0.001
De novo LBCL		- -			- -	
Transformed iNHL		0.65(0.56-0.76)			0.61(0.50-0.75)	
Transformed CLL		1.98(1.12-3.50)			2.26(1.68,3.06)	
Age at CAR-T infusion	373,141		<0.001	342, 131		0.021
		1.01(1.01-1.02)			1.01(1.00-1.02)	
LDH range pre-lymphodepletion	350,134		<0.001	342, 131		<0.001
normal		- -			- -	
elevated		3.01(2.07-4.38)			3.08(2.00-4.74)	
CAR-T costimulatory domain	373,141		0.074	342, 131		0.60
4-1BB		- -			- -	
CD28		0.82(0.65-1.02)			0.94(0.74-1.19)	
Pre-apheresis treatment lines	365,138		0.080	342, 131		<0.001
≤3		- -			- -	
4-5		1.12(0.79-1.59)			0.97(0.55-1.70)	
≥6		1.65(1.04-2.61)			1.56(1.04-2.34)	

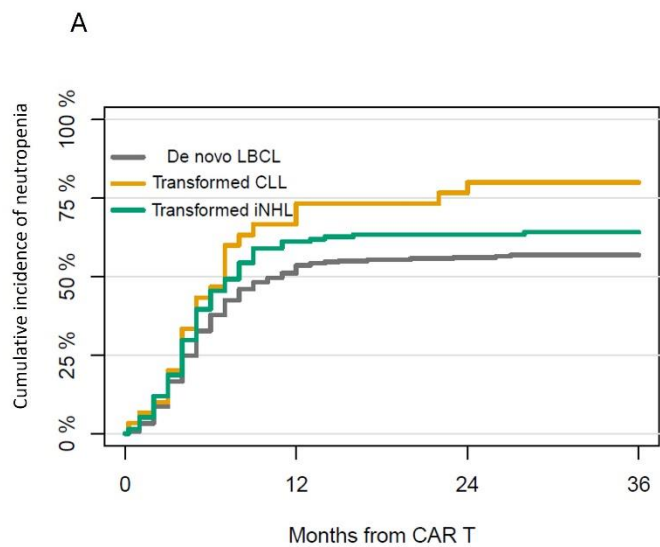
¹HR = Hazard Ratio, CI = Confidence Interval, PFS progression free survival

Table S5 Univariate and multivariate analysis to identify prognostic factors for progression free survival excluding patients treated with POC CAR T .

Variable	Univariate analysis			Multivariate analysis		
	N, Event	HR(95% CI)	p-value	N, Event	HR(95% CI)	p-value
Cohort De novo LBCL Transformed iNHL Transformed CLL	374,208	- - 0.77(0.66-0.90) 1.43(1.07-1.91)	<0.001	343,191	- - 0.81(0.68-0.96) 1.56(0.99,2.46)	<0.001
Age at CAR-T infusion	374,208	1.00(1.00-1.01)	<0.76	343, 191	1.00(0.99-1.00)	0.19
LDH range pre-lymphodepletion normal elevated	351,196	1.67(1.01-2.77)	<0.045	343, 191	1.65(0.89-3.06)	0.11
CAR-T costimulatory domain 4-1BB CD28	374,208	0.77(0.60-1.03)	0.083	343, 191	0.78(0.58-1.04)	0.092
Pre-apheresis treatment lines ≤3 4-5 ≥6	366,203	0.98(0.69-1.40) 1.25(0.95-1.65)	0.17	343, 191	0.88(0.54-1.44) 1.21(0.82-1.8)	<0.001

¹HR = Hazard Ratio, CI = Confidence Interval, PFS progression free survival

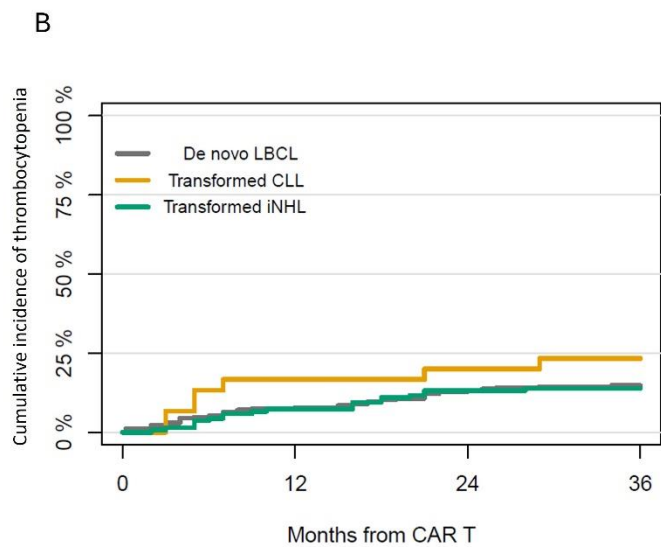
Supplementary figure S1 Cumulative incidence of neutropenia and thrombocytopenia.



At-risk	278	135	114	96
	30	9	6	5
	134	52	47	40

Characteristic	N	Days 30	Days 60	p-value ¹
cohort	442			0.025
DeNovo LBCL		57% (51%, 62%)	58% (52%, 63%)	
RT		80% (59%, 91%)	80% (59%, 91%)	
Transformed iNHL		64% (55%, 72%)	66% (57%, 73%)	

¹Gray's Test

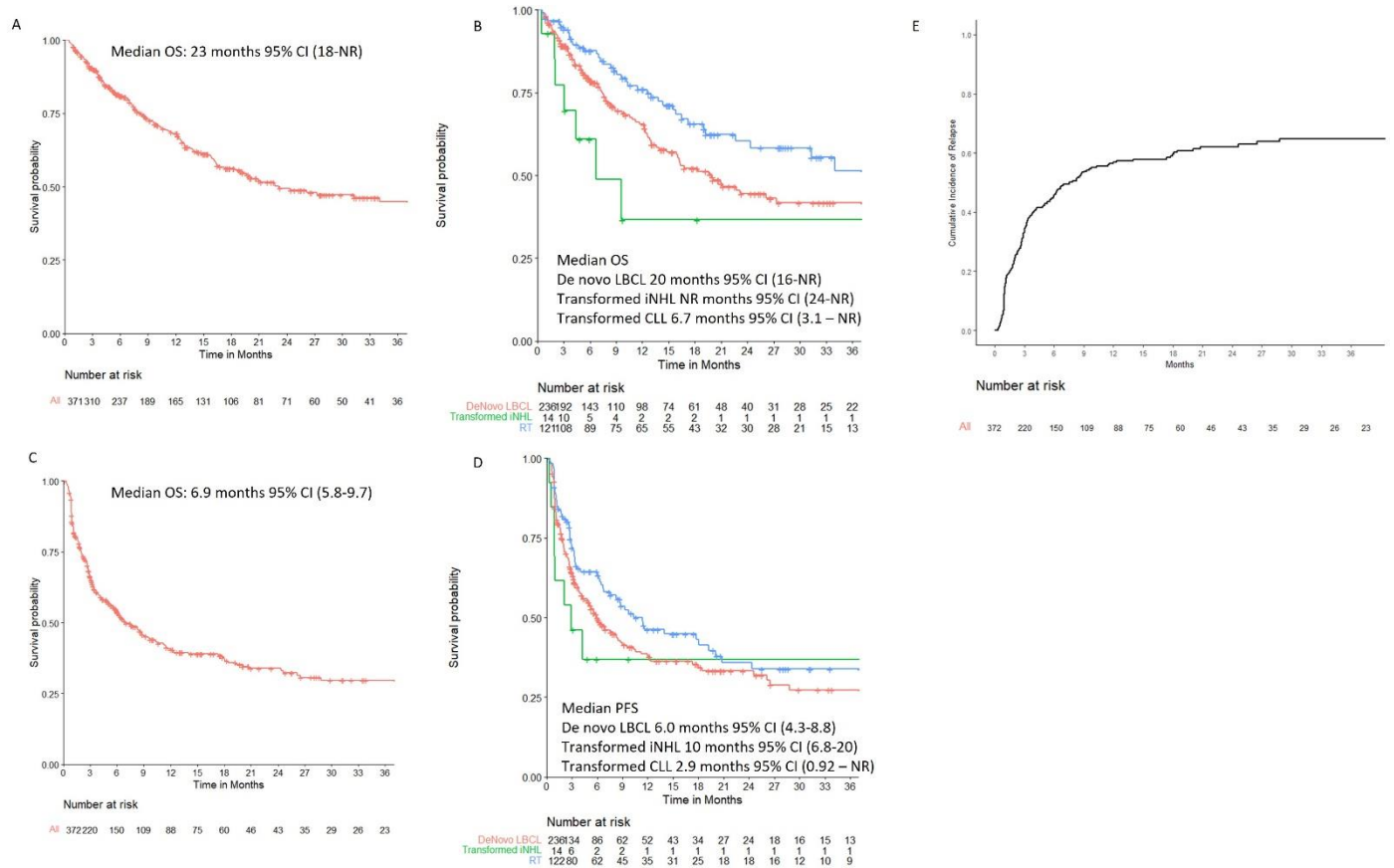


At-risk	271	250	223	186
	30	23	21	17
	137	126	117	103

Characteristic	N	Days 30	Days 60	p-value ¹
cohort	438			0.5
DeNovo LBCL		14% (11%, 19%)	15% (11%, 20%)	
RT		23% (10%, 40%)	23% (10%, 40%)	
Transformed iNHL		14% (8.7%, 20%)	15% (9.3%, 21%)	

¹Gray's Test

Supplementary figure S2 Survival outcomes according excluding patients treated with POC CAR



Survival outcomes according excluding patients treated with POC CAR T . (A) Overall survival of the cohort. **(B)** Overall survival according to histology. **(C)** Progression Free Survival of the cohort. **(D)** Progression Free Survival according to histology. **(E)** cumulative incidence of relapse for the cohort De novo LBCL: Transformed Low grade NHL and transformed CLL