

# Health-related quality of life in relapsed/refractory multiple myeloma treated with melflufen and dexamethasone: analyses from the phase III OCEAN study

## Authors

---

Fredrik H. Schjesvold,<sup>1</sup> Heinz Ludwig,<sup>2</sup> Sossana Delimpasi,<sup>3</sup> Pawel Robak,<sup>4</sup> Daniel Coriu,<sup>5</sup> Waldemar Tomczak,<sup>6</sup> Ludek Pour,<sup>7</sup> Ivan Spicka,<sup>8</sup> Meletios-Athanasios Dimopoulos,<sup>9</sup> Tamas Masszi,<sup>10</sup> Natalia G. Chernova,<sup>11</sup> Anna Sandberg,<sup>12</sup> Marcus Thuresson,<sup>12</sup> Stefan Norin,<sup>12</sup> Nicolaas A. Bakker,<sup>12</sup> Maria-Victoria Mateos,<sup>13</sup> Paul G. Richardson<sup>14</sup> and Pieter Sonneveld<sup>15</sup>

<sup>1</sup>Oslo Myeloma Center, Department of Hematology, Oslo University Hospital and KG Jebsen Center for B Cell Malignancies, University of Oslo, Oslo, Norway; <sup>2</sup>Department of Medicine I, Center for Medical Oncology and Hematology with Outpatient Department and Palliative Care, Wilhelminen Cancer Research Institute, Vienna, Austria; <sup>3</sup>Bone Marrow Transplantation Unit and Department of Hematology, Evangelismos Hospital, Athens, Greece; <sup>4</sup>Department of Hemato-Oncology, University Hospital Ostrava, Ostrava, Czech Republic; <sup>5</sup>University of Medicine and Pharmacy “Carol Davila”, Center of Hematology and Bone Marrow Transplantation, Fundeni Clinical Institute, Bucharest, Romania; <sup>6</sup>Department of Hemato-

Oncology and Bone Marrow Transplantation, Medical University of Lublin, Lublin, Poland; <sup>7</sup>Department of Internal Medicine, Hematology and Oncology, University Hospital Brno, Babak Myeloma Group, Faculty of Medicine, Masaryk University, Brno, Czech Republic; <sup>8</sup>First Department of Medicine - Department of Hematology, First Faculty of Medicine, Charles University and General Hospital in Prague, Prague, Czech Republic; <sup>9</sup>Department of Clinical Therapeutics, National and Kapodistrian University of Athens School of Medicine, Athens, Greece; <sup>10</sup>Department of Internal Medicine and Hematology, Semmelweis University, Budapest, Hungary; <sup>11</sup>National Research Center for Hematology, Moscow, Russia; <sup>12</sup>Oncopptides AB, Stockholm, Sweden; <sup>13</sup>Hospital Clínico Universitario de Salamanca/IBSAL/CIC, Salamanca, Spain; <sup>14</sup>Dana-Farber Cancer Institute, Boston, MA, USA and <sup>15</sup>Erasmus MC Cancer Institute, Rotterdam, the Netherlands

Correspondence:

F.H. SCHJESVOLD - fredrikschjesvold@gmail.com

<https://doi.org/10.3324/haematol.2023.284635>

**ONLINE SUPPLEMENTARY APPENDIX**

**Table of Contents**

SUPPLEMENTARY TABLE .....2  
    Table S1. Mean scores at baseline in the target and nontarget populations who received melflufen and dexamethasone. ....2  
SUPPLEMENTARY FIGURES .....3  
    Figure S1. Mean change from baseline through cycle 6 by treatment group.....3  
    Figure S2. Mean scores at baseline through cycle 6 in the target and nontarget populations who received melflufen plus dexamethasone.<sup>a</sup> .....4  
REFERENCES .....5

**SUPPLEMENTARY TABLE**

**Table S1.** Mean scores at baseline in the target and nontarget populations who received melflufen and dexamethasone.

<b>Baseline score, mean (range)</b>	<b>Target Population<sup>a</sup> (n=44)</b>	<b>Nontarget Population<sup>a</sup> (n=33)</b>
EORTC QLQ-C30 multi-item scales <sup>b</sup>		
Global health status/QoL	65.3 (25–100)	61.9 (16.7–100)
Physical functioning	73.2 (33.3–100)	71.5 (20–100)
Emotional functioning	83.3 (33.3–100)	78.0 (0–100)
EORTC QLQ-C30 symptom scales <sup>c</sup>		
Fatigue	30.7 (0–77.8)	40.7 (0–100)
Pain	26.2 (0–100)	35.4 (0–100)
EORTC MY20 score <sup>d</sup>		
Disease symptoms	23.0 (0–66.7)	27.1 (0–83.3)
Side effects of treatment	15.9 (0–73.3)	16.3 (0–66.7)
EQ-5D-3L VAS score <sup>e</sup>	64.8 (30–100)	62.8 (20–100)

ASCT: autologous stem cell transplant, EORTC: European Organisation for Research and Treatment of Cancer, EQ-5D-3L: European Quality of Life 5 Dimensions 3 Level Version, melflufen: melphalan flufenamide, MY20: Multiple Myeloma Module, QLQ-C30: Core Quality of Life Questionnaire, QoL: quality of life, TTP: time to progression, VAS: visual analog score.

<sup>a</sup>The target population included patients who had not received a prior ASCT or had TTP > 36 months after a prior ASCT; the nontarget population included patients with TTP < 36 months after a prior ASCT.

<sup>b</sup>EORTC QLQ-C30 global health status/QoL, emotional functioning, and physical functioning scores range from 0 to 100; a higher score indicates better function.<sup>1</sup>

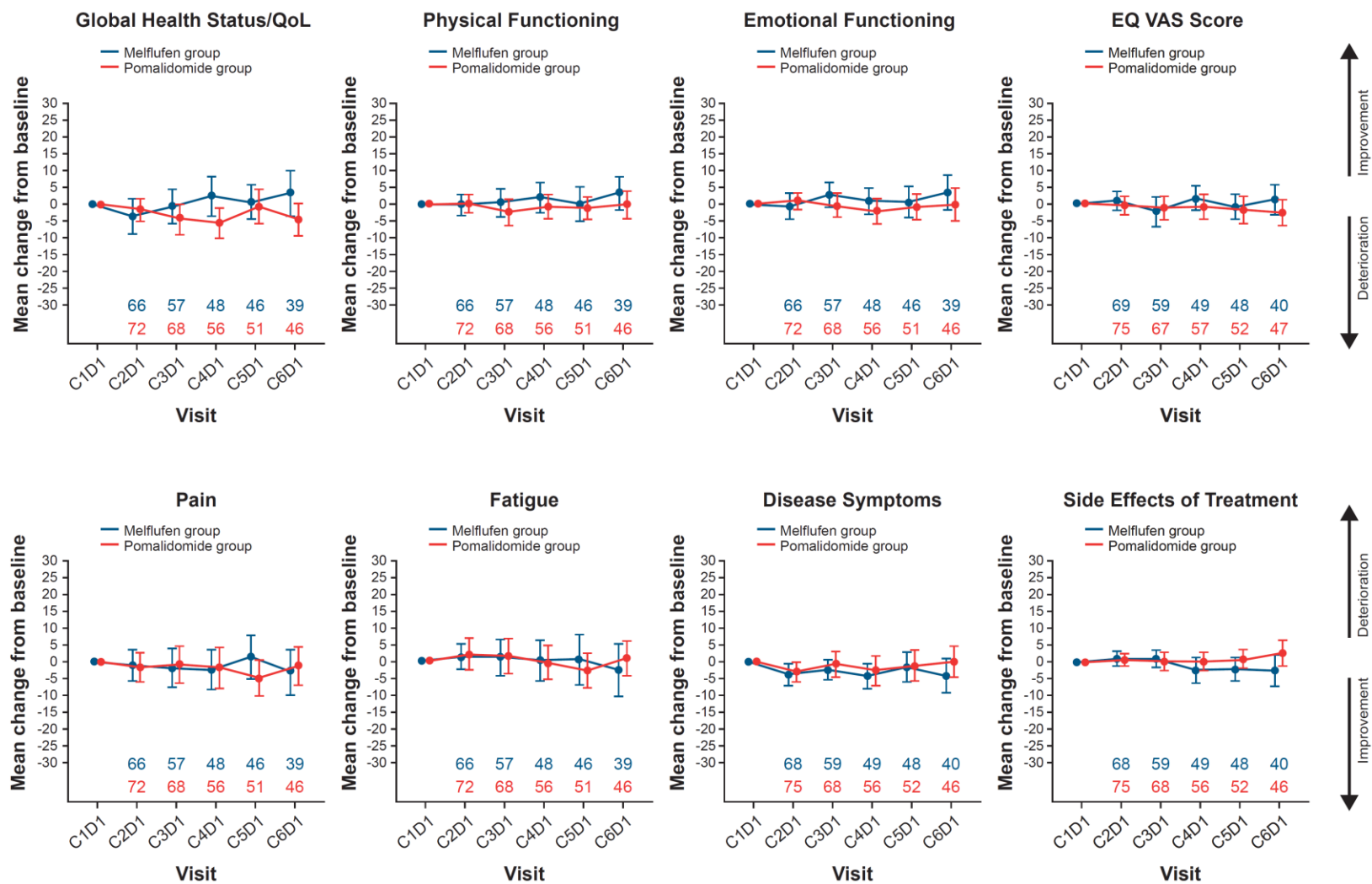
<sup>c</sup>EORTC QLQ-C30 fatigue and pain symptoms range from 0 to 100; a higher score indicates a higher severity of symptoms.<sup>2</sup>

<sup>d</sup>EORTC MY20 disease symptoms and side effects of treatment scores range from 0 to 100; a higher score indicates a higher severity of symptoms.<sup>2</sup>

<sup>e</sup>EQ-5D-3L VAS scores range from 0 to 100; a higher score indicates a better health state (0 equals death; 100 equals perfect health).<sup>3</sup>

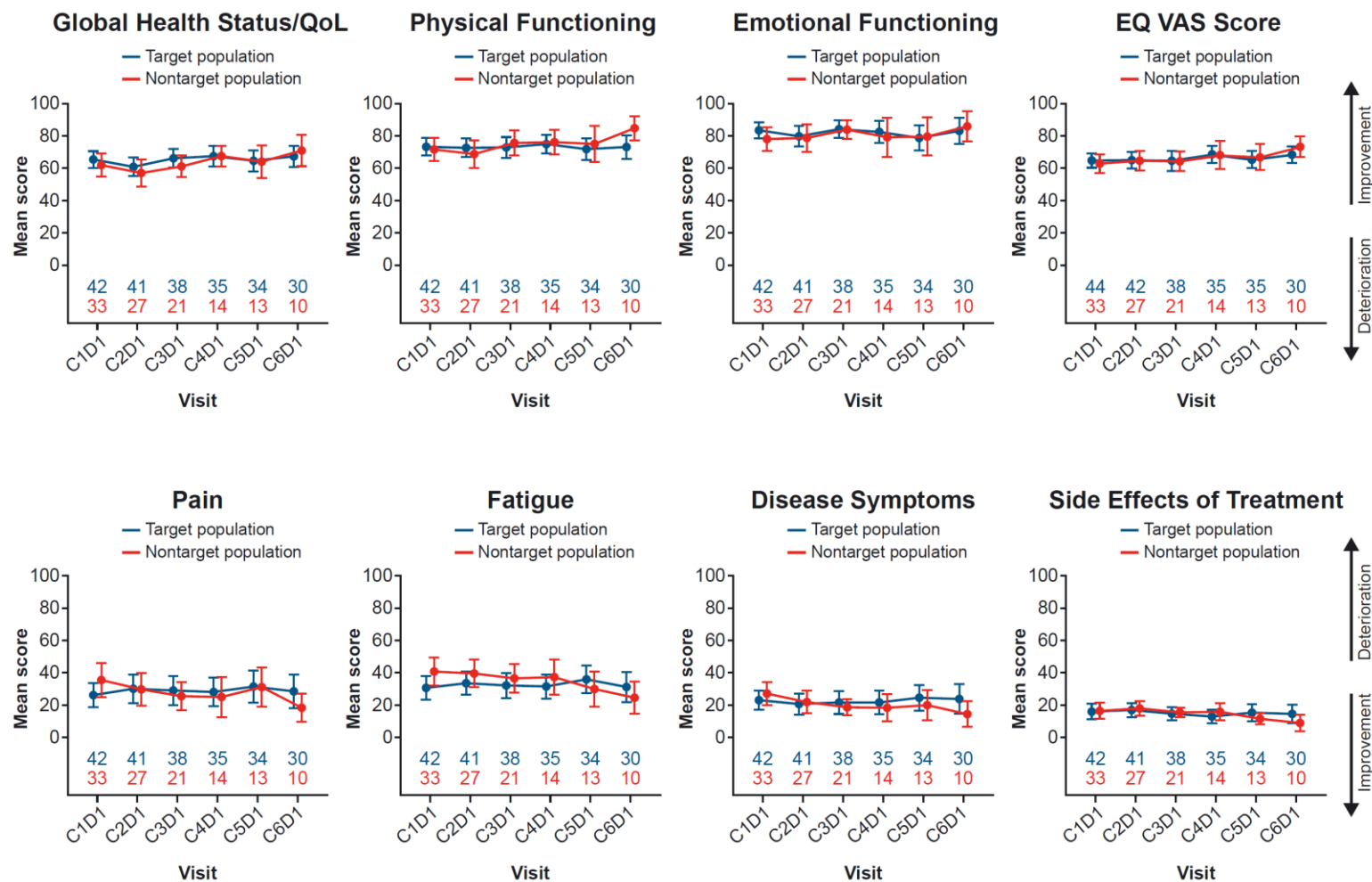
**SUPPLEMENTARY FIGURES**

**Figure S1.** Mean change from baseline through cycle 6 by treatment group.



C, cycle; D, day; EQ, European Quality of Life; melflufen, melphalan flufenamide; QoL, quality of life; VAS, visual analog scale.

**Figure S2.** Mean scores at baseline through cycle 6 in the target and nontarget populations who received melflufen plus dexamethasone.<sup>a</sup>



C, cycle; D, day; melflufen, melphalan flufenamide; QoL, quality of life; VAS, visual analog scale. <sup>a</sup>The target population included patients who had not received a prior ASCT or had TTP > 36 months after a prior ASCT; the nontarget population included patients with TTP < 36 months after a prior ASCT.

## REFERENCES

1. Fayers PM AN, Bjordal K, Groenvold M, Curran D, Bottomley A, on behalf of the EORTC Quality of Life Group. The EORTC QLQ-C30 Scoring Manual. 3rd ed. Brussels: European Organisation for Research and Treatment of Cancer, 2001.
2. Aaronson NK, Ahmedzai S, Bergman B, et al. The European Organization for Research and Treatment of Cancer QLQ-C30: A Quality-of-Life Instrument for Use in International Clinical Trials in Oncology. *JNCI: Journal of the National Cancer Institute*. 1993;85(5):365-376.
3. EuroQol G. EuroQol--a new facility for the measurement of health-related quality of life. *Health Policy*. 1990;16(3):199-208.