

Use of the Second Revision of the International Staging System for prognostic stratification of multiple myeloma patients in real-world clinical practice and the importance of sub-groups, including age

Authors

Yuka Uesugi, Daisuke Ikeda, Ami Fukumoto, Rikako Tabata, Daisuke Miura, Kentaro Narita, Masami Takeuchi and Kosei Matsue

Division of Hematology/Oncology, Kameda Medical Center, Kamogawa, Chiba, Japan

Correspondence:

Y. UESUGI - y-uesugi@med.showa-u.ac.jp

<https://doi.org/10.3324/haematol.2023.284173>

Received: September 1, 2023.

Accepted: November 22, 2023.

Early view: November 30, 2023.

©2024 Ferrata Storti Foundation



Published under a CC BY-NC license

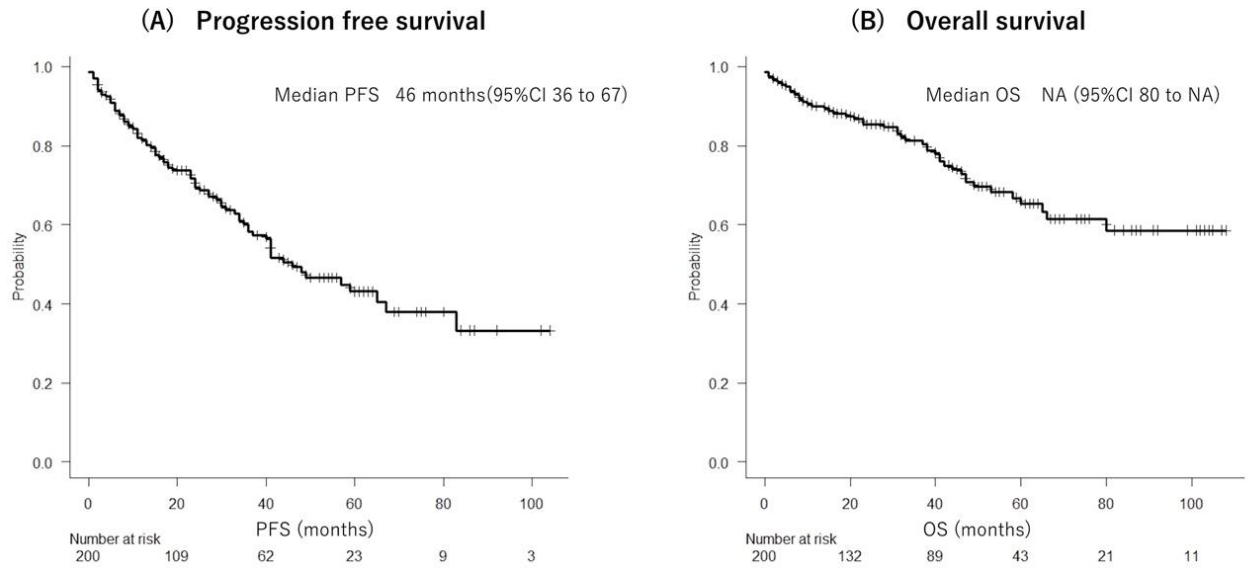
Supplementary Materials

Supplementary Table 1, Distribution of ISS and R-ISS, LDH and cytogenetic abnormalities according to the R2-ISS recategorization

		R2-ISS I	R2-ISS II	R2-ISS III	R2-ISS IV
	N	n=28	n=47	n=97	n=28
ISS I	47	28(60)	12(26)	7(14)	0
ISS II	67	0	35(52)	29(43)	3(4.5)
ISS III	86	0	0	61(71)	25(29)
R-ISS I	32	28(88)	4(12)	0	0
R-ISS II	125	0	43(34)	78(62)	4(3.2)
R-ISS III	43	0	0	19(44)	24(56)
Elevated LDH	63	0	6(9.5)	34(54)	23(37)
Del(17p)	15	0	1(2.1)	7(47)	7(47)
t(4;14)	19	0	1(5.3)	7(37)	11(58)
1q+	59	0	4(6.8)	33(56)	22(37)

Abbreviations: ISS; International Staging System, R-ISS; Revised-International Staging System, R2-ISS; Revision of Revised International Staging System, LDH; Lactate dehydrogenase

Supplementary Figure 1, Progression free survival and overall survival of the entire cohort



Supplementary Figure 2, Kaplan-Meier survival curves according to the R2-ISS in transplant eligible patients(A, B) and transplant in-eligible patients(C,D)

A and C; Progression free survival, C and D; Overall survival

