

# Long-term efficacy and safety of tucidinostat in patients with relapsed or refractory peripheral T-cell lymphoma: final analysis of phase IIb results

Shinya Rai,<sup>1</sup> Won Seog Kim,<sup>2</sup> Kiyoshi Ando,<sup>3\*</sup> Ilseung Choi,<sup>4</sup> Koji Izutsu,<sup>5</sup> Norifumi Tsukamoto,<sup>6</sup> Dai Maruyama,<sup>7</sup> Kunihiro Tsukasaki,<sup>8</sup> Junya Kuroda,<sup>9</sup> Jun Ando,<sup>10</sup> Michihiro Hidaka,<sup>11</sup> Youngil Koh,<sup>12</sup> Hisashi Kato,<sup>13</sup> Toshiki Uchida,<sup>14</sup> Deok Hwan Yang,<sup>15</sup> Kenji Ishitsuka,<sup>16</sup> Kenichi Ishizawa,<sup>17</sup> Jin Seok Kim,<sup>18</sup> Hong Ghi Lee,<sup>19</sup> Hironobu Minami,<sup>20</sup> Hyeon Seok Eom,<sup>21</sup> Mitsutoshi Kurosawa,<sup>22</sup> Jae Hoon Lee,<sup>23</sup> Jong Seok Lee,<sup>24</sup> Won Sik Lee,<sup>25</sup> Hirokazu Nagai,<sup>26</sup> Takero Shindo,<sup>27</sup> Dok Hyun Yoon,<sup>28</sup> Shinichiro Yoshida,<sup>29</sup> Mireille Gillings,<sup>30</sup> Hiroshi Onogi<sup>31</sup> and Kensei Tobinai<sup>5</sup>

<sup>1</sup>Department of Hematology and Rheumatology, Faculty of Medicine, Kindai University, Osaka-Sayama, Japan; <sup>2</sup>Division of Hematology Oncology, Samsung Medical Center, Sungkyunkwan University School of Medicine, Seoul, Korea; <sup>3</sup>Hematology and Oncology, Tokai University Hospital, Isehara, Japan; <sup>4</sup>Hematology, National Hospital Organization Kyushu Cancer Center, Fukuoka, Japan; <sup>5</sup>Department of Hematology, National Cancer Center Hospital, Tokyo, Japan; <sup>6</sup>Oncology Center, Gunma University Hospital, Maebashi, Japan; <sup>7</sup>Department of Hematology Oncology, Cancer Institute Hospital, Japanese Foundation for Cancer Research, Tokyo, Japan; <sup>8</sup>Hematology, International Medical Center, Saitama Medical University, Saitama, Japan; <sup>9</sup>Hematology and Oncology, Kyoto Prefectural University of Medicine, Kyoto, Japan; <sup>10</sup>Department of Hematology, Juntendo University School of Medicine, Tokyo, Japan; <sup>11</sup>Hematology, National Hospital Organization Kumamoto Medical Center, Kumamoto, Japan; <sup>12</sup>Internal Medicine, Seoul National University Hospital, Seoul, Korea; <sup>13</sup>Hematology and Oncology, Osaka University Graduate School of Medicine, Suita, Japan; <sup>14</sup>Hematology and Oncology, Japanese Red Cross Aichi Medical Center Nagoya Daini Hospital, Nagoya, Japan; <sup>15</sup>Hematology-Oncology, Chonnam

National University Hwasun Hospital, Chonnam National Medical School, Gwangju, Korea; <sup>16</sup>Hematology and Rheumatology, Kagoshima University Hospital, Kagoshima, Japan; <sup>17</sup>Third Internal Medicine, Yamagata University Hospital, Yamagata, Japan; <sup>18</sup>Division of Hematology, Department of Internal Medicine, Yonsei University College of Medicine, Severance Hospital, Seoul, Korea; <sup>19</sup>Hematology and Oncology, Konkuk University Medical Center, Seoul, Korea; <sup>20</sup>Medical Oncology/Hematology, Kobe University Hospital, Kobe, Japan; <sup>21</sup>Center for Hematologic Malignancy, National Cancer Center, Goyang-si, Korea; <sup>22</sup>Hematology, National Hospital Organization Hokkaido Cancer Center, Sapporo, Japan; <sup>23</sup>Division of Hematology, Department of Internal Medicine, Gachon University Gil Medical Center, Incheon, Korea; <sup>24</sup>Division of Hematology-Oncology, Seoul National University Bundang Hospital, Gyeonggi, Korea; <sup>25</sup>Internal Medicine, Inje University Busan Paik Hospital, Busan, Korea; <sup>26</sup>Department of Hematology, National Hospital Organization Nagoya Medical Center, Nagoya, Japan; <sup>27</sup>Hematology and Oncology, Kyoto University Hospital, Kyoto, Japan; <sup>28</sup>Department of Oncology, Asan Medical Center, University of Ulsan College of Medicine, Seoul, Korea; <sup>29</sup>Hematology, National Hospital Organization Nagasaki Medical Center, Omura, Japan; <sup>30</sup>HUYABIO International, San Diego, CA, USA and <sup>31</sup>Huya Japan GK, Tokyo, Japan

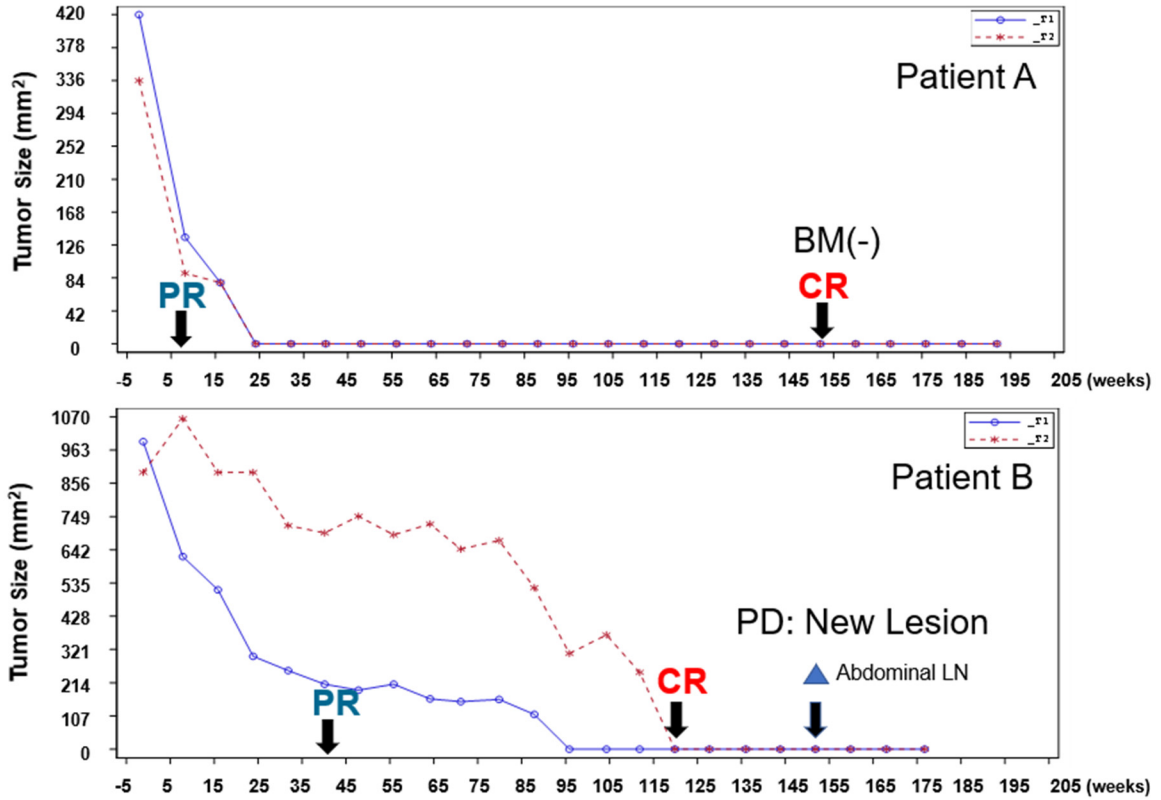
\*Current address: Department of Hematology and Oncology, Hiroshima University, Hiroshima, Japan

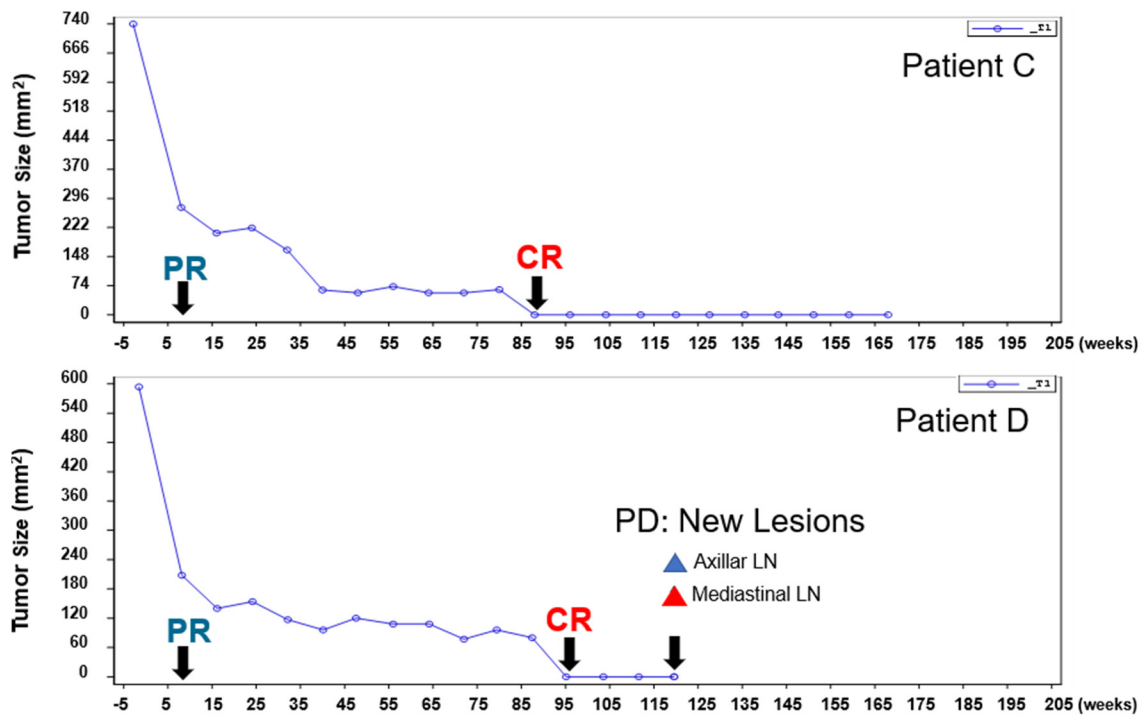
Correspondence:  
S. RAI - rai@med.kindai.ac.jp

<https://doi.org/10.3324/haematol.2023.283992>

**Supplementary Figure 1.**

**Tumor change by individual subject who achieved CR after the primary analysis**

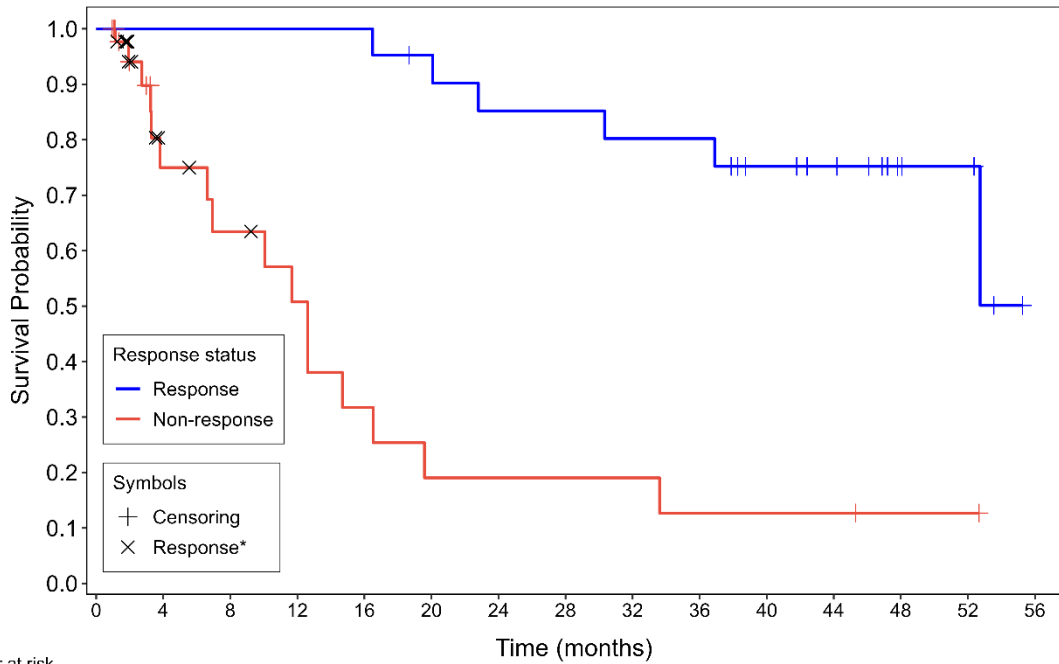




BM = Bone Marrow, CR = complete response, LN = lymph node, PD = progression disease, PR = partial response, T = target

**Supplementary Figure 2.**

**(A) Simon- Makuch estimates of overall survival by response status** These survival curves were drawn by designating objective response as a time-dependent covariate to remove a bias (guarantee-time bias) related to differences in time to response and to take into consideration that the patient’s response status may change over time.

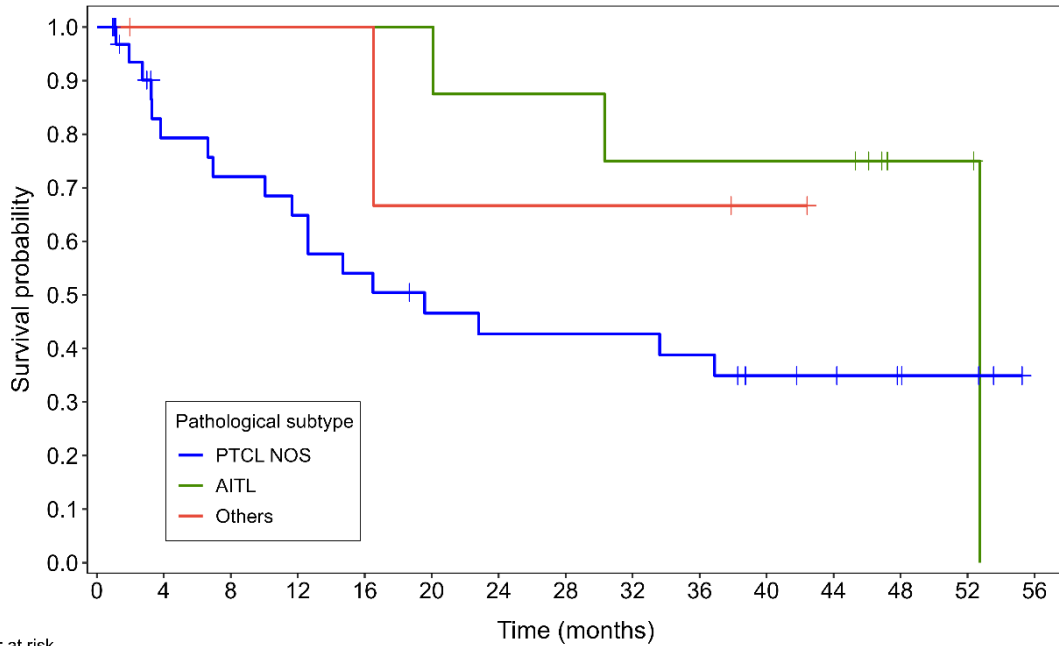


Number at risk

Response	0	19	20	21	21	19	18	18	17	16	13	11	6	5	0
Non-response	46	15	12	9	6	4	3	3	3	3	2	2	1	1	0

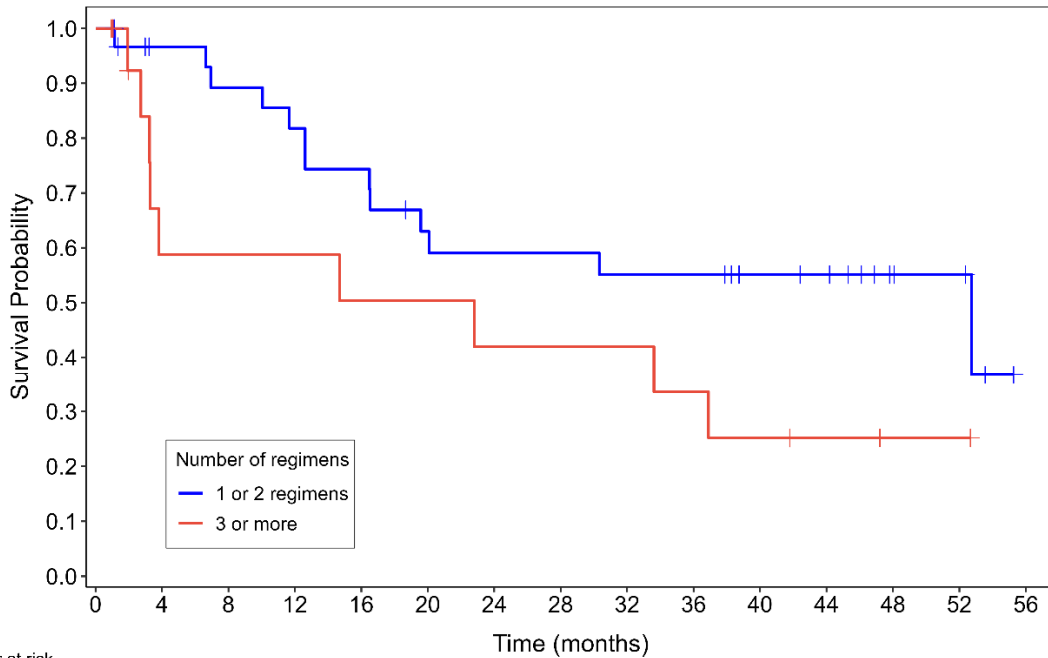
\*The symbol X represents the time point at which a patient's response status changed from “non-response” to “response.”

**(B) Kaplan-Meier plot of Overall Survival by PTCL subtype**



Number at risk	0	4	8	12	16	20	24	28	32	36	40	44	48	52	56
PTCL NOS	34	22	20	18	15	12	11	11	11	10	7	6	4	3	0
AITL	8	8	8	8	8	8	7	7	6	6	6	6	2	2	0
Others	4	3	3	3	3	2	2	2	2	2	1	0	0	0	0

**(C) Kaplan-Meier plot of Overall Survival by prior therapy number**



Number at risk	0	4	8	12	16	20	24	28	32	36	40	44	48	52	56
1 or 2 regimens	31	26	24	22	20	16	15	15	14	14	11	10	5	4	0
3 or more	15	7	7	7	6	6	5	5	5	4	3	2	1	1	0

**Supplementary Table 1.**

**AEs regardless of causal relationship to tucidinostat observed in  $\geq 10\%$  of patients (n=55).**

<b>Adverse event</b>	<b>Any Grade, n (%)</b>	<b><math>\geq</math> Grade 3, n (%)</b>
Number of patients with at least one AE	55 (100)	48 (87)
Thrombocytopenia	46 (84)	30 (55)
Neutropenia	32 (58)	21 (38)
Leukopenia	25 (46)	11 (20)
Anemia	19 (35)	10 (18)
Diarrhea	19 (35)	1 (2)
Lymphopenia	17 (31)	13 (24)
Decreased appetite	14 (26)	2 (4)
Nausea	12 (22)	0 (0)
Pyrexia	13 (24)	0 (0)
Blood alkaline phosphatase increased	8 (15)	1 (2)
Gamma-glutamyltransferase increased	8 (15)	3 (6)
Malaise	9 (16)	0 (0)
Aspartate aminotransferase increased	7 (13)	0 (0)
Cough	7 (13)	0 (0)

<b>Adverse event</b>	<b>Any Grade, n (%)</b>	<b>≥ Grade 3, n (%)</b>
Headache	7 (13)	0 (0)
Weight decreased	7 (13)	1 (2)
Fatigue	6 (11)	0 (0)
Alanine aminotransferase increased	6 (11)	0 (0)
Back pain	6 (11)	0 (0)
Muscle spasms	6 (11)	0 (0)
Abbreviations: n: number of subjects; AE: adverse event. Anemia: Anemia/Hemoglobin decreased Leukopenia: Leukopenia/White blood cell count decreased Lymphopenia: Lymphocyte count decreased/Lymphopenia Neutropenia: Neutropenia/Neutrophil count decreased/Granulocytopenia Thrombocytopenia: Thrombocytopenia/Platelet count decreased		