

Elotuzumab plus pomalidomide and dexamethasone in relapsed/refractory multiple myeloma: a multicenter, retrospective, real-world experience with 200 cases outside of controlled clinical trials

Massimo Gentile,^{1,2} Ernesto Vigna,¹ Salvatore Palmieri,³ Monica Galli,⁴ Daniele Derudas,⁵ Roberto Mina,⁶ Roberta Della Pepa,⁷ Renato Zambello,⁸ Enrica Antonia Martino,¹ Antonella Bruzzese,¹ Silvia Mangiacavalli,⁹ Elena Zamagni,^{10,11} Catello Califano,¹² Maurizio Musso,¹³ Concetta Conticello,¹⁴ Claudio Cerchione,¹⁵ Giuseppe Mele,¹⁶ Nicola Di Renzo,¹⁷ Massimo Offidani,¹⁸ Giuseppe Tarantini,¹⁹ Gloria Margiotta Casaluci,²⁰ Angela Rago,²¹ Roberto Ria,²² Giuseppina Uccello,²³ Gregorio Barilà,²⁴ Gaetano Palumbo,²⁵ Alessandra Pompa,²⁶ Donatella Vincelli,²⁷ Marino Brunori,²⁸ Fabrizio Accardi,²⁹ Valeria Amico,³⁰ Angela Amendola,³¹ Raffaele Fontana,³² Velia Bongarzone,³³ Bernardo Rossini,³⁴ Emilia Cotzia,³⁵ Alessandro Gozzetti,³⁶ Rita Rizzi,³⁷ Nicola Sgherza,³⁷ Eleonora Ferretti,³⁸ Giuseppe Bertuglia,⁶ Davide Nappi,¹⁵ Maria Teresa Petrucci,³⁹ Francesco Di Raimondo,¹⁴ Antonino Neri,³⁸ Fortunato Morabito⁴⁰ and Pellegrino Musto³⁷

¹Department of Onco-Hematology, Hematology Unit, Azienda Ospedaliera Annunziata, Cosenza;

²Department of Pharmacy, Health and Nutritional Science, University of Calabria, Rende; ³Hematology Unit, Ospedale Cardarelli, Naples; ⁴Hematology and Bone Marrow Transplant Unit, Azienda Socio-Sanitaria Territoriale-Papa Giovanni XXIII, Bergamo; ⁵Department of Hematology, Businco Hospital, Cagliari; ⁶Division of Hematology, AOU Città della Salute e della Scienza di Torino, University of Turin, Turin; ⁷Hematology Unit, Department of Clinical Medicine and Surgery, University of Naples “Federico II”, Naples; ⁸University of Padova, Department of Medicine, Hematology Unit and Veneto Institute of Molecular Medicine, Padova; ⁹Hematology Division, Department of Hematology-Oncology, IRCCS Fondazione Policlinico San Matteo, Pavia; ¹⁰IRCCS Azienda Ospedaliero-Universitaria di Bologna, Istituto di Ematologia “Seràgnoli”, Bologna; ¹¹Dipartimento di Medicina Specialistica, Diagnostica e Sperimentale, Università di Bologna, Bologna; ¹²Onco-Hematology Unit, “A. Tortora” Hospital, Pagani; ¹³Onco-Hematology Unit and TMO UOC, Department of Oncology, Palermo; ¹⁴Division of Hematology, Azienda Policlinico-S. Marco, University of Catania, Catania; ¹⁵Hematology Unit, IRCCS Istituto Romagnolo per lo Studio dei Tumori (IRST) “Dino Amadori”, Meldola; ¹⁶Department of Hematology, Hospital Perrino, Brindisi; ¹⁷Department of Hematology, “Vito Fazzi” Hospital, Lecce; ¹⁸Hematology Unit, AOU Ospedali Riuniti di Ancona, Ancona; ¹⁹Hematology Unit, “Dimiccoli” Hospital, Barletta; ²⁰Division of Hematology, Department of Translational Medicine, University of Eastern Piedmont, Novara; ²¹Haematology Unit, ASL Roma 1 Santo Spirito Hospital of Rome, Rome; ²²Department of Biomedical Science, Internal Medicine “G. Baccelli”, Policlinico, University of Bari “Aldo Moro” Medical School, Bari; ²³Hematology Department, “G. Garibaldi” Hospital, Catania; ²⁴University of Padova, Department of Medicine, Hematology Unit, Veneto Institute of Molecular Medicine, Padova; ²⁵Department of Hematology, Hospital University Riuniti, Foggia; ²⁶Hematology Unit, Fondazione IRCCS Ca’ Granda, Ospedale Maggiore Policlinico, Milan; ²⁷Department of Hemato-Oncology and Radiotherapy, Hematology Unit, Great Metropolitan Hospital “Bianchi-Melacrino-Morelli”, Reggio Calabria; ²⁸Internal Medicine, Ospedale S. Croce, Azienda Ospedaliera Ospedali Riuniti Marche Nord, Fano; ²⁹Department of Hematology I, Azienda Ospedaliera Ospedali Riuniti Villa Sofia-Cervello, Palermo; ³⁰Hematology Unit, AORN “G Rummo”, Benevento; ³¹Hematology Unit, Azienda Ospedaliera Regionale “San Carlo”, Potenza; ³²Hematology and Transplant Center, University Hospital “San Giovanni di Dio e Ruggi d’Aragona”, Salerno; ³³Department of Hematology San Giovanni-Addolorata Hospital, Rome; ³⁴Hematology, Ospedale Giovanni Paolo II°, Bari; ³⁵Section of Hematology, Ospedale “E. Muscatello-Augusta”, Siracusa; ³⁶Hematology, Azienda Ospedaliera Universitaria Senese, University of Siena, Siena; ³⁷Hematology Section, Department of Precision and Regenerative Medicine and Ionian Area (DiMePRE-J), “Aldo Moro” University of Bari, Bari; ³⁸Scientific Directorate, Azienda USL-IRCCS di Reggio Emilia, Reggio Emilia; ³⁹Department of Translational and Precision Medicine, Hematology Azienda Policlinico Umberto I Sapienza University of Rome, Rome and ⁴⁰Biotechnology Research Unit, AO of Cosenza, Cosenza, Italy

Correspondence: M. Gentile
massim.gentile@tiscali.it

A. Neri
antonino.neri@ausl.re.it

Received: April 7, 2023.

Accepted: July 6, 2023.

Early view: July 13, 2023.

<https://doi.org/10.3324/haematol.2023.283251>

©2024 Ferrata Storti Foundation

Published under a CC BY-NC license



SUPPLEMENTARY APPENDIX CONTENTS

Elotuzumab plus pomalidomide and dexamethasone in relapsed/refractory multiple myeloma: a multicenter, retrospective real-world experience with 200 cases outside of controlled clinical trials

Massimo Gentile^{1,2}, Ernesto Vigna¹, Salvatore Palmieri³, Monica Galli⁴, Daniele Derudas⁵, Roberto Mina⁶, Roberta Della Pepa⁷, Renato Zambello⁸, Enrica Antonia Martino¹, Antonella Bruzzese¹, Silvia Mangiacavalli⁹, Elena Zamagni^{10,11}, Catello Califano¹², Maurizio Musso¹³, Concetta Conticello¹⁴, Claudio Cerchione¹⁵, Giuseppe Mele¹⁶, Nicola Di Renzo¹⁷, Massimo Offidani¹⁸, Giuseppe Tarantini¹⁹, Gloria Margiotta Casaluci²⁰, Angela Rago²¹, Roberto Ria²², Giuseppina Uccello²³, Gregorio Barilà²⁴, Gaetano Palumbo²⁵, Alessandra Pompa²⁶, Donatella Vincelli²⁷, Marino Brunori²⁸, Fabrizio Accardi²⁹, Valeria Amico³⁰, Angela Amendola³¹, Raffaele Fontana³², Velia Bongarzoni³³, Bernardo Rossini³⁴, Emilia Cotzia³⁵, Alessandro Gozzetti³⁶, Rita Rizzi³⁷, Nicola Sgherza³⁷, Eleonora Ferretti³⁸, Giuseppe Bertuglia⁶, Davide Nappi¹⁵, Maria Teresa Petrucci³⁹, Francesco Di Raimondo¹⁴, Antonino Neri³⁸, Fortunato Morabito⁴⁰, Pellegrino Musto³⁷.

¹Department of Onco-hematology, Hematology Unit, Azienda Ospedaliera Annunziata, Cosenza, Italy; ²Department of Pharmacy, Health and Nutritional Science, University of Calabria, Rende, Italy; ³Hematology Unit, Ospedale Cardarelli, Napoli, Italy; ⁴Hematology and Bone Marrow Transplant Unit, Azienda Socio-Sanitaria Territoriale-Papa Giovanni XXIII, Bergamo, Italy; ⁵Department of Hematology, Businco Hospital, Cagliari, Italy; ⁶Division of Hematology, AOU Città della Salute e della Scienza di Torino, University of Torino, Torino, Italy; ⁷Hematology Unit, Department of Clinical Medicine and Surgery, University of Naples "Federico II", Naples, Italy; ⁸University of Padova, Department of Medicine, Hematology Unit, Italy; Veneto Institute of Molecular Medicine, Padova, Italy; ⁹Hematology Division, Department of Hematology-Oncology, IRCCS Fondazione Policlinico San Matteo, Pavia, Italy; ¹⁰IRCCS Azienda Ospedaliero-Universitaria di Bologna, Istituto di Ematologia "Seràgnoli", Bologna, Italy; ¹¹Dipartimento di Medicina Specialistica, Diagnostica e Sperimentale, Università di Bologna, Bologna, Italy; ¹²Onco-Hematology Unit, "A. Tortora" Hospital, Pagani, Italy; ¹³Onco-Hematology Unit and TMO U.O.C., Department of Oncology, Palermo, Italy; ¹⁴Division of Hematology, Azienda Policlinico-S. Marco, University of Catania, Catania, Italy; ¹⁵Hematology Unit, IRCCS Istituto Romagnolo per lo Studio dei Tumori (IRST) "Dino Amadori"; ¹⁶Department of Hematology, Hospital Perrino, Brindisi, Italy; ¹⁷Department of Hematology, Hospital Vito Fazzi, Lecce, Italy; ¹⁸Hematology Unit, AOU Ospedali Riuniti di Ancona, Ancona, Italy; ¹⁹Hematology Unit, "Dimiccoli" Hospital, Barletta (BAT), Italy; ²⁰Division of Hematology, Department of Translational Medicine, University of Eastern Piedmont, Novara, Italy; ²¹Haematology Unit, ASL ROMA 1 Santo Spirito Hospital of Rome Rome Italy; ²²Department of Biomedical Science, Internal Medicine "G. Baccelli", Policlinico, University of Bari "Aldo Moro" Medical School, Bari, Italy; ²³Hematology Department, G. Garibaldi Hospital, Catania, Italy; ²⁴University of Padova, Department of Medicine,

Hematology Unit, Italy; Veneto Institute of Molecular Medicine, Padova, Italy; ²⁵Department of Hematology, Hospital University Riuniti, Foggia, Italy; ²⁶Hematology Unit, Fondazione IRCCS Ca' Granda, Ospedale Maggiore Policlinico, Milano, Italy; ²⁷Department of Hemato-Oncology and Radiotherapy, Hematology Unit, Great Metropolitan Hospital "Bianchi-Melacrino-Morelli", Reggio Calabria, Italy; ²⁸Internal Medicine, Ospedale S. Croce, Azienda Ospedaliera Ospedali Riuniti Marche Nord, Fano, Italy; ²⁹Department of Hematology I, Azienda Ospedaliera Ospedali Riuniti Villa Sofia-Cervello, Palermo, Italy; ³⁰Hematology Unit, AORN G Rummo, Benevento, Italy; ³¹Hematology Unit, Azienda Ospedaliera Regionale "San Carlo", Potenza, Italy; ³²Hematology and Transplant Center, University Hospital "San Giovanni di Dio e Ruggi d'Aragona", Salerno, Italy; ³³Department of Hematology San Giovanni-Addolorata Hospital Rome Italy; ³⁴Haematology, Ospedale Giovanni Paolo II°, Bari, Italy; ³⁵Section of Hematology- Ospedale E. Muscatello-Augusta, Siracusa, Italy; ³⁶Hematology, Azienda Ospedaliera Universitaria Senese, University of Siena, Siena, Italy; ³⁷Hematology Section, Department of Precision and Regenerative Medicine and Ionian Area (DiMePre-J), University of Bari 'Aldo Moro', Bari, Italy; ³⁸Scientific Directorate, Azienda USL-IRCCS of Reggio Emilia, Reggio Emilia, Italy; ³⁹Department of Translational and Precision Medicine, Hematology Azienda Policlinico Umberto I Sapienza University of Rome, Rome, Italy; ⁴⁰Biotechnology Research Unit, AO of Cosenza, Cosenza, Italy.

Correspondence: Massimo Gentile, MD, Hematology Unit, AO of Cosenza, Italy; 87100 Cosenza, Italy; e-mail: massim.gentile@tiscali.it; ph: +39-0984-681329; fax: +39-0984-681329; Antonino Neri, MD, Scientific Directorate, Azienda USL-IRCCS of Reggio Emilia, Reggio Emilia, Italy; e-mail: antonino.neri@ausl.re.it; ph: +39-0522-296434; fax: +39-0522-296434.

Supplementary Table

Supplementary Figure Legends

Supplementary Figures

Supplementary Table 1. Main characteristics of patients at EloPd initiation according to FISH analysis availability.

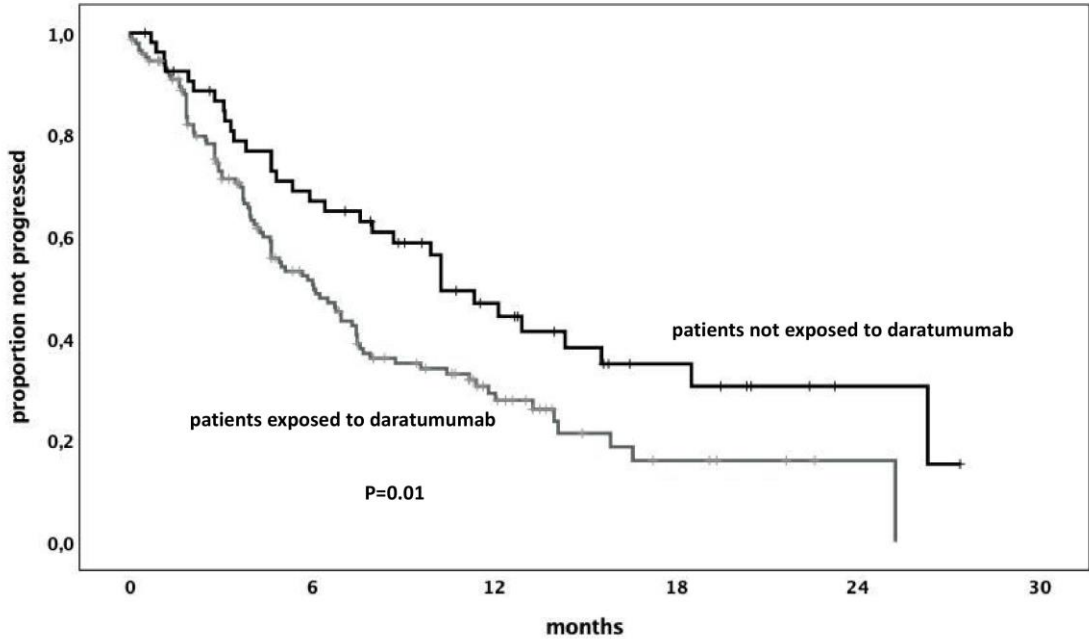
	No. of cases without FISH analysis available (%)	No. of cases with FISH analysis available (%)	P value
Age, (years)			
<70	54 (40)	32 (45)	0.48
≥70	66 (60)	48 (55)	
Sex			
Male	62 (51.7)	46 (57.5)	0.59
Female	58 (48.3)	34 (42.5)	
Paraproteins (isotype)			
Immunoglobulin G	71 (59.2)	50 (62.5)	0.63
Immunoglobulin A	28 (23.3)	16 (20)	
Immunoglobulin D	1 (0.8)	2 (2.5)	
Immunoglobulin M	2 (1.7)	0	
Light chain only	18 (15)	12 (15)	
Creatinine clearance (mL/min)			
≥60	72 (60)	60 (75)	0.03
<60	48 (40)	20 (25)	
Stage ISS, (%) (n=255)			
I	35 (39.2)	26 (32.5)	0.86
II	52 (43.3)	34 (42.5)	
III	33 (27.5)	20 (25)	
LDH			
Normal	85 (70.8)	57 (71.3)	0.95
Elevated	35 (29.2)	23 (28.7)	
Previous lines of therapy			
2	46 (57.5)	55 (45.8)	0.11
>2	34 (42.5)	65 (54.2)	
Previous ASCT			
No	60 (50)	41 (51.2)	0.86
Yes	60 (50)	39 (48.8)	
Previous daratumumab			
No	30 (25)	24 (30)	0.43
Yes	90 (75)	56 (70)	
Disease status			
Biochemical relapse	14 (11.7)	16 (20)	0.1
Symptomatic relapse	63 (52.5)	31 (38.8)	
Refractory to last treatment	43 (35.8)	33 (41.2)	

Supplementary Figures legend

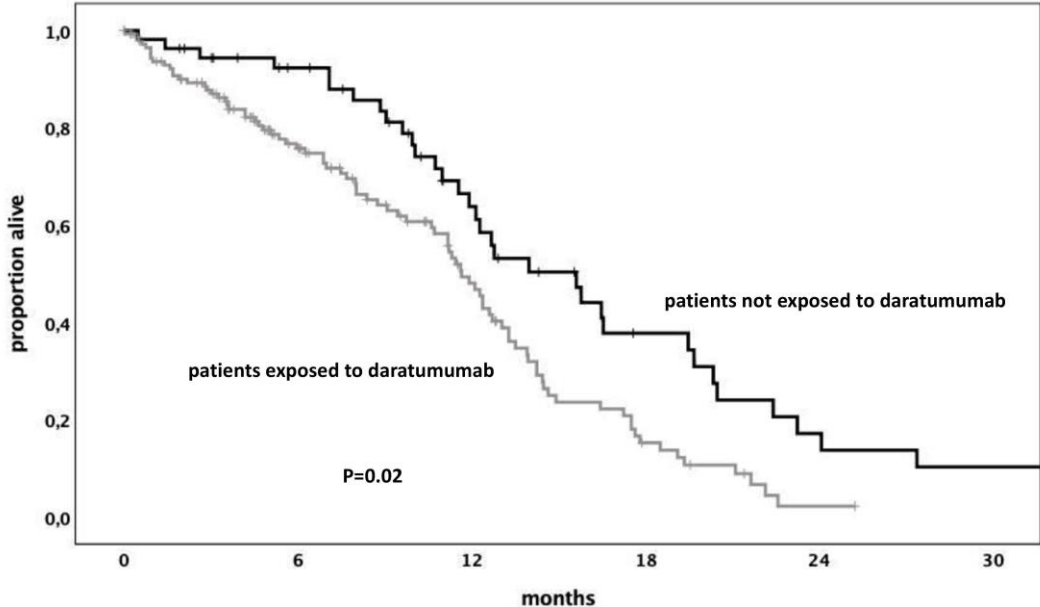
Supplementary Figure 1. Kaplan Meier curves for RRMM patients treated with EloPd according to daratumumab exposure. **Panel A.** Kaplan Meier curve of PFS. **Panel B.** Kaplan Meier curve of OS.

Supplementary Figure 2. Kaplan Meier curves for RRMM patients treated with EloPd according to FISH risk. **Panel A.** Kaplan Meier curve of PFS. **Panel B.** Kaplan Meier curve of OS.

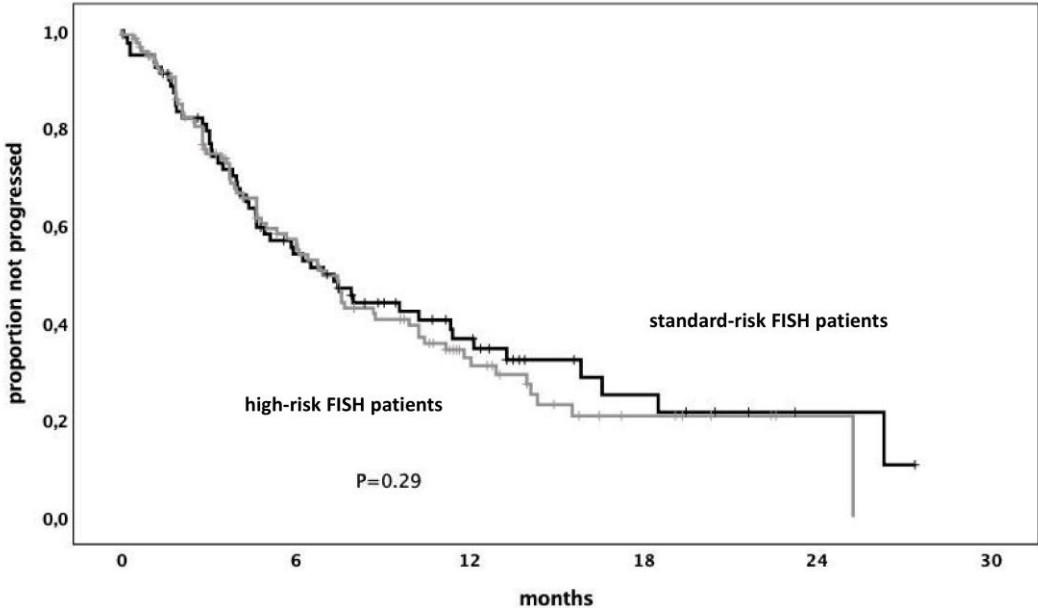
Supplementary Figure 1A



Supplementary Figure 1B



Supplementary Figure 2A



Supplementary Figure 2B

