

Amphiregulin as a biomarker for monitoring life-threatening acute graft-versus-host disease: secondary analysis of two prospective clinical trials

Authors

Shernan G. Holtan,¹ Najla El Jurdi,¹ Armin Rashidi,^{1,2} Brian C. Betts,¹ Connor Demorest,³ John P. Galvin,⁴ Margaret L. MacMillan,⁵ Daniel J. Weisdorf,¹ Angela Panoskaltzis-Mortari⁵ and Michael A. Pratta⁴

¹University of Minnesota, Adult Blood and Marrow Transplant & Cell Therapy Program, Minneapolis, MN; ²Fred Hutchinson Cancer Center, Seattle, WA; ³Biostatistics Core, Masonic Cancer Center, University of Minnesota, Minneapolis, MN; ⁴Incyte Corporation, Wilmington, DE and ⁵University of Minnesota, Pediatric Blood and Marrow Transplant & Cell Therapy Program, Minneapolis, MN, USA

Correspondence:

S. HOLTAN - sgholtan@umn.edu

<https://doi.org/10.3324/haematol.2023.283215>

Received: April 17, 2023.

Accepted: September 5, 2023.

Early view: September 14, 2023.

©2024 Ferrata Storti Foundation

Published under a CC BY-NC license 

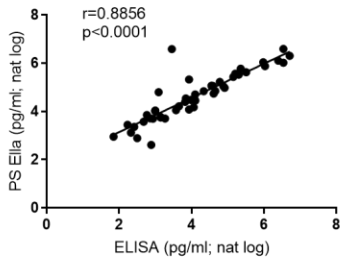
DData-sharing statement

Reasonable requests for data may be sent to the author for correspondence (SGH).

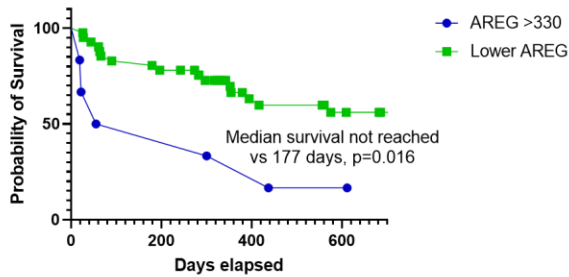
SUPPLEMENTAL FIGURES

Supplemental Figure 1

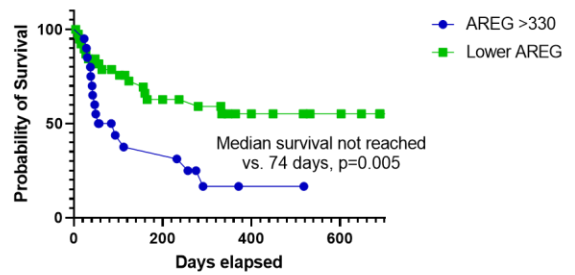
A Correlation of AREG Samples (N=47)
ELISA vs ProteinSimple Ella



B UMN (uhCG/EGF)
AREG Cutoff of 330 pg/ml

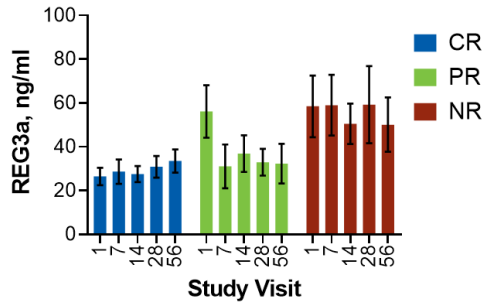
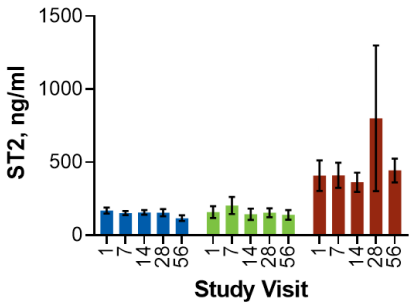


C REACH1 (ruxolitinib)
AREG Cutoff of 330 pg/ml



Supplemental Figure 2

UMN (uhCG/EGF)



REACH1 (ruxolitinib)

