

Outcome of combined modality treatment in first-line for stage I(E) peripheral T-cell lymphoma; a nationwide population-based cohort study from the Netherlands

Frederik O. Meeuwes,^{1,2} Mirian Brink,³ Wouter Plattel,² Marjolein W.M. van der Poel,⁴ Marie José Kersten,⁵ Mariëlle Wondergem,⁵ Lara Böhmer,⁶ F.J. Sherida H. Woei-A-Jin,⁷ Otto Visser,⁸ Rimke Oostvogels,⁹ Patty M. Jansen,¹⁰ Karen J. Neelis,¹¹ Anne P.G. Crijns,¹² Laurien A. Daniëls,¹³ Tjeerd J.F. Snijders,¹⁴ Joost S.P. Vermaat,¹⁵ Gerwin A. Huls² and Marcel Nijland²

¹Department of Hematology, Treant Hospital, Emmen, the Netherlands; ²Department of Hematology, University Medical Center Groningen, Groningen, the Netherlands; ³Department of Research and Development, Netherlands Comprehensive Cancer Organisation (IKNL), Utrecht, the Netherlands; ⁴Department of Hematology, GROW School for Oncology and Developmental Biology, Maastricht University Medical Center, Maastricht, the Netherlands; ⁵Department of Hematology, Amsterdam University Medical Centers, Cancer Center Amsterdam, Amsterdam, the Netherlands; ⁶Department of Hematology, Haga Hospital, The Hague, the Netherlands; ⁷Department of General Medical Oncology, University Hospitals Leuven, Leuven, Belgium; ⁸Department of Hematology, Isala Hospital, Zwolle, the Netherlands; ⁹Department of Hematology, University Medical Center Utrecht, Utrecht, the Netherlands; ¹⁰Department of Pathology, Leiden University Medical Center, Leiden, the Netherlands; ¹¹Department of Radiotherapy, Leiden University Medical Center, Leiden, the Netherlands; ¹²Department of Radiotherapy, University Medical Center Groningen, Groningen, the Netherlands; ¹³Department of Radiotherapy, Amsterdam University Medical Centers, Cancer Center Amsterdam, Amsterdam, the Netherlands; ¹⁴Department of Hematology, Medisch Spectrum Twente, Enschede, the Netherlands and ¹⁵Department of Hematology, Leiden University Medical Center, Leiden, the Netherlands

Correspondence: M. Nijland
m.nijland@umcg.nl

Received: March 26, 2023.
Accepted: September 27, 2023.
Early view: October 5, 2023.

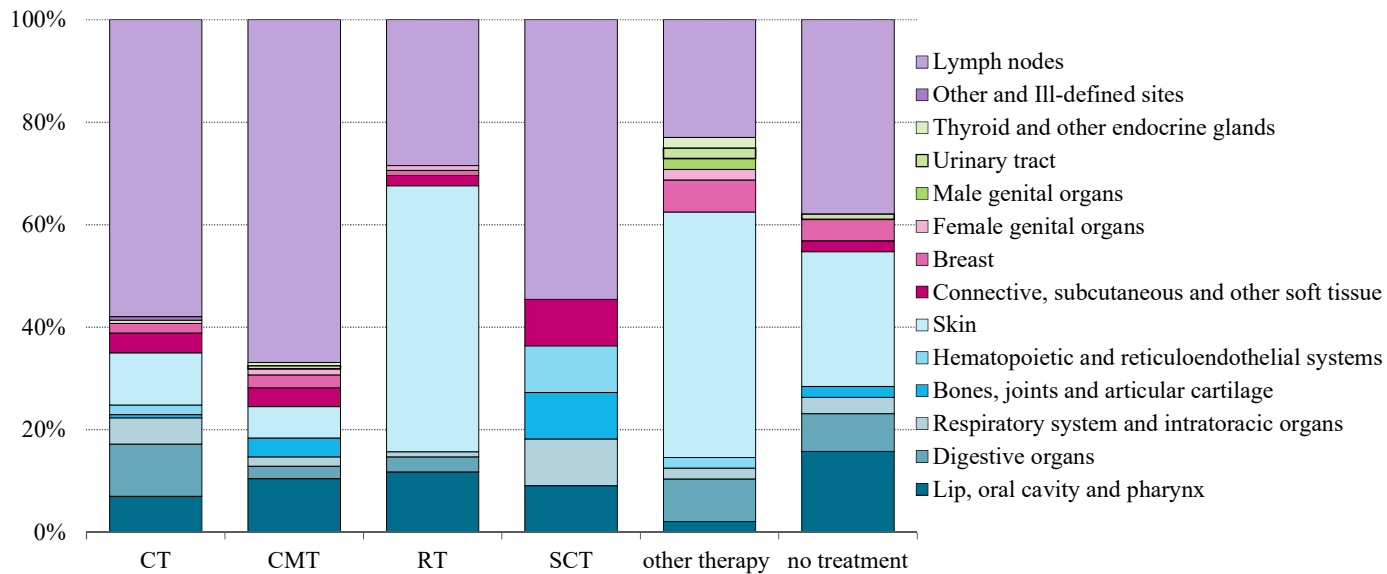
<https://doi.org/10.3324/haematol.2023.283174>

©2024 Ferrata Storti Foundation

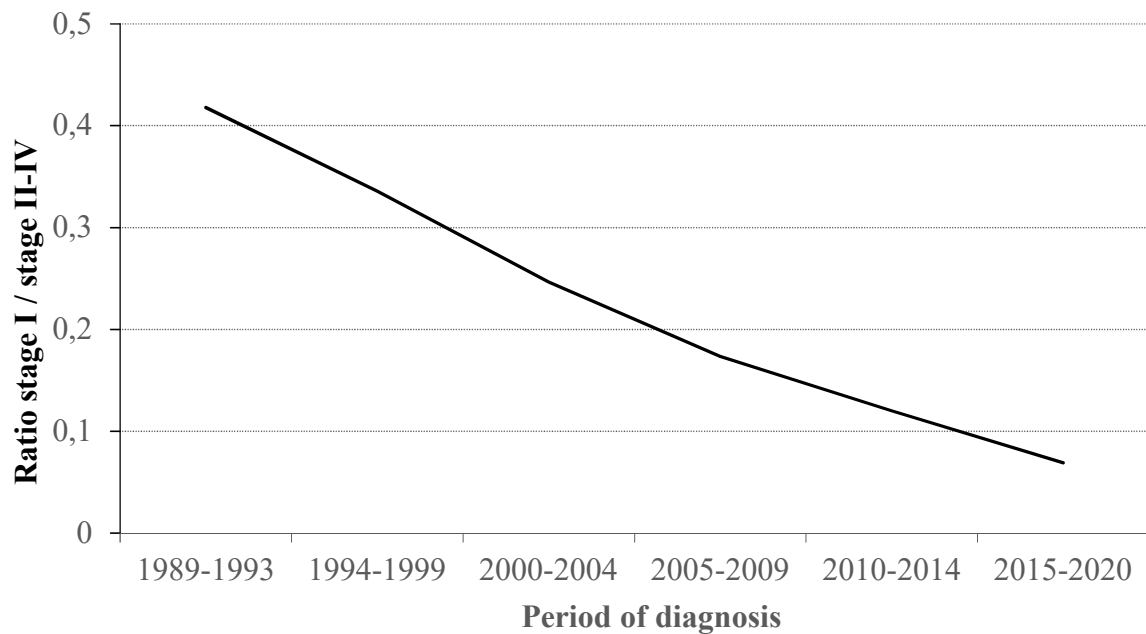
Published under a CC BY-NC license



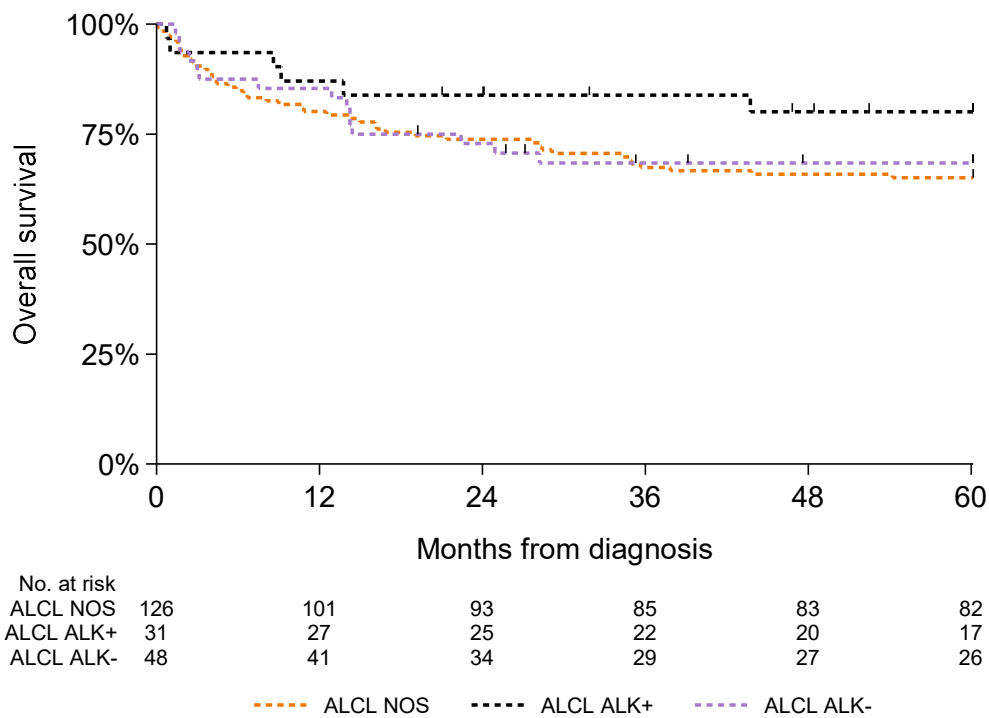
Supplementary material



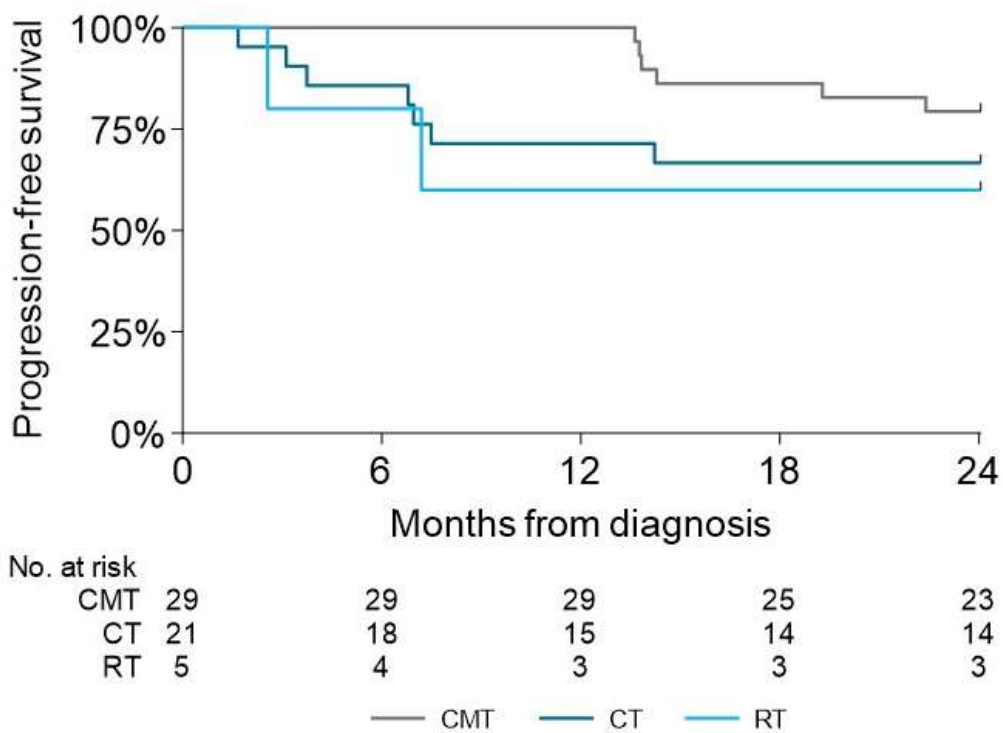
Supplemental Figure 1. Anatomical site of first clinical manifestation according to treatment modality



Supplemental Figure 2. Incidence ratio of Ann Arbor stage I PTCL NOS, ALCL and AITL versus Ann Arbor stage II-IV PTCL NOS, ALCL and AITL over time.



Supplemental Figure 3. Overall survival among patients with stage I(E) anaplastic large T-cell lymphoma, according to ALK-status.



Supplemental Figure 4. Progression-free survival for patients with stage I(E) anaplastic large T-cell lymphoma diagnosed in 2014-2019, according to treatment modalities.

	Univariable			Multivariable		
	HR	95% CI	<i>p</i>	HR	95% CI	<i>p</i>
First-line treatment						
CMT	1	Reference		1	Reference	
CT	1.73	0.75-3.99	0.20	1.64	1.21-2.21	<0.01
RT only	1.75	1.27-2.41	<0.01	1.12	0.81-1.56	0.49
Other therapy	1.29	0.83-2.00	0.25	0.89	0.57-1.38	0.59
No treatment	2.06	1.47-2.87	<0.01	1.55	1.10-2.17	0.01
Period of diagnosis						
2000-2020	1	Reference		-	-	
1989-1999	1.17	0.94-1.46	0.16	-	-	-
Sex						
Female	1	Reference		1	Reference	
Male	1.25	1.01-1.55	0.04	1.54	1.24-1.91	<0.01
Age per year increment	1.05	1.05-1.06	<0.01	1.06	1.05-1.07	<0.01
Subtype						
Anaplastic large T-cell lymphoma	1	Reference		-	-	
Peripheral T-cell lymphoma, NOS	1.29	1.03-1.63	0.03	-	-	
Angioimmunoblastic T-cell lymphoma	1.58	0.96-2.61	0.07	-	-	
Localisation						
Nodal	1	Reference		-	-	
Extranodal	1.03	0.82-1.30	0.78	-	-	-

Supplementary Table 1. Uni- and multivariate analyses for risk of mortality.