

Results from a phase I trial of pembrolizumab plus vorinostat in relapsed/refractory B-cell non-Hodgkin lymphoma

James Godfrey,¹ Matthew Mei,¹ Lu Chen,² Joo Y. Song,³ Victoria Bedell,³ L. Elizabeth Budde,¹ Saro Armenian,⁴ Sandrine Puverel,¹ Liana Nikolaenko,¹ Robert Chen,¹ Shari Daniels,¹ Neena Kennedy,¹ Lacolle Peters,¹ Steven T. Rosen,¹ Stephen J. Forman,¹ Leslie L. Popplewell,¹ Larry W. Kwak¹ and Alex F. Herrera¹

¹Department of Hematology & Hematopoietic Cell Transplantation; ²Department of Information Sciences; ³Department of Pathology and ⁴Department of Pediatrics, City of Hope Medical Center, City of Hope, Duarte, CA, USA

Correspondence: A. F. Herrera
aherrera@coh.org

Received: March 3, 2023.

Accepted: July 7, 2023.

Early view: July 20, 2023.

<https://doi.org/10.3324/haematol.2023.283002>

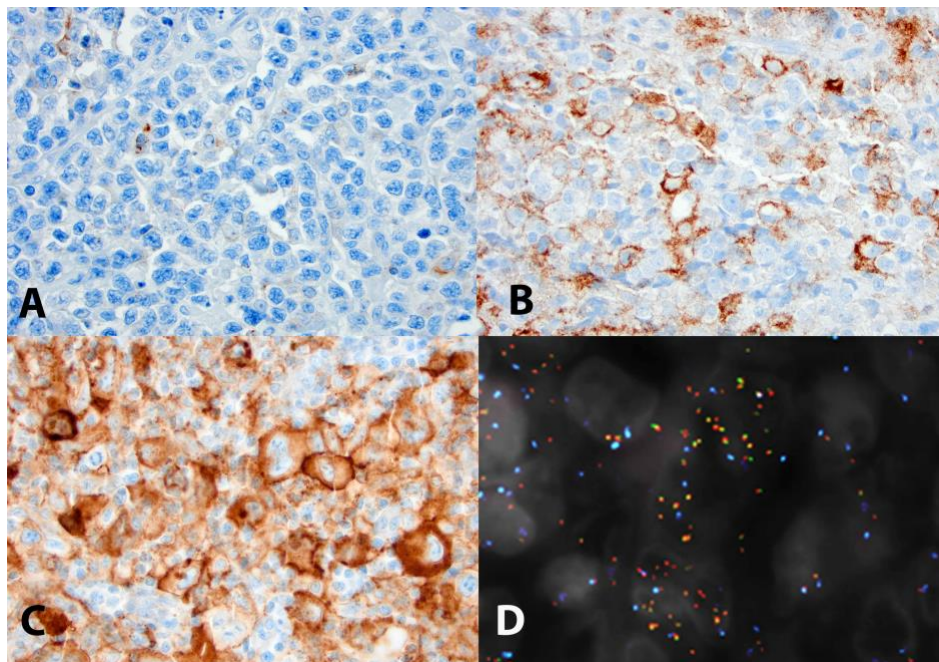
©2024 Ferrata Storti Foundation

Published under a CC BY-NC license



Supplemental Table 1. PD-L1 expression, *PD-L1* FISH, and EBV status of DLBCL patients

Disease Histology	PD-L1 H score (pathology)	PD-L1 H score (qupath)	<i>PD-L1</i> FISH	EBV	Response
PMBL	270	174	Amplified	Negative	CR
PMBL	270	170	Amplified	N/A	CR
PMBL	40	14	Amplified	Negative	CR
DLBCL, non-GCB	3	0.61	Disomy	N/A	CR
DLBCL, non-GCB	10	4.99	Polysomy	Positive	PR
DLBCL, non-GCB	45	35.58	Polysomy	Negative	PD
DLBCL, non-GCB	45	26.8	Disomy	Negative	PD
DLBCL, non-GCB	5	0.68	Disomy	N/A	PD



Supplemental Figure 1. Representative PD-L1 IHC and *PD-L1* FISH. (A) A representative DLBCL case showing no expression of PD-L1 by IHC. This case also showed no amplifications of the *CD274* (PD-L1) or *PDCD1LG2* (PD-L2) loci by FISH analysis. (B) A case of PMBL with variable expression with PD-L1 IHC. This case had amplification of *CD274* and the patient achieved a CR to treatment. (C) Another PMBL case with high PD-L1 expression by IHC that also showed amplification of the *CD274* (red signal) and *PDCD1LG2* (green signal) loci by FISH. This patient also achieved a CR.