

Diffuse large B-cell lymphoma involving osseous sites: utility of response assessment by PET/CT and good long-term outcomes

Paola Ghione,^{1,2} Salma Ahsanuddin,¹ Efrat Luttwak,¹ Sabela Bobillo Varela,¹ Reiko Nakajima,¹ Laure Michaud,¹ Kanika Gupta,¹ Anastasia Navitski,¹ David Straus,^{1,2} M. Lia Palomba,^{1,2} Alison Moskowitz,^{1,2} Ariela Noy,^{1,2} Paul Hamlin,^{1,2} Matthew Matasar,^{1,2} Anita Kumar,^{1,2} Lorenzo Falchi,^{1,2} Joachim Yahalom,^{1,3} Steven Horwitz,^{1,2} Andrew Zelenetz,^{1,2} Anas Younes,¹ Gilles Salles,^{1,2} Heiko Schöder^{2,4} and Erel Joffe^{1,5}

¹Lymphoma Service, Memorial Sloan Kettering Cancer Center, New York, NY, USA; ²Weill Cornell College of Medicine, New York, NY, USA; ³Molecular Imaging and Therapy Service, Memorial Sloan Kettering Cancer Center, New York, NY, USA; ⁴Radiation Therapy, Memorial Sloan Kettering Cancer Center, New York, NY, USA; ⁵Sackler School of Medicine, Tel Aviv University, Tel Aviv, Israel

Correspondence: P. Ghione
ghionep@mskcc.org

E. Joffe
erelj@tlvmc.gov.il

Received: December 27, 2022.

Accepted: August 22, 2023.

Early view: August 31, 2023.

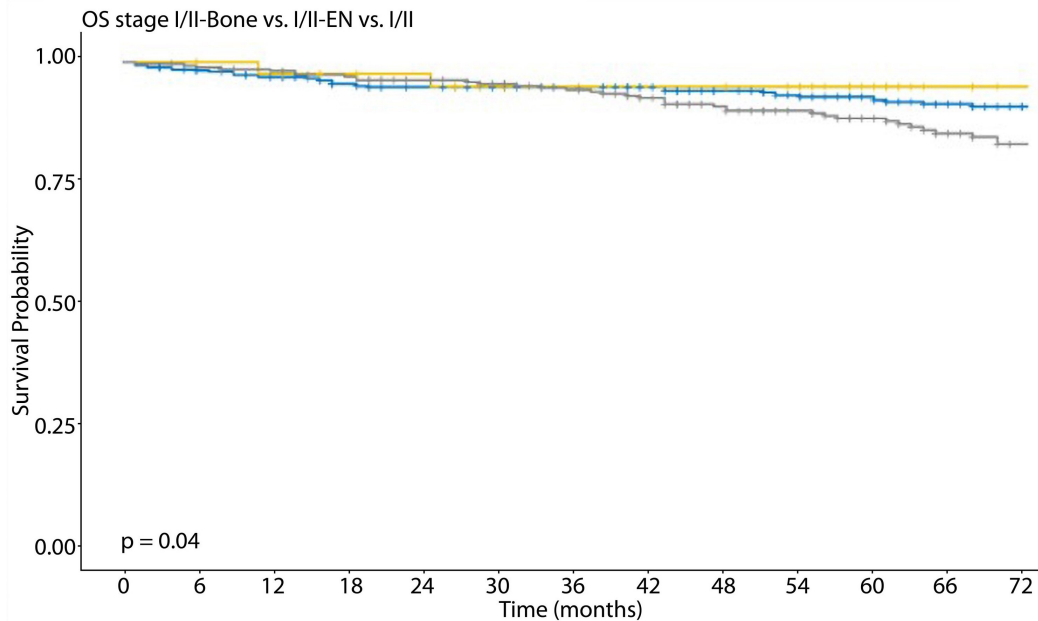
<https://doi.org/10.3324/haematol.2022.282643>

©2024 Ferrata Storti Foundation

Published under a CC BY-NC license

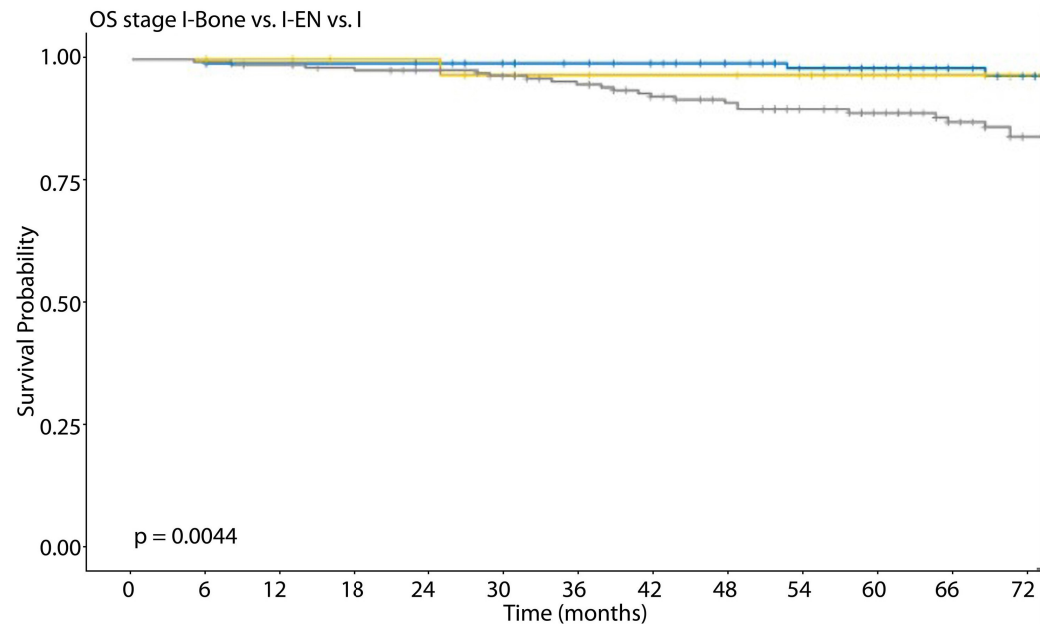


Figure S1 – Overall survival of limited stage DLBCL



+	453	444	433	417	409	401	387	372	339	304	272	196	170
+	42	42	40	38	37	34	33	31	31	30	22	15	013
+	271	268	264	258	248	241	232	219	203	182	159	125	111

+ Stage I/II + Stage I/II - Bone + Stage I/II - EN



+	126	126	123	123	122	120	114	110	105	095	083	063	058
+	034	034	033	031	031	029	028	027	027	026	020	013	011
+	182	181	179	176	171	165	159	147	139	125	109	093	081

+ Stage I + Stage I - Bone + Stage I - EN