

Prognostic value of early positron emission tomography in patients with large B-cell lymphoma treated with anti-CD19 chimeric antigen receptor T-cell therapy

Jennifer L. Crombie,^{1*} Caron A. Jacobson,^{1*} Robert Redd,¹ Geoffrey Shouse,² Alex F. Herrera,² Victor A. Chow,^{3,4} Jordan Gauthier,^{3,4} Erin Mullane,^{3,4} Kirk Cahill,⁵ Justin Kline,⁵ Jason Romancik,⁶ Jonathon B. Cohen,⁶ Anna Saucier,¹ Roch Houot,⁷ Philippe Armand¹ and Brian Hess⁸

¹Dana-Farber Cancer Institute, Boston, MA, USA; ²City of Hope National Medical Center, Duarte, CA, USA; ³Fred Hutchinson Cancer Research Center, Seattle, WA, USA; ⁴University of Washington, Seattle, WA, USA; ⁵University of Chicago, Chicago, IL, USA; ⁶Emory University, Atlanta, GA, USA; ⁷University Hospital of Rennes, Rennes, France and ⁸Hollings Cancer Center, Medical University of South Carolina, Charleston, SC, USA

**JLC and CAJ contributed equally as first authors*

Correspondence:

JENNIFER CROMBIE - Jennifer_Crombie@dfci.harvard.edu

<https://doi.org/10.3324/haematol.2022.282345>

Supplemental Figures:

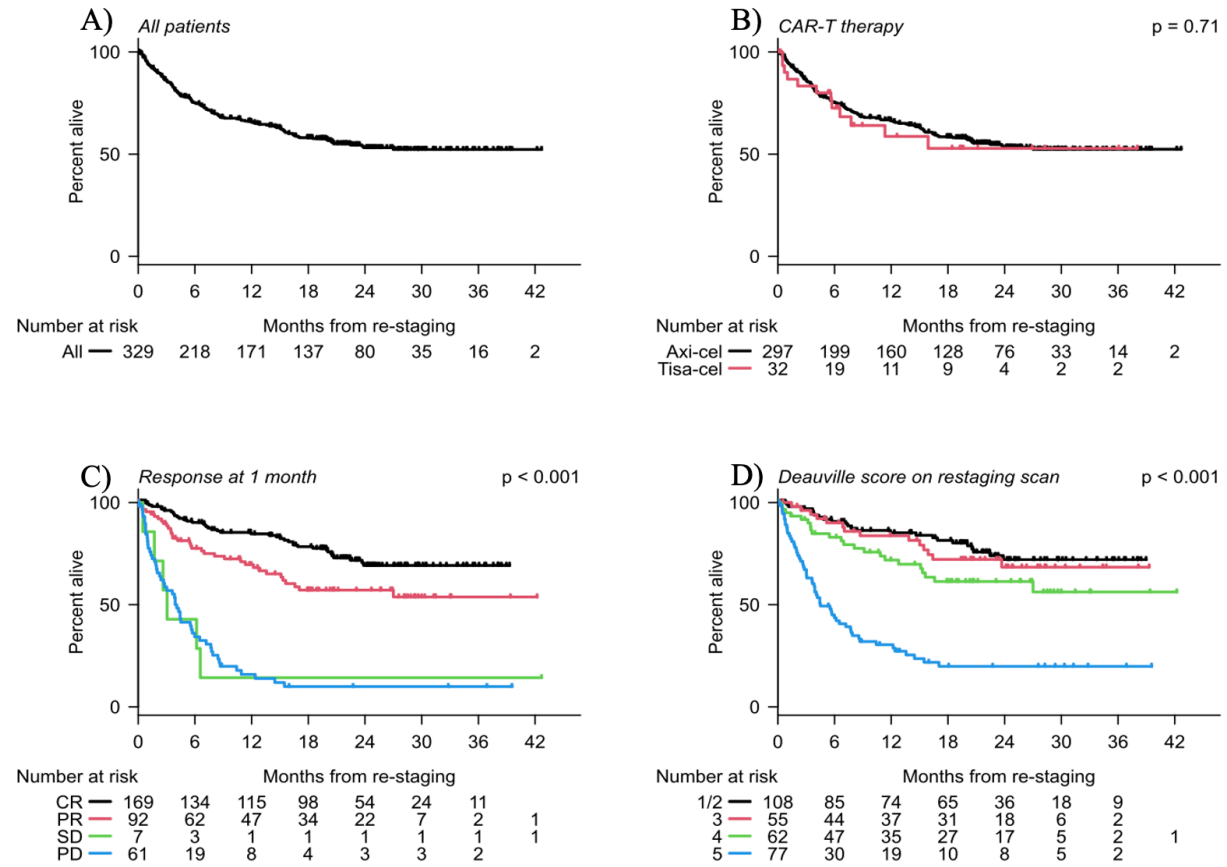
Supplemental Figure 1: OS following CAR T-cell therapy

A) OS among entire cohort B) OS among patients who received axi-cel versus tisa-cel C) OS among patients with a CMR versus PMR/SD at 1 month D) OS among patients with Deauville 1/2, 3, 4, and 5.

Supplemental Figure 2: Predictors of relapse following CAR T-cell therapy

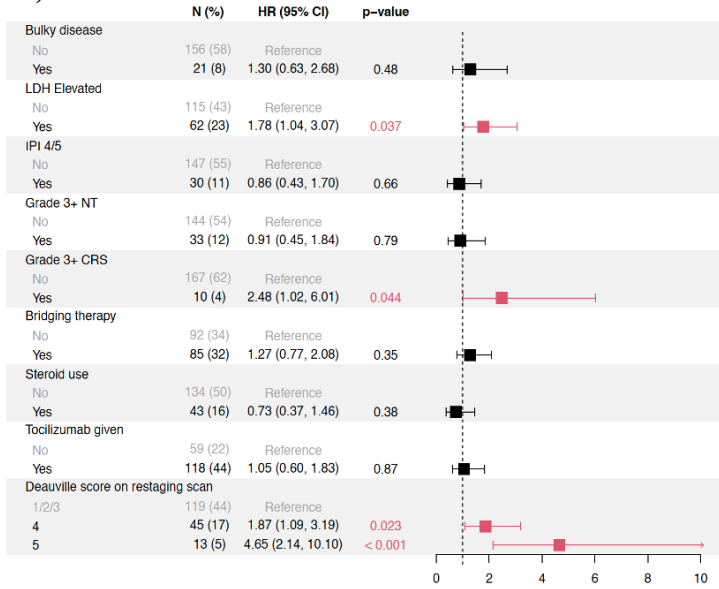
A) Forest plot demonstrating univariate predictors of relapse among initial responders B) Forest plot demonstrating multivariate predictors of relapse among patients with a DS 4 or less.

Supplemental Figure 1:



Supplemental Figure 2:

A)



B)

