

International multicenter retrospective analysis of thiotepa-based autologous stem cell transplantation for secondary central nervous system lymphoma

Jahanzaib Khwaja,¹ Amy A. Kirkwood,² Lisa K. Isbell,³ Sara Steffanoni,⁴ Harshita Goradia,⁵ Lisa Pospiech,⁶ Thomas Fail,⁷ Emma Nicholson,⁸ Kate Fletcher,⁹ Kim M. Linton,¹⁰ Katrina E. Parsons,¹¹ Nagah Elmusharaf,¹² Lydia Eccersley,¹³ Toby A. Eyre,¹⁴ Sridhar Chaganti,¹⁵ Jeffrey Smith,¹⁶ Nisha Thakrar,¹ Alexandra Kutilina,³ Teresa Calimeri,⁴ Nicolas Martinez-Calle,⁵ Dima El-Sharkawi,⁸ Wendy Osborne,⁷ Gerald Illerhaus,⁶ Christopher P. Fox,⁵ Andrés J.M. Ferreri,⁴ Elisabeth Schorb³ and Kate Cwynarski¹

¹University College London Hospitals, London, UK; ²Cancer Research UK & UCL Cancer Trials Centre, UCL Cancer Institute, University College London, London, UK; ³University Medical Center Freiburg, Freiburg, Germany; ⁴IRCCS San Raffaele Scientific Institute, Milan, Italy; ⁵Nottingham University Hospitals NHS Trust, Nottingham, UK; ⁶Klinikum Stuttgart, Stuttgart, Germany; ⁷Freeman Hospital, Newcastle, UK; ⁸Royal Marsden Hospital, London, UK; ⁹King's College Hospital, London, UK; ¹⁰The Christie Hospital, Manchester, UK; ¹¹Beatson West of Scotland Cancer Centre, Glasgow, UK; ¹²University Hospital of Wales, Cardiff, UK; ¹³St Bartholomew's Hospital, London, UK; ¹⁴Oxford University Hospitals NHS Foundation Trust, Oxford, UK; ¹⁵Queen Elizabeth Hospital, Birmingham, UK and ¹⁶Aintree University Hospitals NHS Foundation Trust, Liverpool, UK

Correspondence:

K. CWYNARSKI - kate.cwynarski@nhs.net

<https://doi.org/10.3324/haematol.2022.281640>

Supplemental table 1. Risk factors for time to CNS and systemic relapse post-ASCT

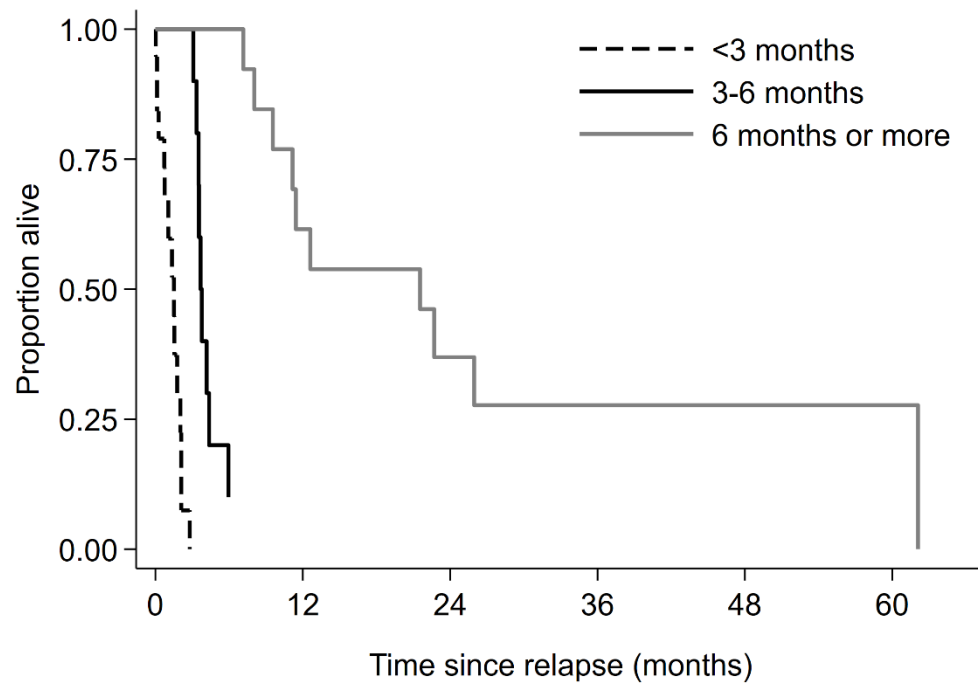
Risk factor	Events/N	Time to CNS relapse		Time to systemic relapse		
		HR (95% CI)	p-value	Events/N	HR (95% CI)	p-value
Presentation[§]						
<i>De novo</i>	11/52	1.00	0.64	3/52	1.00	<0.0001
Relapsed: isolated	16/62	1.14 (0.53 – 2.45)		1/62	0.26 (0.03 – 2.53)	
Relapsed: synchronous	3/20	0.63 (0.18 – 2.28)		12/20	14.36 (4.03 – 51.15)	
Timing of relapse (relapsed only)						
>1 year	7/35	1.00	0.10*	4/35	1.00	0.19*
3 months-1 year	4/20	0.92 (0.27 – 3.15)		3/20	1.34 (0.30 – 6.00)	
< 3 months	4/16	1.24 (0.36 – 4.24)		3/16	1.70 (0.38 – 7.61)	
On therapy	4/11	2.13 (0.62 – 7.29)		3/11	2.71 (0.60 – 12.15)	
Age at ASCT (for an increase of 10 years)	30/134	1.11 (0.84 – 1.48)	0.45	16/118	1.24 (0.81 – 1.89)	0.32
ECOG at ASCT						
0-1	23/106	1.00	0.57	12/106	1.00	0.85
2-3	6/24	1.30 (0.53 – 3.19)		3/24	1.13 (0.32 – 4.00)	
Time to ASCT, for an increase of 1 month	30/134	1.02 (0.94 – 1.11)	0.67			
Number of lines of SCNSL therapy pre ASCT						
1	24/121	1.00	0.016	15/121	1.00	0.66
2	6/9	3.03 (1.23 – 7.43)		1/13	0.64 (0.08 – 4.84)	
Response pre ASCT						
Systemic (PET-CT/CT) response						
CR	21/77	1.00	0.41	8/77	1.00	0.15
PR	2/13	0.55 (0.13 – 2.33)		3/13	2.54 (0.67 – 9.58)	
CNS (MRI) response						

Risk factor	Time to CNS relapse			Time to systemic relapse		
	Events/N	HR (95% CI)	p-value	Events/N	HR (95% CI)	p-value
CR	19/83	1.00	0.41	8/83	1.00	0.82
PR	6/37	0.68 (0.27 – 1.71)		4/37	1.15 (0.34 – 3.80)	
Combined response						
Both CR	15/67	1.00		3/67	1.00	
PR	8/41	0.88 (0.37 – 2.08)	0.77	6/41	3.56 (0.89 – 14.22)	0.055
Non-CR (PR/SD/PD in either MRI or PET)	12/50	1.15 (0.54 – 2.45)	0.72	7/50	3.46 (0.89 – 13.38)	0.056

[§]Systemic vs de novo/isolated: HR (CNS) 0.59 (0.18 – 1.94) $p=0.38$, HR (systemic): 18.2 (11.3 – 29.3), $p<0.001$ *Log-rank test for trend. Time to CNS relapse is calculated from the date of ASCT until CNS relapse, patients who have systemic only relapse or die in remission are counted as competing risks. Time to systemic relapse includes only systemic relapse as an event with CNS alone relapse treated as a competing risk.

Supplemental figure 1. Overall survival in those that relapsed post-ASCT

There is a significant difference by time to relapse $p < 0.0001$



	Time since relapse (months)					
Number at risk	0	12	24	36	48	60
<3 months	20	0	0	0	0	0
3-6 months	10	0	0	0	0	0
6 months or more	13	8	4	2	1	1