

# Minnesota acute graft-versus-host disease risk score predicts survival at onset of graft-versus-host disease after post-transplant cyclophosphamide prophylaxis

Federica Ardizzoia<sup>1-2\*</sup> Francesca Lorentino,<sup>1-3\*</sup> Alessandro Bruno,<sup>1</sup> Sarah Markt,<sup>1</sup> Fabio Giglio,<sup>1</sup> Daniela Clerici,<sup>1</sup> Francesca Farina,<sup>1</sup> Sara Mastaglio,<sup>1</sup> Simona Piemontese,<sup>1</sup> Andrea A. Assanelli,<sup>1</sup> Matteo G. Carrabba,<sup>1</sup> Massimo Bernardi,<sup>1</sup> Consuelo Corti,<sup>1</sup> Jacopo Peccatori,<sup>1</sup> Fabio Ciceri,<sup>1-2</sup> Raffaella Greco<sup>1</sup> and Maria Teresa Lupo-Stanghellini<sup>1</sup>

<sup>1</sup>Hematology and Bone Marrow Transplantation Unit, IRCCS San Raffaele Scientific Institute; <sup>2</sup>Vita-Salute, San Raffaele University and

<sup>3</sup>Department of Medicine and Surgery, PhD Program in Public Health, University of Milano-Bicocca, Milano, Italy

*\*FA and FL contributed equally as co-first authors.*

*°Current address: Alma Mater Studiorum – University of Bologna, Istituto di Ematologia e Oncologia Medica “L. e A. Seragnoli” IRCCS Azienda Ospedaliero-Universitaria di Bologna Policlinico Sant’Orsola, Bologna, Italy*

Correspondence:

M.T. LUPO-STANGHELLINI - [lupostanghellini.mariateresa@hsr.it](mailto:lupostanghellini.mariateresa@hsr.it)

<https://doi.org/10.3324/haematol.2022.281269>

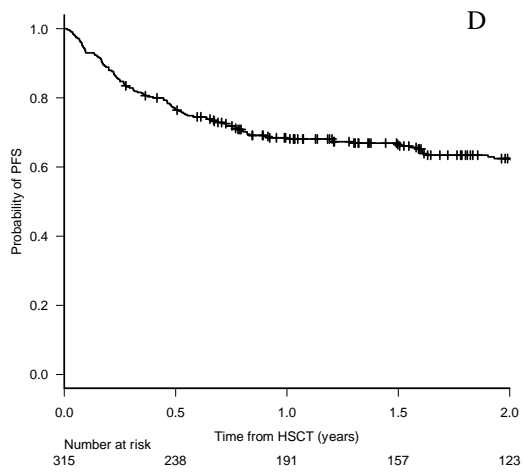
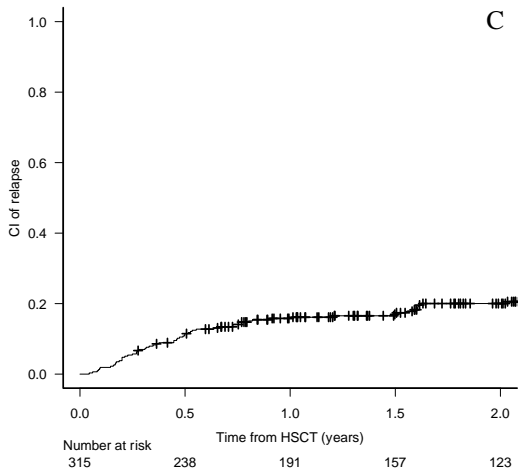
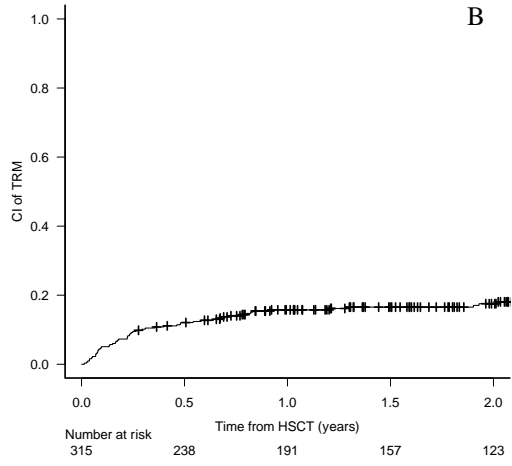
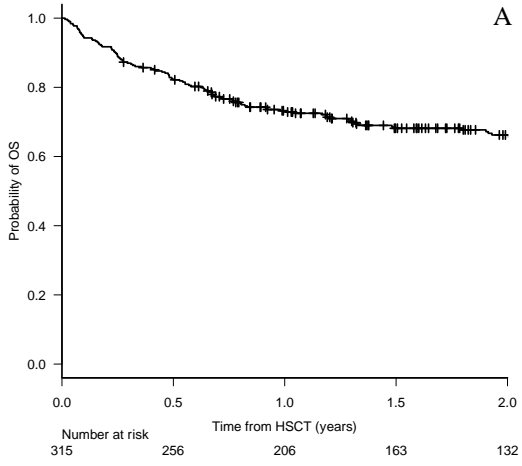
## Supplementary data

**Supplementary Table 1** - Multivariate analysis of the association between host/donor characteristics and acute GvHD.

Factors influencing acute GvHD onset	Acute GvHD II-IV		Acute GvHD III-IV	
	HR (95% CI)	p value	HR (95% CI)	p value
<b>Donor source</b>		0.01		0.003
MRD vs MMRD	0.27 (0.13-0.57)	0.001	0.163 (0.05-0.55)	0.003
MUD vs MMRD	0.54 (0.30-0.99)	0.047	0.45 (0.21-0.96)	0.039
<b>Donor age, median 35 y</b>				
>35y </= 35y	2.75 (1.59-4.76)	<0.001		n.s.

**Legend:** HR hazard ratio, CI confidence interval, MMRD mismatch related donor, MRD match related donor, MUD match unrelated donor, y years

**Supplementary Figure 1** - Cumulative incidence of Overall Survival (A), TRM (B), relapse (C) and PFS (D) in the entire population under study.



**Supplementary Figure 2** - Cumulative incidence of acute GvHD grade II-IV (A) and grade III-IV (B), chronic GvHD (C) and moderate-severe chronic GvHD (D) in the entire population under study.

