

Patients with hypercortisolemic Cushing disease possess a distinct class of hematopoietic progenitor cells leading to erythrocytosis

Lilian Varricchio,^{1*} Eliza B. Geer,^{2*} Fabrizio Martelli,³ Maria Mazzarini,^{4,5}
Alister Funnell,⁵ James J. Bieker,⁶ Thalia Papayannopoulou^{7#} and Anna Rita Migliaccio^{5,8#}

¹Division of Hematology and Oncology, Tisch Cancer Institute, Icahn School of Medicine at Mount Sinai, New York, NY, USA; ²Multidisciplinary Pituitary and Skull Base Tumor Center, Departments of Medicine and Neurosurgery, Memorial Sloan Kettering Cancer Center, New York, NY, USA; ³National Center for Drug Research and Evaluation, Istituto Superiore di Sanità, Rome, Italy; ⁴Department of Biomedical and Neuromotorial Sciences, Alma Mater Studiorum University, Bologna, Italy; ⁵Altius Institute for Biomedical Sciences, Seattle, WA, USA; ⁶Department of Cell, Developmental, and Regenerative Biology, Icahn School of Medicine at Mount Sinai, New York, NY, USA; ⁷Division of Hematology, Department of Medicine, University of Washington, Seattle, WA, USA and ⁸Center for Integrated Biomedical Research, Campus Bio-medico, Rome, Italy.

*LV and EBG contributed equally as co-first authors.

#TP and ARM contributed equally as co-senior authors.

Correspondence: A.R. Migliaccio
a.migliaccio@unicampus.it

T. Papayannopoulou
thalp@uw.edu

Received: January 3, 2022.

Accepted: May 11, 2022.

Early view: July 21, 2022.

<https://doi.org/10.3324/haematol.2021.280542>

©2023 Ferrata Storti Foundation

Published under a CC BY-NC license



SUPPLEMENTAL FILES

Supplementary Figures

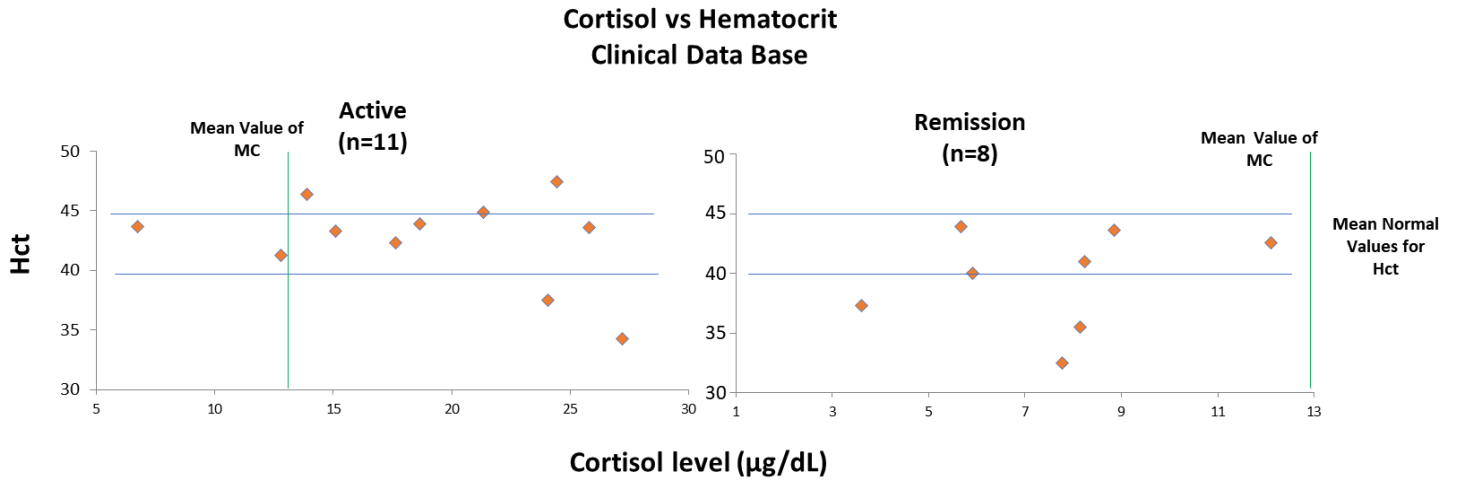


Figure S1: Comparison of Hct versus serum cortisol levels in erythroid cells from Active (on the left) and Remission (on the right) patients. Similar data were obtained using 24-hour urine cortisol concentrations (data not shown).

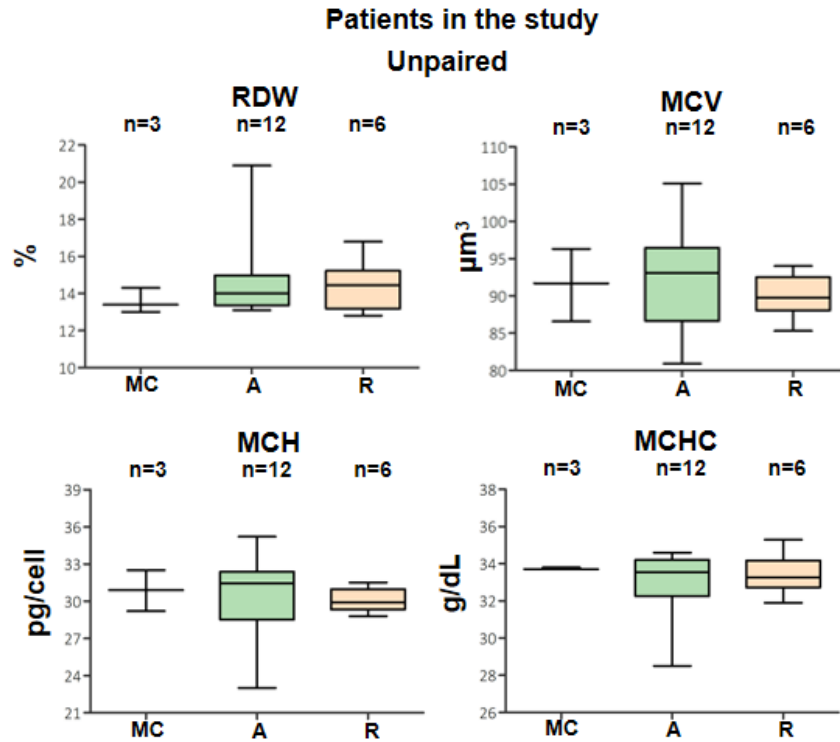


Figure S2: Red blood cell parameters from Active (A), Remission (R) patients and MC (Matched Controls). RDW (Red Blood Cell Distribution Width), MCV (Mean corpuscular Volume), MCH (Mean Corpuscular Hemoglobin), MCHC (Mean Corpuscular Hemoglobin Concentration). The number of patients included in each analysis is indicated by n. and p values were calculated by Tukey's multiple comparisons test and were all above 0.05.

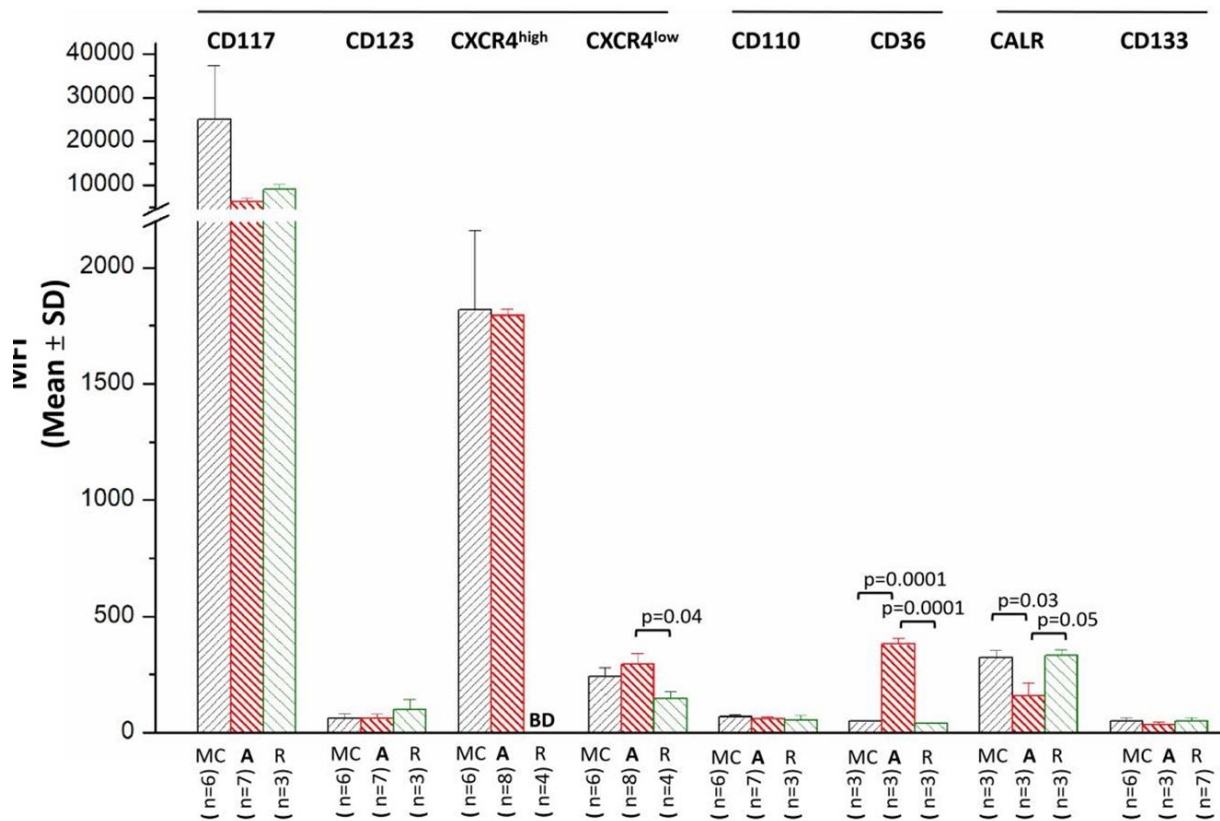


Figure S3: Mean Fluorescence Intensity (MFI) of CD117, CD123, CXR4 (high and low) CD110, CD36, CALR and CD133 expressed by CD34+ cells from MC, A and R patients, as indicated. The number of patients included in each analysis is indicated by n. and p values were calculated by Tukey's multiple comparisons test. Statistically significant values are indicated within the panel. BD=Below Detection.

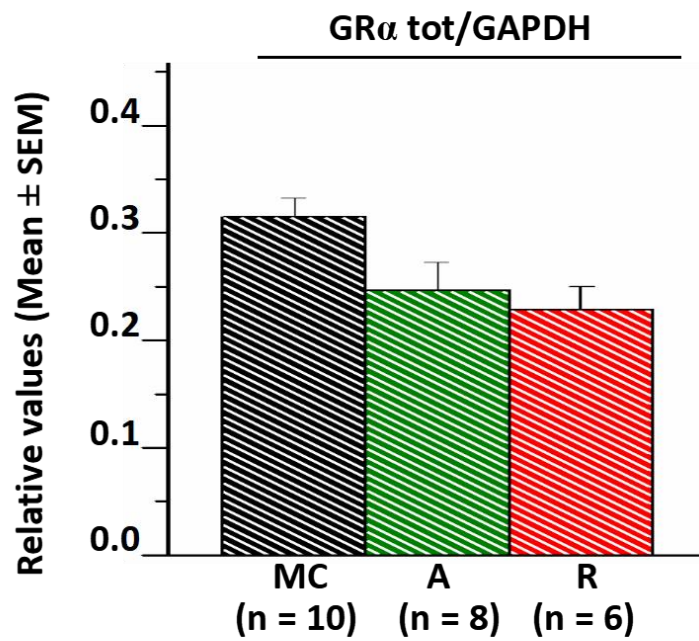


Figure S4: Content of total GR α with respect to that of GAPDH in Erys generated from MC and R and A patients with Dex. The GR α content of MC are the same than those in **Figure 6B** plus values from 4 additional healthy controls previously published in Varricchio et al, Blood (2011) (doi: 10.1182/blood-2010-07-296921). The GR α of A are the same than in **Figure 6B** plus 3 additional patients not shown. The GR α values for R patients are the same than in **Figure 6B**. The values among groups are not statistically significant by Tukey's multiple comparisons test.

