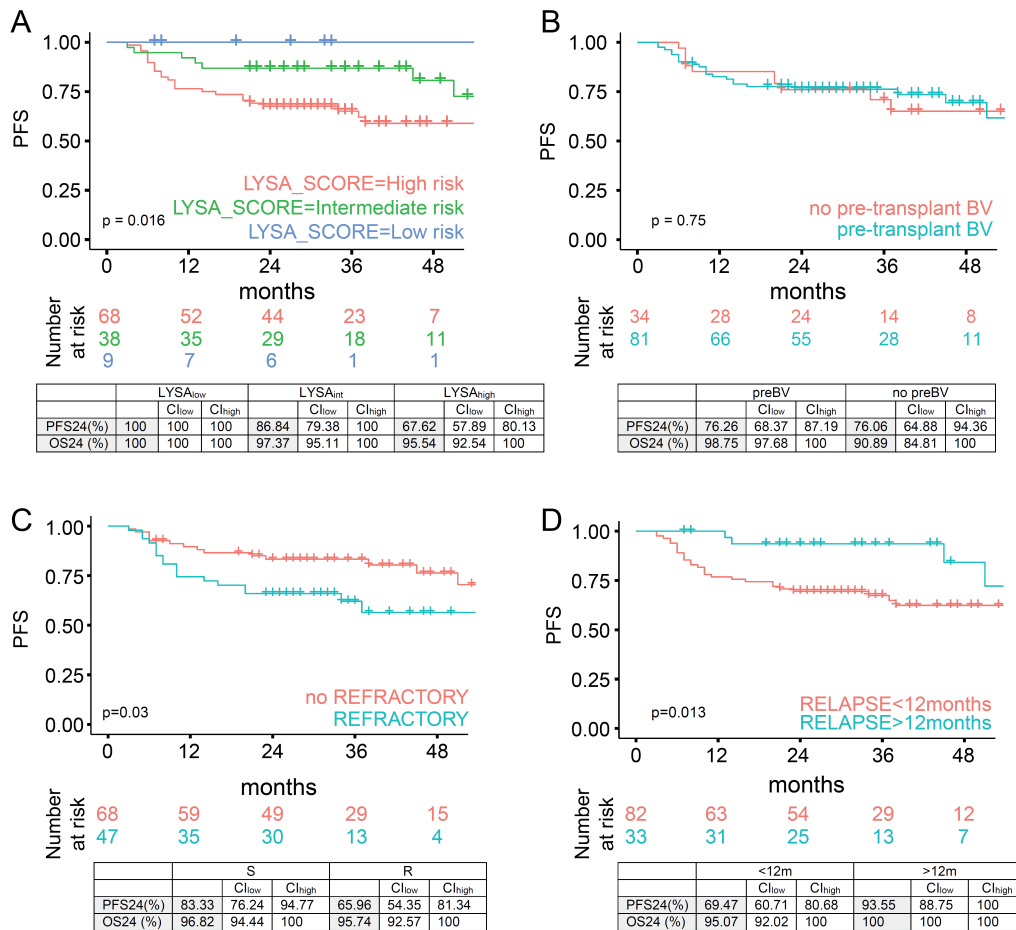


Outcomes of refractory or relapsed Hodgkin lymphoma patients with post-autologous stem cell transplantation brentuximab vedotin maintenance: a French multicenter observational cohort study

Amira Marouf,^{1,2,3} Anne Segolene Cottereau,^{2,4} Salim Kanoun,⁵ Paul Deschamps,^{1,2} Michel Meignan,^{6,7} Patricia Franchi,^{1,2} David Sibon,⁸ Clara Antoine,⁶ Thomas Gastinne,⁹ Cecile Borel,¹⁰ Mohammad Hammoud,¹¹ Guillaume Sicard,¹² Romane Gille,¹³ Doriane Cavalieri,¹⁴ Aspasia Stamatoullas,¹⁵ Lauriane Filliatre-Clement,¹⁶ Julien Lazarovici,¹⁷ Adrien Chauchet,¹⁸ Luc-Matthieu Fornecker,^{19,20,21} Sandy Amorin,²² Mathieu Rocquet,¹ Nicole Raus,^{23,24} Barbara Burroni,^{25,26} Marie Therese Rubio,^{24,27,28} Didier Bouscary,^{1,2,29} Philippe Quittet,³⁰ Rene Olivier Casasnovas,^{31,32} Pauline Brice,³³ Herve Ghesquieres,³⁴ Jérôme Tamburini^{1,2,29,35} and Benedicte Deau^{1,2} on behalf of the SFGM-TC and LYSA groups.

¹Department of Hematology, Hôpital Cochin, Assistance Publique - Hôpitaux de Paris (AP-HP), Paris, France; ²Université de Paris, Paris, France; ³INSERM UMR 1163, Institut Imagine, Paris, France; ⁴Department of Nuclear Medicine, Hôpital Cochin, Assistance Publique-Hôpitaux de Paris (AP-HP), Paris, France; ⁵Cancer Research Center of Toulouse (CRCT), Team 9, INSERM UMR 1037, Toulouse, France; ⁶Lymphoma Academic Research Organization (LYSARC) Lymphoma Study Association Imaging, Hôpital Henri Mondor, Créteil, France; ⁷Paris Est University, Créteil, France; ⁸Hematology Department and INSERM U1151, Institut Necker Enfants Malades, Necker University Hospital, AP-HP, Paris, France; ⁹Department of Hematology, Nantes University Hospital, Nantes, France; ¹⁰Department of Hematology, Institut Universitaire du Cancer Toulouse- Oncopole, Toulouse, France; ¹¹Lymphoid Malignancies Unit, Hôpital Henri Mondor, Créteil, France; ¹²Department of Hematology, Aix-Marseille University, Marseille, France; ¹³Department of Medical Oncology, Centre Léon Bérard, Lyon, France; ¹⁴Department of Hematology, Centre Hospitalier Universitaire (CHU) Estaing, Clermont-Ferrand, France; ¹⁵Department of Hematology, Centre Henri Becquerel, Rouen, France; ¹⁶Department of Hematology, Clinique Louis Pasteur, Nancy, France; ¹⁷Department of Hematology, Institut Gustave-Roussy, Villejuif, France; ¹⁸Department of Hematology, CHU Besançon, Besançon, France; ¹⁹Strasbourg University Hospital, Strasbourg, France; ²⁰INSERM S-1113, Strasbourg, France; ²¹Strasbourg University, Faculty of Medicine, Strasbourg, France; ²²Department of Hematology, Hôpital Saint Vincent de Paul, Lille, France; ²³Department of Hematology, Hôpital Lyon Sud, Pierre-Bénite, France; ²⁴Société Francophone de Greffe de Moelle et de Thérapie Cellulaire, France; ²⁵Service de pathologie, Hôpital Cochin, AP-HP, Paris, France; ²⁶Centre de recherche des Cordeliers, Sorbonne University, INSERM, Paris University, Paris, France; ²⁷Department of Hematology, CHRU Nancy, Hôpital Brabois, Nancy, France; ²⁸CNRS UMR 7365, Équipe 6, Biopôle de L'Université de Lorraine, Vandœuvre-les-Nancy, France; ²⁹Institut Cochin, INSERM U1016, Paris, France; ³⁰Department of Hematology, University of Montpellier, Montpellier, France; ³¹Department of Hematology, Dijon University Hospital, Dijon, France; ³²INSERM UMR 1231 CHU Dijon, Dijon, France; ³³Department of Hematology, CHU Paris-GH St-Louis Lariboisière F-Widal - Hôpital Saint-Louis, Paris, France; ³⁴Department of Hematology, Centre Hospitalier Lyon Sud, Pierre-Bénite, France and ³⁵Translational Research Center in Onco-hematology, Faculty of Medicine, University of Geneva, Geneva 4, Switzerland.

Correspondence: BENEDICTE DEAU: benedicte.deau-fischer@aphp.fr
<https://doi.org/10.3324/haematol.2021.279564>



Supplemental Figure 1. PFS dependent on variables analyzed by the Kaplan-Meier estimate among 115 R/R HL patients. A. PFS (upper panel) and 24 month PFS and OS probability (lower panel, PFS24 and OS24, respectively) dependent on the LYSA score (high, intermediate or low). **B.** PFS (upper), and PFS24 and OS24 (lower) dependent on pre-transplant BV use. **C.** PFS (upper), and PFS24 and OS24 (lower) in patients with disease refractory (R) or not (S) to the first line of therapy. **D.** PFS (upper), and PFS24 and OS24 (lower) dependent on the timing of HL relapse before or after 12 month (<12m and >12m, respectively) from first line therapy completion. p-values are indicated.