

Autologous stem-cell transplantation as consolidation of first-line chemotherapy in patients with peripheral T-cell lymphoma: a multicenter GELTAMO/FIL study

Alejandro Martín García-Sancho,¹ Monica Bellei,² Miriam López-Parra,¹ Giuseppe Gritti,³ María Cortés,⁴ Silvana Novelli,⁵ Carlos Panizo,⁶ Luigi Petrucci,⁷ Antonio Gutiérrez,⁸ Ivan Dlouhy,⁹ Mariana Bastos-Oreiro,¹⁰ Juan M. Sancho,¹¹ María J. Ramírez,¹² José M. Moraleda,¹³ Estrella Carrillo,¹⁴ Ana I. Jiménez-Ubieto,¹⁵ Isidro Jarque,¹⁶ Lorella Orsucci,¹⁷ Estefanía García-Torres,¹⁸ Carlos Montalbán,¹⁹ Anna Dodero,²⁰ Reyes Arranz,²¹ Natalia de las Heras,²² María J. Pascual,²³ Javier López-Jiménez,²⁴ Michelle Spina,²⁵ Alessandro Re,²⁶ Sonia González de Villambrosia,²⁷ Sabela Bobillo,²⁸ Massimo Federico²⁹ and Dolores Caballero¹ on behalf of the Grupo Español de Linfomas y Trasplante Autólogo de Médula Ósea (GELTAMO) and Fondazione Italiana Linfomi (FIL)

¹Department of Hematology, Hospital Universitario de Salamanca, IBSAL, CIBERONC, Salamanca, Spain; ²Fondazione Italiana Linfomi (FIL) Onlus, Modena, Italy; ³Hematology and Bone Marrow Transplant Unit, ASST Papa Giovanni XXIII, Bergamo, Italy; ⁴Department of Statistics, Hospital Universitario de Salamanca / IBSAL, Salamanca, Spain; ⁵Hematology Department, Hospital de la Santa Creu i Sant Pau, José Carreras Leukemia Research Institute and IIB Sant Pau, Barcelona, Spain; ⁶Department of Hematology, Clínica Universidad de Navarra, IdiSNA, Pamplona, Spain; ⁷Department of Translational and Precision Medicine, Sapienza University, Rome, Italy; ⁸Department of Hematology, Son Espases University Hospital, IdISBa, Palma de Mallorca, Spain; ⁹Department of Hematology, Hospital Clínic de Barcelona, Barcelona, Spain; ¹⁰Hematology Department, Hospital Gregorio Marañón / IISGM, Madrid, Spain; ¹¹Hematology Department, ICO-IJC-Hospital Germans Trias i Pujol, Badalona, Spain; ¹²Hematology Department, Hospital de Especialidades de Jerez de la Frontera, Cádiz, Spain; ¹³Hematology Department, Hospital Clínico Universitario Virgen de la Arrixaca, Murcia, Spain; ¹⁴Hematology Department, Hospital Universitario Virgen del Rocío, Seville, Spain; ¹⁵Hematology Department, Hospital Universitario 12 de Octubre, Madrid, Spain; ¹⁶Hematology Department, CIBERONC, Instituto Carlos III, Hospital Universitario y Politécnico La Fe, Valencia, Spain; ¹⁷Hematology, Azienda Ospedaliero-Universitaria Città della Salute e della Scienza, Multidisciplinary Outpatient Oncology Clinic, Candiolo Cancer Institute, FPO-IRCCS, Candiolo (Torino), Italy; ¹⁸Hematology Department, Hospital Universitario Reina Sofía, Cordoba, Spain; ¹⁹Department of Translational Research, MD Anderson Cancer Center, Madrid, Spain; ²⁰Division of Hematology and Bone Marrow Transplantation, Fondazione IRCCS Istituto Nazionale dei Tumori, Milano, Italy; ²¹Hematology Department, Hospital La Princesa, Madrid, Spain; ²²Department of Hematology, Complejo Hospitalario de León, León, Spain; ²³Hematology Department, Regional Hospital, Málaga, Spain; ²⁴Hematology Department, Hospital Universitario Ramón y Cajal, Madrid, Spain; ²⁵Division of Medical Oncology and Immune-related Tumors, Centro di Riferimento Oncologico di Aviano (CRO) IRCCS, Aviano, Italy; ²⁶Division of Hematology, ASST Spedali Civili di Brescia, Brescia, Italy; ²⁷Hematology Department, Hospital Universitario Marqués de Valdecilla, Santander, Spain; ²⁸Department of Hematology, University Hospital Vall d'Hebron and Universitat Autònoma de Barcelona, Barcelona, Spain and ²⁹Medical Oncology, CHIMOMO Department, University of Modena and Reggio Emilia, Modena, Italy.

Correspondence: A. M. García-Sancho
amartingar@usal.es

Received: July 21, 2021.

Accepted: January 28, 2022.

Prepublished: March 24, 2022.

<https://doi.org/10.3324/haematol.2021.279426>

©2022 Ferrata Storti Foundation

Published under a CC BY-NC license



Supplemental Table 1. Univariate analysis of overall survival by subgroups

Characteristic	ASCT group		Non-ASCT group		p
	N	5-year OS (%)	N	5-year OS (%)	
Sex					
Male	62	76	42	59	0.099
Female	41	67	29	71	0.705
Histological diagnosis					
PTCL, NOS	41	73	26	56	0.431
AITL	31	70	17	57	0.324
ALCL, ALK-negative	19	88	19	74	0.186
Others	12	62	9	66	0.809
Age					
≤60 years	91	73	52	61	0.187
>60 years	12	81	19	67	0.309
ECOG-PS					
0-1	82	74	62	64	0.249
2-4	20	74	7	57	0.251
LDH					
Normal	44	69	42	66	0.434
Increased	54	70	22	58	0.123
Ann-Arbor stage					
I-II	16	94	35	74	0.315
III-IV	86	70	36	50	0.028
Extranodal sites					
0-1	83	75	59	67	0.272
≥2	20	69	12	40	0.099
BM infiltration					
Yes	33	63	15	60	0.307
No	69	79	55	64	0.254
B symptoms					
Yes	51	71	28	51	0.057
No	52	76	39	69	0.649
IPI					
0-1	40	59	39	72	0.586
2-3	48	71	22	67	0.234
4-5	10	67	6	33	0.315
PIT					
0-1	66	78	53	63	0.207
2	25	61	7	86	0.695
3-4	11	79	7	43	0.114
First-line treatment					
CHOP-like	68	76	58	62	0.072
Others	35	69	13	63	0.841
Radiotherapy					
Yes	3	33	19	68	0.184
No	100	75	52	60	0.082

Abbreviations: AITL, angioimmunoblastic T-cell lymphoma; ALCL, anaplastic large cell lymphoma; ASCT, autologous stem-cell transplantation; BM, bone marrow; CHOP, cyclophosphamide, doxorubicin, vincristine, and prednisolone; ECOG-PS, Eastern Cooperative Oncology Group Performance Status; IPI, International Prognostic Index; PIT, Prognostic Index for T-cell lymphoma; PTCL, NOS, peripheral T-cell lymphoma, not otherwise specified; OS, overall survival.

Supplemental Table 2. Separate analysis of patients in partial response after first line

Characteristic	Missing N	ASCT N (%)	Non-ASCT N (%)	p
Total number of evaluable patients		15	23	
Male sex	0	14 (93.3)	18 (78.3)	0.213
Age, years, median (range)	0	55 (31-63)	45 (27-63)	0.300
Older than 60		4 (26.7)	5 (21.7)	0.727
Histological diagnosis	0			
Peripheral T-cell lymphoma, NOS		5 (33.3)	11 (47.8)	0.220
Angioimmunoblastic T-cell lymphoma		2 (13.3)	8 (34.8)	
Anaplastic large cell lymphoma, ALK-negative		5 (33.3)	3 (13.0)	
Enteropathy-associated T-cell lymphoma		1 (6.7)	4 (4.3)	
Hepatosplenic T-cell lymphoma		2 (13.3)	0	
ECOG performance status 2-4	0	5 (33.3)	9 (39.1)	0.717
Ann-Arbor stage III-IV	2	14 (93.3)	20 (95.2)	0.806
LDH increased	2	9 (60.0)	14 (66.7)	0.681
Bone marrow infiltration	2	4 (26.7)	11 (47.8)	0.192
IPI	4			
0-1		2 (13.3)	1 (5.3)	0.748
2-3		8 (53.4)	12 (63.2)	
4-5		5 (33.3)	6 (31.6)	
PIT	2			
0-1		9 (60.0)	8 (38.1)	0.289
2		2 (13.3)	2 (13.3)	
3-4		4 (26.7)	4 (19.0)	
First-line treatment	0			
CHOP or CHOP-like		6 (40.0)	19 (82.6)	0.155
CHOEP or CHOEP-like		2 (13.3)	0	
MACOP-B or VACOP-B		1 (6.7)	2 (8.7)	
CHOP-like alternating with others		5 ¹ (33.3)	1 ² (4.3)	
Others		1 ³ (6.7)	1 ⁴ (4.3)	
Radiotherapy as part of first-line	0	0	0	-

¹ESHAP (n=4), Hyper-CHiDAM (n=1)

²ESHAP (n=1)

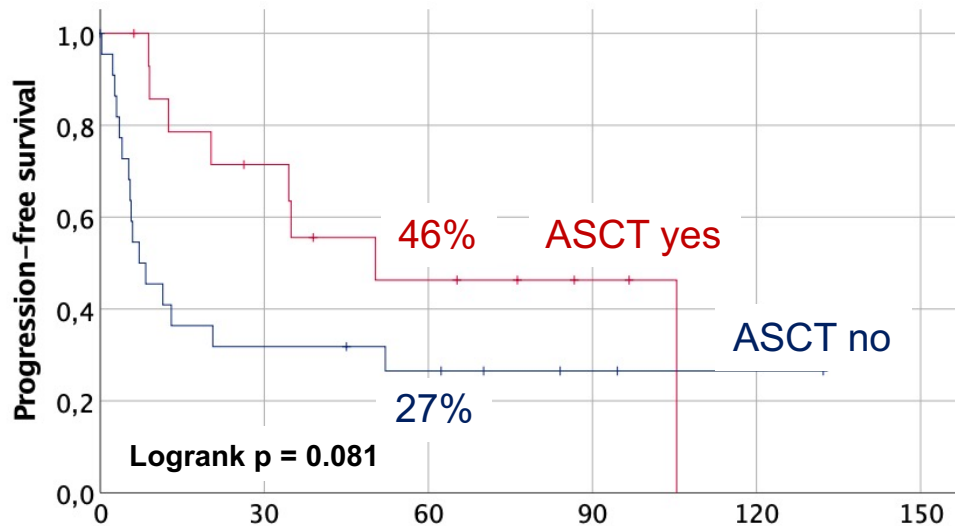
³ESHAP (n=1),

⁴IVE-MTX-dexamethasone (n=1),

Abbreviations: ASCT, autologous stem-cell transplantation performed after the first-line; CHOP, cyclophosphamide, doxorubicin, vincristine, and prednisolone; ECOG, Eastern Cooperative Oncology Group; ESHAP, etoposide, solumedrol, cytarabine, and cisplatin; HDMTX, high-dose methotrexate; Hyper-CHiDAM, hyperfractionated cyclophosphamide, high-dose arabinosylcytosine, and high-dose methotrexate; IPI, International Prognostic Index; IVE-MTX, ifosfamide, epirubicin, etoposide, and methotrexate; MACOP-B, methotrexate, doxorubicin, cyclophosphamide, vincristine, prednisone, and bleomycin; PIT, Prognostic Index for T-cell lymphoma; VACOP-B, etoposide, doxorubicin, cyclophosphamide, vincristine, prednisone, and bleomycin.

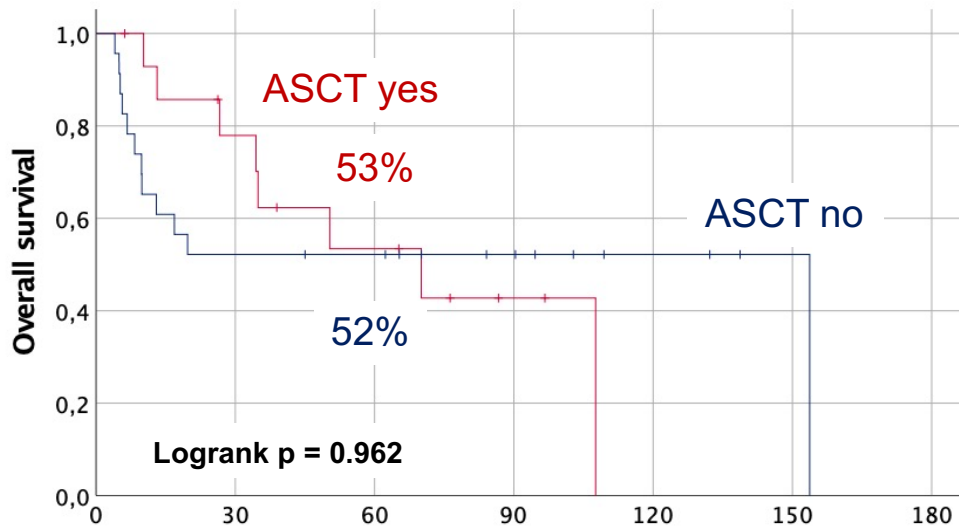
Supplemental Figure 1. Separate analysis of patients in partial response after the 1st line: Kaplan–Meier estimation of progression-free survival (A) and overall survival (B) in the autologous stem-cell transplantation (ASCT) and non-ASCT cohorts

A)



No. at risk	Months					
	0	30	60	90	120	150
ASCT	15	9	5	2	0	0
Non-ASCT	23	7	5	2	1	0

B)



No. at risk	Months						
	0	30	60	90	120	150	180
ASCT	15	10	6	2	0	0	0
Non-ASCT	23	12	11	6	3	1	0