

**Acalabrutinib for treatment of diffuse large B-cell lymphoma: results from a phase Ib study**

Paolo Strati,<sup>1</sup> Sven de Vos,<sup>2</sup> Jia Ruan,<sup>3</sup> Kami J. Maddocks,<sup>4</sup> Christopher R. Flowers,<sup>1,5</sup> Simon Rule,<sup>6</sup> Priti Patel,<sup>7</sup> Yan Xu,<sup>7</sup> Helen Wei,<sup>7</sup> Melanie M. Frigault,<sup>7</sup> Roser Calvo<sup>8</sup> and Martin J.S. Dyer<sup>9</sup>

<sup>1</sup>Department of Lymphoma and Myeloma, University of Texas MD Anderson Cancer Center, Houston, TX, USA; <sup>2</sup>Division of Hematology and Oncology, Department of Medicine, David Geffen School of Medicine, University of California at Los Angeles, Los Angeles, CA, USA; <sup>3</sup>Division of Hematology and Medical Oncology, Meyer Cancer Center, Weill Cornell Medicine, New York, NY, USA; <sup>4</sup>Division of Hematology, The James Comprehensive Cancer Center, The Ohio State University, Columbus, OH, USA; <sup>5</sup>Winship Cancer Institute of Emory University, Atlanta, GA, USA; <sup>6</sup>Department of Hematology, Plymouth University Medical School, Plymouth, UK; <sup>7</sup>AstraZeneca, South San Francisco, CA, USA; <sup>8</sup>AstraZeneca, Gaithersburg, MD, USA and <sup>9</sup>Ernest and Helen Scott Hematological Research Institute, University of Leicester, Leicester, UK

Correspondence: MARTIN J.S. DYER - [mjsd1@le.ac.uk](mailto:mjsd1@le.ac.uk)

doi:10.3324/haematol.2021.278654

## SUPPLEMENTARY APPENDIX

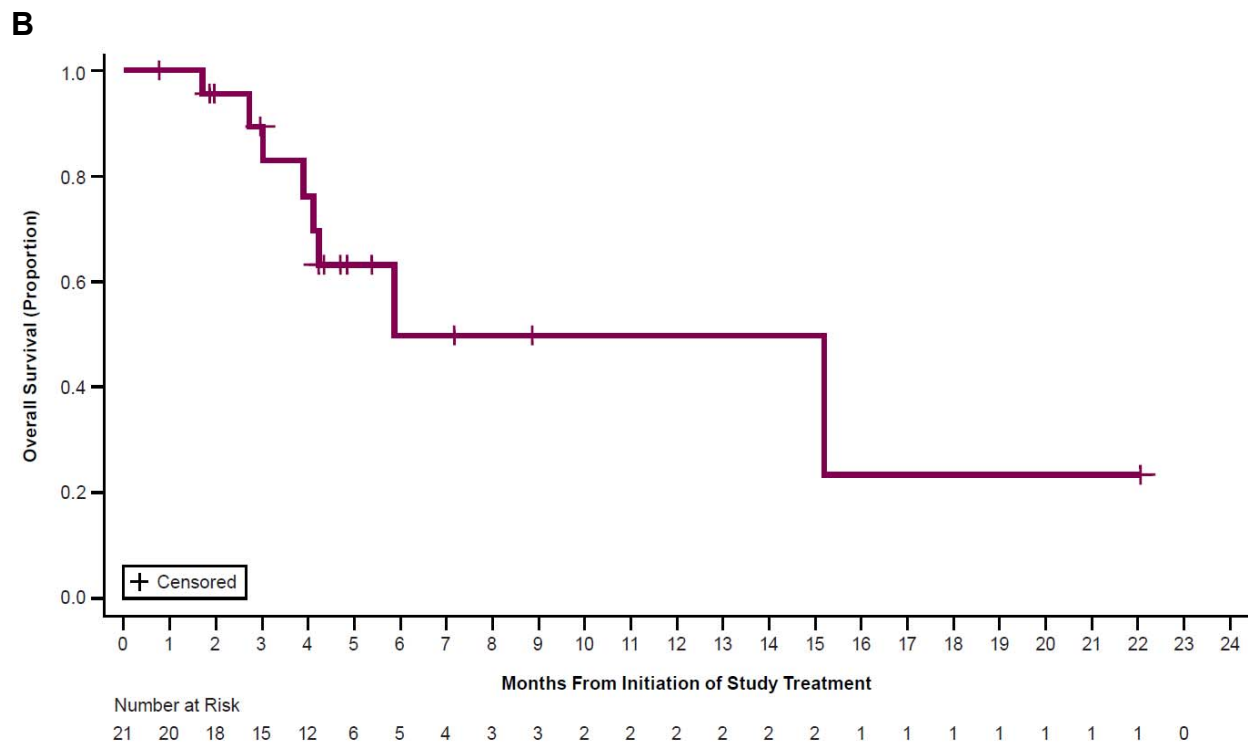
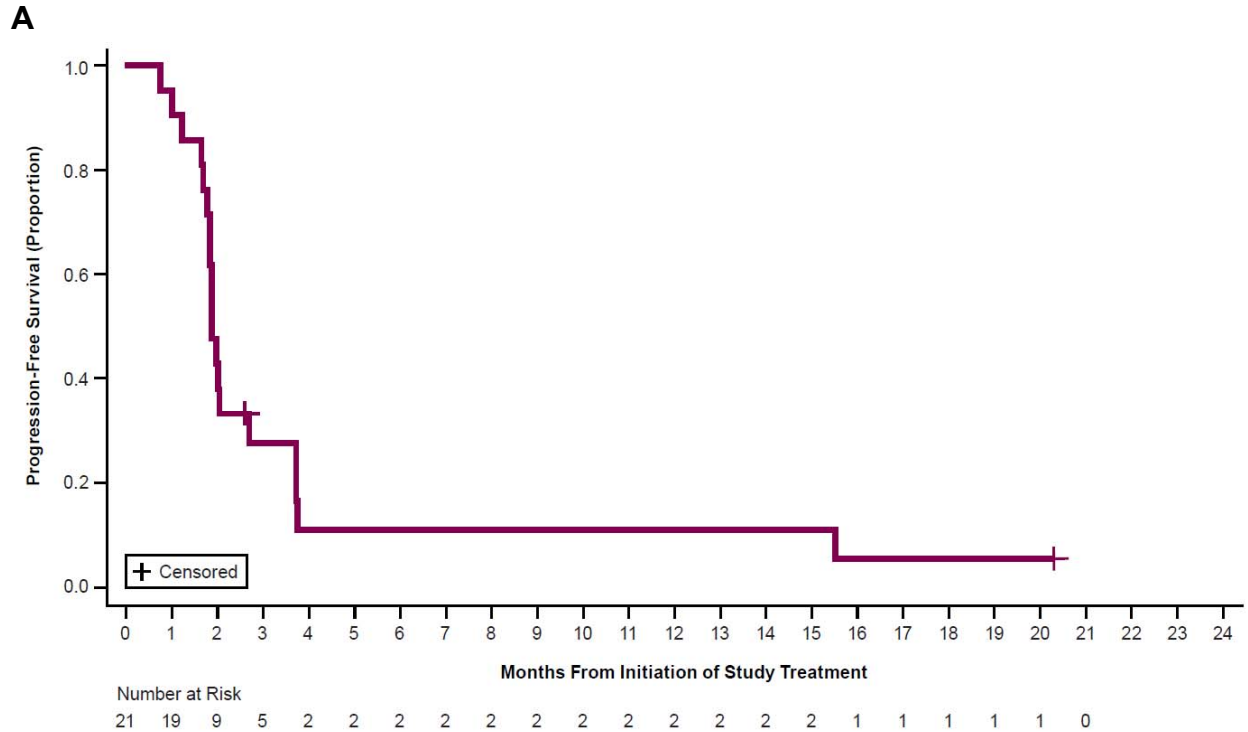
**Supplementary Table 1.** Demographics and baseline characteristics (n=21)

Characteristic	
Mean age, years (SD)	64.1 (14.7)
Age group, n (%)	
<65 years	12 (57.1)
≥65 years	9 (42.9)
Sex, n (%)	
Male	10 (47.6)
Female	11 (52.4)
Race, n (%)	
Asian	2 (9.5)
Black or African American	1 (4.8)
White	15 (71.4)
Other	1 (4.8)
Not reported	2 (9.5)
Ethnicity, n (%)	
Hispanic or Latino	2 (9.5)
Not Hispanic or Latino	19 (90.5)
Region, n (%)	
United States	15 (71.4)
United Kingdom	6 (28.6)
ECOG performance status	

0: fully active	4 (19.0)
1: restricted in physical strenuous activity	14 (66.7)
2: incapable of any work activity	3 (14.3)
Mean time from initial diagnosis to first dose, months (SD)	55.7 (77.3)
Autologous stem cell transplant	5 (23.8)
B symptoms, n (%)	
Any B symptoms	5 (23.8)
Unintentional weight loss	2 (9.5)
Fever over 38°C	2 (9.5)
Night sweats	4 (19.0)
Ann Arbor Stage, n (%)	
Stage I	1 (4.8)
Stage II	2 (9.5)
Stage III	6 (28.6)
Stage IV	12 (57.1)
Bone marrow involvement, n (%)	0
Extranodal disease, n (%)	12 (57.1)

ECOG, Eastern Cooperative Oncology Group; SD, standard deviation.

**Supplementary Figure 1.** Kaplan-Meier estimates. **A)** Progression-free survival; **B)** Overall survival.



**Supplementary Figure 2.** Mean (standard deviation) pharmacokinetic parameters for responders and non-responders. **A)**  $C_{max}$ ; **B)**  $AUC_{last}$ . Circles represent individual patients. The red bars and error bars represent mean and standard deviation, respectively.  $C_{max}$ , maximum concentration;  $AUC_{last}$ , area under the concentration time curve from zero to time of last measurable concentration.

