

**Serum monoclonal component in chronic lymphocytic leukemia: baseline correlations and prognostic impact**

Pablo Mozas,<sup>1\*</sup> Juan A. Piñeyroa,<sup>1\*</sup> Ferran Nadeu,<sup>2,3</sup> Laura Magnano,<sup>1,2</sup> Andrea Rivero,<sup>1</sup> Alfredo Rivas-Delgado,<sup>1</sup> Alex Bataller,<sup>1</sup> Aleix Fabregat,<sup>4</sup> Eva Giné,<sup>1,2</sup> Tycho Baumann,<sup>1</sup> Neus Villamor,<sup>2,3,5</sup> Juan Ignacio Aróstegui,<sup>6</sup> Marta Aymerich,<sup>5</sup> Armando López-Guillermo,<sup>1,2,3,7</sup> Elías Campo,<sup>2,3,5,7</sup> and Julio Delgado<sup>1,2,3</sup>

<sup>1</sup>Department of Hematology, Hospital Clínic, Barcelona; <sup>2</sup>Institut d'Investigacions Biomèdiques August Pi i Sunyer (IDIBAPS), Barcelona; <sup>3</sup>Centro de Investigación Biomédica en Red de Cáncer (CIBERONC), Madrid; <sup>4</sup>Department of Biochemistry and Molecular Biology, Hospital Clínic, Barcelona; <sup>5</sup>Hematopathology Unit, Department of Pathology, Hospital Clínic, Barcelona; <sup>6</sup>Department of Immunology, Hospital Clínic, Barcelona and <sup>7</sup>Universitat de Barcelona, Barcelona, Spain

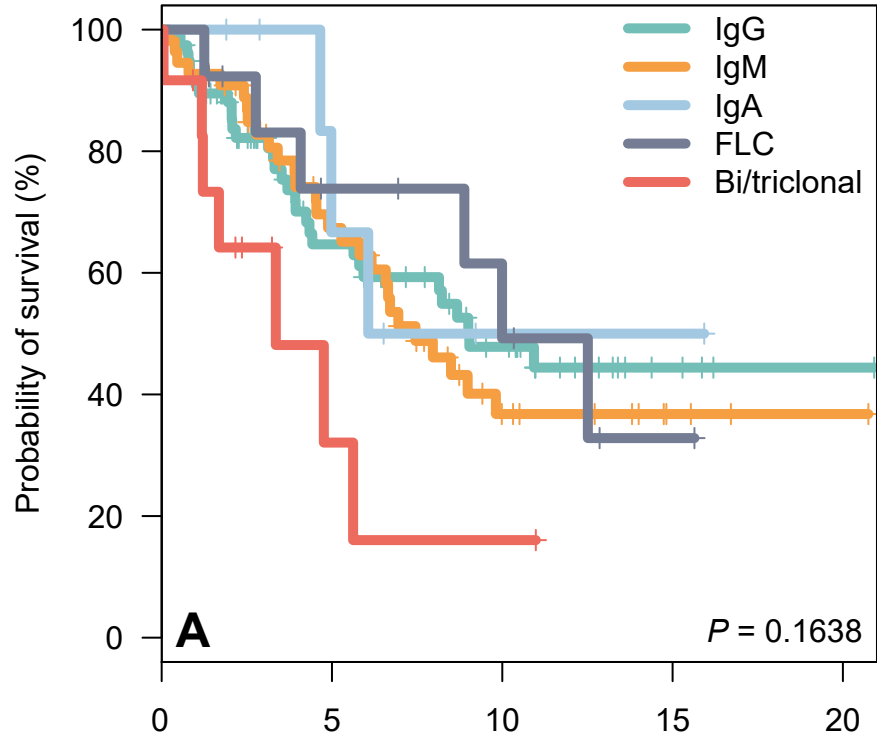
\*PM and JAP contributed equally as co-first authors.

Correspondence: PABLO MOZAS - mozas@clinic.cat

doi:10.3324/haematol.2020.263228

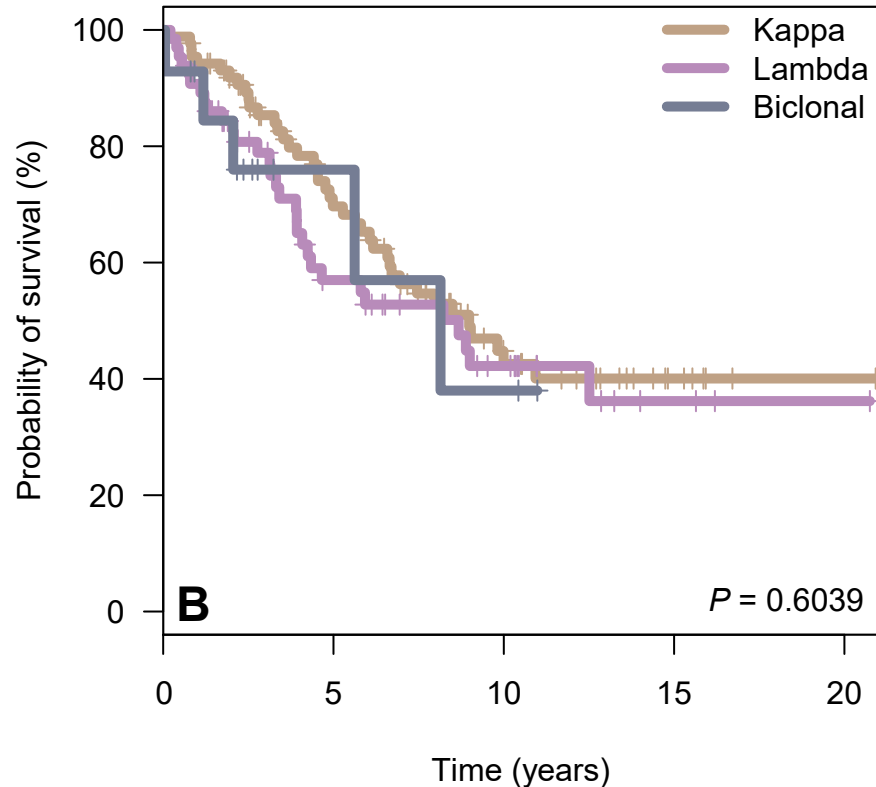
**Supplementary Table 1.** Immunochemical features for the 165 patients with a positive serum immunofixation

<b>Immunoglobulin isotype, n (%)</b>	IgG-κ	37 (22)
	IgG-λ	35 (21)
	IgM-κ	41 (25)
	IgM-λ	14 (8)
	IgA-κ	4 (2)
	IgA-λ	4 (2)
	κ-FLC	2 (1)
	λ-FLC	10 (6)
	Biclonal/triclonal	18 (11)
<b>Light-chain concordance between sIFE and restriction by flow cytometry, n</b>	Information not available or biclonal sIFE	33
	Available information	132
	<i>Concordant</i>	95 (72%)
	<i>Discordant</i>	37 (28%)
<i>sIFE, serum immunofixation; Ig, immunoglobulin; FLC, free light chains.</i>		



**No. at risk:**

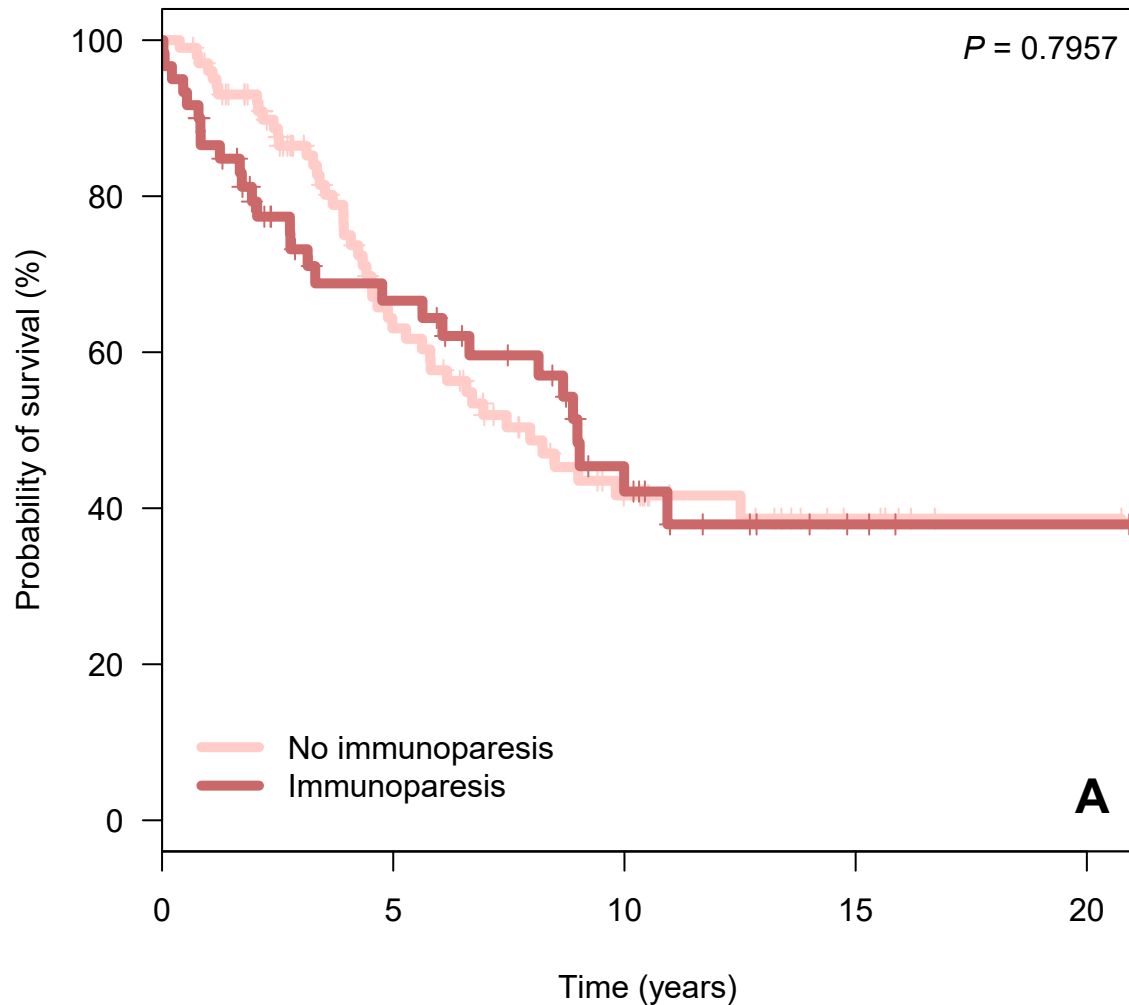
	0	5	10	15	20
IgG	78	36	19	4	1
IgM	55	30	10	3	1
IgA	8	4	1	1	0
FLC	13	7	4	1	0
Bi/triclonal	12	2	1	0	0



**No. at risk:**

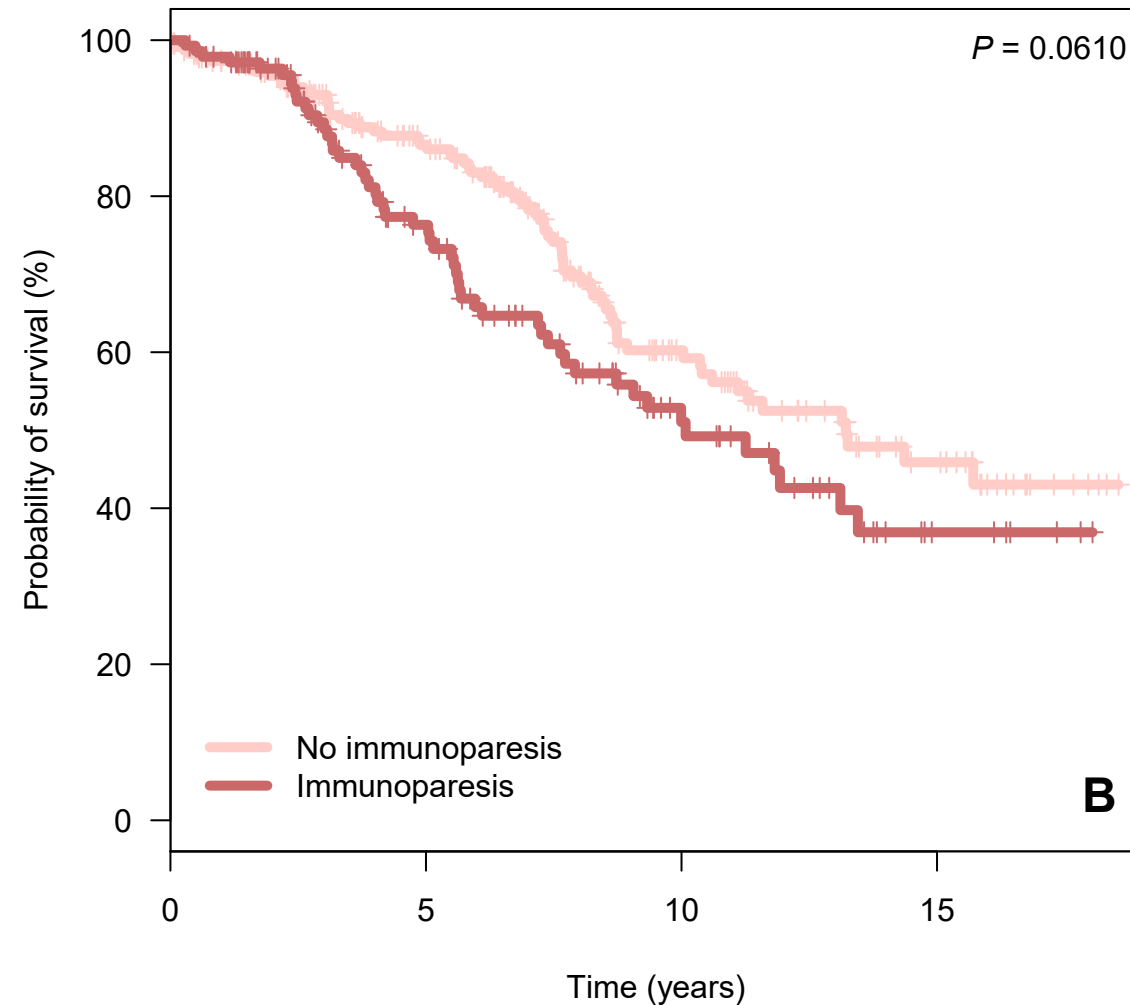
	0	5	10	15	20
Kappa	87	48	19	6	1
Lambda	65	27	14	3	1
Biclonal	14	4	2	0	0

**Supplementary Figure 1.** Overall survival according to the heavy chain (A) and light chain (B) isotype. FLC, free light chains.

**+sIFE**

**No. at risk:**

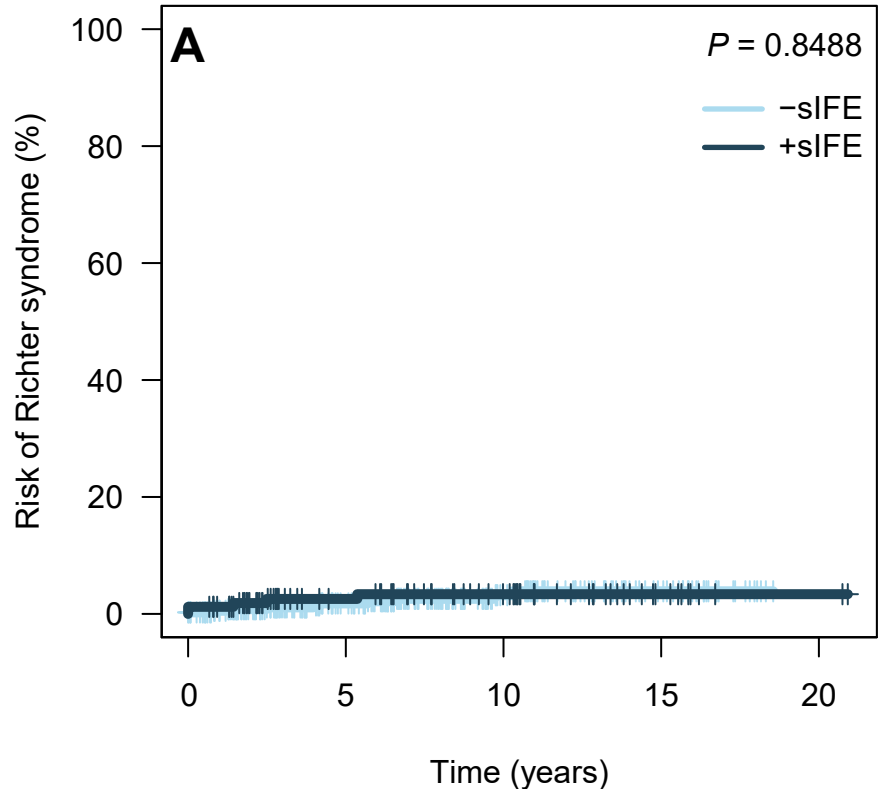
	0	5	10	15	20
No immunoparesis	102	47	21	6	1
Immunoparesis	60	30	13	3	1

**-sIFE**

**No. at risk:**

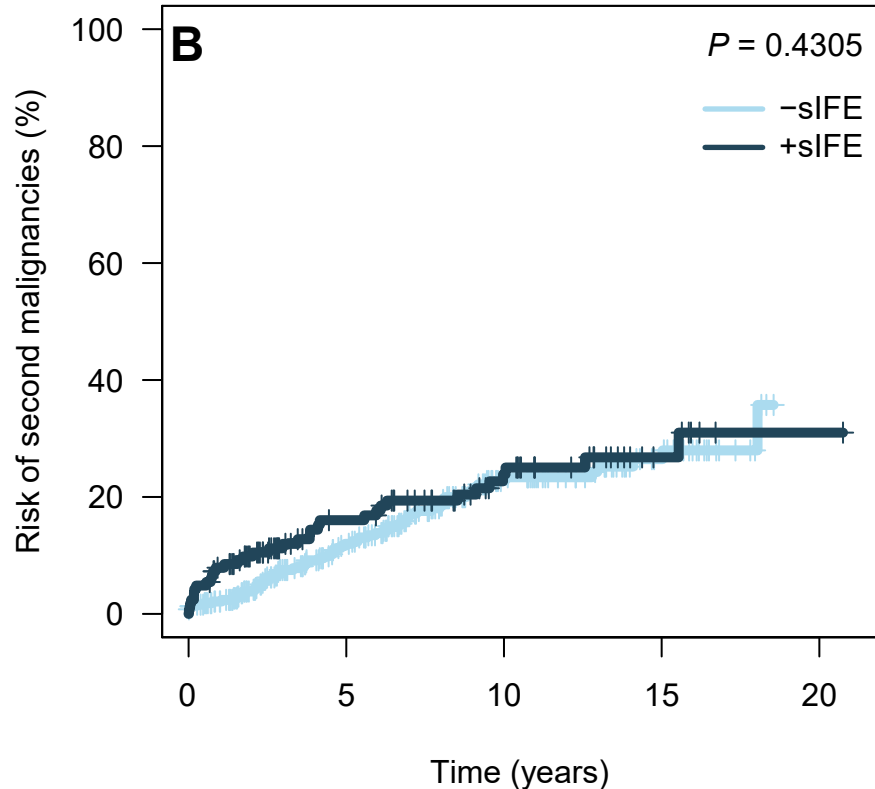
	0	5	10	15
No immunoparesis	231	151	59	22
Immunoparesis	143	74	28	6

**Supplementary Figure 2.** Overall survival according to the presence of immunoparesis in patients with negative (A) and positive (B) serum immunofixation (sIFE).



**No. at risk:**

— -sIFE	382	228	86	28	0
— +sIFE	165	78	35	9	2



**No. at risk:**

— -sIFE	382	212	72	23	0
— +sIFE	165	70	29	7	1

**Supplementary Figure 3.** Risk of Richter syndrome (A) and of second malignancies (B) according to serum immunofixation (sIFE).