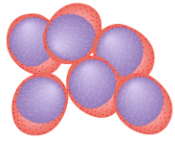


The heterogeneous response to BCL-2 Homology 3 mimetic in diffuse large B-cell lymphomas is mediated by selective interactions between BAX, BAK and anti-apoptotic BCL-2 proteins



Diffuse large B-cell lymphoma (DLBCL)

- ~40% display high expression of BCL-2, due to t(14;18)(q32.3;q21.3) and also gene copy number alterations
- BCL2 is also commonly mutated genes in DLBCL
- Other BCL-2 family proteins like BCL-XL and MCL-1 might be important therapeutic targets



Comparison of BH3-mimetics in an extensive panel of DLBCL cell lines and primary cells identified subgroups of that exhibited marked and specific dependency on either BCL-2, BCL-XL or MCL-1 for survival

