

Impact of idelalisib on health-related quality of life in patients with relapsed chronic lymphocytic leukemia in a phase III randomized trial

Paolo Ghia,¹ Steven E. Coutre,² Bruce D. Cheson,³ Jacqueline C. Barrientos,⁴ Peter Hillmen,⁵ Andrew R. Pettitt,⁶ Andrew D. Zelenetz,⁷ Sanatan Shreay,⁸ Michael Hallek⁹ and Richard R. Furman¹⁰

¹Università Vita-Salute San Raffaele and IRCCS Ospedale San Raffaele, Milano, Italy; ²Stanford School of Medicine, Stanford, CA, USA; ³Georgetown University Hospital, Washington, DC, USA; ⁴Zucker School of Medicine at Hofstra/Northwell, Hempstead, NY, USA; ⁵St. James's University Hospital, Leeds, UK; ⁶University of Liverpool, Liverpool, UK; ⁷Memorial Sloan Kettering Cancer Center, New York, NY, USA; ⁸Gilead Sciences, Inc, Foster City, CA, USA; ⁹Department I of Internal Medicine, University Hospital of Cologne, Cologne, Germany and ¹⁰Weill Cornell Medical College, New York, NY, USA.

Correspondence: PAOLO GHIA - ghia.paolo@hsr.it

doi:10.3324/haematol.2019.238808

SUPPLEMENTARY MATERIALS

Impact of idelalisib on health-related quality of life in patients with relapsed chronic lymphocytic leukemia in a phase 3 randomized trial

Paolo Ghia,¹ Steven E. Coutre,² Bruce D. Cheson,³ Jacqueline C. Barrientos,⁴ Peter Hillmen,⁵ Andrew R. Pettitt,⁶ Andrew D. Zelenetz,⁷ Sanatan Shrey,⁸ Michael Hallek,⁹ Richard R. Furman¹⁰

¹Università Vita-Salute San Raffaele and IRCCS Istituto Scientifico San Raffaele, Milano, Italy

²Stanford School of Medicine, Stanford, CA, USA

³Georgetown University Hospital, Washington D.C., USA

⁴Zucker School of Medicine at Hofstra/Northwell, Hempstead, NY, USA

⁵St. James's University Hospital, Leeds, UK

⁶University of Liverpool, Liverpool, UK

⁷Memorial Sloan Kettering Cancer Center, New York, NY, USA

⁸Gilead Sciences, Inc, Foster City, CA, USA

⁹University Hospital of Cologne, Cologne, Germany

¹⁰Weill Cornell Medical College, New York, NY, USA

Supplementary Table 1. Assessment endpoints of FACT-Leu

Domain	Number of Items	Score Range ^a	MID ^b
Leukemia subscale (LeuS)	17	0–68	4–7
Physical well-being (PWB)	7	0–28	2–3
Social/family well-being (S/FWB)	7	0–28	2–3
Functional well-being (FWB)	7	0–28	2–3
Emotional well-being (EWB)	6	0–24	2
Composites			
Trial outcome index (TOI) ^c	31	0–124	5–6
FACT-Leu total ^d	44	0–176	6–12

^aHigher scores reflect better HRQL and lower symptom burden.

^bWhen examining differences for groups in a randomized trial, the lower end of the MID range is utilized (Trask PC, et al. *Leuk Res.* 2012 Apr;36(4):438-42).

^cTOI = LeuS + PWB + FWB

^dFACT-Leu Total = LeuS + PWB + S/FWB + EWB + FWB

EWB, emotional well-being; FACT-Leu, Functional Assessment of Cancer Therapy–Leukemia;

FWB, functional well-being; LeuS, leukemia sub-scale; MID, minimally important difference;

PWB, physical well-being; S/FWB; social/family well-being.

Supplementary Table 2. Compliance and completion rates of FACT-Leu questionnaire

Visit	Treatment	N	Compliance Rate	Completion Rate				
				PWB	S/FWB	EWB	FWB	LEUS
Week 2	Idelalisib	110	95.5	100	100	99	99	100
	Placebo	108	93.5	99	98	98	98	99
Week 4	Idelalisib	108	95.4	100	100	99	99	99
	Placebo	106	92.5	98	98	98	98	100
Week 6	Idelalisib	107	89.7	100	100	99	100	97.9
	Placebo	106	89.6	98.9	97.9	96.8	97.9	97.9
Week 8	Idelalisib	106	88.7	100	98.9	100	100	98.9
	Placebo	100	92.0	98.9	98.9	98.9	100	98.9
Week 12	Idelalisib	99	83.8	100	100	100	100	98.8
	Placebo	93	84.9	100	100	98.7	100	97.5
Week 16	Idelalisib	85	82.4	98.6	100	100	100	100
	Placebo	71	74.6	98.1	100	100	100	100
Week 20	Idelalisib	72	84.7	100	100	100	100	100
	Placebo	54	75.9	100	100	100	100	100
Week 24	Idelalisib	59	86.4	100	100	100	100	98
	Placebo	40	77.5	100	100	100	100	100
Week 30	Idelalisib	51	76.5	100	100	100	100	100
	Placebo	31	80.6	100	100	100	100	100
Week 36	Idelalisib	39	79.5	100	100	100	100	100
	Placebo	25	72.0	100	100	100	100	100
Week 42	Idelalisib	30	90.0	100	100	96.3	96.3	96.3
	Placebo	15	66.7	100	100	100	100	100
Week 48	Idelalisib	26	80.8	100	100	100	100	95.2
	Placebo	10	70.0	100	100	100	100	100

Subscale completion was defined as the proportion of patients who completed all questions in a domain at a scheduled time point relative to all patients who completed any question at that time point.

EWB, emotional well-being; FACT-Leu, Functional Assessment of Cancer Therapy–Leukemia; FWB, functional well-being; LeuS, leukemia sub-scale; PWB, physical well-being; S/FWB; social/family well-being.

Supplementary Table 3. Summary of time to symptom deterioration^a

Subscale	Idelalisib + rituximab (N = 110)	Placebo + rituximab (N = 110)
PWB		
n	105	104
KM median (95% CI), weeks	35.9 (19, NR)	16.6 (11.7, 48.6)
FWB		
n	103	102
KM median (95% CI), weeks	38.3 (8.6, NR)	20.1 (12.1, 64.3)
EWB		
n	103	102
Median (95% CI), weeks	42.1 (24, NR)	47.9 (23.7, 48.6)
S/FWB		
n	104	102
KM median (95% CI), weeks	NR (20.9, NR)	NR (12.6, NR)

^aSymptom deterioration is defined as a decrease of ≥ 3 points from baseline. Patients who did not experience a symptom deterioration compared with baseline were censored at their last available HRQL assessment time. To calculate symptom deterioration time, the following was used: Time to symptom deterioration (weeks) = (date of first symptom deterioration – date of randomization + 1)/7.

CI, confidence interval; EWB, emotional well-being; FWB, functional well-being; KM, Kaplan-Meier; n, number; NR, not reached; PWB, physical well-being; S/FWB; social/family well-being.

Supplementary Table 4. Mean and standard deviation of change from baseline in composite scores over time by age of patient

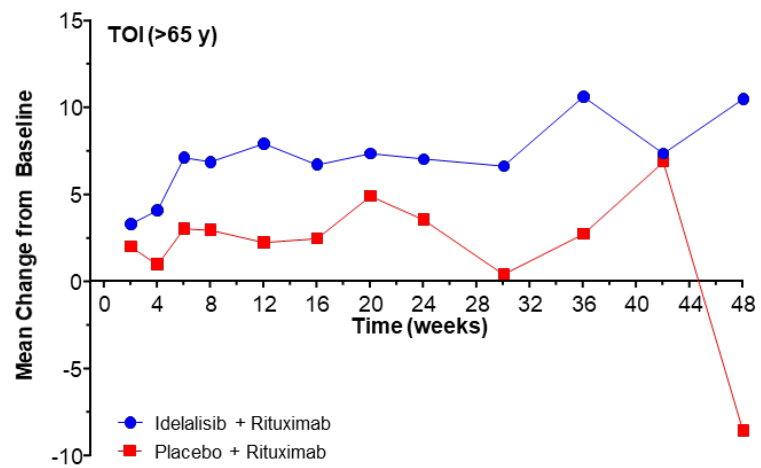
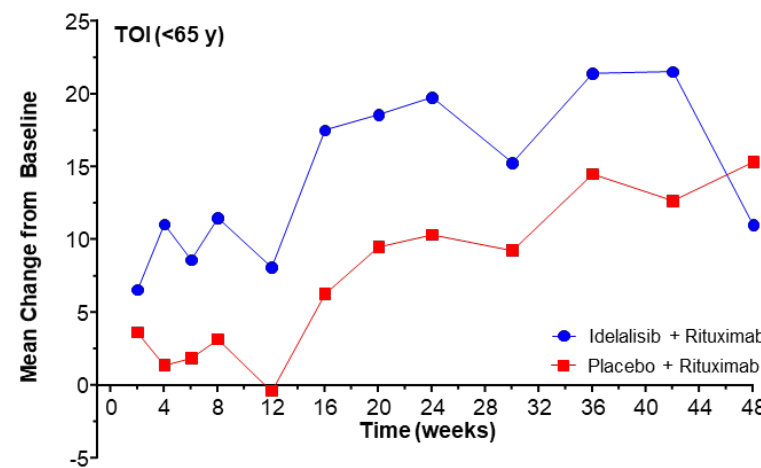
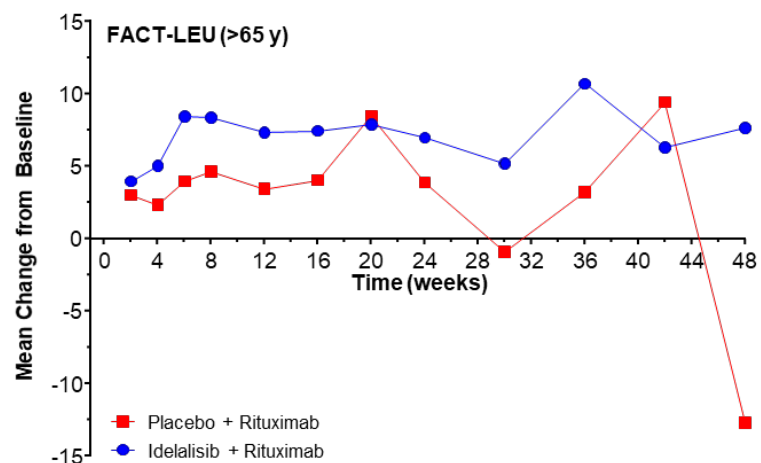
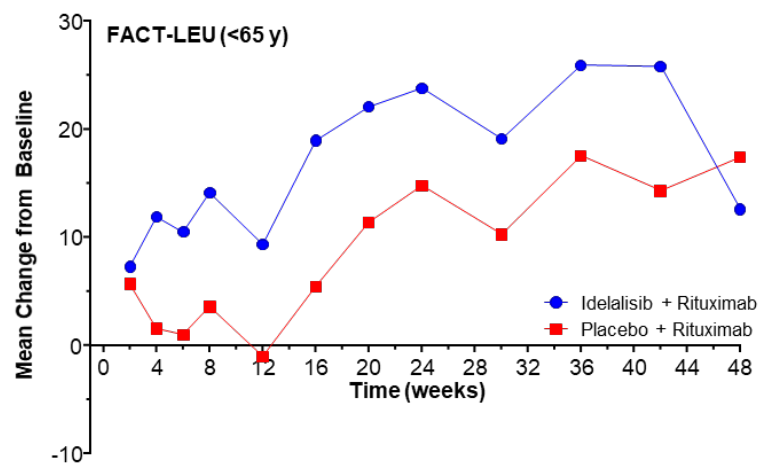
Subscale	Idelalisib + rituximab		Placebo + rituximab	
	Age (y)		Age (y)	
	<65 (n = 21)	≥65 (n = 89)	<65 (n = 27)	≥65 (n = 83)
FACT-Leu				
Week 2	7.32 (12.5)	3.99 (15.9)	5.70 (19.1)	3.02 (15.7)
Week 4	11.9 (19.7)	5.05 (19.8)	1.57 (24.5)	2.34 (16.4)
Week 6	10.5 (23.3)	8.45 (21.1)	1.02 (22.5)	3.99 (16.4)
Week 8	14.2 (28.4)	8.37 (23.5)	3.62 (24.7)	4.66 (17.5)
Week 12	9.39 (27.7)	7.35 (20.4)	-0.98 (30.7)	3.44 (17.2)
Week 16	19.0 (23.2)	7.44 (19.7)	5.48 (22.9)	4.04 (21.8)
Week 20	22.1 (22.0)	7.89 (20.0)	11.4 (17.5)	8.49 (15.8)
Week 24	23.8 (25.6)	7.01 (25.2)	14.8 (15.2)	3.90 (19.3)
Week 30	19.1 (29.9)	5.20 (24.4)	10.3 (22.9)	-0.90 (19.6)
Week 36	26.0 (26.5)	10.7 (25.7)	17.6 (10.1)	3.25 (16.2)
Week 42	25.8 (32.6)	6.32 (30.5)	14.3 (18.4)	9.42 (13.0)
Week 48	12.6 (14.1)	7.67 (28.5)	17.4 (15.5)	-12.7 (24.1)
TOI				
Week 2	6.57 (10.2)	3.33 (12.2)	3.63 (16.4)	2.03 (12.9)
Week 4	11.0 (16.7)	4.13 (15.1)	1.39 (21.2)	1.03 (13.4)
Week 6	8.60 (20.6)	7.14 (16.4)	1.89 (20.4)	3.08 (14.3)
Week 8	11.5 (25.6)	6.90 (17.2)	3.16 (21.6)	3.00 (14.9)
Week 12	8.08 (25.2)	7.94 (15.5)	-0.39 (26.4)	2.30 (13.0)
Week 16	17.5 (21.0)	6.74 (15.9)	6.29 (18.5)	2.52 (16.9)
Week 20	18.5 (20.0)	7.39 (16.4)	9.50 (16.4)	4.94 (11.7)
Week 24	19.8 (23.1)	7.08 (19.6)	10.3 (14.5)	3.60 (14.4)
Week 30	15.3 (27.2)	6.66 (20.2)	9.25 (21.1)	0.47 (14.5)
Week 36	21.4 (23.6)	10.64 (19.6)	14.50 (10.5)	2.78 (12.1)
Week 42	21.5 (28.1)	7.38 (23.2)	12.7 (17.2)	6.91 (11.0)

Week 48	11.0 (11.4)	10.5 (16.8)	15.3 (13.1)	-8.50 (19.0)
---------	-------------	-------------	-------------	--------------

Data presented as mean (standard deviation).

The number of evaluable subjects n is shown for baseline decreases over time.

Supplementary Figure 1. Mean change from baseline in composite scores over time stratified by age of patient



FACT-Leu, Functional Assessment of Cancer Therapy–Leukemia; TOI, trial outcome index.