

Pre-treatment CD38-positive regulatory T cells affect the durable response to daratumumab in relapsed/refractory multiple myeloma patients

Akihiro Kitadate, Hiroki Kobayashi, Yoshiaki Abe, Kentaro Narita, Daisuke Miura, Masami Takeuchi, and Kosei Matsue

Division of Hematology/Oncology, Department of Medicine, Kameda Medical Center, Kamogawa, Japan

Correspondence: AKIHIRO KITADATE - akihiro_kitadate@yahoo.co.jp

doi:10.3324/haematol.2019.219683

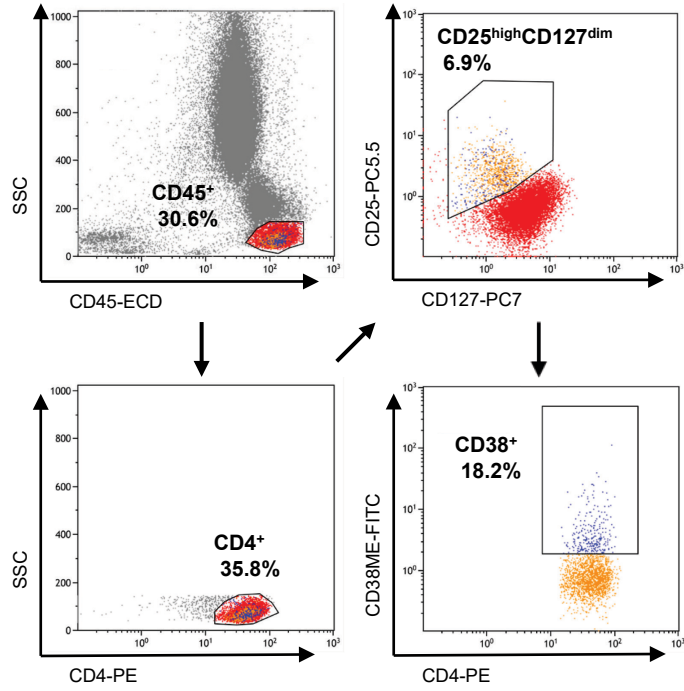
Supplementary Figure Legends

Figure S1. Analysis of CD38-positive Tregs after daratumumab treatment using CD38 multi-epitope antibody.

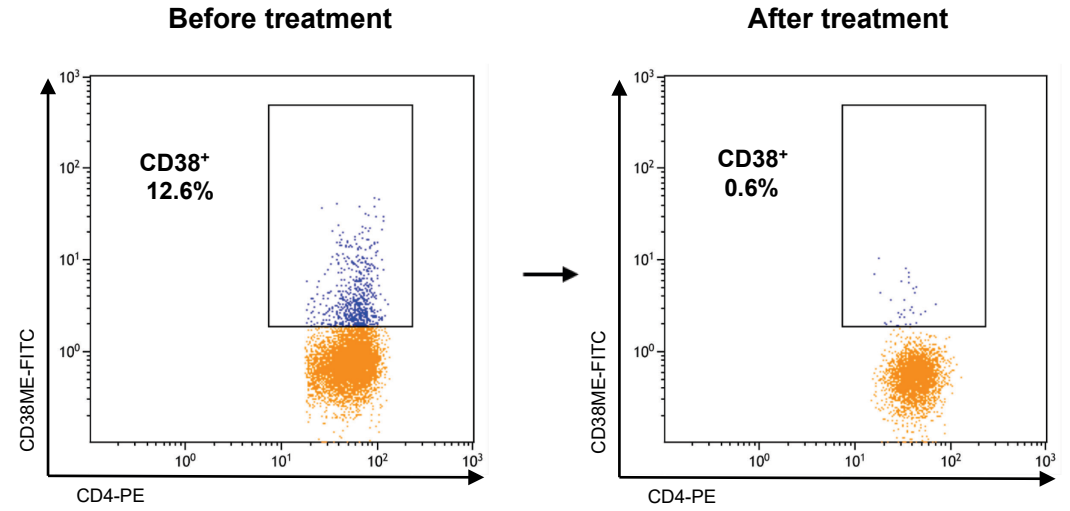
- A. Flow cytometry analysis for circulating CD38⁺ Tregs using CD38 multi-epitope (CD38ME) antibody (Cytognos). The percentages of the gated subsets are shown.
- B. Shown are representative example of CD38⁺ Tregs before and 4 weeks after daratumumab treatment. The percentages of the gated subsets are shown.
- C. Difference between the frequency of the CD38⁺ Tregs before and 4 weeks after daratumumab treatment.

Y-axis: absolute numbers of Treg cells (cells/ μ L).

A



B



C

