

Long-term follow-up of a trial comparing post-remission treatment with autologous or allogeneic bone marrow transplantation or intensive chemotherapy in younger acute myeloid leukemia patients

Frédéric Baron,¹ Fabio Efficace,² Laura Cannella,² Roel Willemze,³ Marco Vignetti,² Petra Muus,^{4,5} Jean-Pierre Marie,⁶ Dario Ferrero,⁷ Paola Fazi,² Edoardo La Sala,² Jean-Henri Bourhis,⁸ Francesco Fabbiano,⁹ Alberto Bosi,¹⁰ Marco Sborgia,¹¹ Giovanni Martinelli,¹² Sebastian Witmebel,¹³ Silvia Trisolini,¹⁴ Maria Concetta Petti,¹⁴ Constantijn J.M. Halkes,³ Walter J.F.M. van der Velden,⁴ Theo de Witte,⁴ Sergio Amadori,¹⁵ Robert A Zittoun⁶ and Stefan Suciu¹⁶

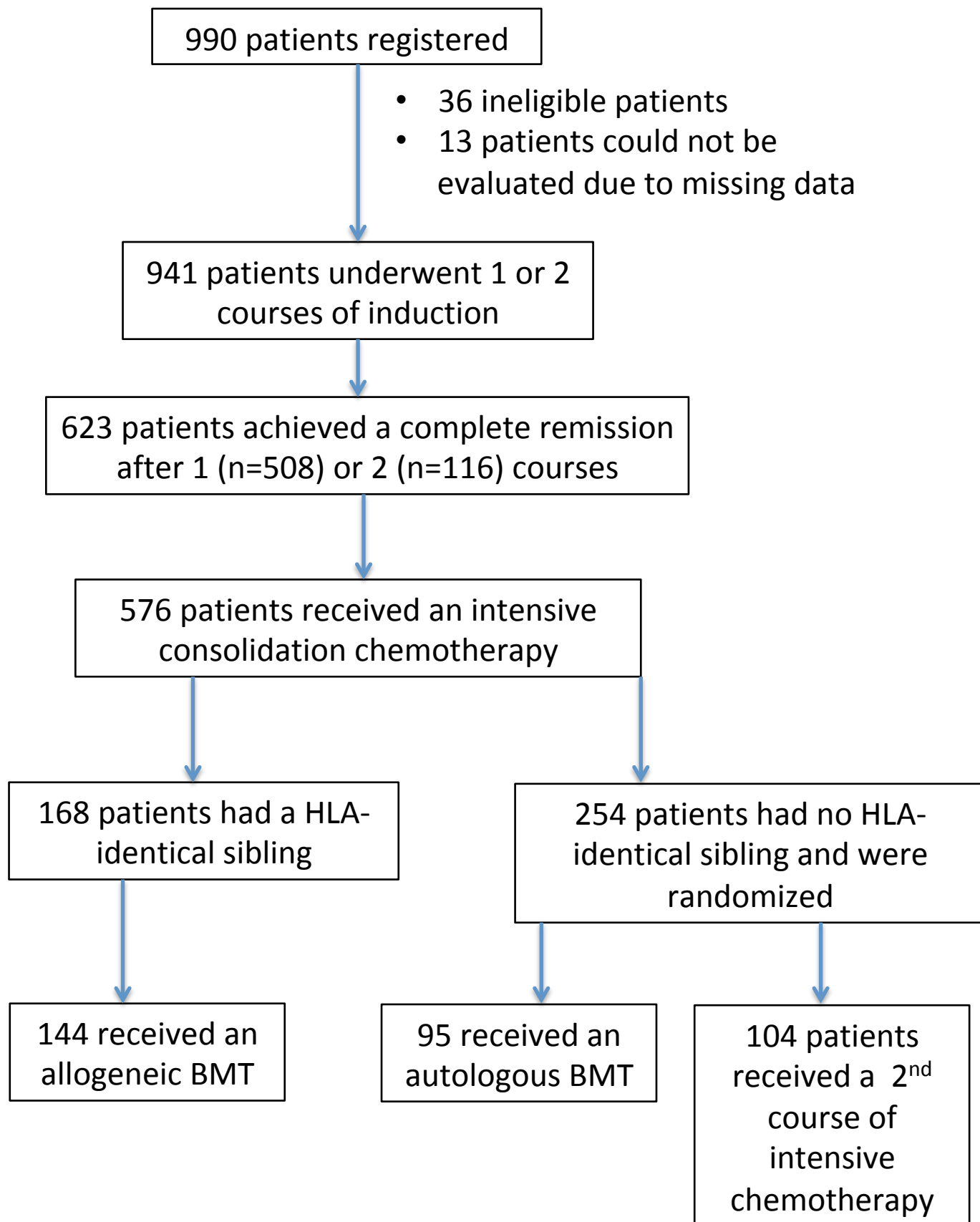
¹GIGA-I3 and CHU, University of Liège, Liège, Belgium; ²Gruppo Italiano Malattie Ematologiche Dell'Adulto GIMEMA, Rome, Rome, Italy; ³Leiden University Medical Center, Leiden, the Netherlands; ⁴Radboud University Medical Center, Nijmegen, the Netherlands; ⁵Currently: King's College Hospital, London, UK; ⁶Hôtel-Dieu Hospital, Paris, France; ⁷Department of Medicine and Experimental Oncology, Torino, Italy; ⁸Gustave Roussy cancer campus Grand Paris, Villejuif, France; ⁹Ospedali Riuniti "Villa Sofia-Cervello", Palermo, Italy; ¹⁰University of Florence, Firenze, Italy; ¹¹Ospedale Civile, Pescara, Italy; ¹²Istituto Scientifico Romagnolo per lo Studio e la Cura dei Tumori (IRST) IRCCS, Meldola, Italy; ¹³Jules Bordet Institute, Brussels, Belgium; ¹⁴Università La Sapienza, Rome, Italy; ¹⁵University Tor Vergata, Rome, Italy and ¹⁶EORTC Headquarters, Brussels, Belgium

Correspondence: FREDERIC BARON - f.baron@uliege.be

doi:10.3324/haematol.2019.221333

Supplementary Figure 1.

CONSORT Flow Diagram



Supplementary Figure 2. Outcomes based on intent-to-treatment analyses.

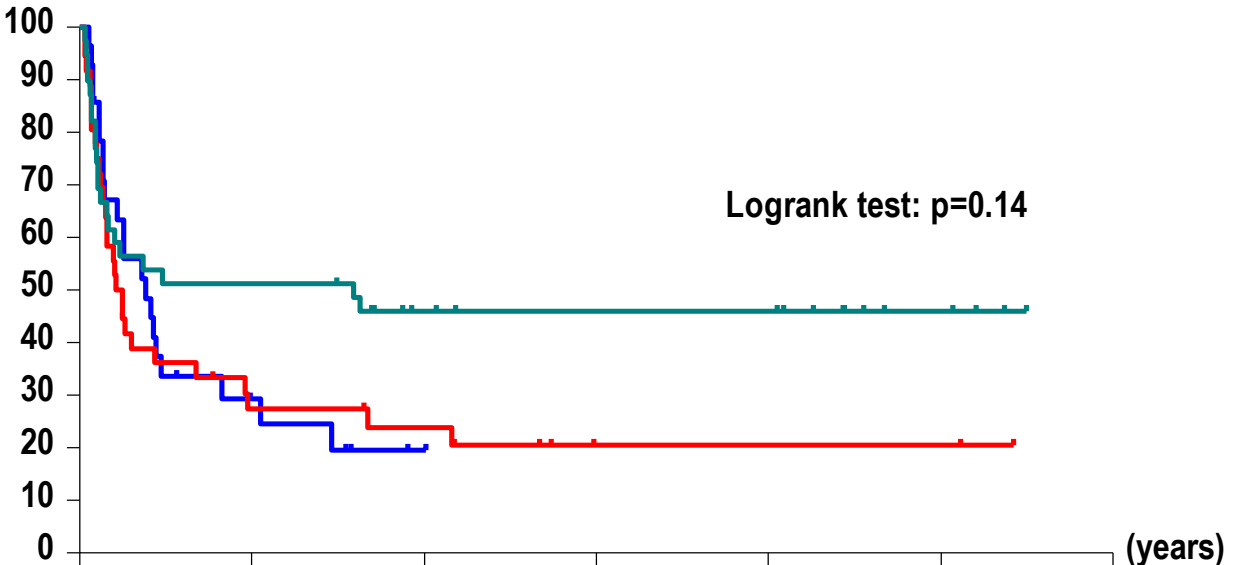
A DFS from CR according to treatment group in patients < 46 years of age

B DFS from CR according to treatment group in patients without good-risk cytogenetic features

C DFS from CR according to treatment group in patients with good-risk cytogenetic features

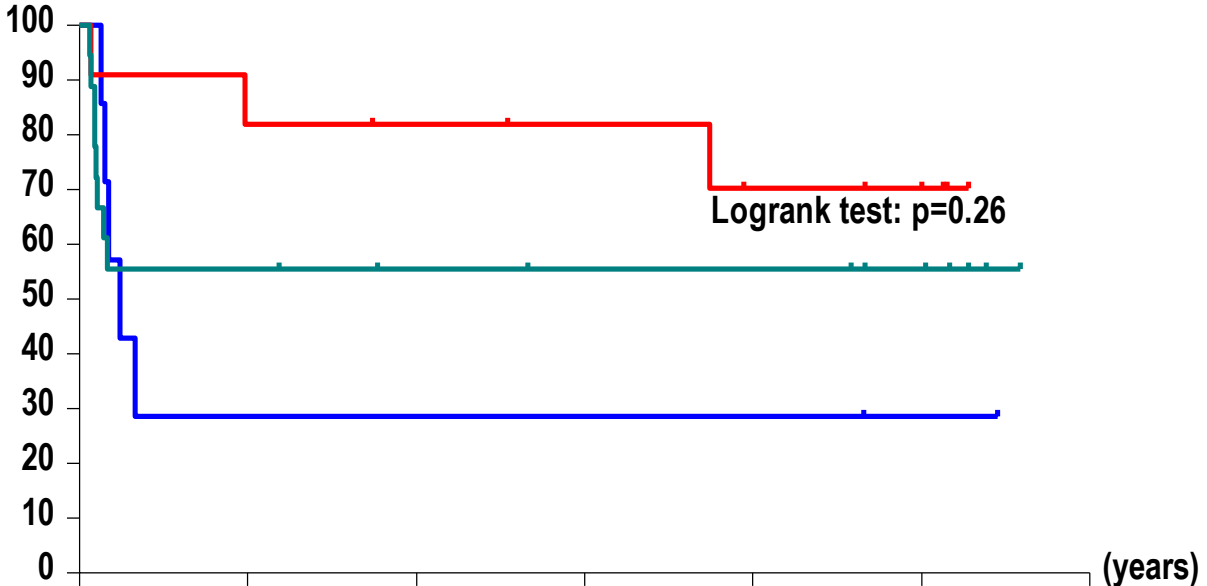
D Cumulative incidence of relapse patients alive in first CR 5 years after the achievement of CR, according to treatment group

Supplementary Figure 2 A.



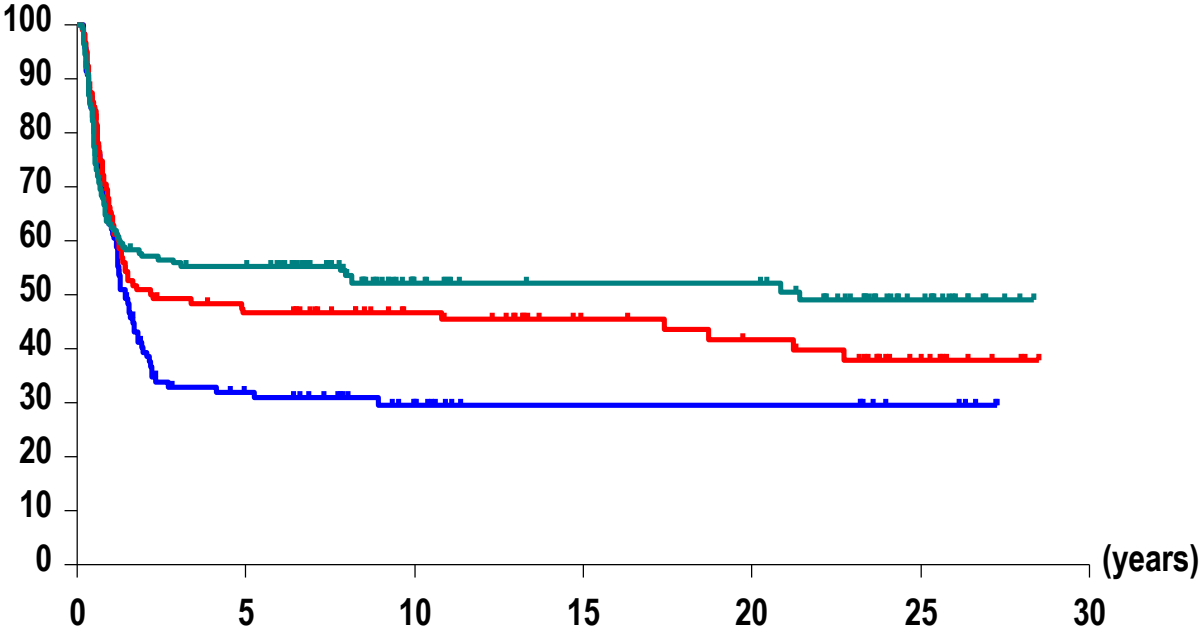
O	N	Number of patients at risk :						Trt planned
21	28	6	1	0	0	0	0	ICT2
28	36	9	7	2	2	2	2	Auto-BMT
21	39	20	13	11	11	4	4	Allo-BMT

Supplementary Figure 2 B.



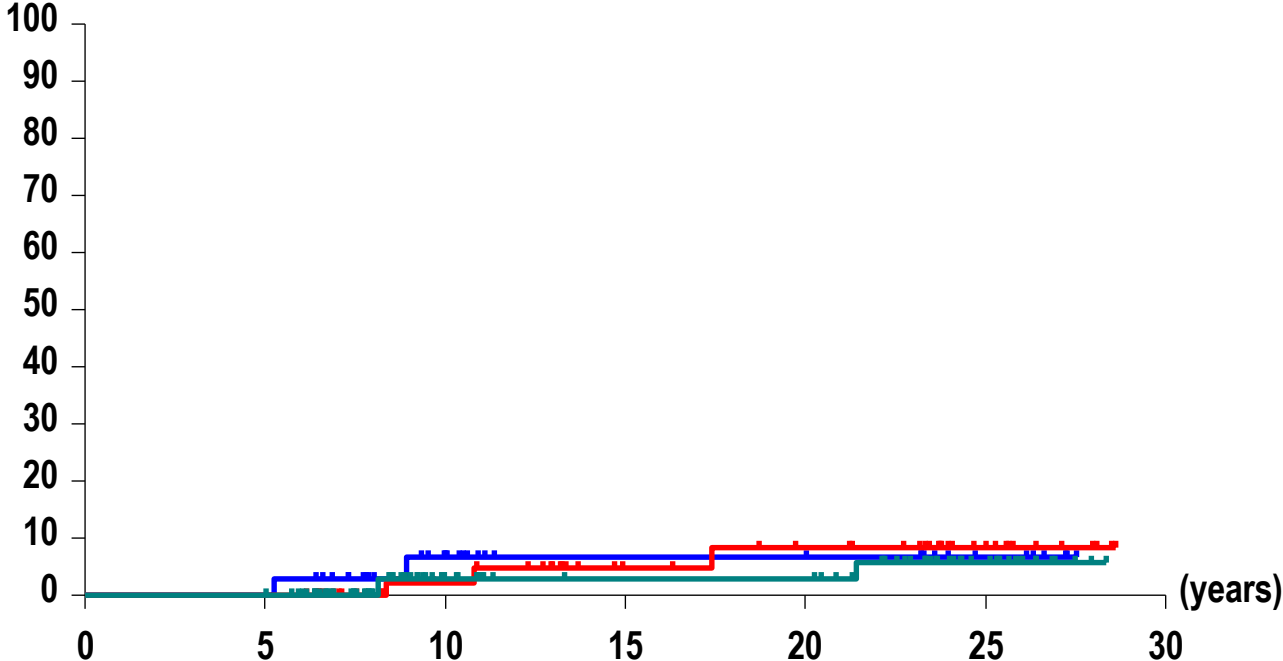
O	N	Number of patients at risk :						Trt planned
5	7	2	2	2	2	1	— ICT2	
3	11	9	8	7	5	4	— Auto-BMT	
8	18	10	8	7	7	5	— Allo-BMT	

Supplemental Figure 2 C.



O	N	Number of patients at risk :					Trt planned
80	117	31	18	10	10	5	— ICT2
68	119	53	38	26	22	10	— Auto-BMT
81	168	90	45	37	37	15	— Allo-BMT

Supplemental Figure 2 D.



O	N	Number of patients at risk :						Trt planned
2	35	35	21	13	13	6	— ICT2	
3	56	56	39	27	23	11	— Auto-BMT	
3	90	90	45	37	37	15	— Allo-BMT	