

## The prevalence of extramedullary acute myeloid leukemia detected by <sup>18</sup>F-FDG-PET/CT: final results from the prospective PETAML trial

Friedrich Stölzel,<sup>1</sup> Tors Lür,<sup>1</sup> Steffen Löck,<sup>2</sup> Stefani Parmentier,<sup>3</sup> Friederike Kuithan,<sup>4</sup> Michael Kramer,<sup>1</sup> Nael S. Alakel,<sup>1</sup> Katja Sockel,<sup>1</sup> Franziska Taube,<sup>1</sup> Jan M. Middeke,<sup>1</sup> Johannes Schetelig,<sup>1</sup> Christoph Röllig,<sup>1</sup> Tobias Paulus,<sup>5</sup> Jörg Kotzerke,<sup>6</sup> Gerhard Ehninger,<sup>1</sup> Martin Bornhäuser,<sup>1,7,8</sup> Markus Schaich<sup>3#</sup> and Klaus Zoepfel<sup>6#</sup>

<sup>1</sup>Department of Internal Medicine I, University Hospital Carl Gustav Carus Dresden, Technische Universität Dresden, Dresden, Germany; <sup>2</sup>OncoRay - National Center for Radiation Research in Oncology, University Hospital Carl Gustav Carus, Technische Universität Dresden, Helmholtz Zentrum, Dresden Rossendorf, Germany; <sup>3</sup>Department of Haematology and Oncology, Rems-Murr-Hospital, Winnenden, Germany; <sup>4</sup>Department of Pathology, University Hospital Carl Gustav Carus Dresden, Technische Universität Dresden, Dresden, Germany; <sup>5</sup>Department of Radiology, Städtisches Klinikum Dresden, Dresden, Germany; <sup>6</sup>Department of Nuclear Medicine, University Hospital Carl Gustav Carus, Technische Universität Dresden, Dresden, Germany; <sup>7</sup>National Center for Tumor Diseases NCT, Partner site Dresden, Dresden, Germany; <sup>8</sup>Department of Haematological Medicine, The Rayne Institute, King's College London, London, UK

*#MS and KZ contributed equally as co-senior authors.*

©2020 Ferrata Storti Foundation. This is an open-access paper. doi:10.3324/haematol.2019.223032

Received: March 31, 2019.

Accepted: August 27, 2019.

Pre-published: August 29, 2019.

Correspondence: *FRIEDRICH STÖLZEL* - [friedrich.stoelzel@uniklinikum-dresden.de](mailto:friedrich.stoelzel@uniklinikum-dresden.de)

---

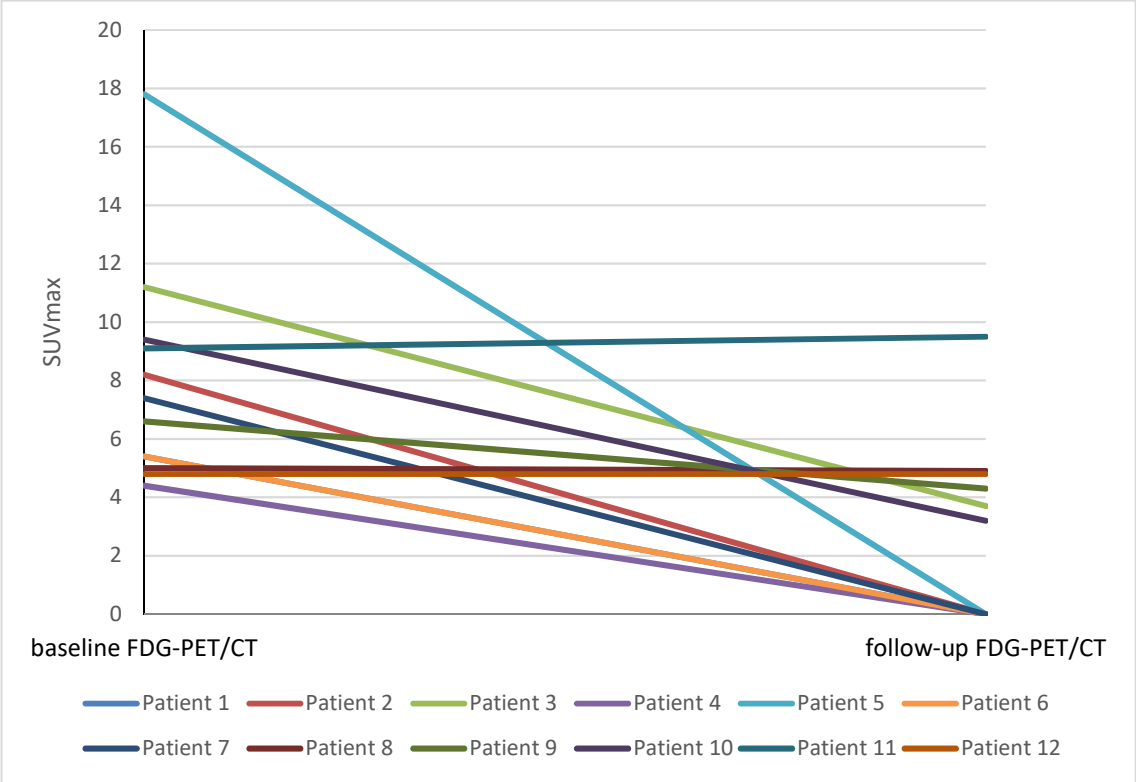
**Supplemental Table 1.** Patients undergoing biopsy for diagnosis of EM AML in both cohorts of the PETAML trial.

<b>PETAML PATIENT COHORT</b>		
n = 93	Baseline <sup>18</sup> F <sup>18</sup> FDG-PET/CT positive (n = 21)	Baseline <sup>18</sup> F <sup>18</sup> FDG-PET/CT negative (n=72)
No. of patients undergoing biopsy after baseline <sup>18</sup> F <sup>18</sup> FDG-PET/CT	12	3
No. of patients with confirmed EM AML in biopsy	10	3
No. of patients with different tumor (other than EM AML) in biopsy	2	0

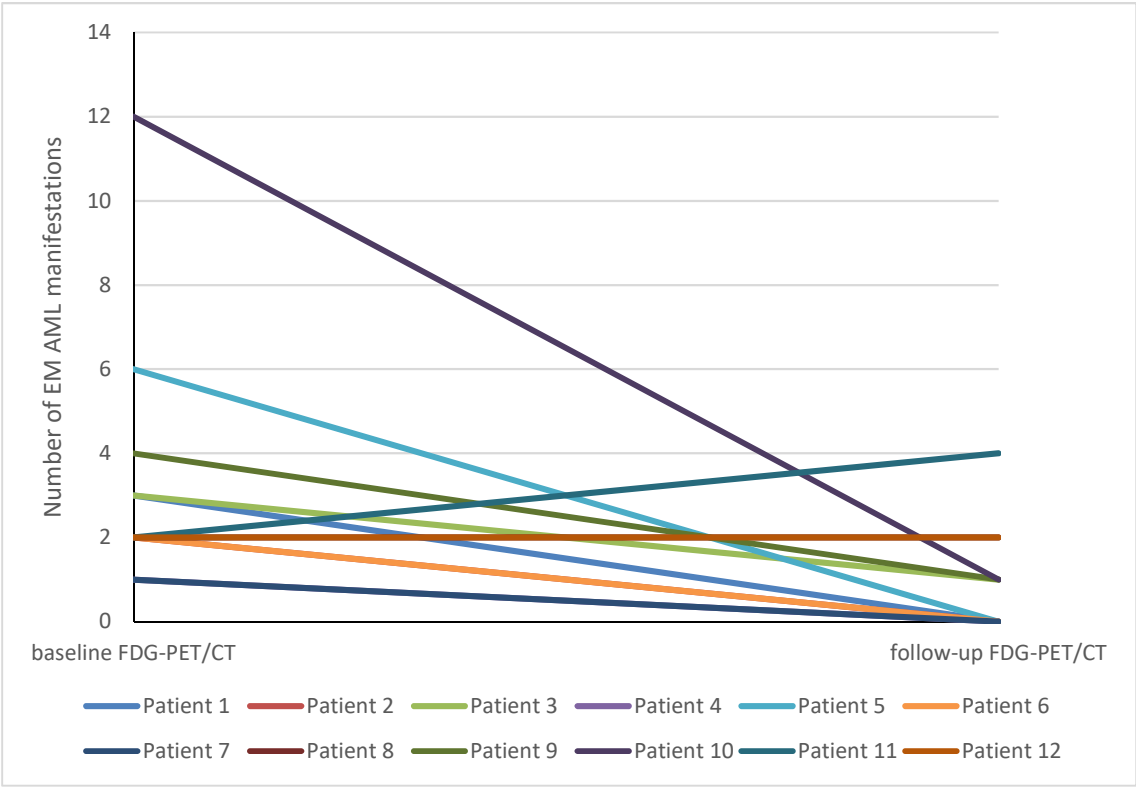
**Supplementary Table S2.** Patients undergoing biopsy for diagnosis of EM AML in both cohorts of the PETAML trial.

<b>PETAML PATIENT COHORT</b>		
<b>n = 93</b>	<b>Baseline <sup>18</sup>F-DG-PET/CT positive (n = 21)</b>	<b>Baseline <sup>18</sup>F-DG-PET/CT negative (n=72)</b>
No. of patients undergoing biopsy after baseline <sup>18</sup> F-DG-PET/CT	12	3
No. of patients with confirmed EM AML in biopsy	10	3
No. of patients with different tumor (other than EM AML) in biopsy	2	0

Supplemental Figure 1A.



Supplemental Figure 1B.



### ***Supplemental Figure 1A***

Metabolic activity (SUVmax) of extramedullary AML in patients with EM AML at baseline (and confirmed EM AML as per biopsy) and at follow-up  $^{18}\text{F}$ FDG-PET/CT. Note: Patient 1 and patient 6 have the same SUVmax for both time points which is the reason for exact superimposition of diagrams. Patients number 3, 9, 10, and 12 represent those patients who remained  $^{18}\text{F}$ FDG-PET/CT positive but achieved a CR in their bone marrow at the same time, respectively.

### ***Supplemental Figure 1B***

Number of extramedullary AML manifestations in patients with EM AML at baseline (and confirmed EM AML as per biopsy) and at follow-up  $^{18}\text{F}$ FDG-PET/CT. Note: three patients pairs have the same number of extramedullary AML manifestations for both time points which is the reason for exact superimposition of diagrams. Patients number 3, 9, 10, and 12 represent those patients who remained  $^{18}\text{F}$ FDG-PET/CT positive but achieved a CR in their bone marrow at the same time, respectively.