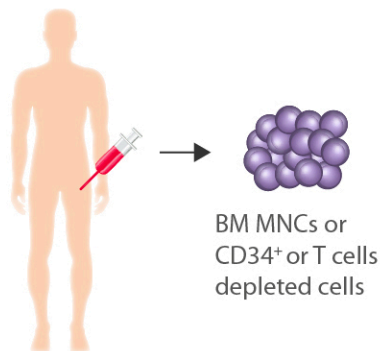


Principles of Myelodysplastic Syndrome (MDS) Patient-Derived Xenografts (PDX) models

MDS patient



Published models

Intravenous injection

Sublethal irradiation



or busulfan
d-1

d0

in vivo expansion of MDS cells

5-23 weeks

Intrafemoral injection



or busulfan
d-1

d0

in vivo expansion of MDS cells

8-20 weeks

Intrafemoral injection



or busulfan
d-1

d0

in vivo expansion of MDS cells

8-32 weeks

Intrahepatic injection
(newborn MISTRG)



or busulfan
d-1

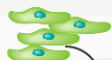
d0

in vivo expansion of MDS cells

12-31 weeks

Alternative models

Scaffolds
(Gelatin sponge)



d-3

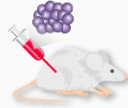
d-1

d0

in vivo expansion of MDS cells

12-18 weeks

Ossicles



w-8

d-1

d0

in vitro ossicle generation by MSC

in vivo expansion of MDS cells

? weeks