

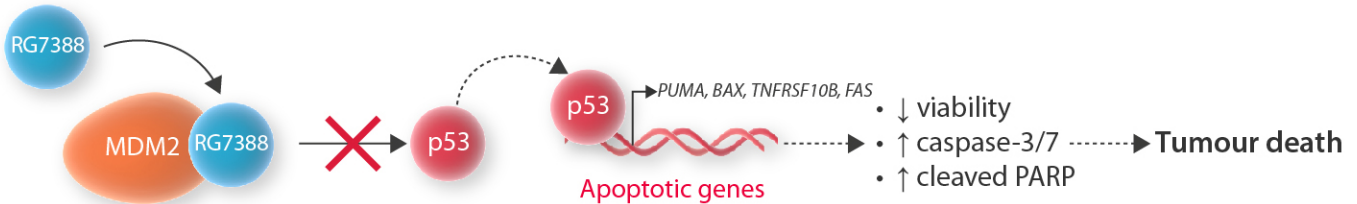
Testing the second-generation MDM2 inhibitor, RG7388, in patient-derived chronic lymphocytic leukemia cells and its effect on the induction of p53-transcriptional targets

Untreated normal and chronic lymphocytic leukemia (CLL) cells

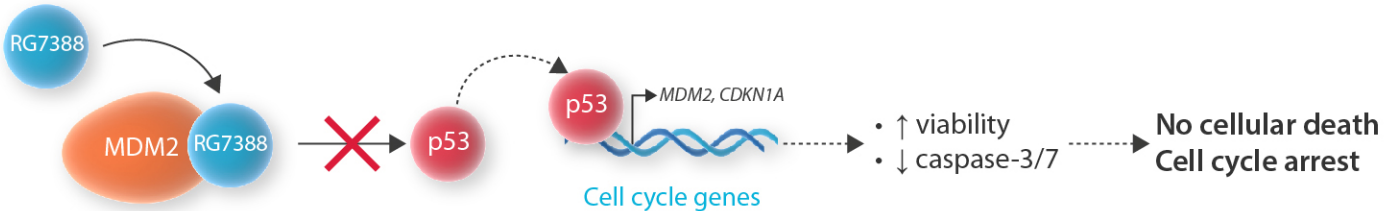


Treatment with RG7388

p53 functional-CLL cells



Normal blood progenitors



MDM2 inhibitor, RG7388, is a novel potential treatment option for patients with p53-functional CLL