

**Autoimmunity associated with Erdheim-Chester disease improves with BRAF/MEK inhibitors**

Anais Roeser,<sup>1</sup> Fleur Cohen-Aubart,<sup>1</sup> Paul Breillat,<sup>1</sup> Makoto Miyara,<sup>2</sup> Jean-François Emile,<sup>3</sup> Frédéric Charlotte,<sup>4</sup> Jean Donadieu,<sup>5</sup> Zahir Amoura<sup>1</sup> and Julien Haroche<sup>1</sup>

<sup>1</sup>Sorbonne Université, Assistance Publique Hôpitaux de Paris, Hôpital de la Pitié-Salpêtrière, Service de Médecine Interne 2, Centre National de Référence Maladies Systémiques Rares et Histiocytoses, Paris-75013; <sup>2</sup>Sorbonne Université, Assistance Publique Hôpitaux de Paris, Hôpital de la Pitié-Salpêtrière, Département d'immunochimie, Paris-75013; <sup>3</sup>EA4340, Université Versailles-Saint Quentin, Assistance Publique Hôpitaux de Paris, Hôpital Ambroise Paré, Département de Pathologie, Boulogne-92100; <sup>4</sup>Sorbonne Université, Assistance Publique Hôpitaux de Paris, Hôpital de la Pitié-Salpêtrière, Service d'Anatomopathologie, Paris-75013 and <sup>5</sup>Assistance Publique Hôpitaux de Paris, Hôpital Trousseau, Service d'Hématologie Pédiatrique, Paris-75012, France

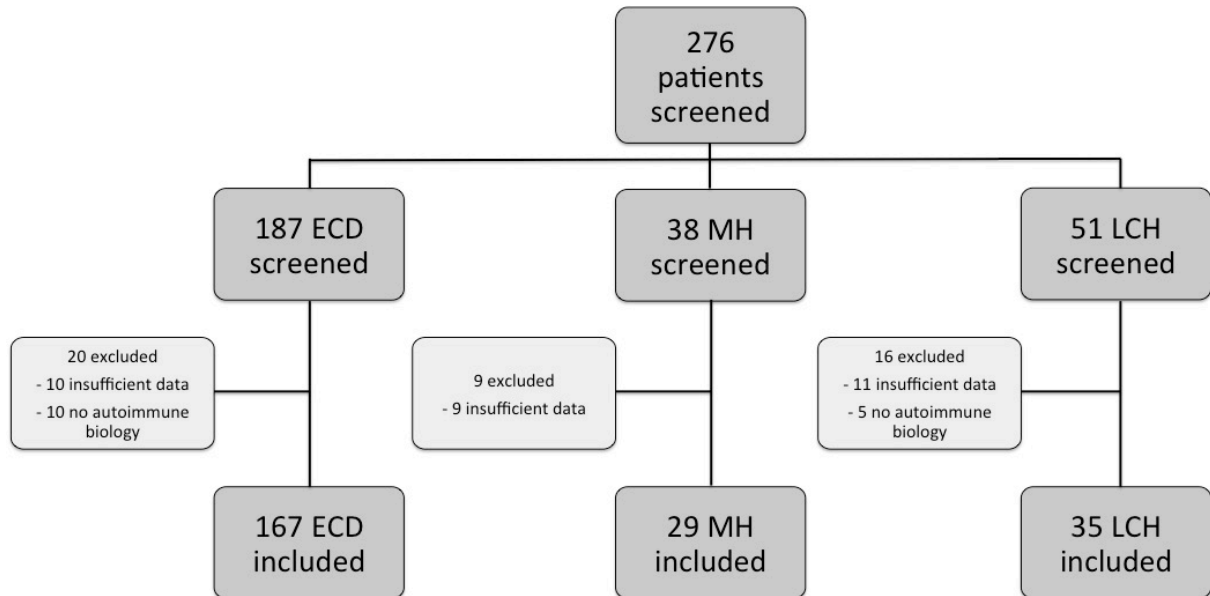
Correspondence: FLEUR COHEN AUBART - fleur.cohen@aphp.fr

doi:10.3324/haematol.2018.214007

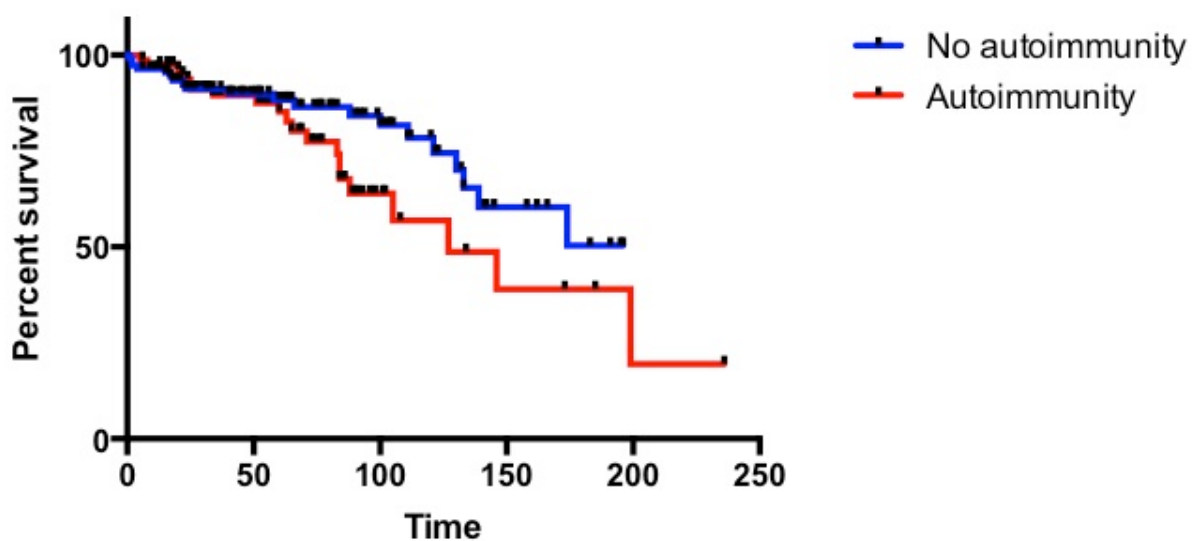
## Supplemental Figure legends

**Supplemental Figure S1.** Flow chart of the study. LCH Langerhans cell histiocytosis.

ECD Erdheim-Chester disease. MH Mixed histiocytosis.



**Supplemental Figure S2.** Survival curve in Erdheim-Chester disease patients with and without autoimmunity.



---

Addison's disease  
Antiphospholipid syndrome  
Autoimmune bullous diseases (pemphigus, bullous pemphigoid)  
Autoimmune haemolytic anaemia  
Autoimmune hepatitis  
Coeliac disease  
Immunologic thrombopenic purpura  
Inflammatory Myositis  
Large vessels vasculitis (Takayasu arteritis and Giant cell arteritis)  
Multiple sclerosis  
Necrotizing vasculitis  
Myasthenia gravis  
Pernicious anemia  
Polymyalgia rheumatica  
Primary biliary cholangitis  
Rheumatoid arthritis  
Sjögren syndrome  
Systemic lupus erythematosus  
Systemic sclerosis  
Thyroiditis  
Type 1 diabetes  
Vitiligo

---

**Supplemental Table S1. List of autoimmune or inflammatory conditions that were searched in all patients**