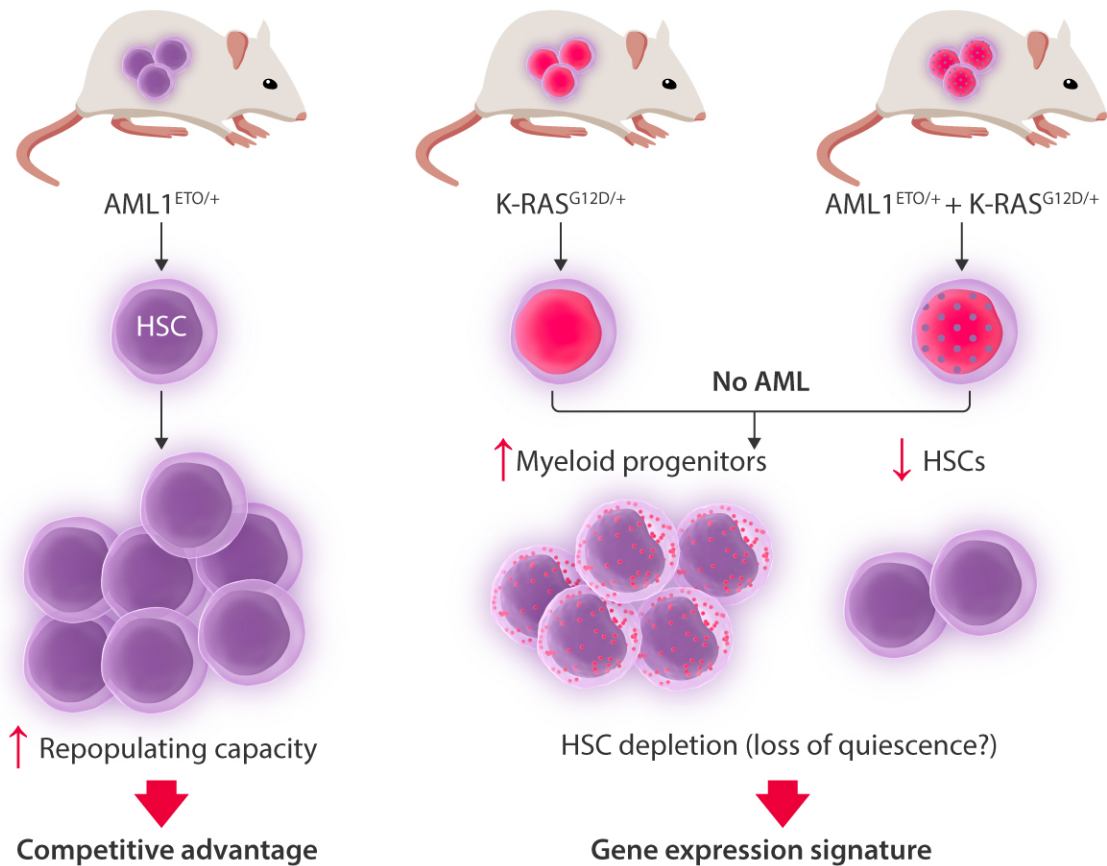


Evaluation of the effects of Aml1-ETO and K-RasG12D mutations, either individually or combined, on murine preleukemic hematopoietic stem cells (HSCs)



- In absence of activated K-Ras, Aml1-ETO-expressing HSCs conferred a competitive advantage
- The presence of K-Ras led to loss of both phenotypic and functional Aml1-ETO-expressing HSCs