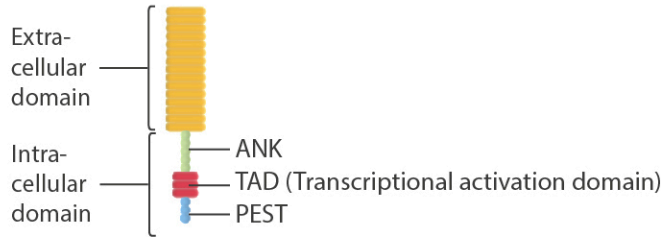
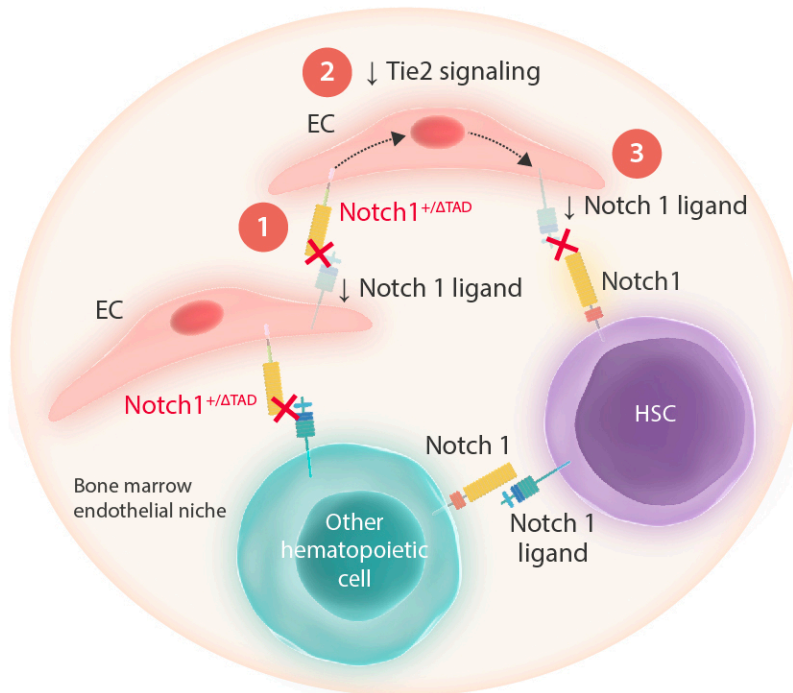
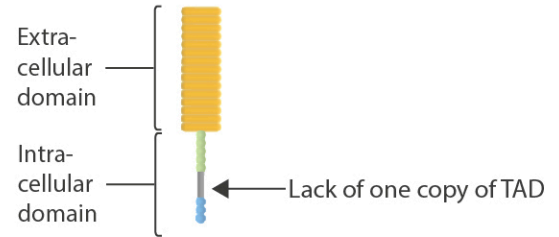


Crucial role for TAD-regulated Notch activity in mediating endothelial cell survival and promoting recovery of hematopoiesis following chemotherapeutic stress

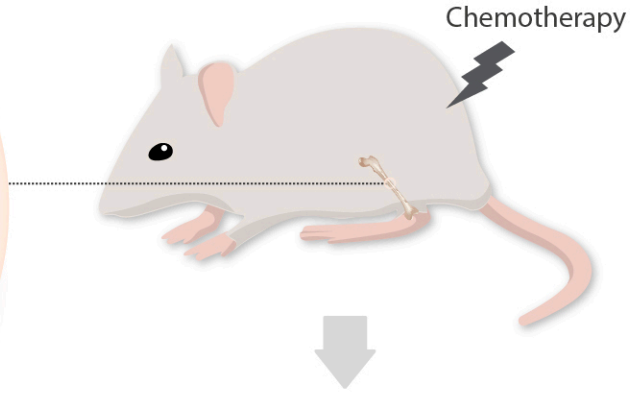
Notch1 receptor



Notch1^{+ΔTAD} receptor



Notch1^{+ΔTAD} hypomorphic model system



- ↑ apoptosis
- ↓ regeneration of the bone marrow niche