

Analysis of the evolutionary patterns leading to relapse in newly diagnosed multiple myeloma patients

56 Newly diagnosed multiple myeloma patients, relapsing within 30 months of maintenance randomisation

30 Lenalidomide maintenance

26 Observation

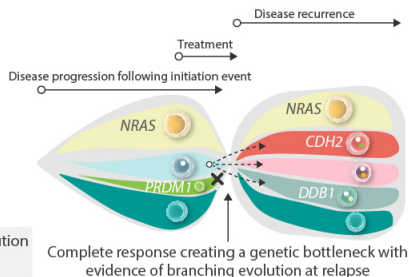


Median time from trial entry to relapse

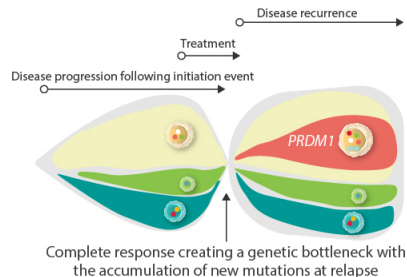
19 months

Evolutionary patterns seen leading to relapse

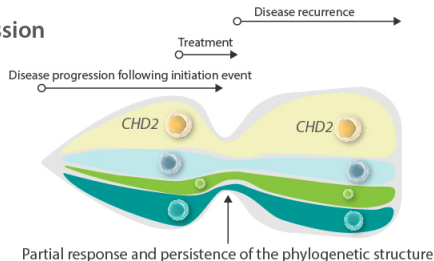
Branching
(66%, 37/56)



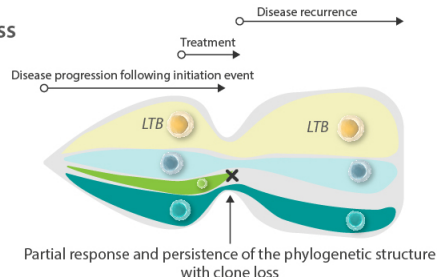
Linear
(20%, 11/56)



Stable progression
(12.5%, 7/56)



Stable with loss
(1.8%, 1/56)



No significant impact of induction or maintenance lenalidomide on the evolutionary pattern seen at relapse