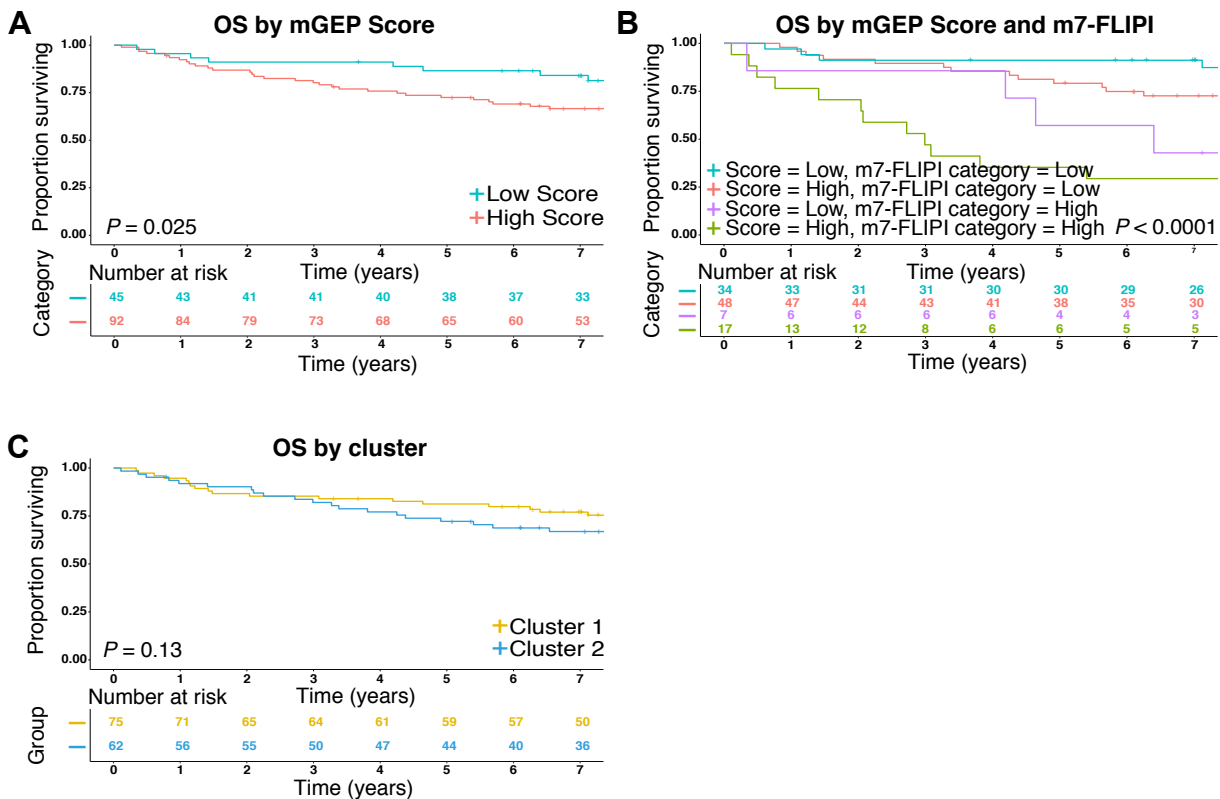


Convergence of risk prediction models in follicular lymphoma

Anjali Silva,¹ Sleiman Bassim,¹ Clémentine Sarkozy,² Anja Mottok,³ Tracy Lackraj,⁴ Vindi Jurinovic,^{4,5} Marianne Brodtkorb,⁶ Ole Christian Lingjaerde,⁶ Laurie H. Sehn,² Randy D. Gascoyne,² Oliver Weigert,⁴ Christian Steidl² and Robert Kridel¹

¹Princess Margaret Cancer Centre - University Health Network, Toronto, ON, Canada; ²Centre for Lymphoid Cancer, BC Cancer Agency, Vancouver, BC, Canada; ³Institute of Human Genetics, Ulm University and Ulm University Medical Center, Germany; ⁴Department of Medicine III, University Hospital, Ludwig Maximilians University Munich, Germany; ⁵Institute for Medical Information Processing, Biometry and Epidemiology, Ludwig Maximilians University Munich, Germany and ⁶Centre for Cancer Biomedicine, Oslo University Hospital, Norway

*Correspondence: ROBERT KRIDEL. robert.kridel@uhn.ca
doi:10.3324/haematol.2018.209031*



Supplemental Figure 1. Overall survival (OS) by mGEP Score, clusters and both mGEP Score and m7-FLIPI. (A) OS by mGEP Score in our cohort. Five-year OS was 72% vs. 87% in patients with high and low mGEP Score, respectively. (B) OS by mGEP Score and m7-FLIPI in our cohort. Five-year OS was 35% in patients with high mGEP Score and high risk m7-FLIPI. (C) OS by cluster in our cohort. Five-year OS was 72% vs. 81% in patients with Cluster 2 and Cluster 1, respectively.

Supplemental Table 1: Association of individual FLIPI factors with clusters.

	N (%)			P
	Evaluable	Cluster 1	Cluster 2	
Age ≤ 60	137	32 (43%)	34 (55%)	0.21
Age > 60		43 (57%)	28 (45%)	
Age continuous	137	75 (100%)	62 (100%)	0.03
Hemoglobin ≥ 120g/l	130	59 (83%)	45 (76%)	0.45
Hemoglobin < 120g/l		12 (17%)	14 (24%)	
LDH normal	130	59 (83%)	45 (76%)	0.45
LDH elevated		12 (17%)	14 (24%)	
# of nodal sites ≤ 4	135	17 (23%)	15 (25%)	0.99
# of nodal sites > 4		57 (77%)	46 (75%)	
# of nodal continuous	135	74 (100%)	61 (100%)	0.96
Stage I, II	137	8 (11%)	6 (10%)	1
Stage III, IV		67 (89%)	56 (90%)	

LDH, lactate dehydrogenase.