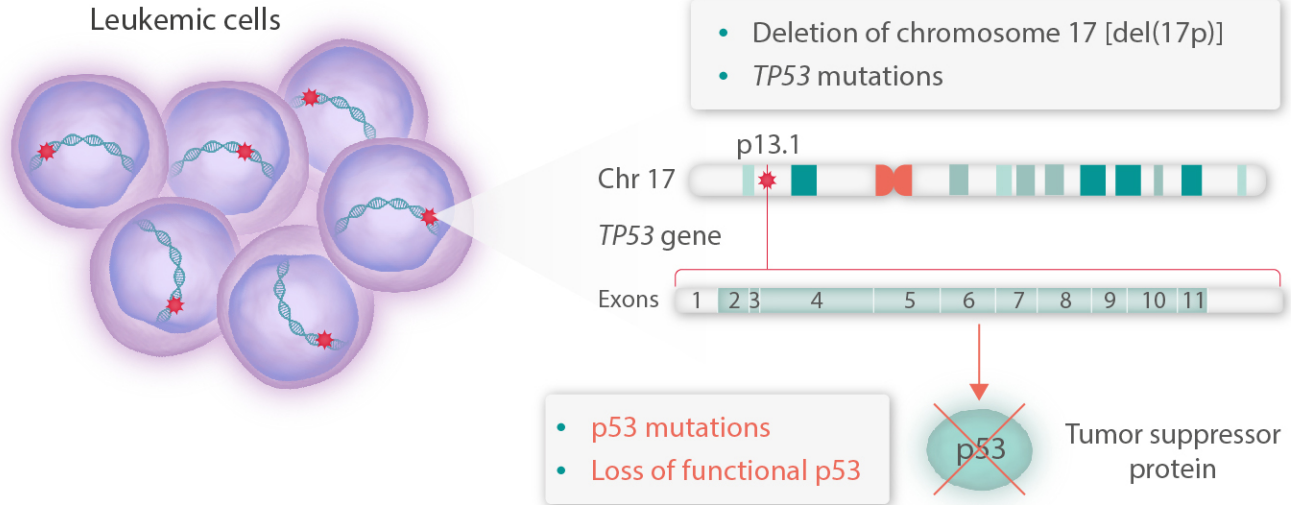


Clinical implications of improved diagnostics of TP53 in chronic lymphocytic leukemia

TP53 aberrations



TP53 aberrations

- Strong negative prognostic and predictive markers guiding treatment decisions in CLL
- Associated with markedly decreased survival
- Associated with impaired response to chemoimmunotherapy

Diagnostic techniques

- Fluorescence in situ hybridization (FISH)
- Sanger sequencing
- Next generation sequencing (NGS)
- Genomic arrays

Therapies

- Ibrutinib (BTK inhibitor)
- Idelalisib (PI3K inhibitor)
- Venetoclax (BH3 mimetic of BCL2 inhibitor)