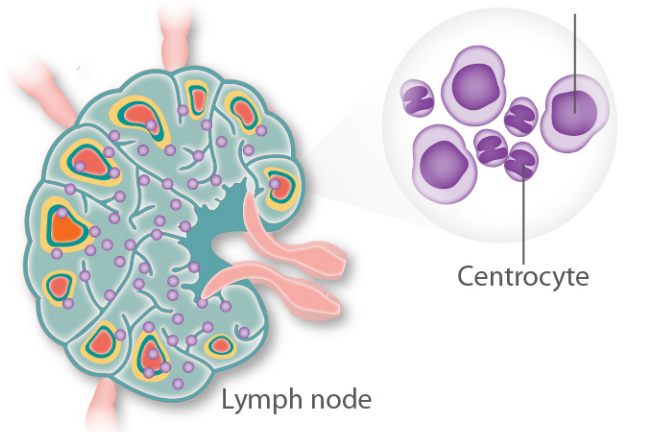
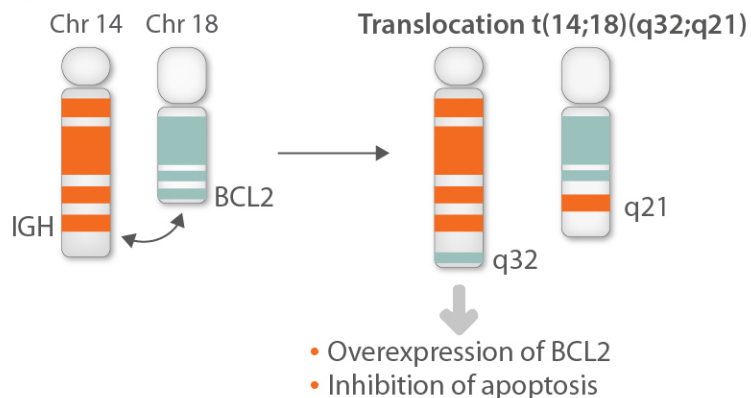


# A comprehensive analysis of a well-defined set of follicular lymphoma subtypes to obtain detailed insights into disease progression

## Follicular lymphoma (FL)



## Genetic mutation (in ~85% of FL)



| Grade    |                | FL1/FL2        | FL3A            | FL3B            | DLBCL<br>FL3B   | DLBCL of<br>GCB-type |
|----------|----------------|----------------|-----------------|-----------------|-----------------|----------------------|
| <i>n</i> |                | FL1:12, FL2:10 | 16              | 6               | 9               | 45                   |
| FISH     | BCL2-Break (%) | 82             | 75              | 50              | 11 <sup>#</sup> | 30 <sup>#</sup>      |
|          | BCL6-Break (%) | 9              | 31              | 17              | 44 <sup>*</sup> | 34 <sup>*</sup>      |
|          | MYC-Break (%)  | 5              | 6               | 17              | 22              | 9                    |
| IHC      | CD10 (%)       | 62             | 67              | 100             | 57              | 33 <sup>*</sup>      |
|          | IRF4/MUM1 (%)  | 0              | 50 <sup>#</sup> | 67 <sup>#</sup> | 33 <sup>*</sup> | 51 <sup>#</sup>      |
|          | Ki67 (%)       | 15             | 27              | 60 <sup>*</sup> | 88 <sup>#</sup> | 69 <sup>#</sup>      |
|          | BCL2 (%)       | 75             | 80              | 50              | 71              | 56                   |
|          | BCL6 (%)       | 88             | 92              | 100             | 71              | 87                   |

- Gene expression profiling clearly separated FL1/2 from both FL3A and FL3B

- Immunohistochemical and genetic profiles point to a closer relationship of FL1/2 and FL3A, and separating them from FL3B

\**p*<0.05 versus FL1/FL2; <sup>#</sup>*p*<0.001 versus FL1/FL2