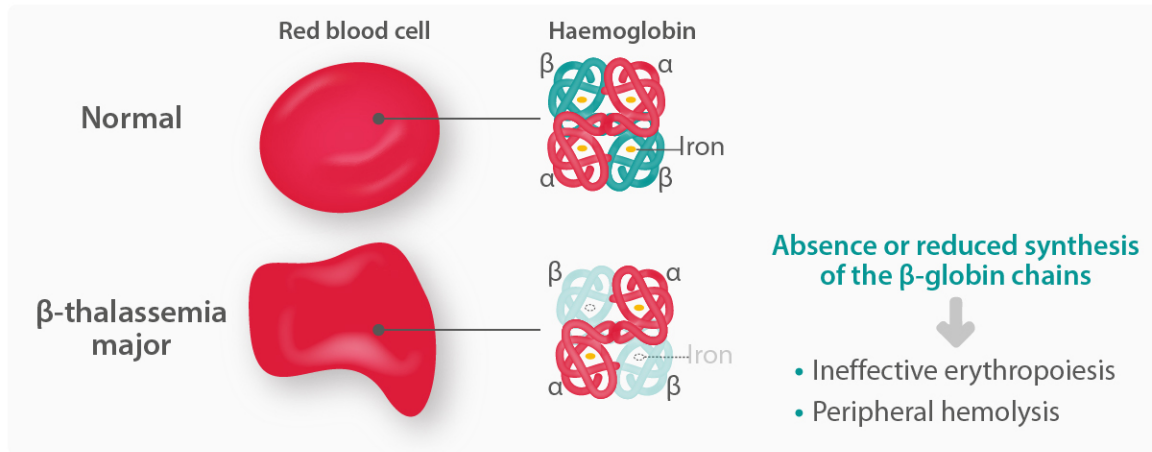


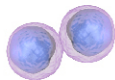
A French retrospective study to evaluate the long-term outcome after allogeneic hematopoietic stem cell transplantation in β -thalassemia major patients



France (1985-2012)

99

β -thalassemia major patients: 54 ♀, 45 ♂, median age 5.9 years



Allogeneic hematopoietic stem cell transplantation



Median follow-up

11.9 years

- Thyroid dysfunction 11%
- Diabetes 5%
- Heart failure 2%
- Hypogonadism 56% ♀, 14% ♂

Pubertal development

- ♀ 43/54 assessable for puberty
Normal puberty: younger ♀ (2.5 years) at transplantation
Delay puberty: older ♀ (8.7 years) at transplantation
- ♂ 29/45 assessable for puberty
Delay puberty: 18%