

Treatment to suppression of focal lesions on positron emission tomography-computed tomography is a therapeutic goal in newly diagnosed multiple myeloma

Faith E. Davies,¹ Adam Rosenthal,² Leo Rasche,¹ Nathan M. Petty,¹ James E. McDonald,³ James A. Ntambi,³ Doug M. Steward,¹ Susan B. Panozzo,¹ Frits van Rhee,¹ Maurizio Zangari,¹ Carolina D. Schinke,¹ Sharmilan Thanendrarajan,¹ Brian Walker,¹ Niels Weinhold,¹ Bart Barlogie,¹ Antje Hoering,² and Gareth J. Morgan¹

¹Myeloma Institute, University of Arkansas for Medical Sciences, Little Rock, AR; ²Cancer Research and Biostatistics, Seattle, WA and ³Department of Radiology, University of Arkansas for Medical Sciences, Little Rock, AR, USA

©2018 Ferrata Storti Foundation. This is an open-access paper. doi:10.3324/haematol.2017.177139

Received: July 21, 2017.

Accepted: March 8, 2018.

Pre-published: March 22, 2018.

Correspondence: fedavies@uams.edu

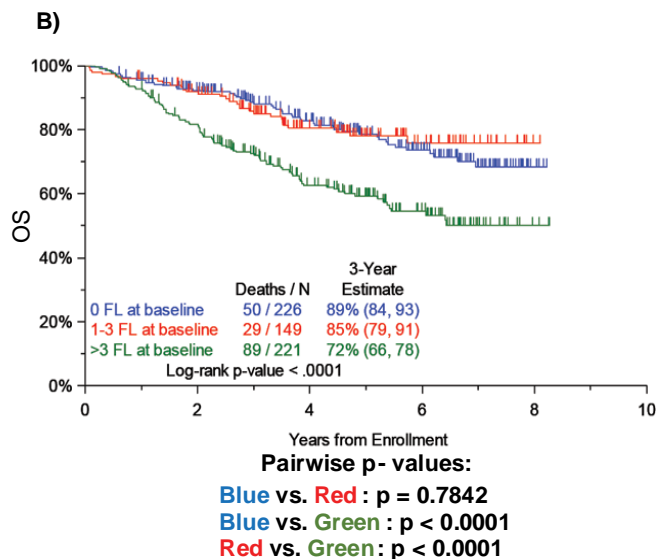
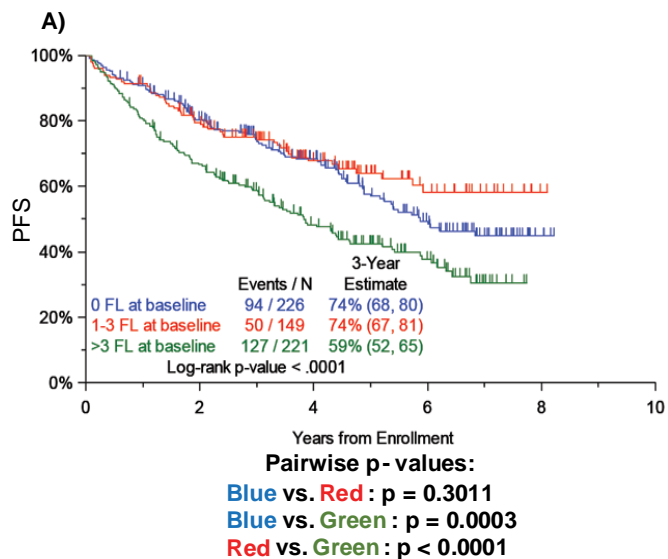


Figure S1. Survival data according to number of FFLs. PFS (A) and OS (B) of patients enrolled in TT4 and 6 by 0 FFLs, 1-3 FFLs, and >3 FFLs.

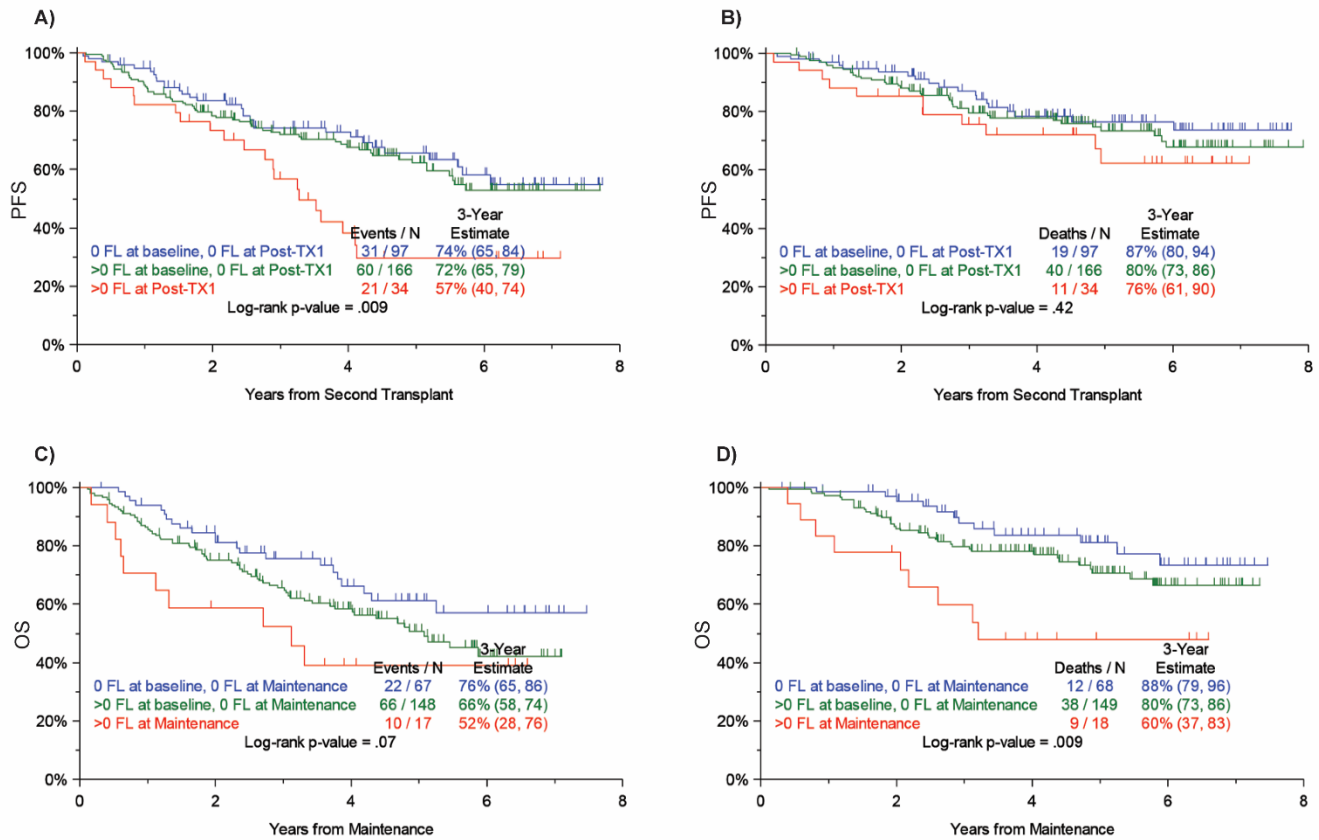


Figure S2. PFS (A) and OS (B) from post-first transplant. A significant difference was observed in PFS for patients with no FL at baseline and no FL after first transplant compared to those with lesions present at this timepoint ($p = 0.0035$). A significant difference was also observed in PFS for patients with resolution of FL compared to those with lesions present ($p = 0.0070$). PFS (C) and OS (D) from maintenance. A significant difference was observed in OS for patients with no FL at baseline and no FL at maintenance compared to those with lesions present at this timepoint ($p = 0.0020$). A significant difference was also observed in OS for patients with no resolution of FL compared to those with lesions present ($p = 0.0187$).

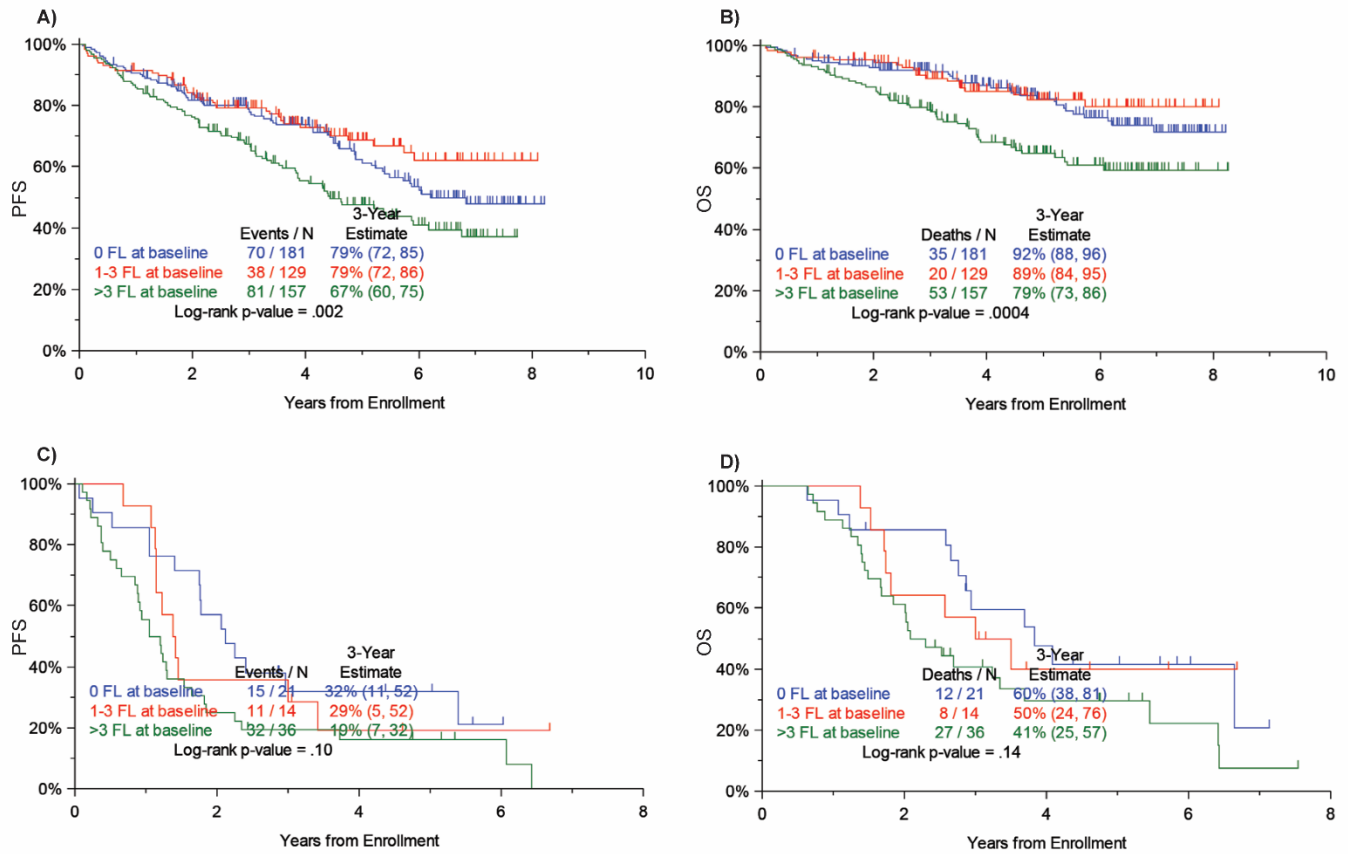


Figure S3. Survival data according to GEP risk status and FLs. PFS (A) and OS (B) of GEP70 low risk patients enrolled on TT4 and 6 by 0 FLs, 1-3 FLs, and >3 FLs. PFS (C) and OS (D) of GEP70 high risk patients enrolled on TT5+6 by 0 FLs, 1-3 FLs, and >3 FLs.

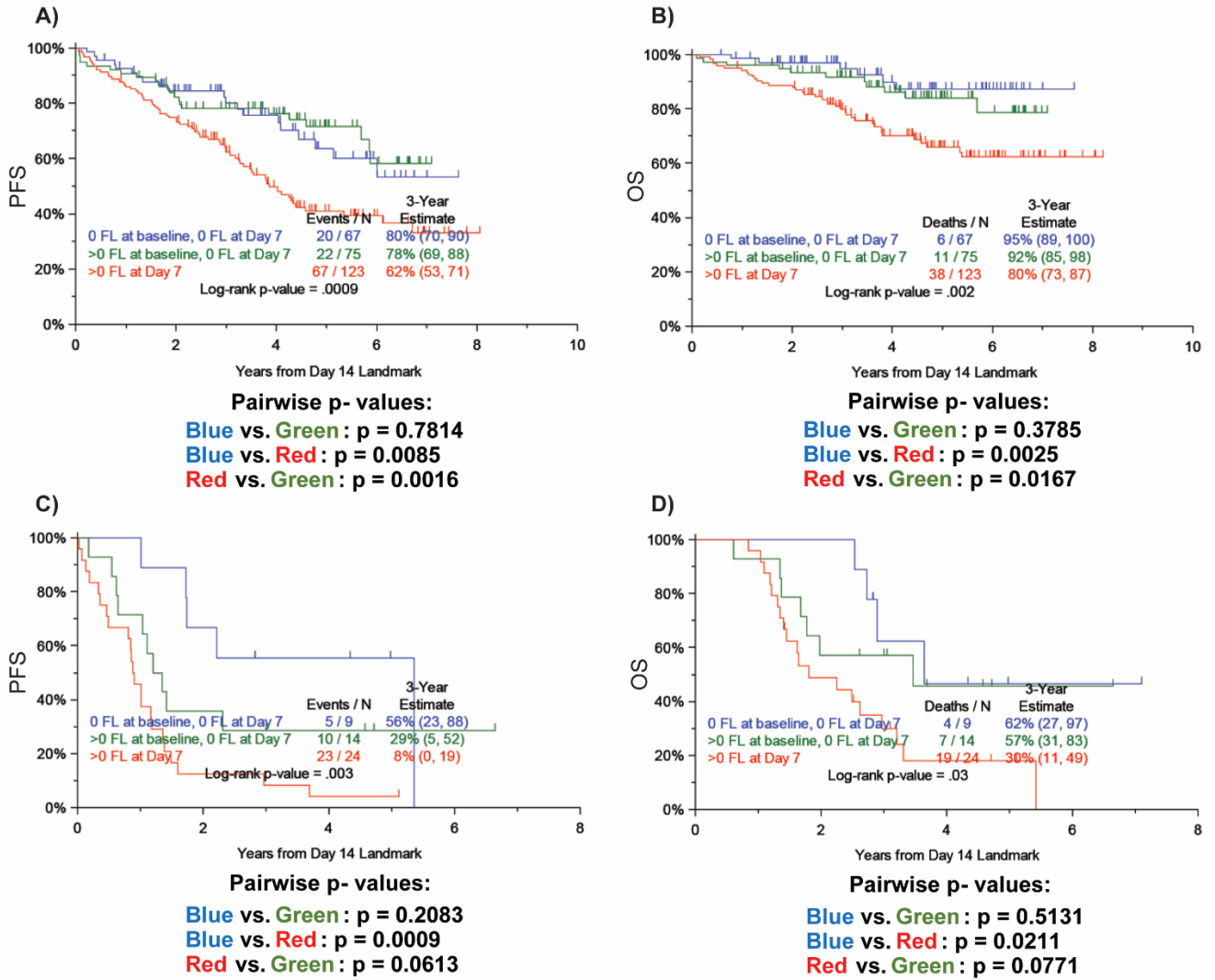


Figure S4. Survival status according to GEP risk status and FLs at day 7. PFS (A) and OS (B) for GEP70 low risk patients with 0 FLs, enrolled on TT4 and 6 by baseline and day 7. PFS (C) and OS (D) for High Risk patients with 0 FLs, enrolled on TT5+6 by baseline and Day 7.

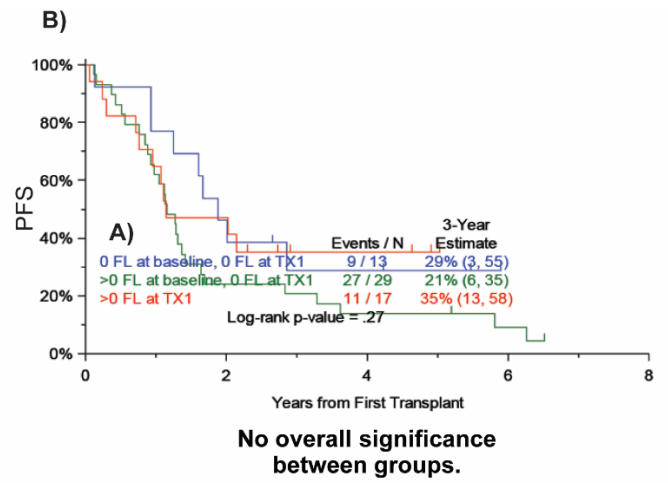
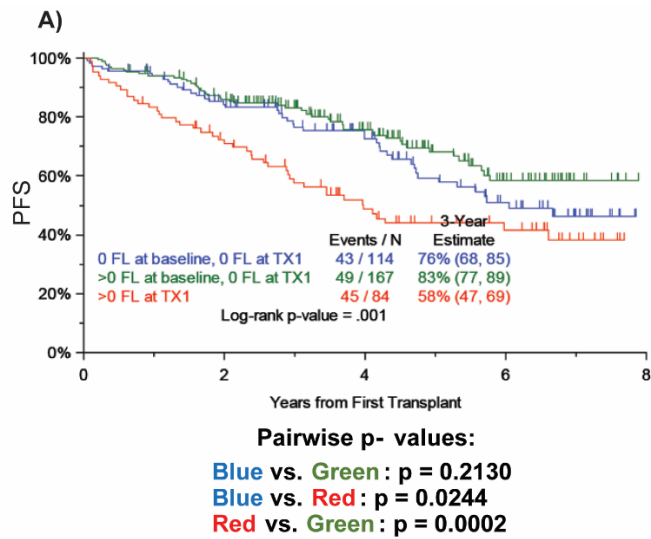


Figure S5. Survival status according to GEP risk status and FLs at the end of consolidation. PFS for GEP70 low risk (A) and GEP70 high risk (B) for patients with 0 FLs, enrolled on TT4 and 6 by baseline and end of induction.