

## Toxicities and outcomes of 616 ibrutinib-treated patients in the United States: a real-world analysis

Anthony R. Mato,<sup>1</sup> Chadhi Nabhan,<sup>2</sup> Meghan C. Thompson,<sup>1</sup> Nicole Lamanna,<sup>3</sup> Danielle M. Brander,<sup>4</sup> Brian Hill,<sup>5</sup> Christina Howlett,<sup>6,7</sup> Alan Skarbnik,<sup>7</sup> Bruce D. Cheson,<sup>8</sup> Clive Zent,<sup>9</sup> Jeffrey Pu,<sup>10</sup> Pavel Kiselev,<sup>11</sup> Andre Goy,<sup>7</sup> David Claxton,<sup>10</sup> Krista Isaac,<sup>12</sup> Kaitlin H. Kennard,<sup>1</sup> Colleen Timlin,<sup>1</sup> Daniel Landsburg,<sup>1</sup> Allison Winter,<sup>5</sup> Sunita D. Nasta,<sup>1</sup> Spencer H. Bachow,<sup>3</sup> Stephen J. Schuster,<sup>1</sup> Colleen Dorsey,<sup>1</sup> Jakub Svoboda,<sup>1</sup> Paul Barr<sup>13\*</sup> and Chaitra S. Ujjani<sup>8\*</sup>

<sup>1</sup>Hematology and Oncology, University of Pennsylvania, Philadelphia, PA; <sup>2</sup>Cardinal Health, Dublin, OH <sup>3</sup>Hematology/Oncology, Presbyterian/Columbia University Medical Center, New York, NY; <sup>4</sup>Hematology/Oncology, Duke University, Durham, NC; <sup>5</sup>Hematology and Medical Oncology, Cleveland Clinic, OH; <sup>6</sup>Pharmacy, Ernest Mario School of Pharmacy, New Brunswick, NY; <sup>7</sup>Hematology/Oncology, John Theurer Cancer Center, Hackensack, NY; <sup>8</sup>Hematology/Oncology, Georgetown University Hospital, Washington DC; <sup>9</sup>Hematology/Oncology, University of Rochester Medical Center, NY; <sup>10</sup>Hematology/Oncology, Penn State Milton S Hershey Medical Center, PA; <sup>11</sup>Lymphoma, Celgene Corp, Summit, NY; <sup>12</sup>Hematology/Oncology, Lankenau Hospital, Wynnewood, PA and <sup>13</sup>Division of Hematology and Oncology, University of Rochester, NY, USA

*\*Indicates shared last authorship*

©2018 Ferrata Storti Foundation. This is an open-access paper. doi:10.3324/haematol.2017.182907

Received: October 20, 2017.

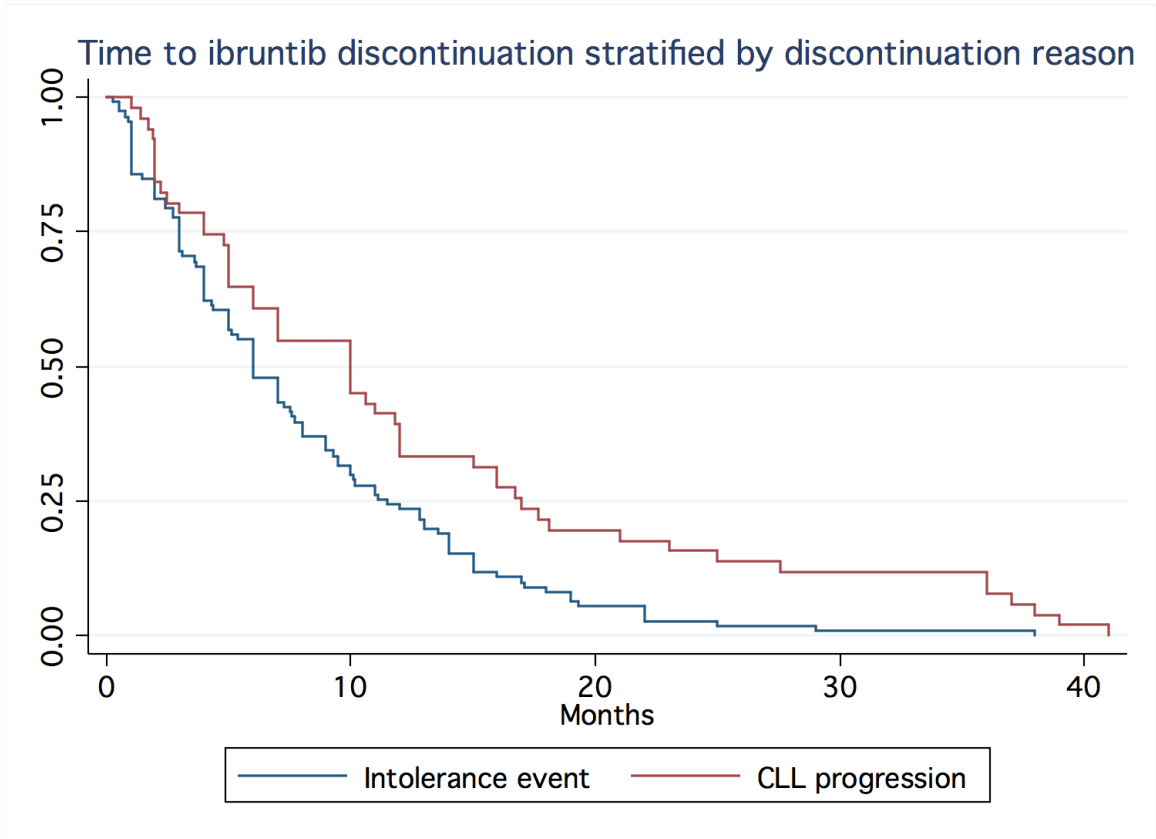
Accepted: January 26, 2018.

Pre-published: February 1, 2018.

Correspondence: amato@mskcc.org

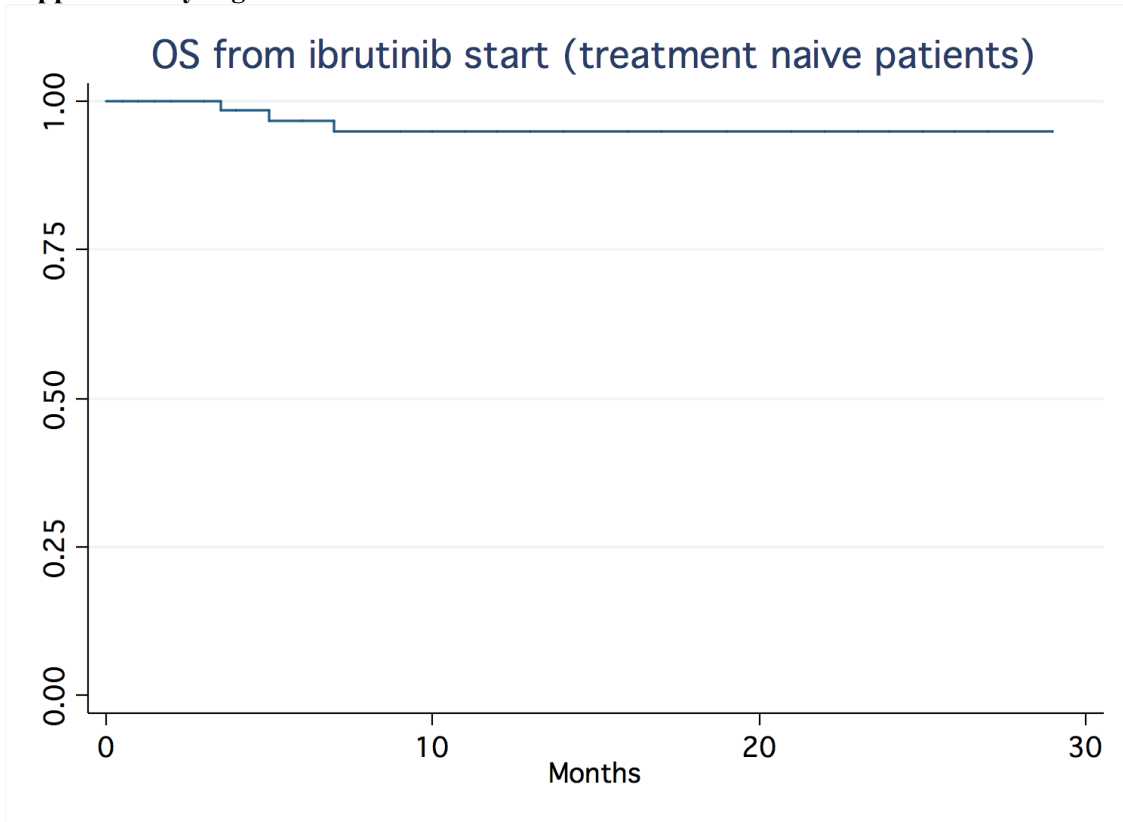
---

**Supplementary Figure 1**

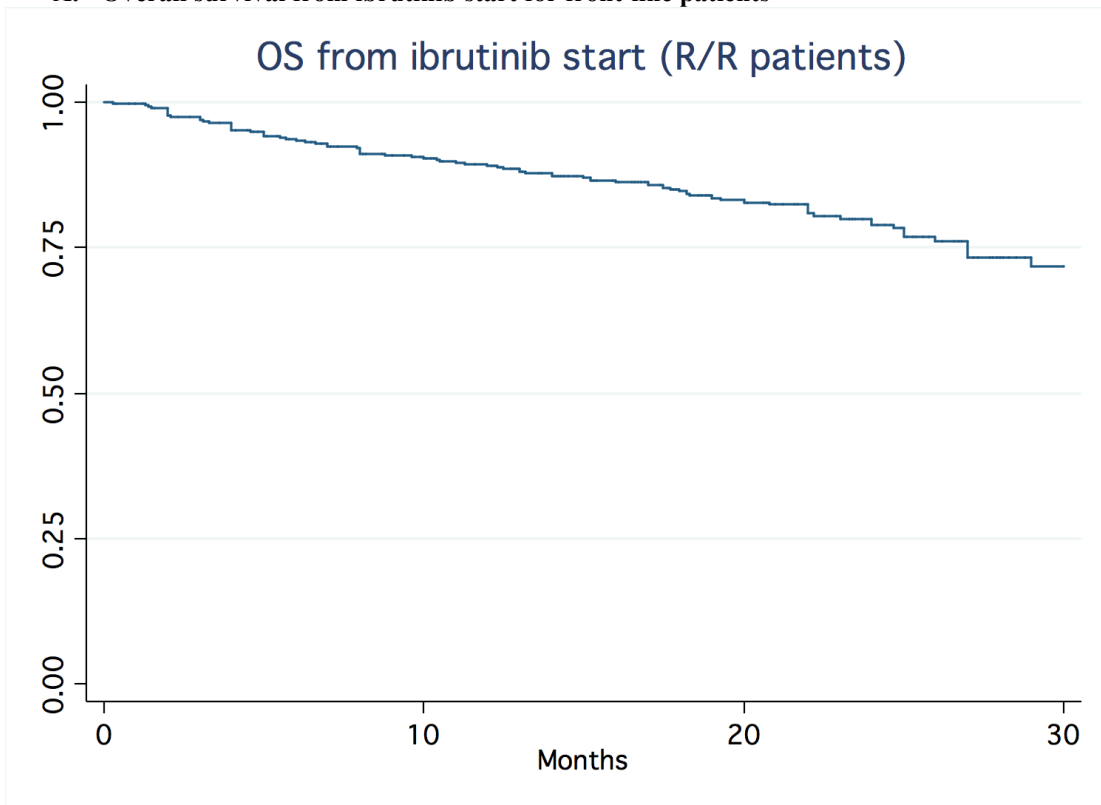


**Time to ibrutinib discontinuation stratified by discontinuation reason**

**Supplementary Figure 2**

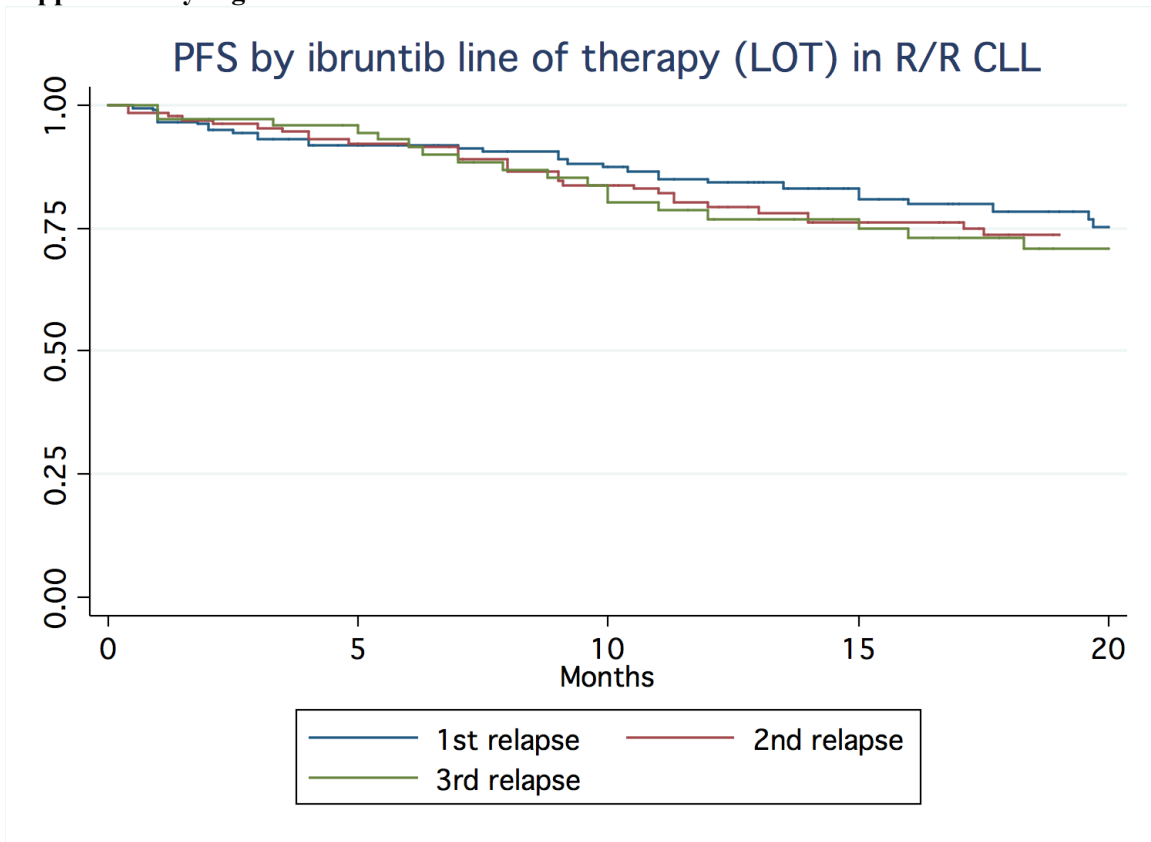


**A. Overall survival from ibrutinib start for front-line patients**



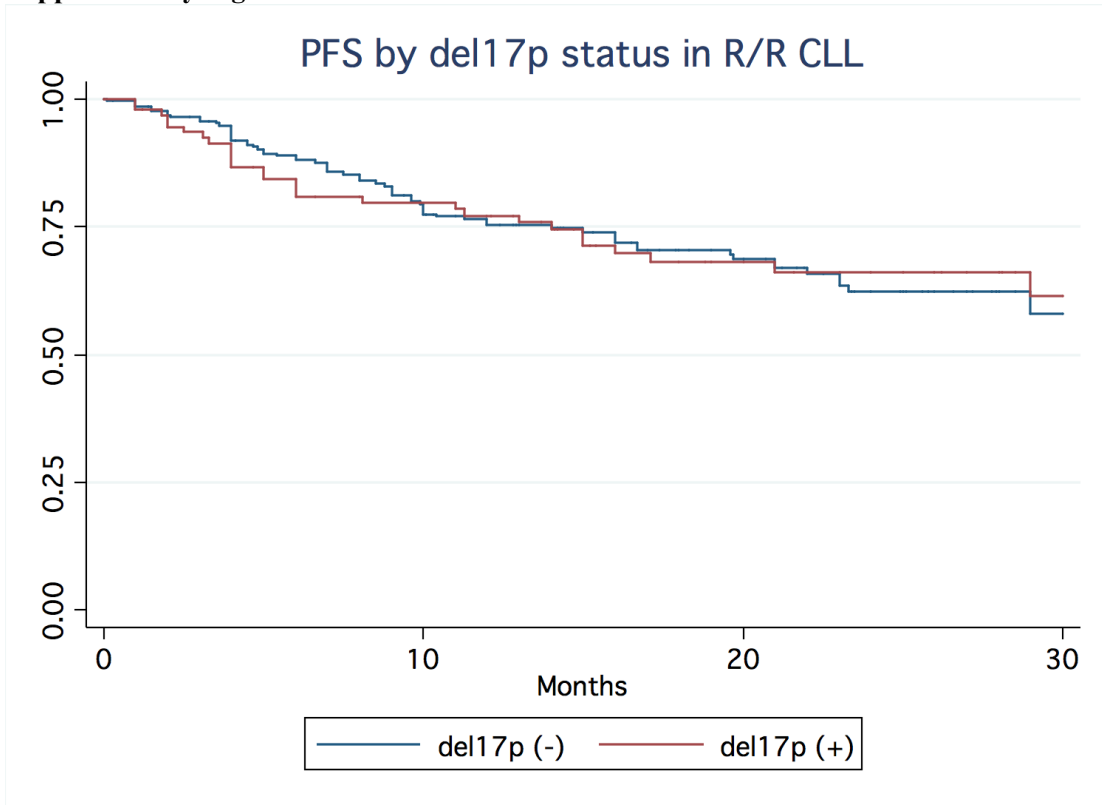
**B. Overall survival from ibrutinib start for relapsed/refractory patients**

Supplementary Figure 3

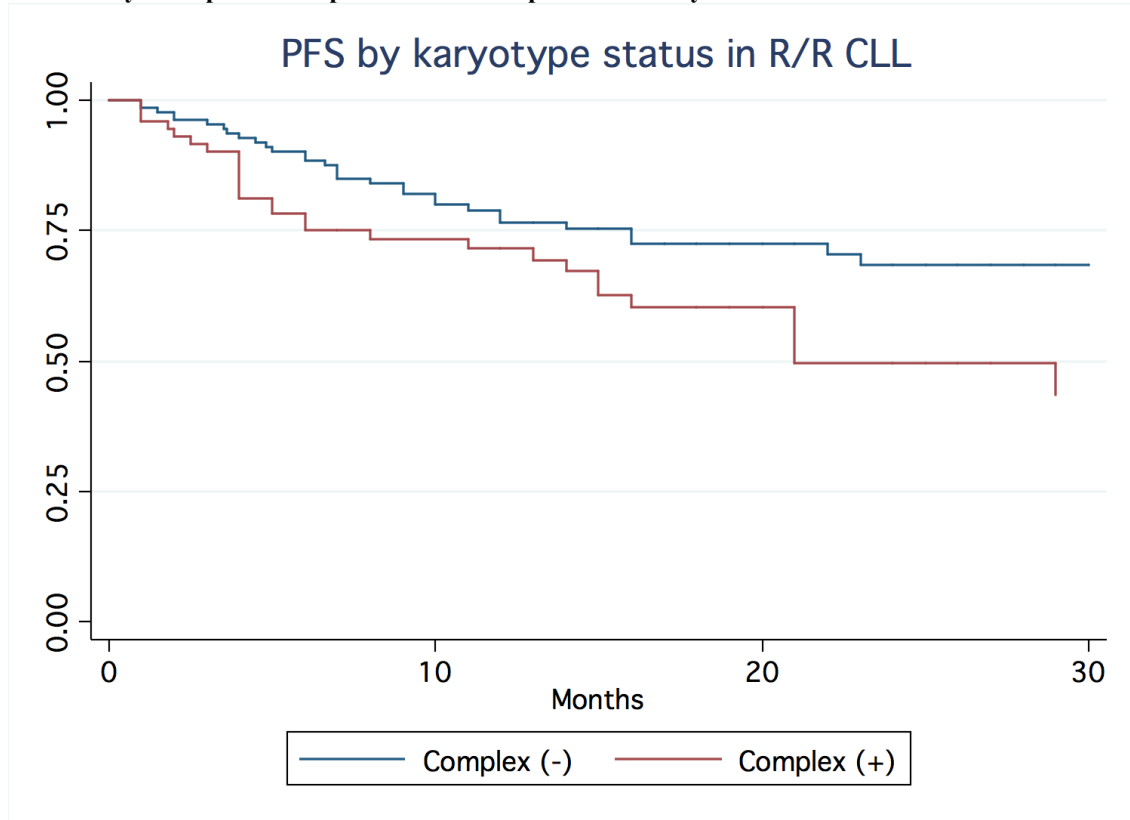


PFS by Line of Therapy at Relapse in Relapsed/Refractory CLL

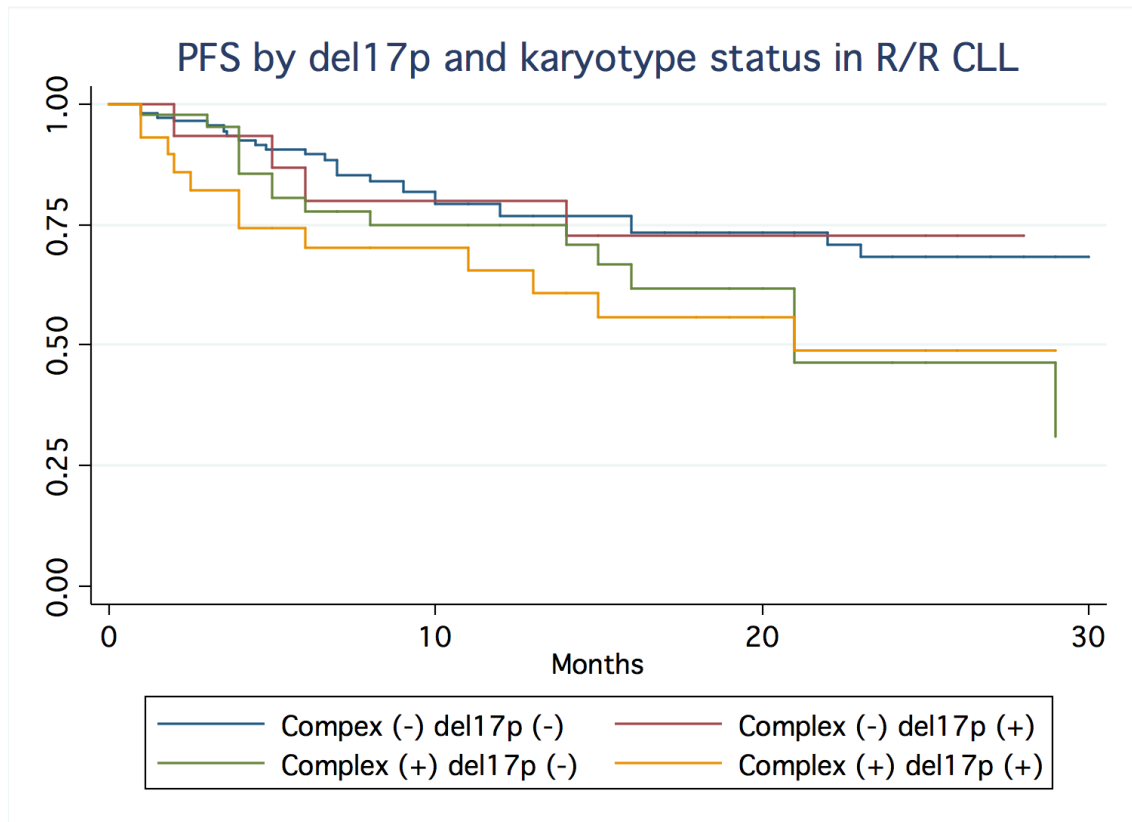
Supplementary Figure 4



A. PFS by del17p status in patients with relapsed/refractory CLL



B. PFS by karyotype status in patients with relapsed/refractory CLL



**C. PFS by del17p status and karyotype status in patients with relapsed/refractory CLL**