

Prevalence and characteristics of metabolic syndrome in adults from the French childhood leukemia survivors' cohort: a comparison with controls from the French population

Claire Oudin,^{1,2} Julie Berbis,² Yves Bertrand,³ Camille Vercasson,² Frédérique Thomas,⁴ Pascal Chastagner,⁵ Stéphane Ducassou,⁶ Justyna Kanold,⁷ Marie-Dominique Tabone,⁸ Catherine Paillard,⁹ Marilyne Poirée,¹⁰ Dominique Plantaz,¹¹ Jean-Hugues Dalle,¹² Virginie Gandemer,¹³ Sandrine Thouvenin,¹⁴ Nicolas Sirvent,¹⁵ Paul Saultier,¹ Sophie Béliard,¹⁶ Guy Leverger,⁸ André Baruchel,¹² Pascal Auquier,² Bruno Pannier⁴ and Gérard Michel^{1,2}

¹Department of Pediatric Hematology and Oncology, Timone Enfants Hospital and Aix-Marseille University, Marseille; ²Research Unit EA 3279 and Department of Public Health, Aix-Marseille University and Timone Hospital, Marseille; ³Department of Pediatric Hematology and Oncology, University Hospital of Lyon; ⁴Preventive and Clinical Investigation Centre, Paris; ⁵Department of Pediatric Onco-Haematology, Children's Hospital of Brabois, Vandoeuvre Les Nancy; ⁶Department of Pediatric Hematology and Oncology, University Hospital of Bordeaux; ⁷Department of Pediatric Hematology and Oncology, CIC Inserm 501, University Hospital of Clermont-Ferrand; ⁸Pediatric Hematology Department, Trousseau Hospital, Paris; ⁹Department of Pediatric Hematology-Oncology, University Hospital, Strasbourg; ¹⁰Pediatric Hematology and Oncology Department, University Hospital L'Archet, Nice; ¹¹Department of Pediatric Hematology-Oncology, University Hospital of Grenoble; ¹²Pediatric Hematology Department, Robert Debré Hospital, Paris; ¹³Department of Pediatric Hematology and Oncology, University Hospital of Rennes; ¹⁴Pediatric Hematology, University Hospital, Saint Etienne; ¹⁵Pediatric Hematology and Oncology Department, University Hospital, Montpellier and ¹⁶Department of Endocrinology and Nutrition, Timone Hospital, Marseille, France

©2018 Ferrata Storti Foundation. This is an open-access paper. doi:10.3324/haematol.2017.176123

Received: July 10, 2017.

Accepted: January 17, 2018.

Pre-published: January 19, 2018.

Correspondence: gmichel@ap-hm.fr

Supplemental methods:

Since 1980, in France, 80% of patients treated for acute leukemia have been included in the L.E.A. cohort.

- *Inclusion criteria in L.E.A.:*

1. Acute leukemia diagnosis;
2. Age <18 years at AL diagnosis;
3. Diagnosis from January 1980;
4. Treatment of acute leukemia in one of the LEA participating centers;
5. Residency in France.
6. Surviving over 12 months after allogeneic HSCT;
7. Signature of the LEA informed consent by the patient if over 18 or its legal representatives.

- *The L.E.A. medical visits:*

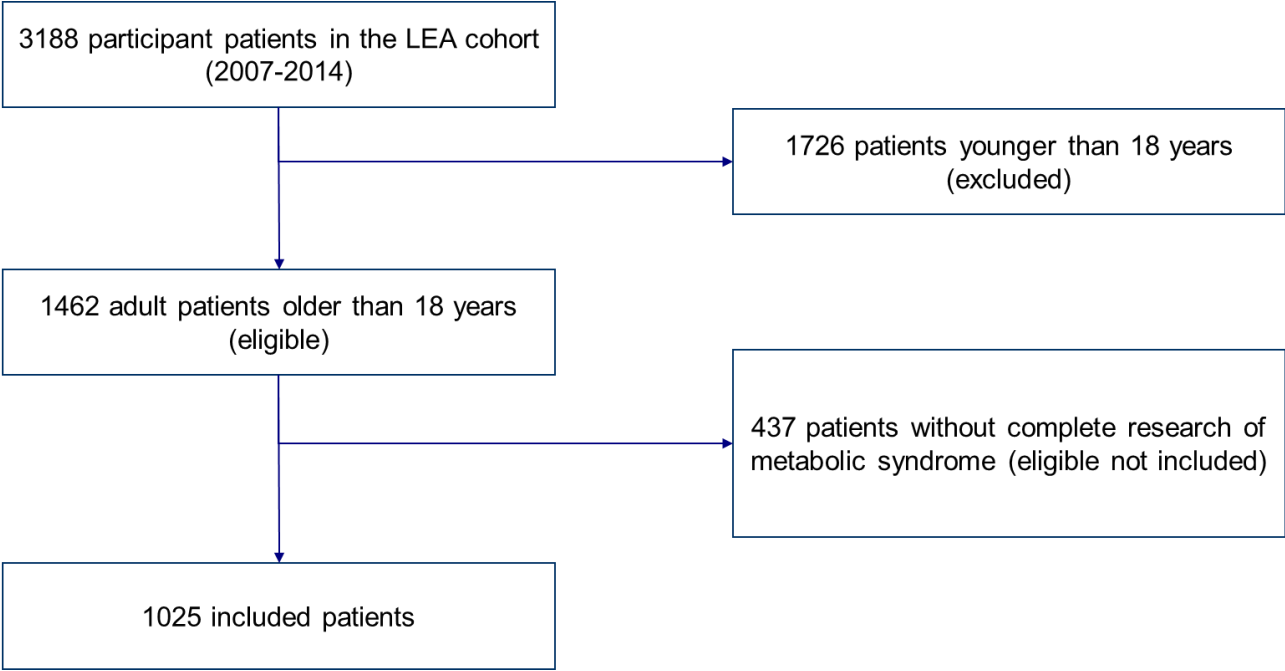
Data were collected during specific medical visits at predefined dates, the first appointment taking place one year after completion of chemotherapy or one year after hematopoietic stem cell transplantation. Subsequent appointments were every other year during a 10-year post-chemotherapy/post-transplantation follow-up period. After this 10-year period, visits occurred every four years.

- *Outcome measurement*

Blood pressure was measured with a sphygmomanometer at rest, and systematically double checked in case the patient presented high blood pressure.

Abdominal circumference was evaluated at midlength, halfway between the iliac crest and the bottom rib. Blood samples for fasting glucose, triglycerides and HDL-cholesterol were obtained after fasting overnight.

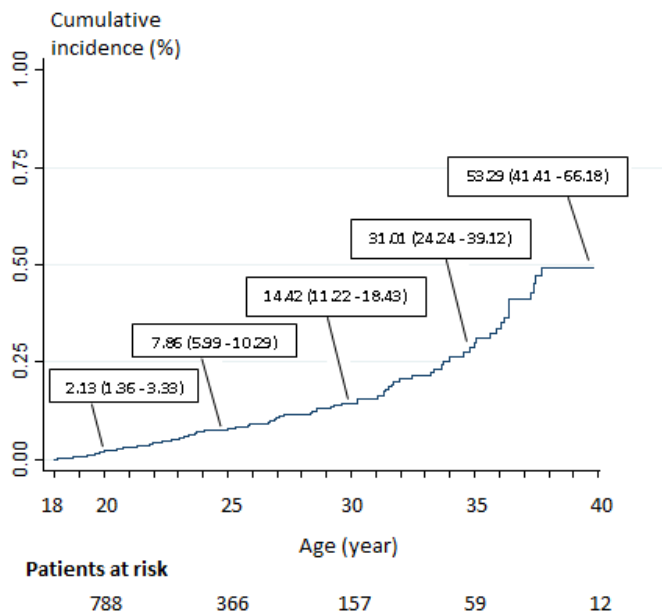
Supplemental figure



Flow chart: included patients from the L.E.A. cohort

Supplemental data

- Cumulative incidence of the Metabolic syndrome among L.E.A. patients



Cumulative incidence of metabolic syndrome in L.E.A. patients (n=1025) aged 18 and over (the metabolic syndrome was not systematically investigated under 18).

- *The L.E.A. study group*

Marseille: ALLOIN Anne-Lise, AUQUIER Pascal, BARLOGIS Vincent, BERBIS Julie, CHAMBOST Hervé, CURTILLET Catherine, ESMIOL Sophie, GALAMBRUN Claire, GARNIER Floriane, MICHEL Gérard, ORBICINI Delphine, OUDIN Claire, THURET Isabelle, VERCASSON Camille, VILLES Virginie,
Nancy: CHASTAGNER Pascal, CLEMENT Laurence, CONTET Audrey, FOUYSSAC Fanny, LEMELLE Irène, MANSUY Ludovic, PERNET Marjolaine, PERROT Aurore, PHULPIN Aurélie, POCHON Cécile, SCHMITT Claudine, SERRIER Caroline,
Nice: BELLMANN-ROQUEPLAN Françoise, DEVILLE Anne, HATHROUBI Chokri, LE MEIGNEN-DIOP Marion, MONPOUX Fabrice, POIREE Maryline, ROHRLICH Pierre-Simon, SOLER Christine,
Clermont-Ferrand: CHAMBON Fanny, DORE Eric, ISFAN Florentina, KANOLD Justyna, ROUEL Nadège,
Grenoble: ADJAOUD Dalila, ARMARI-ALLA Corinne, CACACE Sophie, PAGNIER Anne, PLANTAZ Dominique, SCHIFF Isabelle,
Lyon: BERTRAND Yves, GARNIER Nathalie, HALFON-DOMENECH Carine, HU Julie-Yi, KEBÄILI Kamila, RENARD Cécile,
Paris Trousseau: AUVRIGNON Anne, BOUAYAD AGHA Latéfa, DOLLFUS Catherine, DONADIEU Jean, FASOLA Sylvie, LANDMAN-PARKER Judith, LEVERGER Guy, PELLEGRINO Béatrice, PETIT Arnaud, TABONE Marie Dominique,
St Etienne: BERGER Claire, DAVID Audrey, ODIER Françoise, STEPHAN Jean Louis, THOUVENIN-DOULET Sandrine,
Rennes: BAYART Sophie, BONNEAU Jacinthe, CHAPPE Céline, GANDEMER Virginie, LAMOUR Anne-Marie, SOK-FEDELE Phaktra, TAQUE Sophie, TOUTAIN Fabienne,
Montpellier: HAOUY Stéphanie, MOPHAWE Ornellia, SAUMET Laure, SIRVENT Nicolas, SIRVENT Anne,
Paris St Louis – Robert Debré: BARUCHEL André, BRETHON Benoît, LEBLANC Thierry, MOUKOKO Marie-Noelle, RAY-LUNVEN Anne-France, AVRAN David, AZARNOUSH Saba, CUINET Aurélie, DALLE

Jean-Hugues, DUQUESNE Frédérique, FAHD Raymonda, LESCOEUR Brigitte, OUACHEE-CHARDIN Marie, YAKOUBEN Karima,
Bordeaux: ALADJIDI Nathalie, ANSOBORLO Sophie, DE BOUYN-ICHER Céline, DUCASSOU Stéphane, JUBERT Charlotte, MERCHED Maria, NOTZ-CARRERE Anne, PEREL Yves, VERITE-GOULARD Cécile,
Strasbourg: CERON-DURAN Sofia, LUTZ Patrick, PAILLARD Catherine, SPIEGEL Alexandra,
Angers: BERARDI Elsa, BRASME Jean-François, COLIN Laure, DE CARLI Emilie, DUPLAN Mylène, PELLIER Isabelle, PROUST-HOUEMONT Stéphanie.