

# Melphalan 140 mg/m<sup>2</sup> or 200 mg/m<sup>2</sup> for autologous transplantation in myeloma: results from the Collaboration to Collect Autologous Transplant Outcomes in Lymphoma and Myeloma (CALM) study. A report by the EBMT Chronic Malignancies Working Party

Holger W. Auner,<sup>1</sup> Simona Iacobelli<sup>2</sup>, Giulia Sbianchi,<sup>2</sup> Cora Knol-Bout,<sup>3</sup> Didier Blaise,<sup>4</sup> Nigel H. Russell,<sup>5</sup> Jane F. Apperley,<sup>1</sup> David Pohlreich,<sup>6</sup> Paul V. Browne,<sup>7</sup> Guido Kobbe,<sup>8</sup> Cecilia Isaksson,<sup>9</sup> Stig Lenhoff,<sup>10</sup> Christof Scheid,<sup>11</sup> Cyrille Touzeau,<sup>12</sup> Esa Jantunen,<sup>13</sup> Achilles Anagnostopoulos,<sup>14</sup> Ibrahim Yakoub-Agha,<sup>15</sup> Alina Tanase,<sup>16</sup> Nicolaas Schaap,<sup>17</sup> Wieslaw Wiktor-Jedrzejczak,<sup>18</sup> Marta Krejci,<sup>19</sup> Stefan O. Schönland,<sup>20</sup> Curly Morris,<sup>21</sup> Laurent Garderet<sup>22</sup> and Nicolaus Kröger<sup>23</sup>

<sup>1</sup>Department of Medicine, Imperial College London, UK; <sup>2</sup>Department of Biology, Tor Vergata University of Rome, Italy; <sup>3</sup>EBMT Data Office, Leiden, the Netherlands; <sup>4</sup>Institut Paoli Calmettes, Marseille, France; <sup>5</sup>Nottingham University, UK; <sup>6</sup>Charles University Hospital, Prague, Czech Republic; <sup>7</sup>St. James's Hospital, Trinity College Dublin, Ireland; <sup>8</sup>Heinrich Heine Universität, Düsseldorf, Germany; <sup>9</sup>Umeå University Hospital, Sweden; <sup>10</sup>Skåne University Hospital, Lund, Sweden; <sup>11</sup>University of Cologne, Germany; <sup>12</sup>CHU Nantes, France; <sup>13</sup>Kuopio University Hospital, Finland; <sup>14</sup>George Papanicolaou General Hospital, Thessaloniki, Greece; <sup>15</sup>CHU de Lille, LIRIC, INSERM U995, France; <sup>16</sup>Fundeni Clinical Institute, Bucharest, Romania; <sup>17</sup>Radboud University Medical Centre, Nijmegen, the Netherlands; <sup>18</sup>Medical University, Warsaw, Poland; <sup>19</sup>University Hospital Brno, Czech Republic; <sup>20</sup>University of Heidelberg, Germany; <sup>21</sup>Queens University of Belfast, Northern Ireland; <sup>22</sup>Hôpital Saint-Antoine, Paris, France and <sup>23</sup>University Hospital Hamburg-Eppendorf, Hamburg, Germany

©2018 Ferrata Storti Foundation. This is an open-access paper. doi:10.3324/haematol.2017.181339

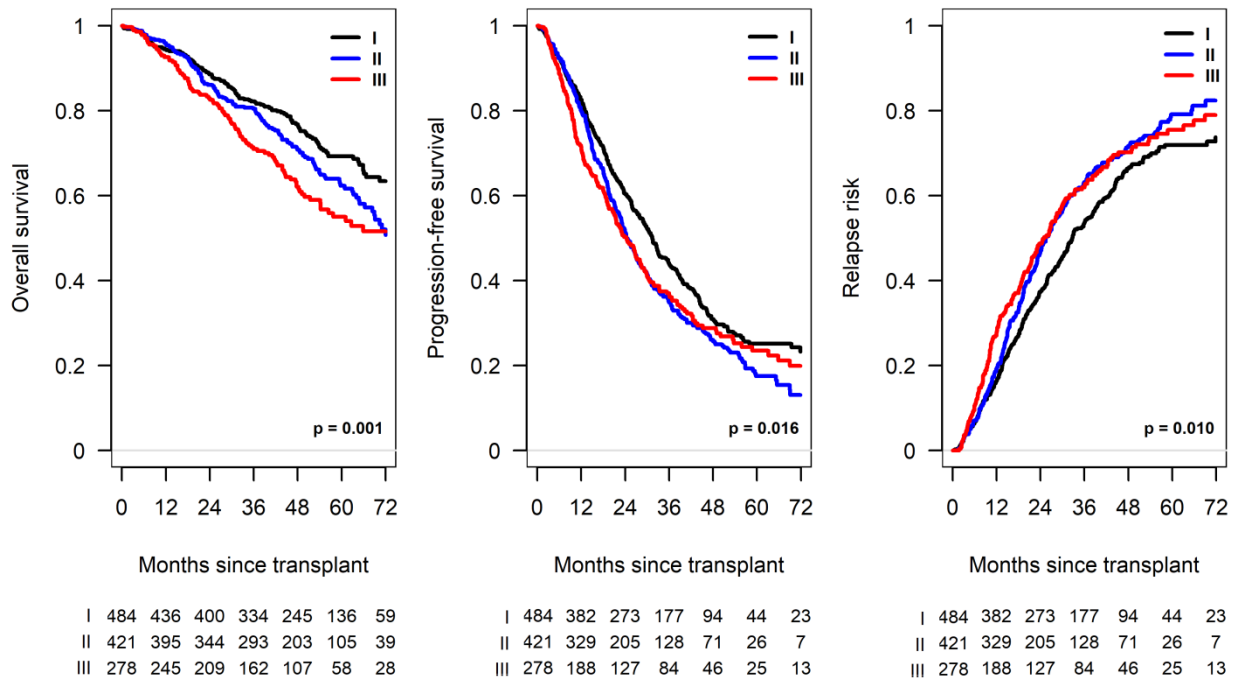
Received: September 29, 2017.

Accepted: December 1, 2017.

Pre-published: December 7, 2017.

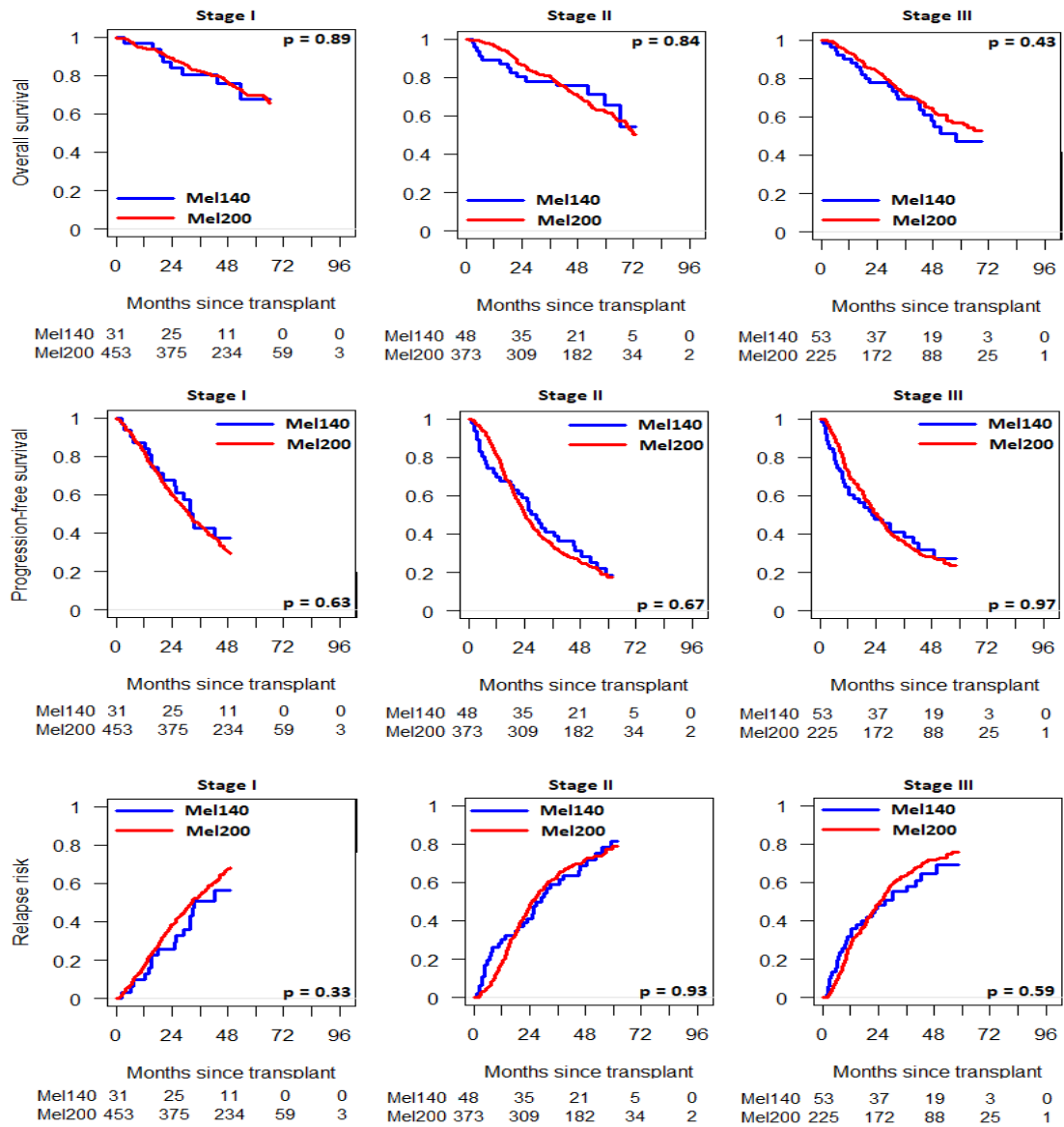
Correspondence: holger.auner04@imperial.ac.uk

## Supplementary Figure 1



Supplementary Figure 1: Overall survival, progression-free survival and relapse risk by ISS at diagnosis.

## Supplementary Figure 2



**Supplementary Figure 2: Survival and relapse by International Staging System (ISS).** Overall survival, progression-free survival and relapse risk in patients receiving a dose of melphalan equal to 140mg (Mel140) or 200mg (Mel200) in ISS stage I, II or III.