

Outcome and survival of myeloma patients diagnosed 2008-2015. Real-world data on 4904 patients from the Swedish Myeloma Registry

Cecilie Hveding Blimark,¹ Ingemar Turesson,² Anna Genell,³ Lucia Ahlberg,⁴
Bo Björkstrand,⁵ Kristina Carlson,⁶ Karin Forsberg,⁷ Gunnar Juliusson,⁸
Olle Linder,⁹ Ulf-Henrik Mellqvist,^{1,10} Hareth Nahi¹¹ and Sigurdur Y. Kristinsson^{12,13}

¹Department of Hematology, Sahlgrenska University Hospital and Institution of Internal Medicine, Sahlgrenska Academy at University of Gothenburg, Sweden; ²Department of Hematology, Oncology and Radiation Physics, Skåne University Hospital, Lund-Malmö, Sweden; ³Regional Cancer Center West, Western Sweden Health Care Region, Gothenburg, Sweden; ⁴Division of Hematology, Linköping University Hospital, Linköping, Sweden; ⁵Internal Medicine /Hematology, Karolinska Institutet, Stockholm, Sweden; ⁶Department of Hematology, Uppsala University Hospital, Sweden; ⁷Department of Hematology, Umeå University Hospital, Sweden; ⁸Hematology/Transplantation, Stem Cell Center, Lund University, Sweden; ⁹Department of Hematology, Örebro University Hospital, Sweden; ¹⁰Department of Hematology, Borås Hospital, Sweden; ¹¹Division of Hematology, Karolinska University Hospital and Karolinska Institutet, Stockholm, Sweden; ¹²Department of Medicine and Division of Hematology, University of Iceland, Reykjavik, Iceland and ¹³Karolinska University Hospital and Karolinska Institutet, Stockholm, Sweden; for the Swedish Myeloma Registry

©2018 Ferrata Storti Foundation. This is an open-access paper. doi:10.3324/haematol.2017.178103

Received: August 4, 2017.

Accepted: December 7, 2017.

Pre-published: December 7, 2017.

Correspondence: cecilie.blimark@vgregion.se

SUPPLEMENTAL TABLES

age category	Time int. (Years)	n at risk	Obs. surv. (%)	CI	Rel. surv.(%)	CI
00-49	1	208	96.8	94.5 - 99.2	96.9	94.6 - 99.3
50-59	1	505	93.7	91.7 - 95.8	94.1	92.1 - 96.2
60-69	1	1215	88.5	86.8 - 90.2	89.5	87.8 - 91.2
70-79	1	1276	82.8	81.0 - 84.7	85.3	83.4 - 87.3
80-89	1	691	64.9	62.1 - 67.8	71.0	67.9 - 74.2
90-	1	53	45.7	37.4 - 55.7	59.1	48.5 - 72.0
00-49	3	147	85.7	81.0 - 90.8	86.2	81.4 - 91.3
50-59	3	332	80.9	77.5 - 84.5	82.0	78.6 - 85.6
60-69	3	722	71.0	68.5 - 73.6	73.7	71.1 - 76.3
70-79	3	622	57.4	54.8 - 60.1	63.4	60.5 - 66.4
80-89	3	267	32.8	30.0 - 36.0	44.0	40.2 - 48.2
90-	3	9	10.3	5.7 - 18.6	23.4	13.2 - 41.6
00-49	5	86	73.1	66.5 - 80.3	73.8	67.2 - 81.1
50-59	5	195	68.2	63.8 - 72.9	70.0	65.5 - 74.8
60-69	5	357	56.1	53.1 - 59.3	60.0	56.8 - 63.4
70-79	5	268	37.3	34.4 - 40.3	45.0	41.6 - 48.7
80-89	5	64	13.4	11.0 - 16.2	23.2	19.2 - 28.1
90-	5	0	4.6	1.8 - 11.7	12.3	5.8 - 26.2

Table S1: Observed and relative 1-year, 3-year and 5-year survival (percentages) with 95 % confidence interval, by age category, in the Swedish Myeloma Registry (MM+ SMM)

Diagnosis	Time int. (Years)	n at risk	Obs. surv. (%)	CI	Rel. surv.(%)	CI
MM	1	3112	79.0	77.8 - 80.3	81.8	80.5 - 83.1
SMM	1	836	92.0	90.3 - 93.8	95.4	93.6 - 97.3
MM	3	1611	55.0	53.4 - 56.7	60.7	59.0 - 62.6
SMM	3	488	74.5	71.5 - 77.6	83.4	80.1 - 86.9
MM	5	726	38.3	36.5 - 40.1	44.9	42.9 - 47.1
SMM	5	246	57.2	53.4 - 61.1	69.4	64.9 - 74.2

Table S2: Observed and relative 1-year, 3-year and 5-year survival (percentages) with 95 % confidence interval, by diagnosis

	Observed median survival (Years)	Relative median survival (Years)
MM	3.50	4.23
SMM	5.96	8.01

Table S3: Observed and relative median survival, by diagnosis all patient reportad at diagnosis

SUPPLEMENTAL TABLES

	Observed median survival (Years)	Relative median survival (Years)
00-49		
50-59	7.78	8.11
60-69	5.37	5.92
70-79	3.34	3.90
80-89	1.53	2.01
90-	0.75	1.31

Table S4: Observed and relative median survival in MM, by 10 year cohorts

Response	Time int. (Years)	n at risk	Obs. surv. (%)	CI	Rel. surv.(%)	CI
CR	1	339	97.7	96.1 - 99.3	99.2	97.6 - 100.8
VGPR	1	1012	94.8	93.4 - 96.1	96.7	95.4 - 98.1
PR	1	973	88.9	87.1 - 90.8	91.8	89.8 - 93.8
No response	1	379	64.8	61.1 - 68.8	67.2	63.2 - 71.4
CR	3	239	81.7	77.7 - 86.0	85.3	80.9 - 89.8
VGPR	3	660	72.1	69.4 - 74.9	76.9	74.0 - 79.9
PR	3	568	58.6	55.7 - 61.7	64.9	61.6 - 68.4
No response	3	185	35.5	31.8 - 39.7	40.2	35.9 - 45.1
CR	5	112	64.1	58.6 - 70.2	69.1	63.0 - 75.8
VGPR	5	315	54.1	50.8 - 57.5	60.2	56.5 - 64.1
PR	5	264	38.9	35.9 - 42.2	45.9	42.2 - 49.9
No response	5	76	19.7	16.5 - 23.5	24.7	20.6 - 29.8

Table S5: Survival by response grade in MM patients, all ages

Diag. period	Time int. (Years)	n at risk	Obs. surv. (%)	CI	Rel. surv.(%)	CI
1	1	1468	80.4	78.6 - 82.3	83.2	81.3 - 85.1
2	1	2480	82.1	80.8 - 83.5	85.1	83.7 - 86.5
1	3	1034	56.7	54.5 - 59.1	62.6	60.1 - 65.2
2	3	1065	60.0	58.1 - 61.9	66.6	64.5 - 68.8
1	5	732	40.1	38.0 - 42.5	47.3	44.7 - 50.0
2	5	240	43.3	40.9 - 45.9	51.3	48.4 - 54.3

Table S6 Observed and relative 1-year, 3-year and 5-year survival (percentages) with 95 % confidence interval, in MM, by period of diagnosis (Period 1 2008-2010, Period 2 2011-2015)

SUPPLEMENTAL TABLES

Hospital type	Time int. (Years)	n at risk	Obs. surv. (%)	CI	Rel. surv.(%)	CI
Not university hospital	1	1622	77.7	75.9 - 79.5	80.0	78.1 - 81.9
University hospital	1	1216	82.9	81.0 - 84.8	85.0	83.0 - 87.0
Not university hospital	3	964	52.5	50.4 - 54.7	57.3	54.9 - 59.8
University hospital	3	762	60.4	58.0 - 63.0	65.6	62.9 - 68.5
Not university hospital	5	424	35.2	33.1 - 37.6	41.5	38.9 - 44.3
University hospital	5	375	44.3	41.6 - 47.2	49.9	46.7 - 53.3

Table S7: Observed and relative 1-year, 3-year and 5-year survival (percentages) with 95 % confidence interval, by hospital type (uni./not uni. hosp.)

SUPPLEMENTAL FIGURES

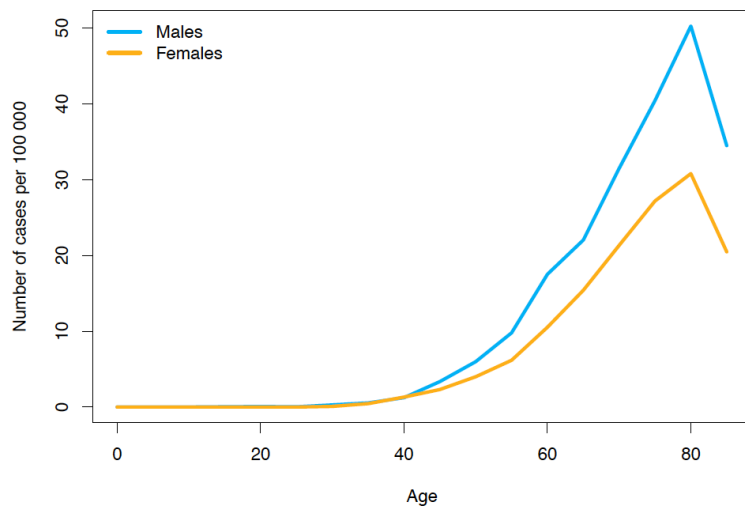


Figure S1 Age specific incidens (per 100 000 personyears) of myeloma (including plasmocytoma) in Sweden, Data from The Swedish National Health Board, mean over the years 2008–2015

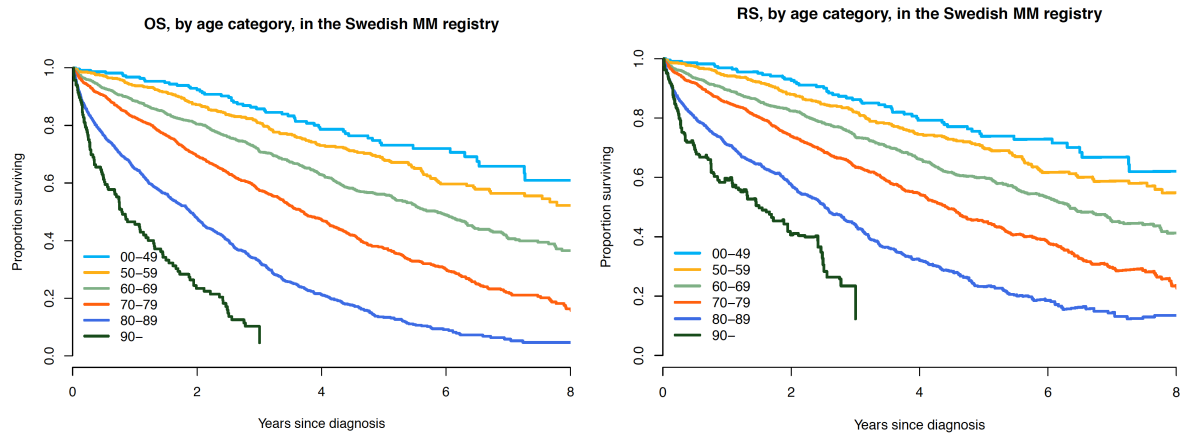


Figure S2: Observed and relative survival in myeloma (SMM+MM) patients by age cohorts In the Swedish Myeloma Registry

SUPPLEMENTAL FIGURES

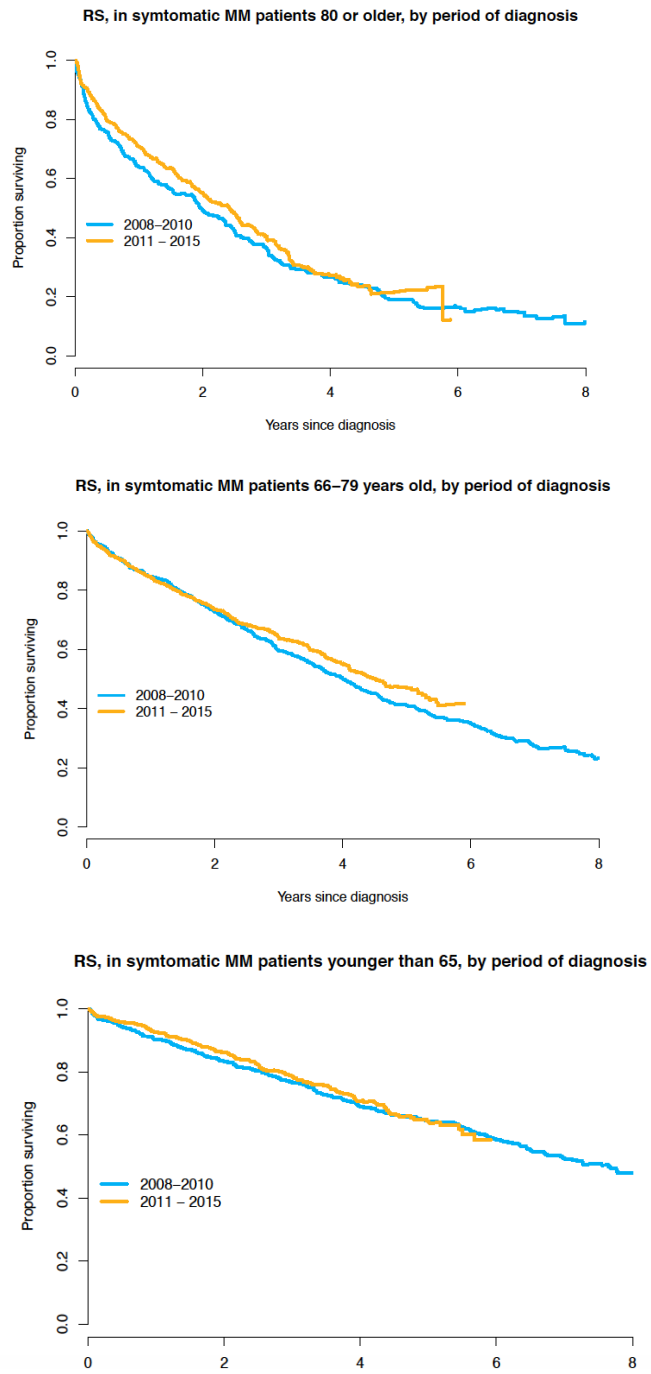


Figure S3: Relative survival by period of diagnosis, by age cohort (-65, 66–79, 80-)