
Treat or palliate: outcomes of very elderly myeloma patients

Fotios Panitsas,¹ Jaimal Kothari,¹ Grant Vallance,¹ Faouzi Djebbari,¹ Lisa Ferguson,¹ Manuela Sultanova¹ and Karthik Ramasamy^{1,2}

¹Clinical Haematology, Oxford Cancer and Haematology Centre, Oxford University Hospitals NHS Trust and ²NIHR BRC Blood Theme, Oxford, UK

Correspondence: fpanits@gmail.com

doi:10.3324/haematol.2017.173617

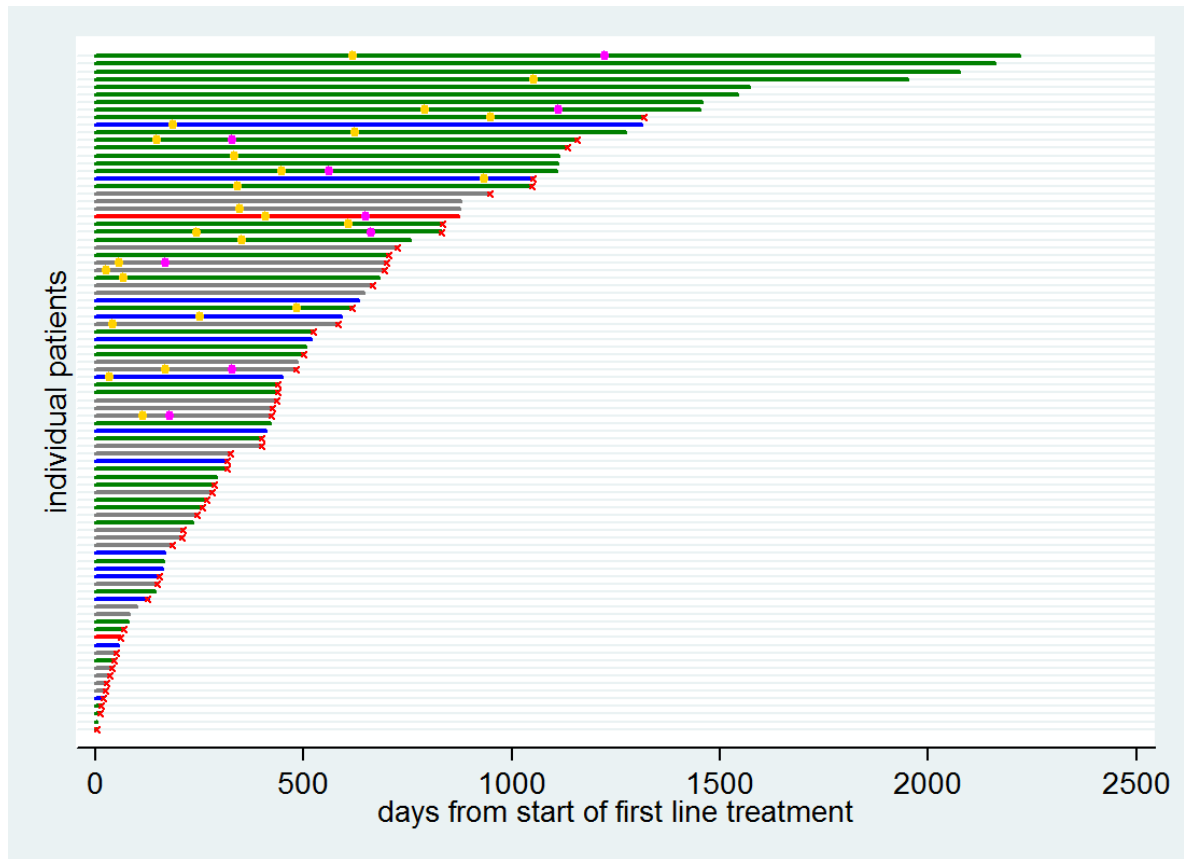


Figure S1. Swimlane plot of N=89 hyperelderly (≥ 85 years old) patients observed from start of first line treatment. Gray tracks belong to patients initially treated with alkylator-only regimens, green lines are used for patients initially treated with Thalidomide-based, red lines for Lenalidomide-treated patients, and blue lines for patients initially treated with Bortezomib-based regimens. Red x marks at the end of tracks denote patient death, open-ending tracks denote right-censored patients. Gold points mark the beginning of second line regimen and purple points mark the beginning of third line regimen.

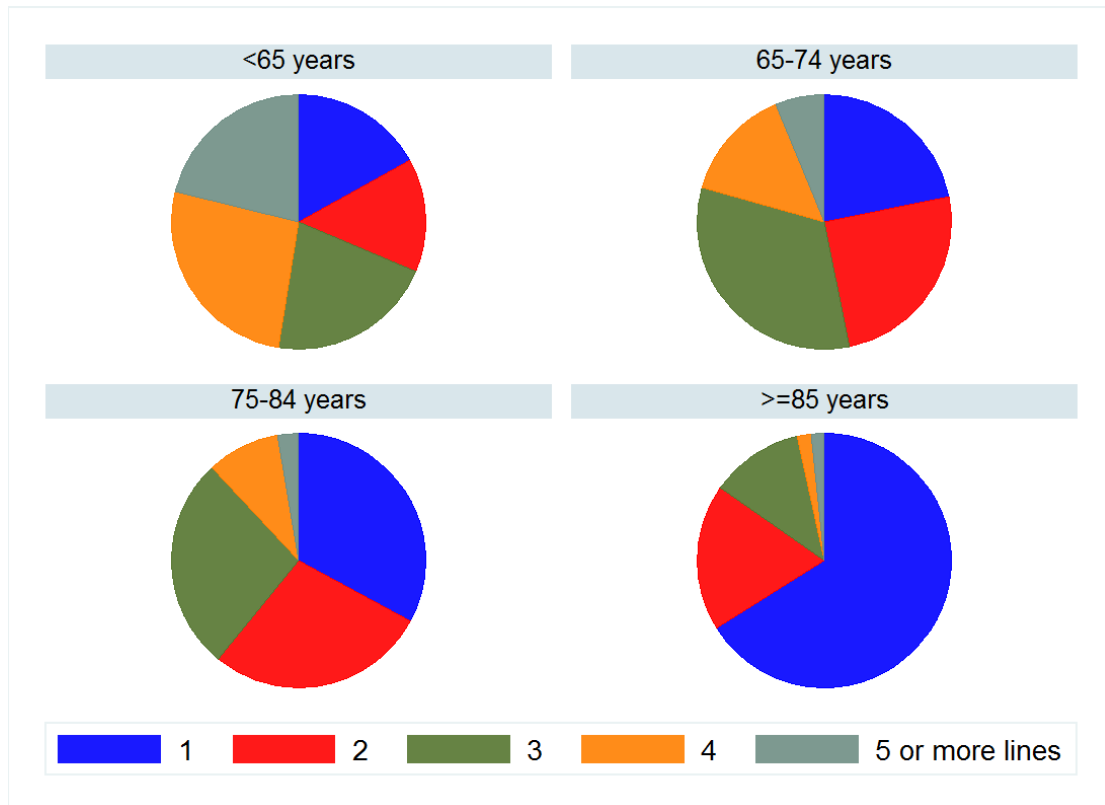


Figure S2. Pie chart of maximum number of therapy lines received by patients observed from diagnosis until death by age group. Median number of lines from diagnosis until death was 1 (range 1-5) in the highest age group (≥ 85), 2 (1-5) in the 75-84 group, 3 (1-7) in the 65-74 group and 3 (1-9) in younger patients (<65). Median survival times of deceased patients from start of first line for each of the age groups (<65, 65-75, 75-85, ≥ 85) were 19.3 months, 20.3 months, 17.2 months, and 10.8 months respectively.

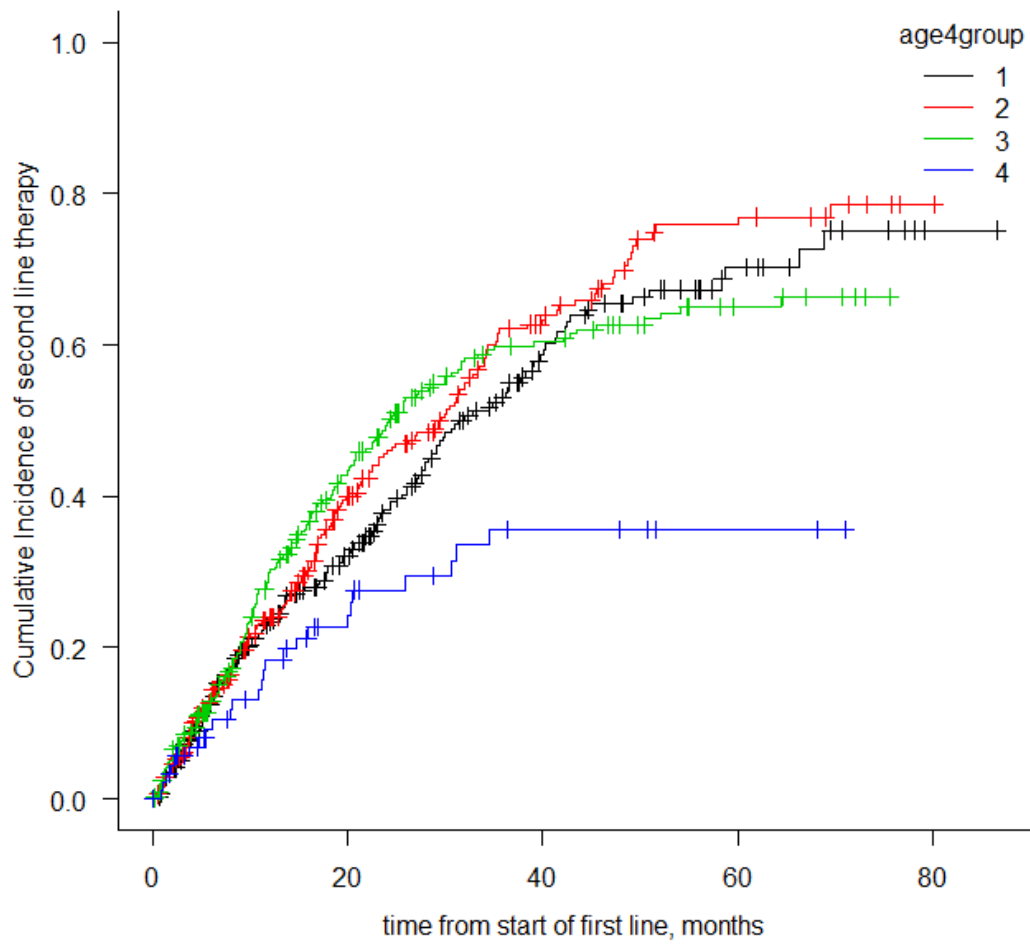


Figure S3. Cumulative incidence curves of second line treatment considering competing risk of death, by age group. Gray test $p=0.0007$. Age group 1: <65 years, group 2: 65-74 years, group 3: 75-84 years, group 4: ≥ 85 years.

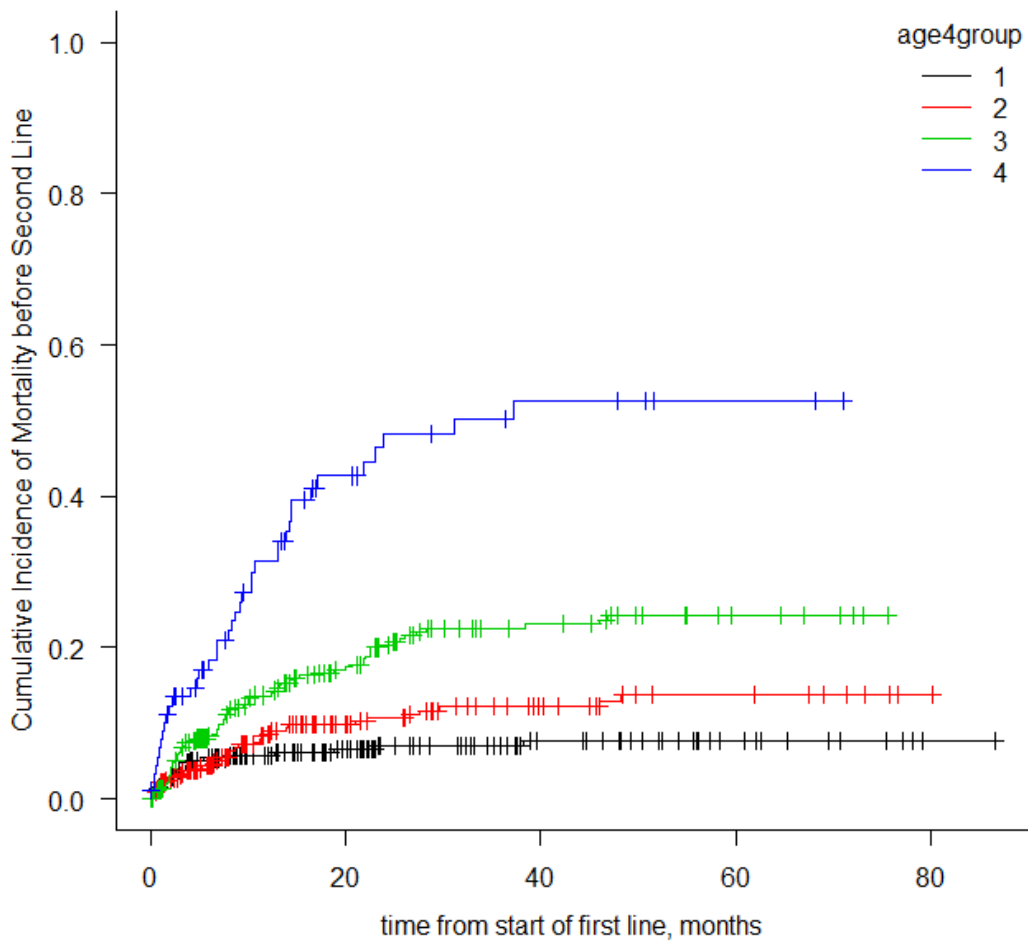


Figure S4. Cumulative incidence curves of mortality before second line treatment by age group. Gray test $p < 10^{-4}$. Age group 1: <65 years, group 2: 65-74 years, group 3: 75-84 years, group 4: ≥85 years.

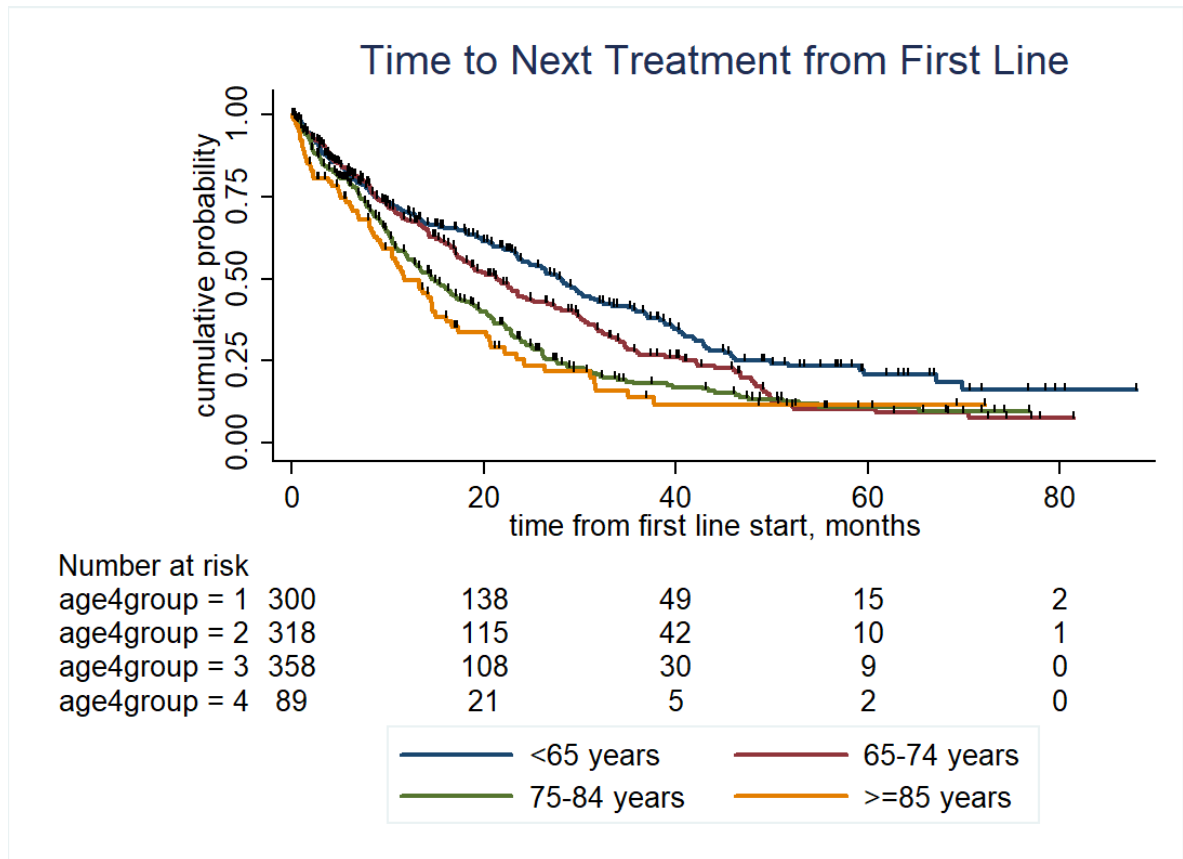


Figure S5. First TNT Kaplan-Meier curves by age group. Median first TNT was 28 months in the first age group (<65 years), 21.3 months in the 65-74 group, 14.5 months in the 75-84 group, and 11.7 months in the ≥85 years group. Log-rank test for comparison among the four groups $p < 10^{-4}$.

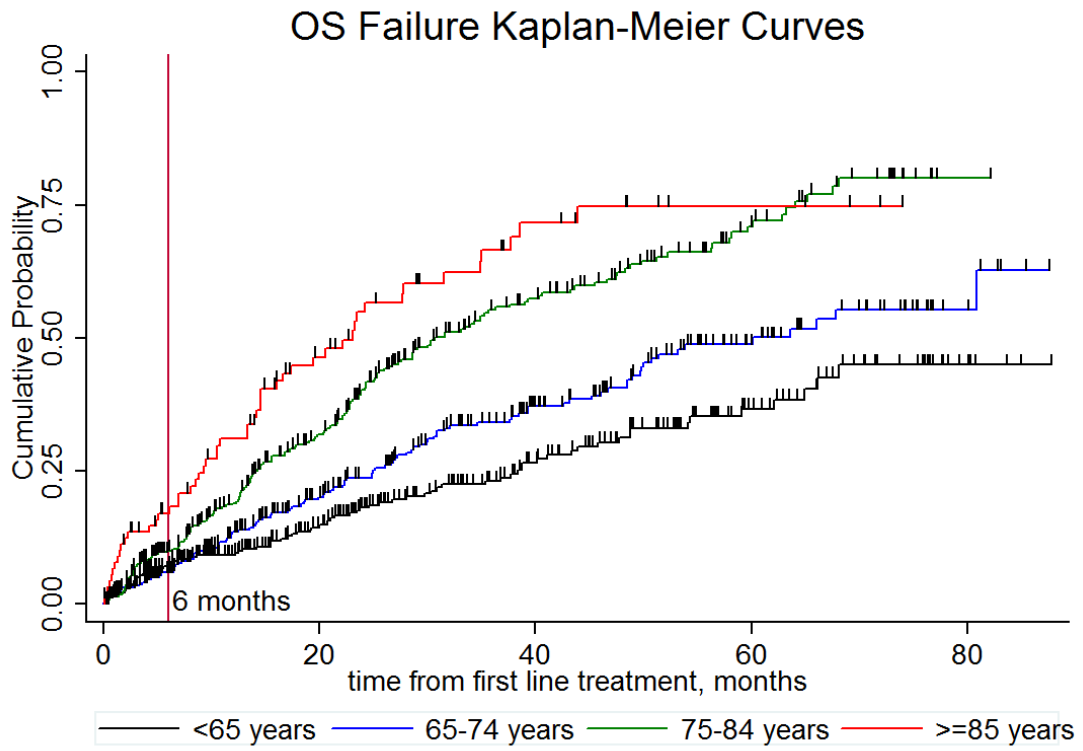


Figure S6. Overall Survival failure Kaplan-Meier curves by age group. Log-rank $p < 10^{-4}$.

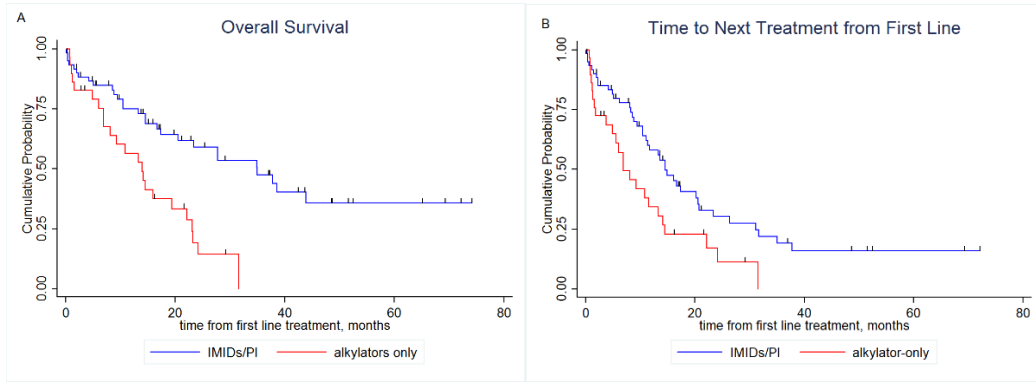


Figure S7. A. Overall survival Kaplan-Meier curves of hyperelderly patients according to first line regimen. B. First Time to Next Treatment Kaplan Meier curves of hyperelderly patients according to first line regimen.