

**Co-occurrence of CRLF2-rearranged and Ph+ acute lymphoblastic leukemia: a report of four patients**

---

Nitin Jain,<sup>1</sup> Xinyan Lu,<sup>2</sup> Naval Daver,<sup>1</sup> Beenu Thakral,<sup>2</sup> Sa A. Wang,<sup>2</sup> Sergej Konoplev,<sup>2</sup> Keyur Patel,<sup>2</sup> Rashmi Kanagal-Shamanna,<sup>2</sup> Marcus Valentine,<sup>3</sup> Guilin Tang,<sup>2</sup> Naveen Pemmaraju,<sup>1</sup> Jeffrey Jorgensen,<sup>2</sup> Partow Kebriaei,<sup>4</sup> Cesar A. Nunez,<sup>5</sup> William Wierda,<sup>1</sup> Elias Jabbour,<sup>1</sup> Kathryn G. Roberts,<sup>3</sup> Charles G. Mullighan,<sup>3</sup> Hagop Kantarjian<sup>1</sup> and Marina Konopleva<sup>1</sup>

<sup>1</sup>Department of Leukemia, The University of Texas M.D. Anderson Cancer Center, Houston, TX; <sup>2</sup>Department of Hematopathology, The University of Texas M.D. Anderson Cancer Center, Houston, TX; <sup>3</sup>Department of Pathology, St. Jude Children's Research Hospital, Memphis, TN; <sup>4</sup>Department of Stem Cell Transplantation, The University of Texas M.D. Anderson Cancer Center, Houston, TX and <sup>5</sup>Department of Pediatrics, The University of Texas M.D. Anderson Cancer Center, Houston, TX, USA

Correspondence: [mkonople@mdanderson.org](mailto:mkonople@mdanderson.org)  
doi:10.3324/haematol.2016.161000

**Supplementary Table 1. This details various disease characteristics at serial time-points during the treatment course of the patients**

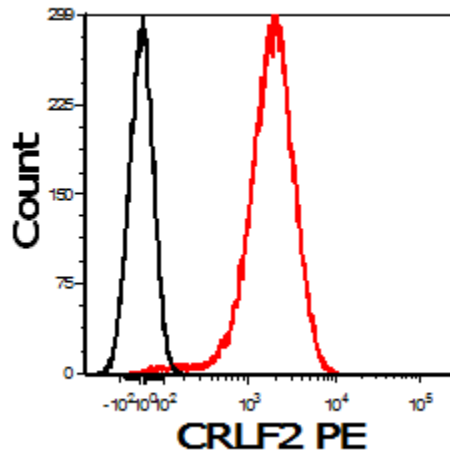
		08/28/15		10/01/15		11/03/15
<b>Patient #1</b>						
Bone marrow blast %		88		12		48
t(9;22) FISH %		56	HCVAD Part A +	0	HCVAD Part B +	0
BCR-ABL PCR %		76	Ponatinib	0	Ponatinib +	0
CRLF2 Flow %		+		+	Ruxolitinib	+
CRLF2 FISH %		90				

		01/07/15	01/30/15	03/06/15	07/31/15		09/21/15		11/06/15
<b>Patient #2</b>									
Bone marrow blast %		41	48	1	83		91		37
t(9;22) FISH %		0			4	EPOCH chemo +	0	MOAD chemo +	0
BCR-ABL PCR %		0			6.2	Ponatinib	0	Ponatinib +	0
CRLF2 Flow %		+	+	+	+		+	Ruxolitinib	+
CRLF2 FISH %					88				

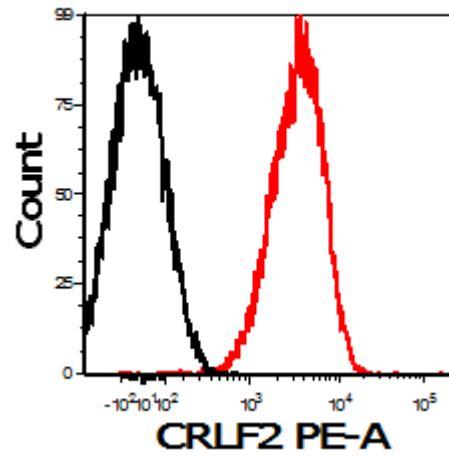
		07/15/16		08/12/16	11/08/16
<b>Patient #3</b>					
Bone marrow blast %		82		1	1
t(9;22) FISH %		21	Pediatric	0	0
BCR-ABL PCR %		48	regimen +	0.01	0
CRLF2 Flow %		+	Dasatinib	+	-
CRLF2 FISH %		56			

		02/13/17	03/10/17	04/10/17
<b>Patient #4</b>				
Bone marrow blast %	93	HCVAD + Ponatinib	2	4
t(9;22) FISH %	91		0	2
BCR-ABL PCR %	+		5.8	3.3
CRLF2 Flow %	+		+	+
CRLF2 FISH %	94			

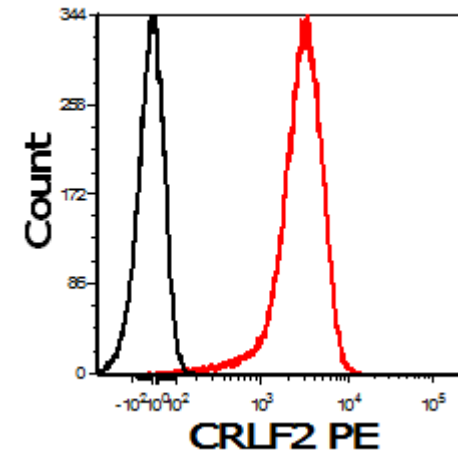
Supplementary Figure 1. CD19+CD10+CD34+ blasts, stained with CRLF2-PE (BD Biosciences, San Jose, CA) in red, vs. negative control (autofluorescence) staining in black



**Patient #1**



**Patient #2**



**Patient #3**