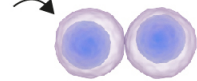


IT-901, a novel and selective NF- κ B inhibitor is a potential new drug in chronic lymphocytic leukemia and Richter syndrome

IT-901 

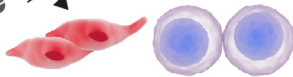


Chronic lymphocytic leukemia cells



- mitochondrial reactive oxygen species \uparrow
- mitochondria damage
- limit oxidative phosphorylation and ATP production activate intrinsic apoptosis

IT-901 



Tumor-supportive elements:
Stromal and myeloid cells



- impairs NF- κ B-driven expression of molecules involved in cell-cell contacts and immune responses
- fails to induce apoptosis



Accessory cells do not protect chronic lymphocytic leukemia cells from IT-901-induced apoptosis

IT-901 



Xenograft models
Chronic lymphocytic leukemia
Richter syndrome patients



- NF- κ B inhibition
- tumor burden reduction