

Development of a modified prognostic index for patients with aggressive adult T-cell leukemia-lymphoma aged 70 years or younger: possible risk-adapted management strategies including allogeneic transplantation

Shigeo Fuji,^{1,2} Takuhiro Yamaguchi,³ Yoshitaka Inoue,^{1,2,4} Atee Utsunomiya,⁵ Yuki Yoshi Moriuchi,⁶ Kaoru Uchamaru,⁷ Satsuki Owatari,⁸ Takashi Miyagi,⁹ Jun Taguchi,¹⁰ Ilseung Choi,¹¹ Eiichi Otsuka,¹² Sawako Nakachi,¹³ Hisashi Yamamoto,¹⁴ Saiko Kurosawa,¹ Kensei Tobinai^{2,15} and Takahiro Fukuda¹⁰

¹Department of Hematopoietic Stem Cell Transplantation, National Cancer Center Hospital, Tokyo; ²Juntendo University Graduate School of Medicine, Tokyo; ³Division of Biostatistics, Tohoku University Graduate School of Medicine, Sendai; ⁴Department of Hematology, Kumamoto University Hospital; ⁵Department of Hematology, Imamura Bun-in Hospital, Kagoshima; ⁶Department of Hematology, Sasebo City General Hospital; ⁷Department of Hematology/Oncology, Institute of Medical Science, The University of Tokyo; ⁸Department of Hematology, National Hospital Organization Kagoshima Medical Center; ⁹Department of Hematology, Heart-Life Hospital, Okinawa; ¹⁰Department of Hematology, Nagasaki University Hospital; ¹¹Department of Hematology, National Hospital Organization Kyushu Cancer Center, Fukuoka; ¹²Department of Hematology, Oita Prefectural Hospital; ¹³Second Department of Internal Medicine, University of the Ryukyus, Okinawa; ¹⁴Department of Hematology, Toranomon Hospital, Tokyo and ¹⁵Department of Hematology, National Cancer Center Hospital, Tokyo, Japan

©2017 Ferrata Storti Foundation. This is an open-access paper. doi:10.3324/haematol.2017.164996

Received: January 23, 2017.

Accepted: March 17, 2017.

Pre-published: March 24, 2017.

Correspondence: s-fuji@pj8.so-net.ne.jp

Supplemental Data

Supplemental Table

Supplemental Table 1. Best response to primary induction chemotherapy

Type of chemotherapy*	No (%)	Best response to primary induction therapy				
		CR	PR	SD	PD	Unknown
VCAP-AMP-VECP	947 (52.8)	229 (24.2)	427 (45.1)	101 (10.7)	148 (15.6)	42 (4.4)
CHOP	513 (28.6)	97 (18.9)	215 (41.9)	76 (14.8)	84 (16.4)	41 (8.0)
THP-COP	93 (5.2)	15 (16.1)	39 (41.9)	9 (9.7)	15 (16.1)	15 (16.1)
mEPOCH	57 (3.2)	13 (22.8)	22 (38.6)	4 (7.0)	14 (24.5)	4 (7.0)
CHOP-VMMV	55 (3.1)	16 (29.1)	23 (41.8)	6 (10.9)	5 (9.1)	5 (9.1)
Others	127 (7.1)	18 (14.2)	52 (40.9)	13 (10.2)	31(24.4)	13 (10.2)

* Detailed information about chemotherapy which was used in more than 3% of total patients is shown.

VCAP-AMP-VECP=vincristine (VCR), cyclophosphamide (CY), doxorubicin (DOX) and prednisone (PSL)-DXR, ranimustine (MCNU), and PSL-vindesine (VDS), etoposide (ETO), carboplatin (CBDCA), and PSL; CHOP=CY, DOX, VCR and PSL; THP-COP=pirarubicin, CY, VCR and PSL; mEPOCH=ETO, DOX, VCR, PSL and CBDCA¹; CHOP-VMMV=CHOP plus ETO, VDS, MCNU and mitoxantrone ²

Supplemental Table 2. Patient characteristics comparing the transplanted and non-transplant groups (n=1792)

Characteristic	Non-transplanted group n=1191 No (%)	Transplanted group n=601 No (%)	P value
Age, years			
Median (range)	62 (33-70)	55 (20-69)	<0.001
Sex			
Female	527 (44.3)	276 (46.0)	0.513
Male	662 (55.7)	324 (54.0)	
Subtype			
Acute type	836 (70.2)	423 (70.4)	0.956
Lymphoma type	355 (29.8)	178 (29.6)	
ECOG PS			
0-1	677 (56.8)	453 (75.4)	<0.001
2-4	514 (43.2)	148 (24.6)	
Adjusted calcium, mg/dL			
Median (range)	9.8 (7.6-24.6)	9.7 (7.8-26.0)	0.135
C-reactive protein, mg/dL			
Median (range)	1.00 (0.00-34.92)	0.48 (0.00-20.40)	<0.001
Soluble IL2R, U/mL			
Median (range)	21748 (237-3330170)	15600 (264-1130505)	<0.001
Best response to primary induction therapy			
CR	213 (17.9)	175 (29.1)	<0.001
PR	478 (40.1)	300 (49.9)	
SD	160 (13.4)	49 (8.2)	
PD	245 (20.6)	52 (8.7)	
Unknown	95 (8.0)	25 (4.2)	

Abbreviations: ECOG PS, Eastern Cooperative Oncology Group performance status; IL2R, interleukin-2 receptor; CR, complete remission; PD, progressive disease; PR, partial remission; SD, stable disease

Supplemental Figure 1. Overall survival rates by transplantation status in patients who achieved CR or PR by the primary induction therapy in the entire cohort from diagnosis (A) and a landmark analysis that included patients who survived at least 6 months after diagnosis (B). Overall survival rates by transplantation status in the (C) low-risk, (D) intermediate-risk, and (E) high-risk groups defined by the original ATL-PI in the entire cohort.

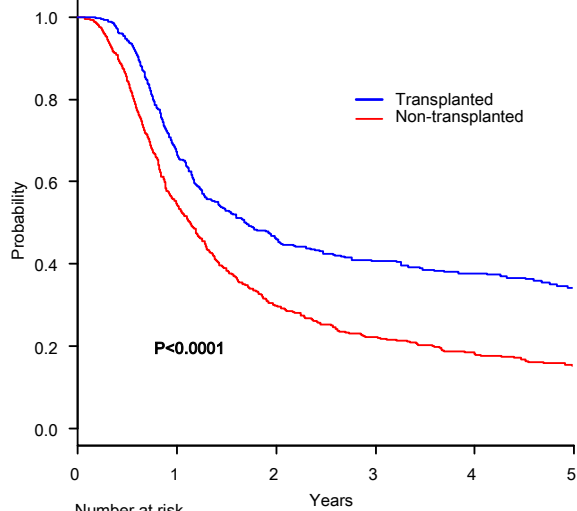
Abbreviation: CR, complete remission; PR, partial remission; ATL-PI, adult T-cell leukemia-lymphoma prognostic index

References in Supplemental data

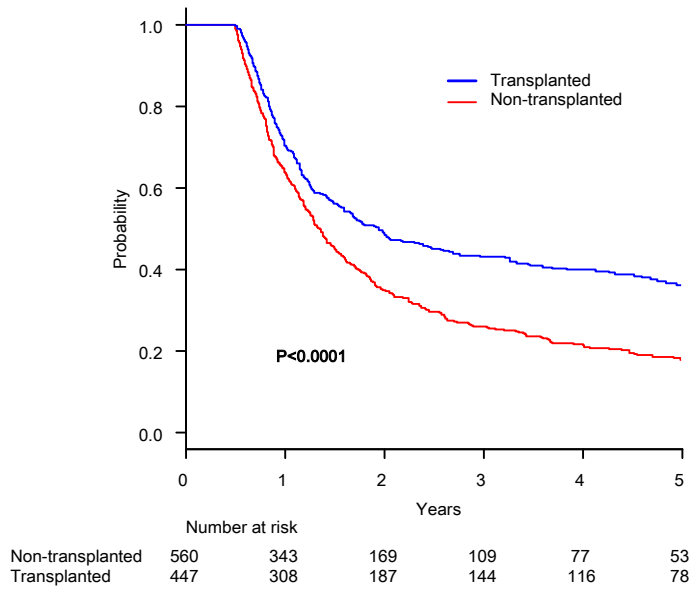
1. Haji S, Kiyasu J, Choi I, et al. Administration of an anti-CC chemokine receptor 4 monoclonal antibody, mogamulizumab, before allogeneic bone marrow transplantation for adult T-cell leukemia/lymphoma. *Bone Marrow Transplant.* 2016;51(3):432-4.
2. Kawano N, Yoshida S, Kuriyama T, et al. Clinical Features and Treatment Outcomes of 81 Patients with Aggressive Type Adult T-cell Leukemia-lymphoma at a Single Institution over a 7-year Period (2006-2012). *Intern Med.* 2015;54(12):1489-98.

Supplemental Figure 1

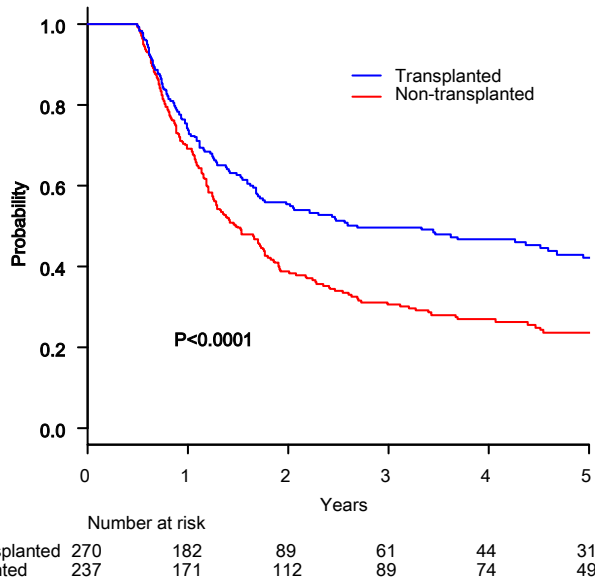
(A)



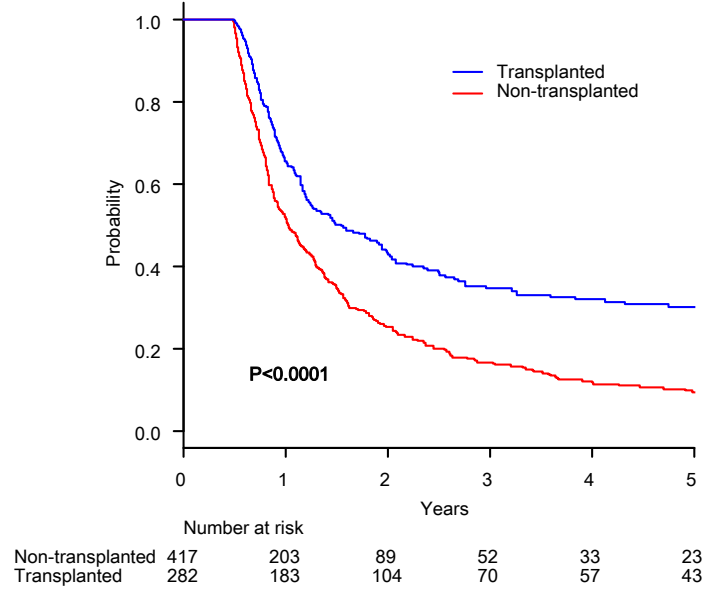
(B)



(C)



(D)



(E)

