

Precision and prognostic value of clone-specific minimal residual disease in acute myeloid leukemia

Pierre Hirsch,^{1,2,3} Ruoping Tang,^{1,2,3} Nassera Abermil,⁴ Pascale Flandrin,^{1,2,5} Hannah Moatti,^{1,2} Fabrizia Favale,^{1,2,4} Ludovic Suner,^{1,2,4} Florence Lorre,⁶ Christophe Marzac,⁴ Fanny Fava,^{1,2,3} Anne-Claire Mamez,³ Simona Lapusan,³ Françoise Isnard,³ Mohamad Mohty,^{1,3} Ollivier Legrand,^{1,2,3} Luc Douay,^{1,2,4} Chrystele Bilhou-Nabera^{1,2,4} and François Delhommeau^{1,2,4}

¹Sorbonne Universités, UPMC Univ Paris 06, INSERM, APHP Hôpital Saint-Antoine, Centre de Recherche Saint-Antoine (CRSA), Paris; ²Sorbonne Universités, UPMC Univ Paris 06, GRC n° 7, Groupe de Recherche Clinique sur les Myéloproliférations Aiguës et Chroniques MYPAC, Paris; ³AP-HP, Hôpital Saint-Antoine, Service d'Hématologie Clinique et de Thérapie Cellulaire, Paris; ⁴AP-HP, Hôpital Saint-Antoine, Service d'Hématologie Biologique, Paris; ⁵Université de Saint Etienne, Laboratoire d'Hématologie, CHU de Saint-Etienne and ⁶AP-HP, Hôpital Saint-Antoine, Laboratoire Commun de Biologie et Génétique Moléculaires, Paris, France

©2017 Ferrata Storti Foundation. This is an open-access paper. doi:10.3324/haematol.2016.159681

Received: November 9, 2016.

Accepted: March 13, 2017.

Pre-published: March 16, 2017.

Correspondence: francois.delhommeau@aphp.fr

Legends of the supplementary tables

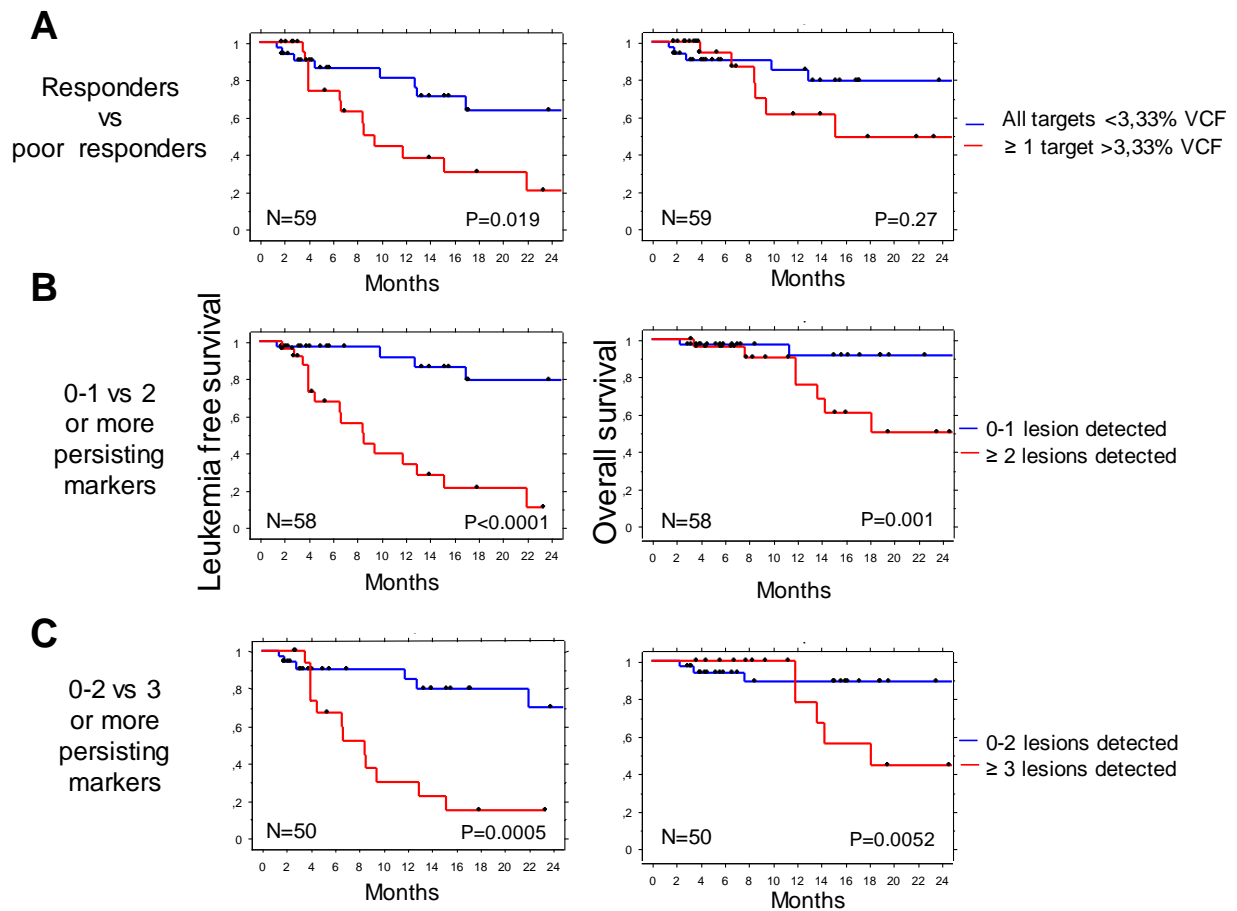
Supplementary Table 1: Patients' characteristics (genetic lesions and clinical history)

‡ these three variants were not detected in diagnosis samples in Hirsch et al (Nat Commun. 2016;7:12475) but detected in a second round of analyses using an 1% VAF detection threshold.

Supplementary Table 2: NGS results (list of variants)

Supplementary Table 3 : allele specific ddPCR assays

Supplementary Figure 1



Supplementary Figure 1 : Analyses of leukemia free survival and overall survival with data censored at time of allogeneic hematopoietic stem cell transplantation.

A) Leukemia free survival and overall survival according to the clonal response. VCF<3.33% indicates good responders (i.e. all lesions were found below the 3.33% VCF value). VCF \geq 3.33% indicates poor responders (i.e. at least one lesion was found above the threshold VCF of 3.33%). **B)** Leukemia free survival and overall survival according to the detection of 0-1 lesions or ≥ 2 lesions above the 0.4% VCF detection threshold. **C)** Leukemia free survival according to the detection of 0-2 lesions or ≥ 3 lesions above the 0.4% VCF detection threshold. All data were censored at time of allogeneic HSCT.