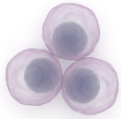


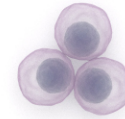
3D tri-culture model provides a specialized platform for the investigation of cell-cell interactions and new insights into acute myeloid leukemia development and therapies

Leukemia cell lines

KG1a
MOLM13
OCI-AML3
MV4-11

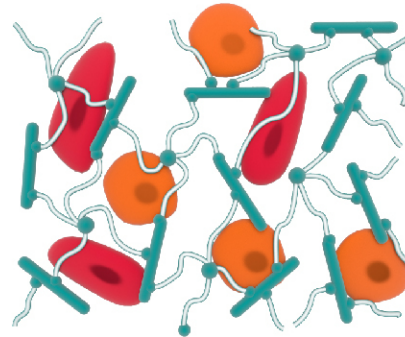


Primary cells from AML patients



3D tri-cultures

matrix metalloproteinase-sensitive hydrogels



- poly(ethylene glycol)
- heparin
- mesenchymal stromal cells
- endothelial cells



- AML 3D tri-cultures demonstrate increased resistance to Daunorubicin and Cytarabine
- CXCR4 antagonist, AMD3100, induces AML mobilization from the vascular network